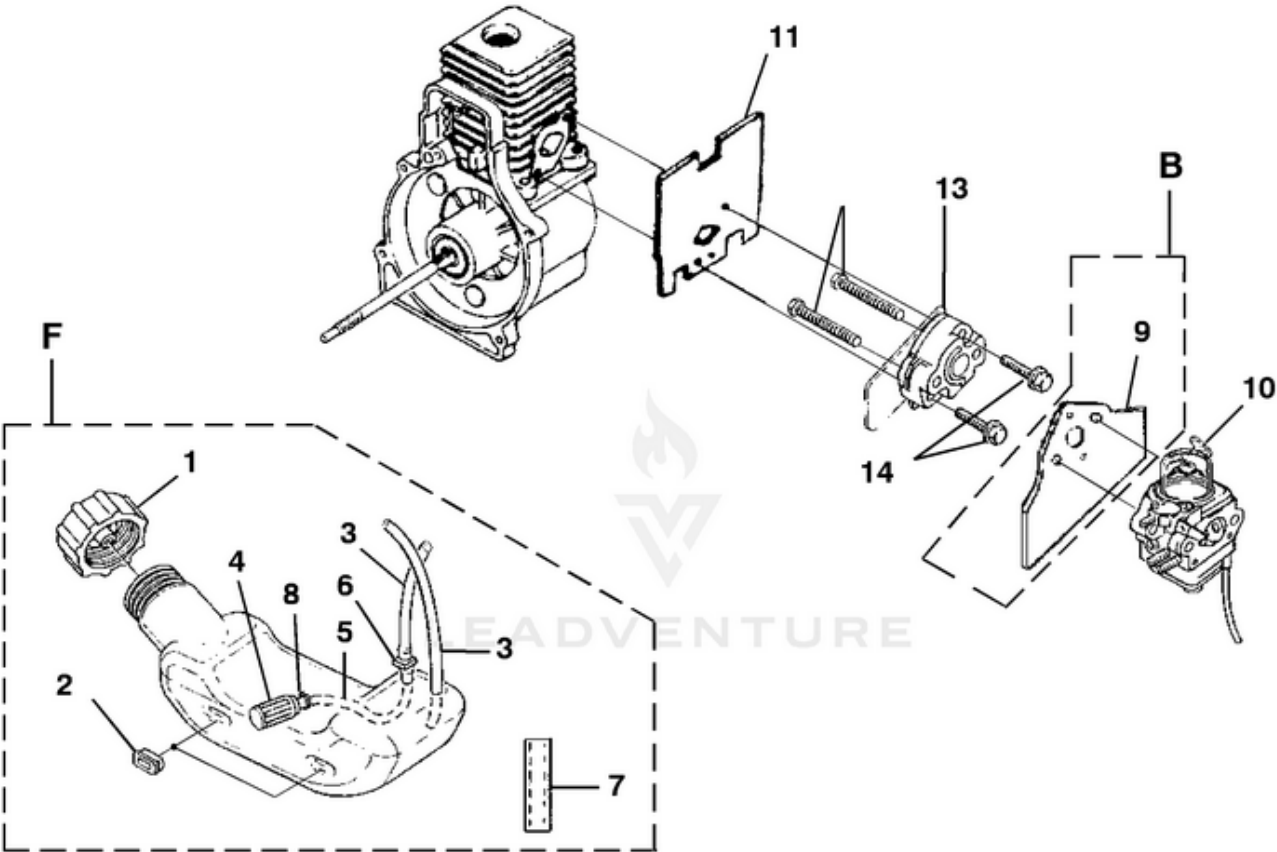


Yard Broom Blower UT-08110-A - Carburetor And Fuel Tank



TORQUE SPECIFICATIONS			
Item No.	In/Lbs	Nm	Required Loctite
12	30-40	3.4-4.5	
14	40-50	4.5-5.6	262 Red

Rendered by LeadVenture, Inc.

Ref #	Part #	Description	Qty	Context Note
F	UP00136A	FUEL TANK KIT	1	
1	A09116	FUEL CAP ( 1 5/8" Opening)	1	
2	98792	BUMPER-Rubber	3	
3	0143922	TUBING-Rubber (5.5")	2	
4	PS03380	FUEL FILTER	1	
5	9477225	TUBING-Rubber (6 1/4")	1	
6	07332	Fitting, Inlet	1	(small for 2.5mm ID fuel line)
	02067	Fitting, Inlet	1	(large for 3mm ID fuel line)
7	4283309	INSULATION-Tubing	1	
8	98268	CLAMP	1	
	06443A	GASKET-Crankcase	1	(Not shown)
	PS01565	SCREW, Sems (10-24 x .56)	4	(Not Shown)
B	UP00010A	CARBURETOR KIT	1	(UT08110 & UT08110A)
9	987661	GASKET-Carburetor	1	Also included with Short block & Cylinder Kits.
10	UP03943	LEVER-Choke (Walbro WT419,WT469)	1	
B	UP00653A	CARBURETOR KIT (Bandit 2000, Yardbroom & D25B)	1	
9	987661	GASKET-Carburetor	1	Also included with Short block & Cylinder Kits.
10	UP03941	LEVER-Choke (Walbro WT471)	1	
11	00775A	GASKET-Heat Dam	1	Also included with Short block & Cylinder Kits.
12	04474	CARB. BOLT	2	Not Shown
13	98768A	HEAT DAM	1	
14	093221	USE 660662001	2	Also included with Short block & Cylinder Kits.

This exploded view diagram illustrates the assembly of the Honda CRF150F engine. The components are numbered as follows:

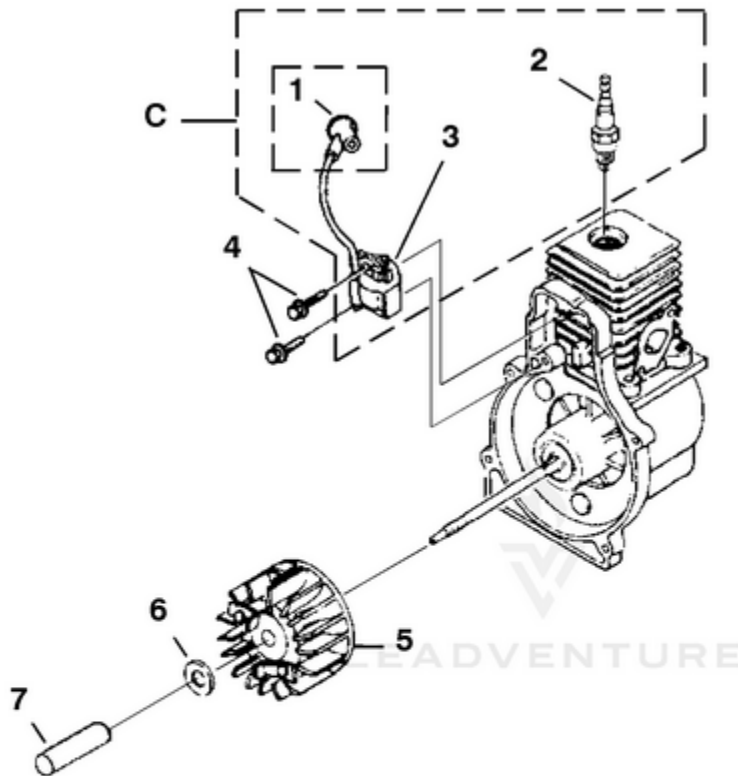
- 1**: Crankshaft assembly
- 2**: Cylinder head
- 3**: Piston pin
- 4**: Piston pin clip
- 5**: Piston
- 6**: Piston ring
- 7**: Piston ring clip
- 8**: Piston ring clip
- 9**: Piston ring clip
- 10**: Piston ring clip
- 11**: Piston ring clip
- 12**: Piston ring clip
- 13**: Piston ring clip

The diagram shows the crankshaft (1) at the bottom, with the piston (5) and piston ring (6) assembly above it. The cylinder head (2) is shown at the top. The piston pin (3) and piston pin clip (4) are shown connecting the piston to the crankshaft. The piston ring clip (7) is shown connecting the piston ring (6) to the piston pin. The piston ring clip (8) is shown connecting the piston ring (6) to the piston pin. The piston ring clip (9) is shown connecting the piston ring (6) to the piston pin. The piston ring clip (10) is shown connecting the piston ring (6) to the piston pin. The piston ring clip (11) is shown connecting the piston ring (6) to the piston pin. The piston ring clip (12) is shown connecting the piston ring (6) to the piston pin. The piston ring clip (13) is shown connecting the piston ring (6) to the piston pin.

Rendered by LeadVenture, Inc.

<b>Ref #</b>	<b>Part #</b>	<b>Description</b>	<b>Qty</b>	<b>Context Note</b>
1	UP03131	SHORT BLOCK (30cc)	1	Includes items 2-6
2	UP07146	30 CC CYLINDER KIT	1	Includes items 2-4
3	04388B	GASKET-Cylinder	1	Also included with Short block & Cylinder Kits.
4	PS02807	SCREW, SEMS (12-24 x 3/4)	3	
	00775A	GASKET-Heat Dam	1	(Not Shown)
	00394B	GASKET-Muffler	1	(Not Shown)
5	UP03366	30 CC PISTON & ROD	1	Includes item 6
6	03179	RING-Piston	2	
1	UP03133A	SHORT BLOCK (25cc)	1	Includes items 2-6
2	UP04136A	25 CC CYLINDER KIT	1	Includes items 2-4
3	04388B	GASKET-Cylinder	1	
4	PS02807	SCREW, SEMS (12-24 x 3/4)	3	
	00775A	GASKET-Heat Dam	1	(Not Shown)
	00394B	GASKET-Muffler	1	(Not Shown)
5	984544001	25 CC PISTON & ROD	1	Includes item 6
6	PS01359	RING-Piston	1	
7	PS02130	CRANKCASE COVER-Stamped Steel	1	Includes items 8-9
8	06443A	GASKET-Crankcase	1	Also included with Short block & Cylinder Kits.
9	PS01565	SCREW, SEMS (10-24 x .56)	4	Also included with Short block & Cylinder Kits.
10	02851	TAB-Male	1	(Not for UT08110 & UT08110A)
11	82376	SCREW-Thread Form. (#8 X 1/2")	3	
12	82563	SCREW-Thread Form. (#10 X 3/4")	6	
13	UP06522A	SHROUD	1	

## Yard Broom Blower UT-08110-A - Ignition With Rotor

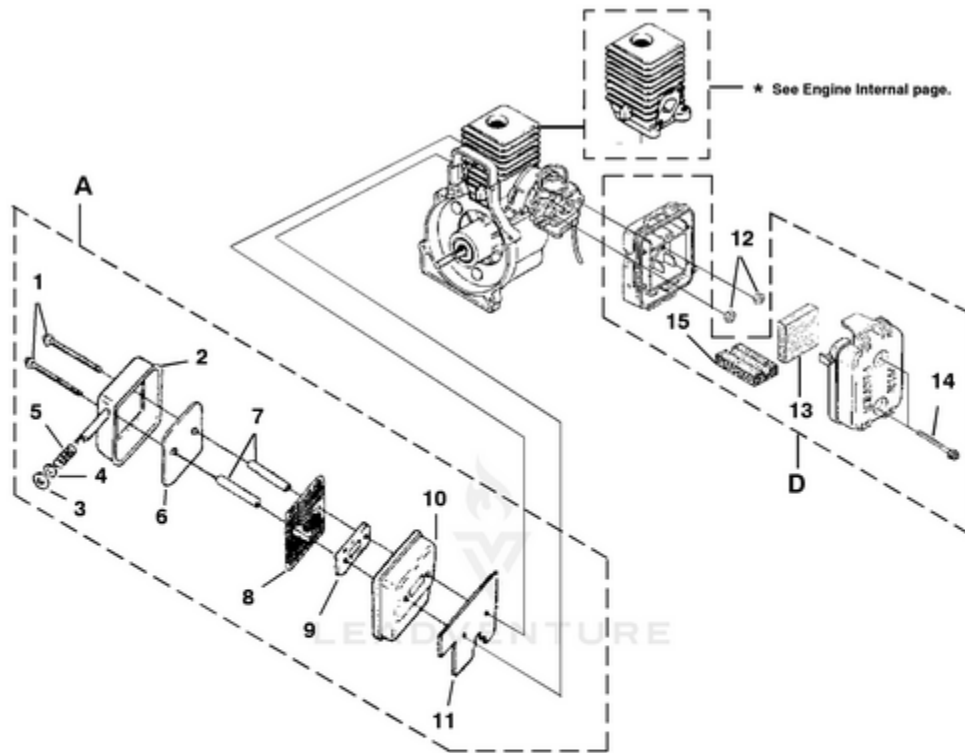


TORQUE SPECIFICATIONS			
Item No.	In/Lbs	Nm	Required Loctite
2 .....	120-180	13.6-20.3	
4 .....	30-40	3.4-4.5	242 Blue

Rendered by LeadVenture, Inc.

<b>Ref #</b>	<b>Part #</b>	<b>Description</b>	<b>Qty</b>	<b>Context Note</b>
C	UP03858	IGNITION KIT w/Module	1	Includes items 1-3
1	UP03868	TERMINAL and COVER	1	
2	PS02227	SPARK PLUG	1	
3	01341B	IGNITION Module	1	
4	82540	SCREW-Thread Form. (8-32 x 1")	2	
5	984521001	USE 986153001	1	
6	95479A	WASHER-Flat	1	
7	PS03566	SPACER-Fan	1	

## Yard Broom Blower UT-08110-A - Muffler And Air Cleaner



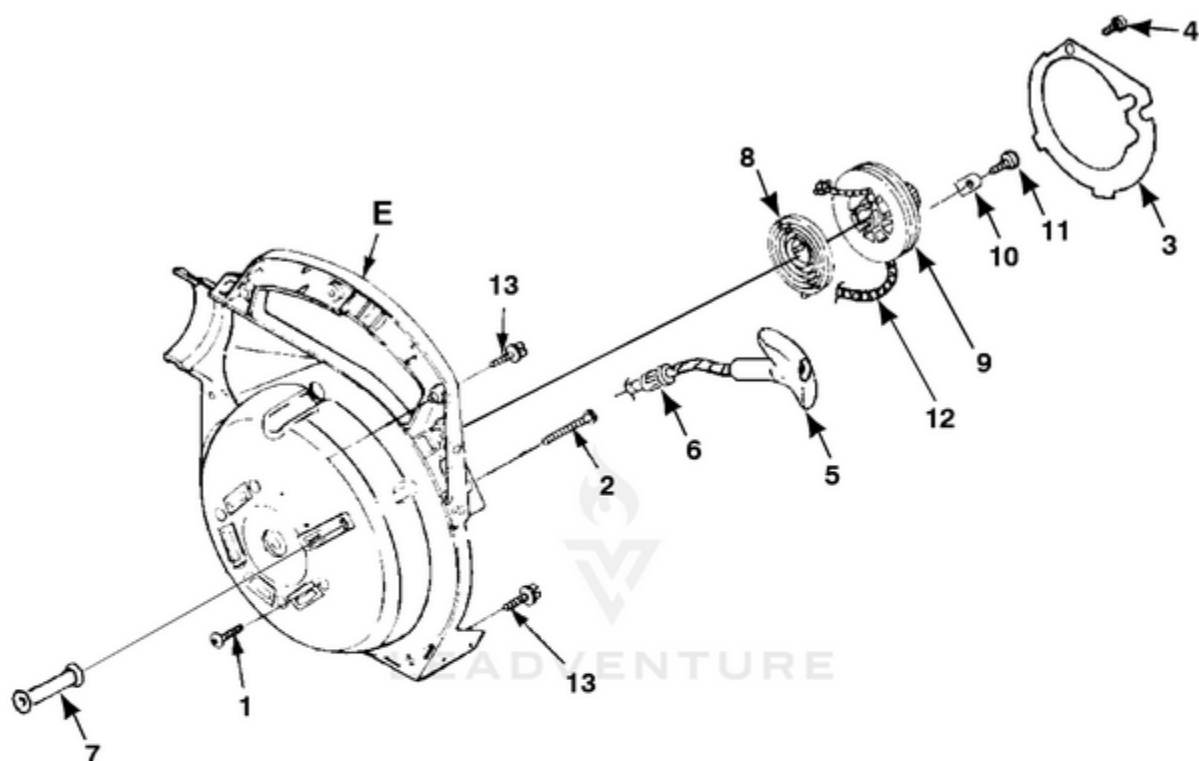
TORQUE SPECIFICATIONS			
Item No.	In/Lbs	Nm	Required Loctite
1	40-50	4.5-5.6	
12	30-40	3.4-4.5	
14	30-40	3.4-4.5	

Rendered by LeadVenture, Inc.

Ref #	Part #	Description	Qty	Context Note
A	PA01181	MUFFLER-Complete	1	Includes items 1-11
1	88060	SCREW-Sems Hex Hd. (10-24 x 2 1/2")	2	
2	A00366	MUFFLER COVER	1	
3	00381	WASHER-Insulating	1	
4	84117	WASHER-Flat	1	
5	00387	SPRING-Compression	1	
6	00777	DEFLECTOR-Muffler	1	
7	04785	SPACER-Muffler	1	
8	00388B	SCREEN-Spark Arrestor	1	
9	98783	PLATE-Reinforcing	1	
10	98781	BODY-Muffler	1	Also included with Short block & Cylinder Kits.
11	00394B	GASKET-Muffler	1	
12	81208	NUT-Hex (10-24)	2	
D	UP00011	AIR FILTER KIT	1	Includes items 13-15
13	98760	AIR FILTER	1	
14	093221	USE 660662001	2	
15	04857	FILTER, Foam Air	1	For UT08110 And UT08110A
D	985059001	AIR FILTER KIT	1	
13	98760	AIR FILTER	1	
14	093221	USE 660662001	2	For UT08110 And UT08110A



Yard Broom Blower UT-08110-A - Starter

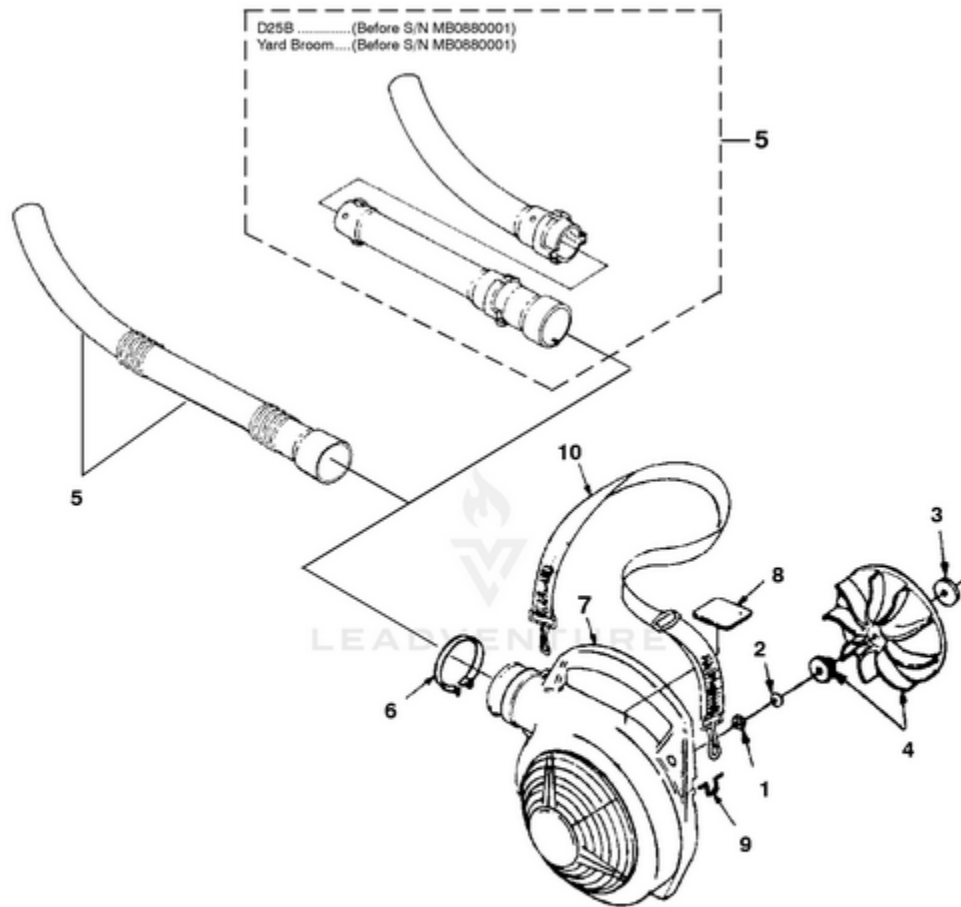


TORQUE SPECIFICATIONS			
Item No.	In/Lbs	Nm	Required Loctite
1	55-60	6.2-6.8	
2	20-30	2.3-3.4	
4	8-12	9-1.4	
11	30-40	3.4-4.5	
13	20-30	2.3-3.4	

Rendered by LeadVenture, Inc.

Ref #	Part #	Description	Qty	Context Note
1	82538	SCREW-Thread Form. (10-24 X 3/4")	4	
2	JA416903	SCREW-Thread Form. (#10 X 1 5/8")	1	
E	UP04551A	VOLUTE HOUSING & STARTER	1	Includes items 3-12
3	00374	PLATE-Rotor	1	
4	82528	SCREW-Thread Form. (#6 X 1 3/8")	1	
5	PS00179	GRIP-Starter (Black)	1	
6	969811A	BUSHING-Starter	1	
7	00364B	GUIDE-Starter Rope	1	
8	A98773A	SPRING & CONTAINER	1	
9	98770A	PULLEY-Starter	1	
10	98791	BRACKET-Retaining	2	
11	82541	SCREW-Thread Form. (#10 X 1/2")	2	
12	9789901	ROPE-Starter	1	
13	82563	SCREW-Thread Form. (10-24 X 3/4")	6	

# Yard Broom Blower UT-08110-A - Volute, Fan & Tubes



TORQUE SPECIFICATIONS			
Item No.	In/Lbs	Nm	Required Loctite
1	130-150	14.7-16.9	

Rendered by LeadVenture, Inc.

<b>Ref #</b>	<b>Part #</b>	<b>Description</b>	<b>Qty</b>	<b>Context Note</b>
1	81124A	NUT-Hex (3/8-24)	1	
2	03163	WASHER-Bellville (3/8")	1	
3	03165	WASHER-Flat	2	
4	UP06826A	BLOWER FAN KIT	1	
5	984917001	TUBE KIT	1	
6	00433B	CLAMP w/Fasteners	1	
7	UP00757A	VOLUTE HOUSING (Outer)	1	Includes item 8
8	08483	DECAL-Warning	1	
9	00398	LOOP-Wire	1	
10	96337C	SHOULDER STRAP	1	(NOT FOR UT8110 & UT8110A)