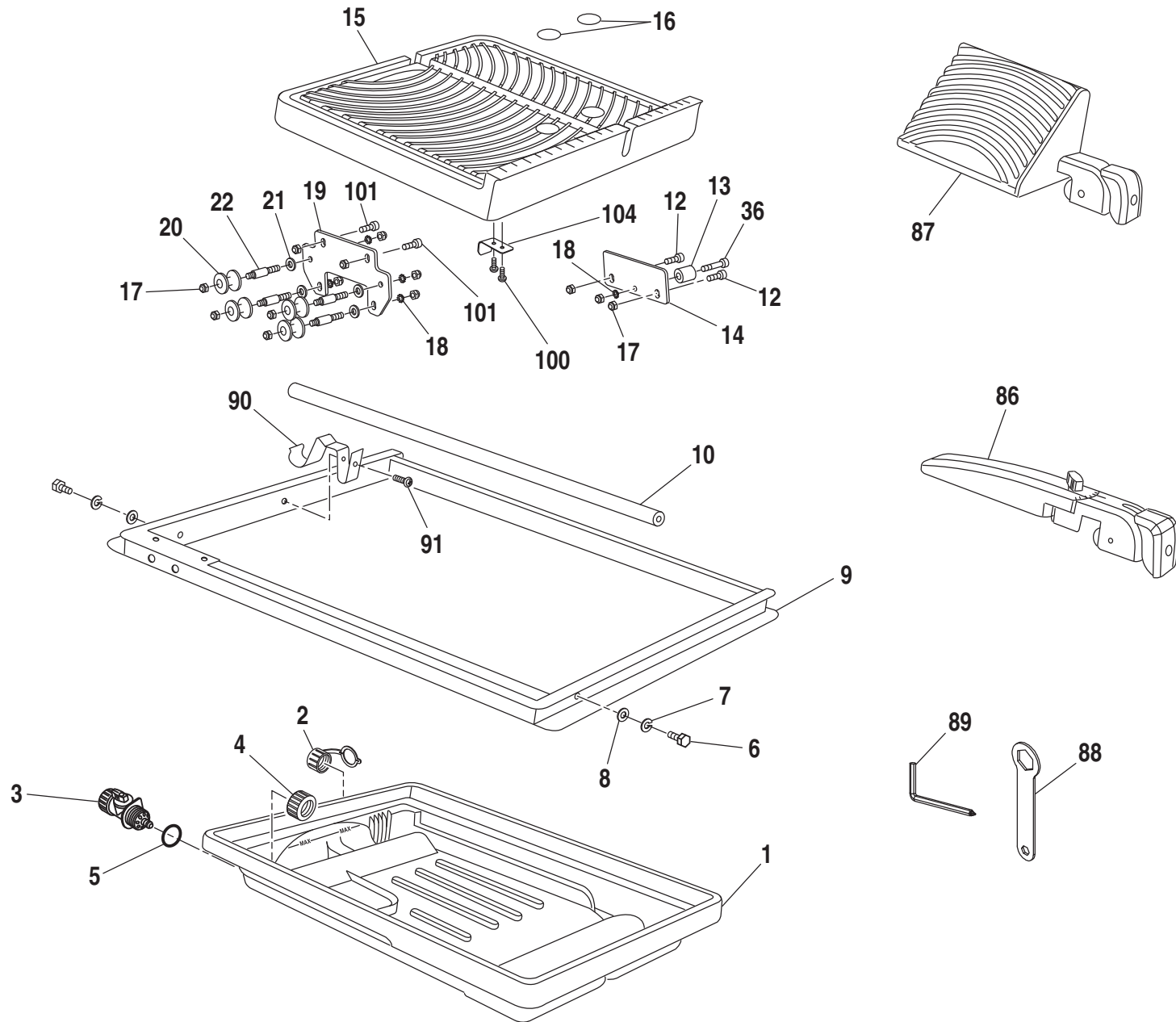


RYOBI TILE SAW – MODEL NUMBER WS730

FIGURE A



RYOBI TILE SAW – MODEL NUMBER WS730

FIGURE B

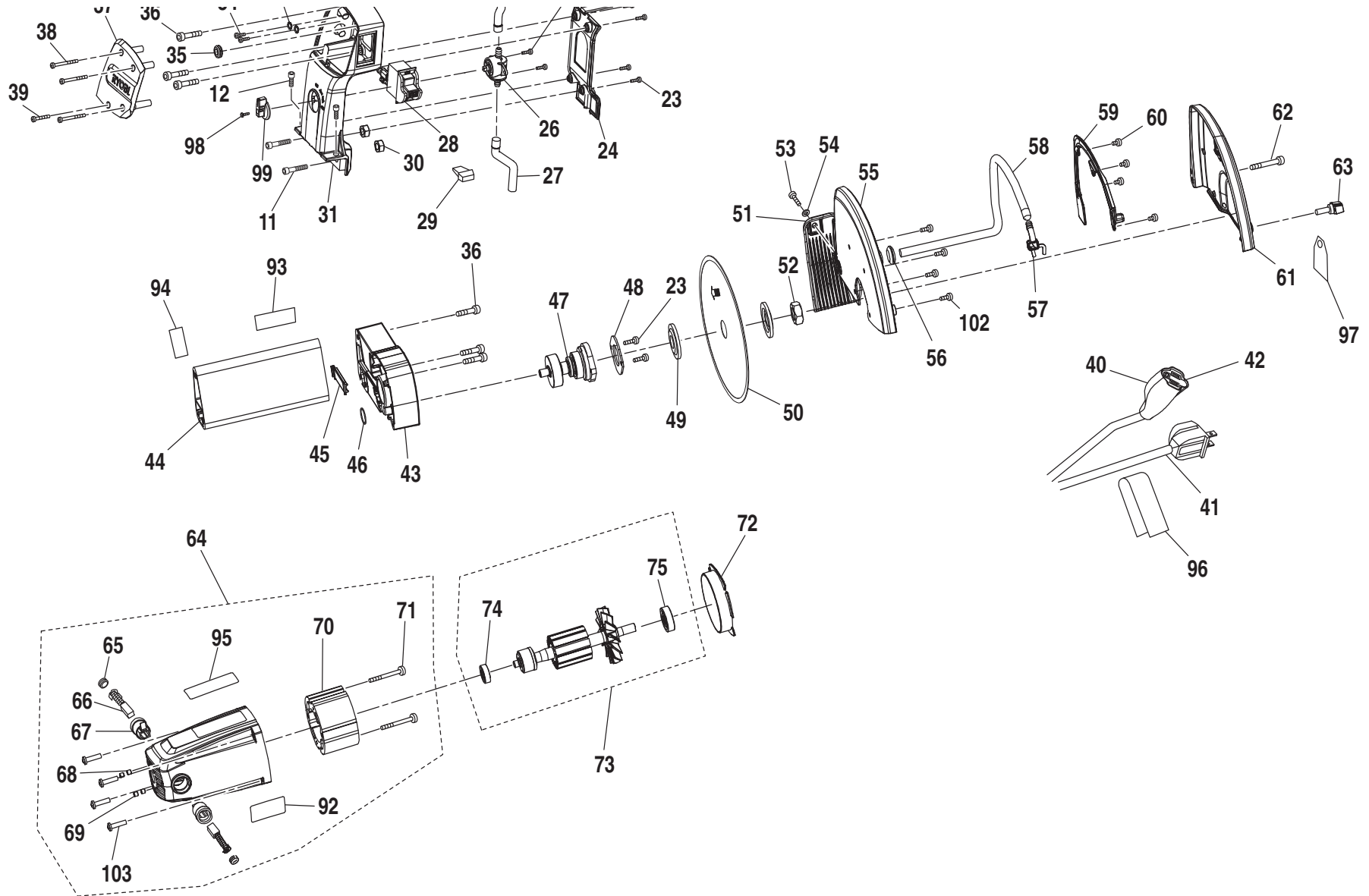
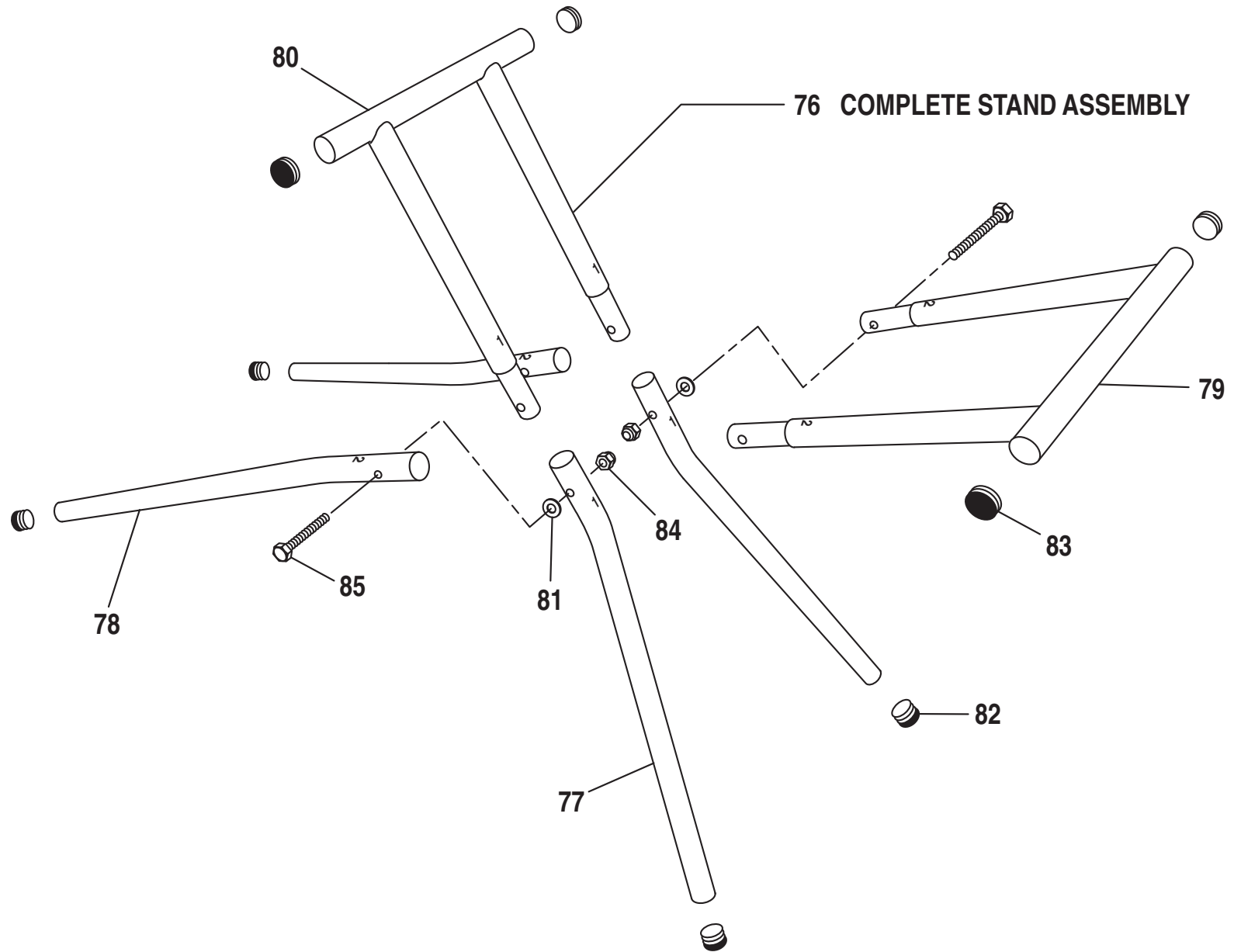


FIGURE C



RYOBI TILE SAW – MODEL NUMBER WS730

The model number will be found on a plate attached to the back support arm. Always mention the model number in all correspondence regarding your **TILE SAW** or when ordering repair parts.

PARTS LIST FOR FIGURES A, B and C

KEY NO.	PART NUMBER	DESCRIPTION	QTY.	KEY NO.	PART NUMBER	DESCRIPTION	QTY.
1	080009002001	Water Tray	1	29	080009002118	Switch Key	1
2	080009002700	Drainage Output	1	30	080009002036	Hex Nut (M8)	2
3	080009002701	Water Supply Valve	1	31	080009002037	Support Arm	1
4	080009002005	Water Inlet Knob	1	32	080009002038	Washer (M3)	2
5	080009002006	O-Ring	1	33	080009002039	Strain Relief Bushing	2
6	080009002013	Hex Bolts (M8 x 20 mm, Hex Hd.)	2	34	080009002040	Screw (M3 x 8 mm, Pan Hd.)	2
7	080009002014	Lock Washer (M8)	2	35	080009002041	Grommet (3/8 in.)	1
8	080009002015	Washer (M8)	2	36	080009002042	Screw (M6 x 25 mm, Special)	7
9	080009002016	Water Tray Frame	1	37	080009002043	Outer Support Arm Cover	1
10	080009002017	Slide Rod	1	38	080009002044	Screw (M3 x 32 mm, Pan Hd.)	3
11	080009002018	Socket Head Screw, Large (M8 x 38 mm, Hex Soc. Hd.)	2	39	080009002045	Screw (M3 x 12 mm, Pan Hd.)	1
12	080009002019	Screw (M6 x 16 mm, Hex Soc. Hd.)	4	40	080009002046	Pump Receptacle Cover	1
13	080009002020	Roller Wheel	1	41	080009002047	Power Cord	1
14	080009002021	Right Roller Bracket	1	42	080009002048	Pump Receptacle	1
15	080009002022	Easy Glide Table™	1	43	080009002708	Gear Box w/Needle Bearing	1
16	080009002900	"No Hands" Warning Label	2	44	080009002051	Extrusion	1
17	080009002023	Nylock Nut (M6)	13	45	080009002052	Motor Outlet Cover	1
18	080009002024	Washer (M6)	5	46	080009002053	O-Ring	1
19	080009002025	Left Roller Bracket	1	47	080009002706	Gear Shaft Assembly	1
20	080009002026	Adjustable Roller	4	48	080009002058	Bearing Cover	1
21	080009002027	Washer (D6 x D16 x 1t)	4	49	080009002060	Outer Washer	2
22	080009002028	Roller Shaft	4	50	080009002061	Tile Cutting Wheel	1
23	080009002029	Screw (M4 x 12 mm, Pan Hd.)	6	51	080009002062	Splash Guard	1
24	080009002030	Inner Support Arm Cover	1	52	080009002063	Arbor Nut	1
25	080009002031	Screw (M4 x 8 mm, Pan Hd.)	2	53	080009002064	Screw (M5 x 12 mm, Pan Hd.)	9
26	080009002702	Valve Assembly (Inc. Key Nos. 98 and 99)	1	54	080009002065	Flat Washer (M5)	1
27	080009002034	Hose	1	55	080009002066	Inner Guard	1
28	080009002035	Switch (Inc. Key No. 29)	1	56	080009002067	Grommet (5/8 in.)	1
				57	080009002069	Spray Nozzle	1

RYOBI TILE SAW – MODEL NUMBER WS730

The model number will be found on a plate attached to the back support arm. Always mention the model number in all correspondence regarding your **TILE SAW** or when ordering repair parts.

PARTS LIST FOR FIGURES A, B and C

KEY NO.	PART NUMBER	DESCRIPTION	QTY.	KEY NO.	PART NUMBER	DESCRIPTION	QTY.
58	080009002070	Water Tube	1	85	080009002117	Screw (M8 x 65 mm, Hex Hd.)	2
59	080009002071	Tube Cover	1	86	080009002709	Rip Guide.....	1
60	080009002072	Screw (M4 x 6 mm, Pan Hd.)	4	87	080009002711	Bevel Block Assembly.....	1
61	080009002073	Outer Wheel Guard.....	1	88	080009002106	Wheel Wrench	1
62	080009002074	Guard Pivot Shaft.....	1	89	080009002107	Hex Key	1
63	080009002075	Wheel Guard Lock 20 mm.....	1	90	080009002120	End-of-Cut Reminder	1
64	080009002707	Motor Housing Assembly	1	91	080009002068	Screw (M5 x 12 mm, Pan Hd.)	1
65	080009002076	Brush Holder Cap.....	2	92	080009002906	Logo Label.....	1
66	080009002077	Brush Assembly	2	93	080009002907	Data Label	1
67	080009002078	Brush Holder	2	94	080009002908	Caution Label (Receptacle)	1
68	080009002079	Set Screw (M5 x 5 mm)	2	95	080009002909	Warning Label (English)	1
69	080009002080	Set Screw (M5 x 6 mm)	2	96	080009002910	Danger Label (GFCI).....	1
70	080009002704	Field Assembly	1	97	080009002911	Warning Label (Spanish/French)	1
71	080009002083	Screw (M6 x 60 mm) Triangular w/Lock Washer.....	2	98	080009002012	Screw (M3 x 10 mm, Pan Hd.)	1
72	080009002084	Fan Baffle	1	99	080009002011	Knob.....	1
73	080009002705	Armature Assembly (Inc. Key Nos. 74 & 75).....	1	100	080009002122	Screw (M5 x 12 mm)	2
74	080009002085	Ball Bearing (608 2RS C3).....	1	101	080009002123	Bolt (M6 x 16 mm, Hex Hd.).....	2
75	080009002086	Ball Bearing (6200 TU/TZ/CM/5C)	1	102	080009002068	Screw (M5 x 12 mm, Pan Hd.)	4
76	080009002712	Complete Stand Assembly (Promotional)	1	103	080009002081	Screw (M5 x 20 mm, Pan Hd.)	4
77	080009002111	Rear Stand Tubing.....	2	104	080009002059	Stopper Plate	1
78	080009002112	Front Stand Tubing.....	2				
79	080009002113	Rear Linkage Tubing.....	1				
80	080009002114	Front Linkage Tubing.....	1				
81	080009002115	Washer (M8)	2				
82	080009002116	Leg Plug	4				
83	080009002094	Tube Plug.....	4				
84	080009002095	Nylock Nut (M8).....	2				

NOT SHOWN ITEMS:

080009002119	Optional Pump	1
987000414	Operator's Manual.....	1
987000467	Promo Stand Operator's Manual	1

12-03-09
(REV:02)