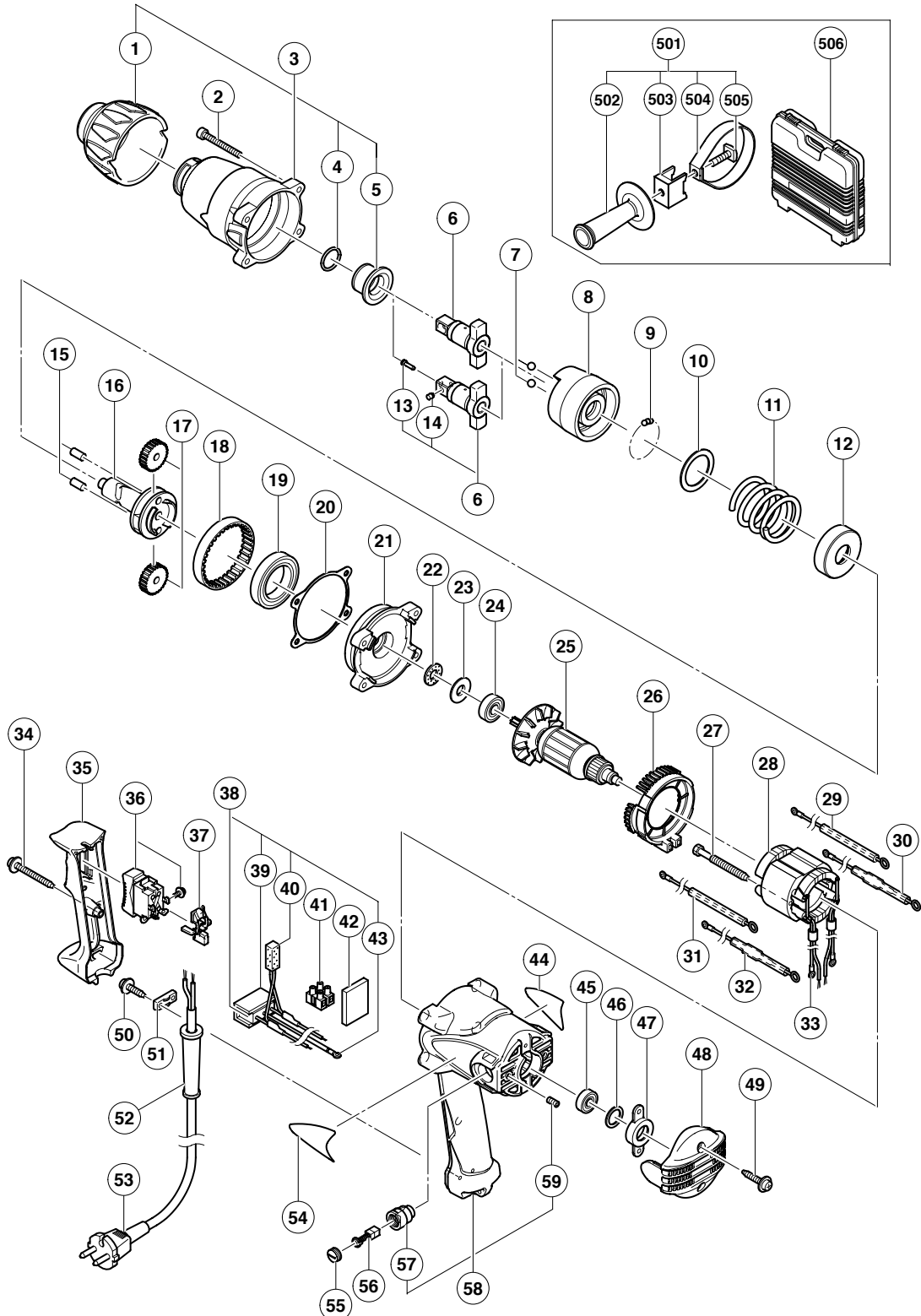


ELECTRIC TOOL PARTS LIST

■ IMPACT WRENCH Model WR 16SA

2004 · 12 · 30

(E1)



PARTS

WR 16SA

ITEM NO.	CODE NO.	DESCRIPTION	NO. USED	REMARKS
1	323-767	BUMPER	1	
2	323-753	SEAL LOCK HEX. SOCKET HD. BOLT M5X35	4	
3	323-765	HAMMER CASE ASS'Y	1	INCLUD. 1, 4, 5
4	318-704	O-RING (M)	1	
5	323-766	METAL	1	
* 6	323-773	ANVIL (G)	1	TYPE FOR W/O PLUNGER (A), PIN RETAINER (A)
* 6	985-207	ANVIL (B) ASS'Y	1	INCLUD. 13, 14 TYPE FOR W/PLUNGER (A), PIN RETAINER (A)
7	959-150	STEEL BALL D6.35 (10 PCS.)	2	
8	323-764	HAMMER	1	
9	959-155	STEEL BALL D3.97 (10 PCS.)	30	
10	323-763	HAMMER WASHER	1	
11	323-761	SPRING	1	
12	323-760	SPRING SEAT	1	
* 13	323-542	PIN RETAINER (A)	1	FOR FRA, FRG, ITA, ESP, FIN, SUI, USA, CAN
* 14	323-541	PLUNGER (A)	1	FOR FRA, FRG, ITA, ESP, FIN, SUI, USA, CAN
15	985-169	NEEDLE ROLLER	2	
16	323-762	SPINDLE	1	
17	318-446	IDLE GEAR SET (2 PCS.)	2	
18	955-124	RING GEAR	1	
19	690-7ZZN	BALL BEARING 6907ZZ-N	1	
20	324-022	GASKET (A)	1	
21	323-758	INNER COVER	1	
22	323-755	FELT PACKING	1	
23	985-166	PACKING WASHER	1	
24	600-0DD	BALL BEARING 6000DDCMPS2L	1	
* 25	360-687C	ARMATURE 110V	1	
* 25	360-687U	ARMATURE ASS'Y 120V	1	INCLUD. 24, 45
* 25	360-687E	ARMATURE 220V-230V	1	
* 25	360-687F	ARMATURE 240V	1	
26	323-757	FAN GUIDE	1	
27	981-824	HEX. HD. TAPPING SCREW D4X45	2	
* 28	340-605C	STATOR 110V	1	
* 28	340-605D	STATOR 120V	1	
* 28	340-605E	STATOR 220V-230V	1	
* 28	340-605F	STATOR 240V	1	
* 29	985-186	INTERNAL WIRE (WHITE)	1	FOR KUW, INA, HKG, SIN, THA
* 29	985-192	INTERNAL WIRE (WHITE)	1	FOR USA, CAN
* 30	323-769	CHOKE COIL (WHITE)	1	FOR SAF, NZL, AUS, AUT, GBR, FRA, FRG, ITA, HOL, BEL, ESP, FIN, SUI, CHN
* 31	985-187	INTERNAL WIRE (BLACK)	1	FOR KUW, INA, HKG, SIN, THA
* 31	985-193	INTERNAL WIRE (BLACK)	1	FOR USA, CAN
* 32	323-770	CHOKE COIL (BLACK)	1	FOR SAF, NZL, AUS, AUT, GBR, FRA, FRG, ITA, HOL, BEL, ESP, FIN, SUI, CHN
33	980-063	TERMINAL	2	
34	303-694	TAPPING SCREW (W/FLANGE) D4X35 (BLACK)	1	
35	323-772	HANDLE COVER	1	
* 36	985-103	SWITCH (2P SCREW TYPE)	1	
* 36	320-528	SWITCH (2P SCREW TYPE)	1	FOR AUT, GBR, FRA, FRG, ITA, HOL, BEL, ESP, FIN, SUI
37	323-768	SWITCH ADAPTER	1	

PARTS

ITEM NO.	CODE NO.	DESCRIPTION	NO. USED	REMARKS
* 38	323-780	NOISE SUPPRESSOR ASS'Y (W/RESISTOR)	1	INCLUD. 39, 40, 43 FOR SAF, NZL, AUS, AUT, GBR, FRA, FRG, ITA, HOL, BEL, ESP, FIN, SUI, CHN
* 39	930-153	SUPPORT (B)	1	FOR NOISE SUPPRESSOR ASS'Y (W/RESISTOR)
* 40	316-186	SUPPORT (B)	1	FOR NOISE SUPPRESSOR ASS'Y (W/RESISTOR)
* 41	958-308Z	PILLAR TERMINAL (A)	1	
* 41	983-418Z	PILLAR TERMINAL (B)	1	FOR USA, CAN, SUI, KUW, INA, HKG, SIN, THA
	42	324-023	SUPPORT (B)	1
* 43	980-063	TERMINAL	1	FOR NOISE SUPPRESSOR ASS'Y (W/RESISTOR)
	44		NAME PLATE	1
	45	608-VVM	BALL BEARING 608VVC2PS2L	1
	46	985-198	RUBBER WASHER	1
	47	323-754	BEARING BUSHING (B)	1
	48	323-756	TAIL COVER	1
	49	301-653	TAPPING SCREW (W/FLANGE) D4X20 (BLACK)	2
	50	984-750	TAPPING SCREW (W/FLANGE) D4X16	2
	51	937-631	CORD CLIP	1
* 52	953-327	CORD ARMOR D8.8	1	
* 52	938-051	CORD ARMOR D10.1	1	
* 53	500-247Z	CORD	1	(CORD ARMOR D8.8)
* 53	500-450Z	CORD	1	(CORD ARMOR D8.8) FOR GBR (230V)
* 53	500-461Z	CORD	1	(CORD ARMOR D8.8) FOR GBR (110V)
* 53	500-248Z	CORD	1	(CORD ARMOR D8.8) FOR SUI
* 53	500-439Z	CORD	1	(CORD ARMOR D8.8) FOR AUS, NZL
* 53	500-240Z	CORD	1	(CORD ARMOR D8.8) FOR USA, CAN
* 53	500-423Z	CORD	1	(CORD ARMOR D8.8) FOR KUW, SIN
* 53	500-456Z	CORD	1	(CORD ARMOR D8.8) FOR CHN
* 53	500-435Z	CORD	1	(CORD ARMOR D8.8) FOR HKG
* 53	500-201Z	CORD	1	(CORD ARMOR D10.1) FOR THA
* 53	500-234Z	CORD	1	(CORD ARMOR D8.8) FOR INA
	54		HITACHI LABEL	1
	55	931-266	BRUSH CAP	2
	56	999-021	CARBON BRUSH (1 PAIR)	2
	57	957-571	BRUSH HOLDER	2
	58	323-771	HOUSING ASS'Y	1 INCLUD. 57, 59
	59	938-477	HEX. SOCKET SET SCREW M5X8	2

STANDARD ACCESSORIES

WR 16SA

ITEM NO.	CODE NO.	DESCRIPTION	NO. USED	REMARKS
* 501	323-774	SIDE HANDLE ASS'Y	1	INCLUD. 502-505 FOR SAF, NZL, AUS, AUT, GBR, FRA, FRG, ITA, HOL, BEL, ESP, FIN, SUI, CHN
* 502	980-901	SIDE HANDLE	1	FOR SIDE HANDLE ASS'Y
* 503	323-775	HANDLE HOLDER	1	FOR SIDE HANDLE ASS'Y
* 504	323-776	HANDLE RING	1	FOR SIDE HANDLE ASS'Y
* 505	980-903	SQUARE BOLT M8	1	FOR SIDE HANDLE ASS'Y
* 506	323-777	CASE (A)	1	FOR ESP

OPTIONAL ACCESSORIES

ITEM NO.	CODE NO.	DESCRIPTION	NO. USED	REMARKS
601	986-062	UNIVERSAL JOINT ASS'Y	1	INCLUD. 602, 603
602	873-537	SOCKET PIN	1	
603	873-187	O-RING (J1SW1516)	1	
604	873-536	HEX. SOCKET ASS'Y 17MMX32L	1	INCLUD. 602, 603
605	873-624	HEX. SOCKET ASS'Y 19MMX34L	1	INCLUD. 602, 603
606	873-626	HEX. SOCKET ASS'Y 21MMX36L	1	INCLUD. 602, 603
607	873-627	HEX. SOCKET ASS'Y 22MMX40L	1	INCLUD. 602, 603
608	873-628	HEX. SOCKET ASS'Y 23MMX40L	1	INCLUD. 602, 603
609	873-629	HEX. SOCKET ASS'Y 24MMX40L	1	INCLUD. 602, 603
610	873-630	HEX. SOCKET ASS'Y 26MMX40L	1	INCLUD. 602, 603
611	985-195	HEX. SOCKET ASS'Y 27MMX40L	1	INCLUD. 602, 603
612	985-196	HEX. SOCKET ASS'Y 30MMX50L	1	INCLUD. 602, 603
613	873-633	EXTENSION BAR ASS'Y (SQUARE) 12.7MMX100L	1	INCLUD. 602, 603
614	955-138	HEX. SOCKET ASS'Y (LONG) 12MMX52L	1	INCLUD. 602, 603
615	955-139	HEX. SOCKET ASS'Y (LONG) 13MMX52L	1	INCLUD. 602, 603
616	955-140	HEX. SOCKET ASS'Y (LONG) 14MMX52L	1	INCLUD. 602, 603
617	955-141	HEX. SOCKET ASS'Y (LONG) 17MMX52L	1	INCLUD. 602, 603
618	955-142	HEX. SOCKET ASS'Y (LONG) 19MMX52L	1	INCLUD. 602, 603
619	955-143	HEX. SOCKET ASS'Y (LONG) 21MMX52L	1	INCLUD. 602, 603
620	955-144	HEX. SOCKET ASS'Y (LONG) 22MMX52L	1	INCLUD. 602, 603
621	955-146	HEX. SOCKET ASS'Y (LONG) 24MMX52L	1	INCLUD. 602, 603
622	955-149	HEX. SOCKET ASS'Y (LONG) 17MMX75L	1	INCLUD. 602, 603
623	955-150	HEX. SOCKET ASS'Y (LONG) 19MMX75L	1	INCLUD. 602, 603
624	955-151	HEX. SOCKET ASS'Y (LONG) 21MMX75L	1	INCLUD. 602, 603
625	955-147	HEX. SOCKET ASS'Y (LONG) 26MMX75L	1	INCLUD. 602, 603
626	985-197	HEX. SOCKET ASS'Y (LONG) 30MMX75L	1	INCLUD. 602, 603
627	971-042	GREASE FOR IMPACT WRENCH (100G)	1	
628	323-774	SIDE HANDLE ASS'Y	1	INCLUD. 629-632
629	980-901	SIDE HANDLE	1	
630	980-903	SQUARE BOLT M8	1	
631	323-775	HANDLE HOLDER	1	

