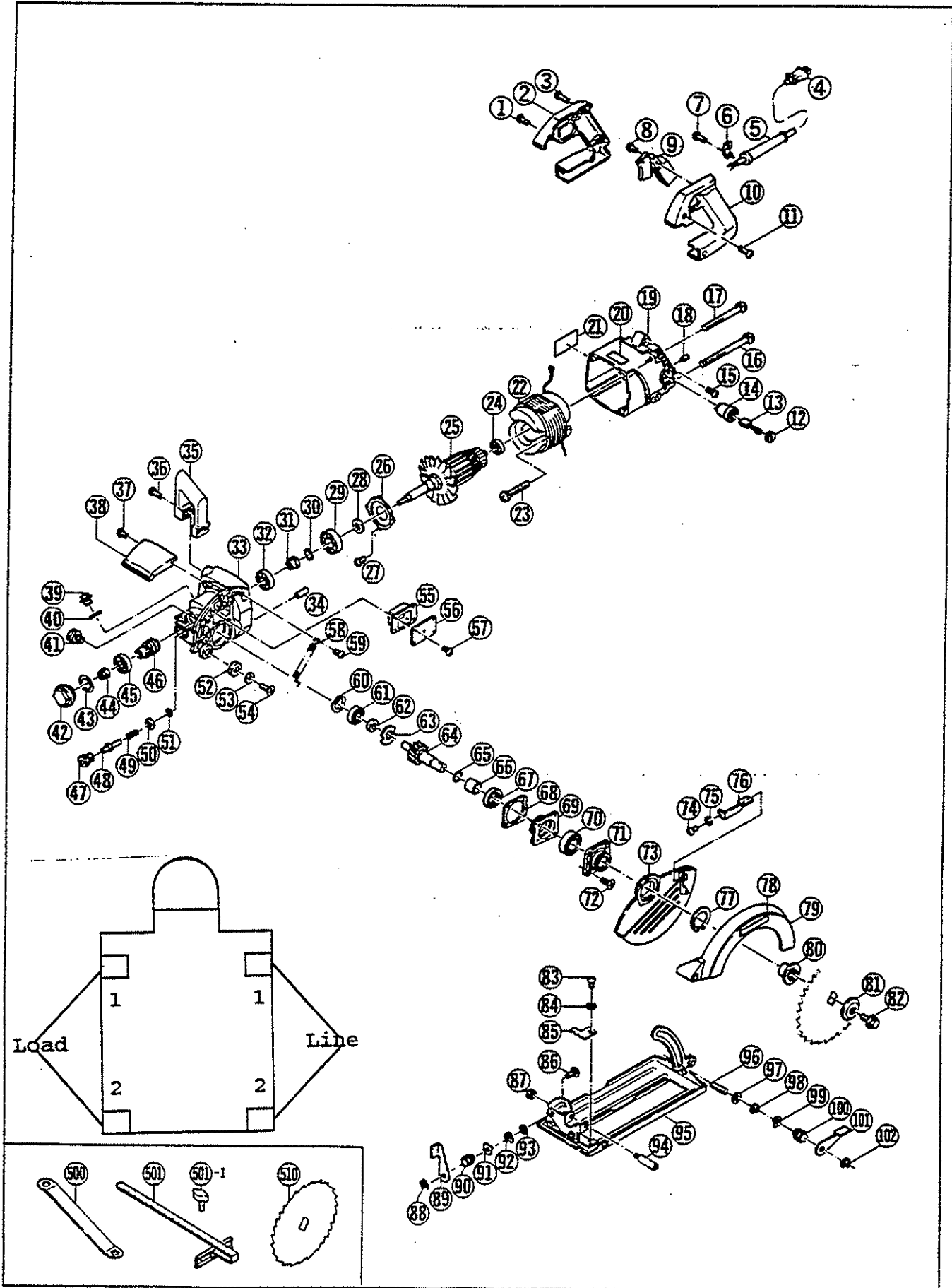


# WORM DRIVE SAW

## WD-600C



## PARTS LIST FOR AFTER SALES SERVICE MODEL WD600C

REF	PART NO.	DESCRIPTION	QTY	REF	PART NO.	DESCRIPTION	QTY
1	9040516	TAPPING SCREW (S) M5X16	2 58	6180480	TENSION SPRING	1	
	6831765	HANDLE (B)	1 59	9040410	TAPPING SCREW (S) M4X10	1	
3	9060420	TAPPING SCREW (B) M4X20	3 60	9643200	WAVE WASHER	1	
4	6520457	CORD ASS'Y AWG16X3X2.5	1 61	9826201	BALL BEARING #6201LLB	1	
5	6560047	CORD HOLDER	1 62	6190452	COLLAR	1	
6	6560067	CORD CLAMP	1 63	6154123	LOCK DISC	1	
7	9060416	TAPPING SCREW (B) M4X16	2 64	6050151	WORM WHEEL	1	
8	9060414	TAPPING SCREW (B) M4X14	1 65	9780015	O-RING S-15	1	
9	6550084	TRIGGER SWITCH	1 66	6220290	COLLAR	1	
10	6831762	HANDLE (A)	1 67	6830142	OIL SEAL	1	
11	9040516	TAPPING SCREW (S) M5X16	2 68	6930138	PACKING	1	
12	6570107	BRUSH CAP	2 69	6820838	GEAR CASE COVER	1	
13	6540063	CARBON BRUSH SET	1 70	971803001	BALL BEARING #6203LLU	1	
14	6570097	BRUSH HOLDER	2 71	6190453	GUARD PLATE	1	
15	9020406	PHILLIPS PAN SCREW M4X6	1 72	9140520	PHILLIPS FLAT SCREW M5X20	4	
16	6131042	PHILLIPS PAN SCREW M6X125	2 73	6881138	LOWER GUARD	1	
17	9020690	PHILLIPS PAN SCREW M6X90	2 74	9040410	TAPPING SCREW (S) M4X10	1	
18	9280506	CLAMP SCREW M5X6	2 75	9550400	SPRING WASHER M4	1	
19	6801493	MOTOR HOUSING	1 76	6154135	GUARD LEVER	1	
20	6921399	"RYOBI" MARK	1 77	9513400	RETAINING RING S-34	1	
21	6912747	NAME PLATE	1 78	6921063	"RYOBI" MARK	1	
22	6501701	FIELD COIL	1 79	6881137	SAFETY GUARD	1	
23	9020555	PHILLIPS PAN SCREW M5X55	2 80	6940523	INNER FLANGE	1	
24	622274001	BALL BEARING #608LLB	1 81	6940524	OUTER FLANGE	1	
25	6032357	ARMATURE	1 82	6131060	HEX HEAD BOLT (L.H.T.) M8X20	1	
26	6154129	BEARING CLAMP	1 83	9020406	PHILLIPS PAN SCREW M4X6	1	
	9020408	PHILLIPS PAN SCREW M4X8	4 84	9560400	WASHER	1	
	6900769	SPACER	1 85	6154120	INDICATION PLATE	1	
29	971803001	BALL BEARING #6203LLB	1 86	9230820	ROUND HEAD BOLT M8X20	1	
30	6930014	O-RING P-12.5	1 87	9300600	HEX NUT M6	1	
31	6220294	SEAL COLLAR	1 88	6100766	RETAINING RING K-50	1	
32	6930141	OIL SEAL	1 89	6154132	LEVER	1	
33	6820837	GEAR CASE	1 90	6220295	DOMED CAP NUT M8	1	
34	9403014	SPRING PIN	1 91	9642400	WAVE WASHER	1	
35	6831768	SIDE HANDLE	1 92	6100766	RETAINING RING K-50	1	
36	9040520	TAPPING SCREW (S) M5X20	3 93	9570800	WASHER	1	
37	9060414	TAPPING SCREW (B) M4X14	2 94	6100765	HINGE PIN	1	
38	6360368	HOOD	1 95	6010171	BASE PLATE	1	
39	6220293	OIL PLUG	1 96	9290830	CLAMP SCREW M8X30	1	
40	9780016	O-RING S-16	1 97	9570800	WASHER	1	
41	6131043	HEX HEAD BOLT M6X12	2 98	6100766	RETAINING RING K-50	1	
42	6360369	BEARING COVER	1 99	9642400	WAVE WASHER	1	
43	9780032	O-RING S-32	1 100	6220295	DOMED CAP NUT M8	1	
44	6131114	NYLON NUT	1 101	6154132	LEVER	1	
45	969235005	BALL BEARING #6200LLB	1 102	6100766	RETAINING RING K-50	1	
46	6200516	WORM GEAR	1 --	6530209	FASTEN CONNECTOR	1	
47	6220291	BUSH	1 --	6530211	SLEEVE COVER	1	
48	6220292	LOCK PIN	1 --	6560005	TERMINAL	1	
49	6180064	COMPRESSION SPRING	1 --	6560018	TERMINAL	4	
50	9560800	WASHER	1 --	9674316	LEAD WIRE	1	
51	9760008	O-RING P-8	1 --	9690070	EMPIRE TUBE 7	1	
52	6370339	STOPPER RUBBER	1				
5	6900768	WASHER	1		STANDARD ACCESSORIES		
54	9150516	FLAT TAPPING SCREW (S) M5X16	1 500	6241223	BOX-END WRENCH 13X13	1	
55	6370338	EXPANSION CHAMBER	1 501	6072103	SAW GUIDE FENCE SET	1	
56	6154126	CLAMP PLATE	1 501-1	9240510	WING BOLT M5X10	1	
57	9040410	TAPPING SCREW (S) M4X10	4 510	6650723	7-1/4" SAW BLADE	1	