

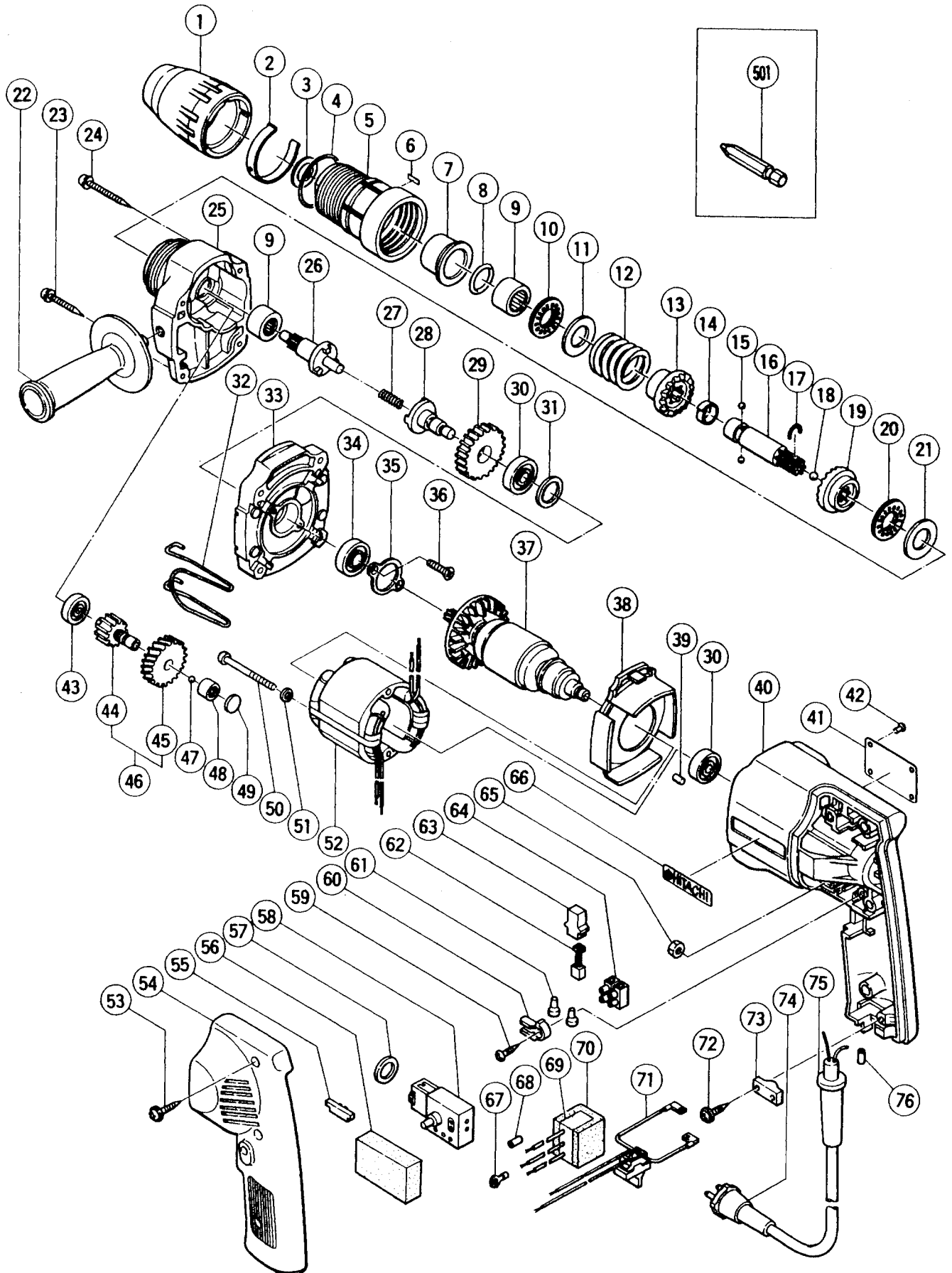
## ELECTRIC TOOL PARTS LIST

■ SCREW DRIVER

1984·11·8

Model W6VE

W6VE(E1)



## PARTS

W6VE(E1)

Item No.	Code No.	Parts Name	Q'ty	Remarks
1	992705	Adjust Ring Ass'y	1	includ. 2
2	992668	Click Ring	1	
3	992669	Washer	1	
4	980879	O-Ring (S34)	1	
5	992706	Protection Sleeve	1	
6	—	Label	1	
7	992665	Adjust Sleeve Ass'y	1	includ. 8, 9
8	982564	O-Ring (1AP-15)	1	
9	993163	Needle Bearing (M152112)	2	
10	992704	Thrust Needle Bearing	1	
11	992664	Thrust Washer	1	
12	992703	Adjust Spring (E)	1	
13	992701	Ratchet (B)	1	
14	872573	Set Ring	1	
15	939270Z	Steel Ball D3.175	2	(10 pcs.)
16	992702	Spindle	1	
17	992660	Retaining Ring	1	
18	939272Z	Steel Ball D6.35	1	(10 pcs.)
19	992700	Ratchet (A)	1	
20	992697	Thrust Needle Bearing	1	
21	992699	Thrust Washer	1	
22	—	Side Handle	1	See alternative parts
23	986140	⊕Hd. Tapping Screw D5 x 35	2	w/Spring Lock Washer
24	983981	⊕Hd. Tapping Screw D5 x 45	2	w/Spring Lock Washer
25	—	Gear Cover Ass'y	1	See alternative parts
26	993160	Clutch (B)	1	
27	992656	Spring	1	
28	992696	Clutch (A)	1	
29	992695	Final Gear	1	
30	939396	Ball Bearing (608ZZC2)	2	
31	933545	Washer (A)	1	
32	950511	Hook	1	
33	985310	Inner Cover	1	
34	939352	Ball Bearing (608DDC2)	1	
35	971659	Bearing Holder	1	
36	990430	⊕Flat Hd. Screw M4 x 10	2	(Seal Lock Screw)
37	—	Armature	1	See alternative parts
38	971642	Fan Guide	1	
39	946362	Bearing Lock	1	
40	981110	Housing	1	
41	—	Name Plate	1	
42	—	Rivet	4	See alternative parts
43	939401	Ball Bearing (626C2)	1	
44	993161	Second Pinion (E)	1	
45	993162	First Gear	1	
46	992698	Second Pinion Ass'y (E)	1	includ. 44, 45
47	939363Z	Steel Ball D3.969	1	(10 pcs.)
48	670714	Needle Bearing (HK0810)	1	
49	992715	Washer (C)	1	
50	949278Z	⊕Hd. Machine Screw M4 x 55	2	(10 pcs.)
51	949453Z	Spring Lock Washer	2	for M4 (10 pcs.)
52	—	Stator	1	See alternative parts
53	956636	⊕Hd. Tapping Screw D4 x 25	3	w/Washer

## PARTS

W6VE(E1)

Item No.	Code No.	Parts Name	Q'ty	Remarks
54	981112	Handle Cover	1	
55	980135	Rubber Holder	1	
56	982565	Support (B)	1	
57	971510	Packing (A)	1	
58	—	Speed Control Switch	1	See alternative parts
59	954004	⊕Hd. Tapping Screw	D4 x 16	2
60	971655	Holder Piece		2
61	—	Connector		2 See alternative parts
62	999041	Carbon Brush		2 (2 pcs.)
63	955203	Brush Holder		2
64	—	Pillar Terminal (A)		1 See alternative parts
65	949554Z	Nut	M4	2 (10 pcs.)
66	957561	HITACHI Label		1
67	—	Terminal		1 See alternative parts
68	—	Tube (D)		1 See alternative parts
69	—	Noise Suppressor		1 See alternative parts
70	—	Support (B)		1 See alternative parts
71	—	Reversing Switch		1 See alternative parts
72	984750	Tapping Screw	D4 x 16	2 w/Flange
73	937631	Cord Clip		1
74	—	Cord		1 See alternative parts
75	—	Cord Armor		1 See alternative parts
76	—	Tube (D)		2 See alternative parts

## ALTERNATIVE PARTS

Item No.	Code No.	Parts Name	Q'ty	Remarks
22	954672	Side Handle	1	except U.S.A., Canada
25	992708	Gear Cover Ass'y	1	includ. 9
	992709	Gear Cover Ass'y	1	for U.S.A., Canada includ. 9
37	992707C	Armature	110V ~ 127V	1
	992707E	Armature	220V ~ 230V	1
	992707F	Armature	240V	1
	992707J	Armature	110V	1 for U.K.
	992707G	Armature	220V ~ 230V	1 for S. Africa, Italy, France, Holland, Denmark, Finland, Sweden, Austria, Norway
	992707H	Armature	240V	1 for U.K.
42	932642	Rivet	D2.5 x 2.8	4 for Canada
52	985313C	Stator	110V ~ 115V	1
	985313D	Stator	120V ~ 127V	1
	985313E	Stator	220V ~ 230V	1
	985313F	Stator	240V	1
	985313K	Stator	110V	1 for U.K.
	985313L	Stator	220V	1 for F.R. Germany, Switzerland
	985313G	Stator	220V ~ 230V	1 for S. Africa, Italy, France, Holland, Denmark, Austria
	985313J	Stator	220V ~ 230V	1 for N.Z., Finland, Sweden, Norway
	985313H	Stator	240V	1 for U.K.
58	982558Z	Speed Control Switch	110V ~ 127V	1
	982559Z	Speed Control Switch	220V ~ 240V	1

**ALTERNATIVE PARTS**

**W6VE(E1)**

Item No.	Code No.	Parts Name	Q'ty	Remarks
61	939310Z	Connector (50091)	2	(10 pcs.)
64	958308Z	Pillar Terminal (A)	110V ~ 115V	1 except U.K.
67	980063	Terminal	1	for Noise Suppressor
68	981373	Tube (D)	1	for Noise Suppressor
69	985346	Noise Suppressor	1	for N.Z., U.K., S. Africa, Italy, F.R. Germany, France, Holland, Denmark, Finland, Sweden, Austria, Norway
	982043Z	Noise Suppressor	1	for Switzerland
70	930153	Support (B)	1	for Noise Suppressor
71	985315	Reversing Switch	110V ~ 115V	1
	985316	Reversing Switch	120V ~ 240V	1
	985318	Reversing Switch	220V	1 for Holland, Austria
	985317	Reversing Switch	230V ~ 240V	1 for N.Z., U.K., S. Africa, Italy, F.R. Germany, France, Denmark, Finland, Sweden, Norway, Switzerland
74	500201Z	Cord	110V ~ 240V	1 (Cord Armor D10.2)
	500409Z	Cord	110V ~ 220V	1 for Indonesia, Surinam, Italy, France, F.R. Germany, Holland, Austria (Cord Armor D8.2)
	500245Z	Cord	110V ~ 220V	1 for Syria (Cord Armor D10.2)
	500231Z	Cord	110V ~ 240V	1 for U.K., S. Africa (Cord Armor D8.2)
	500240Z	Cord	115V	1 for U.S.A., Canada (Cord Armor D8.2)
	500247Z	Cord	220V	1 for Denmark, Finland, Sweden, Norway (Cord Armor D10.2)
	500248Z	Cord	220V	1 for Switzerland (Cord Armor D10.2)
	500223Z	Cord	230V ~ 240V	1 for Singapore, Kuwait (Cord Armor D10.2)
	500226Z	Cord	230V ~ 240V	1 for Papua New Guinea, N.Z. (Cord Armor D8.2)
	500405Z	Cord	240V	1 for Australia (Cord Armor D10.2)
75	930026	Cord Armor	D10.2	1
	930487	Cord Armor	D8.2	1
76	981373	Tube (D)	2	for Cord

**STANDARD ACCESSORIES**

Item No.	Code No.	Parts Name	Q'ty	Remarks
501	992671	Plus Bit (B)	No. 2 x 50	1

**OPTIONAL ACCESSORIES**

Item No.	Code No.	Parts Name	Q'ty	Remarks
601	992670	Plus Bit (B)	No. 1 x 50	1
602	992672	Plus Bit (B)	No. 3 x 50	1
603	992673	Plus Bit (B)	No. 1 x 50	1 w/Stepped Rod
604	992674	Plus Bit (B)	No. 2 x 50	1 w/Stepped Rod
605	992675	Minus Bit (B)	4 x 50	
606	992676	Minus Bit (B)	5 x 50	1
607	992677	Minus Bit (B)	6 x 50	1
608	992678	Minus Bit (B)	8 x 50	1
609	992679	Minus Bit (B)	4 x 50	1 w/Stepped Rod
610	992680	Minus Bit (B)	5 x 50	1 w/Stepped Rod
611	992681	Hexagon Bit	3 x 25	1



