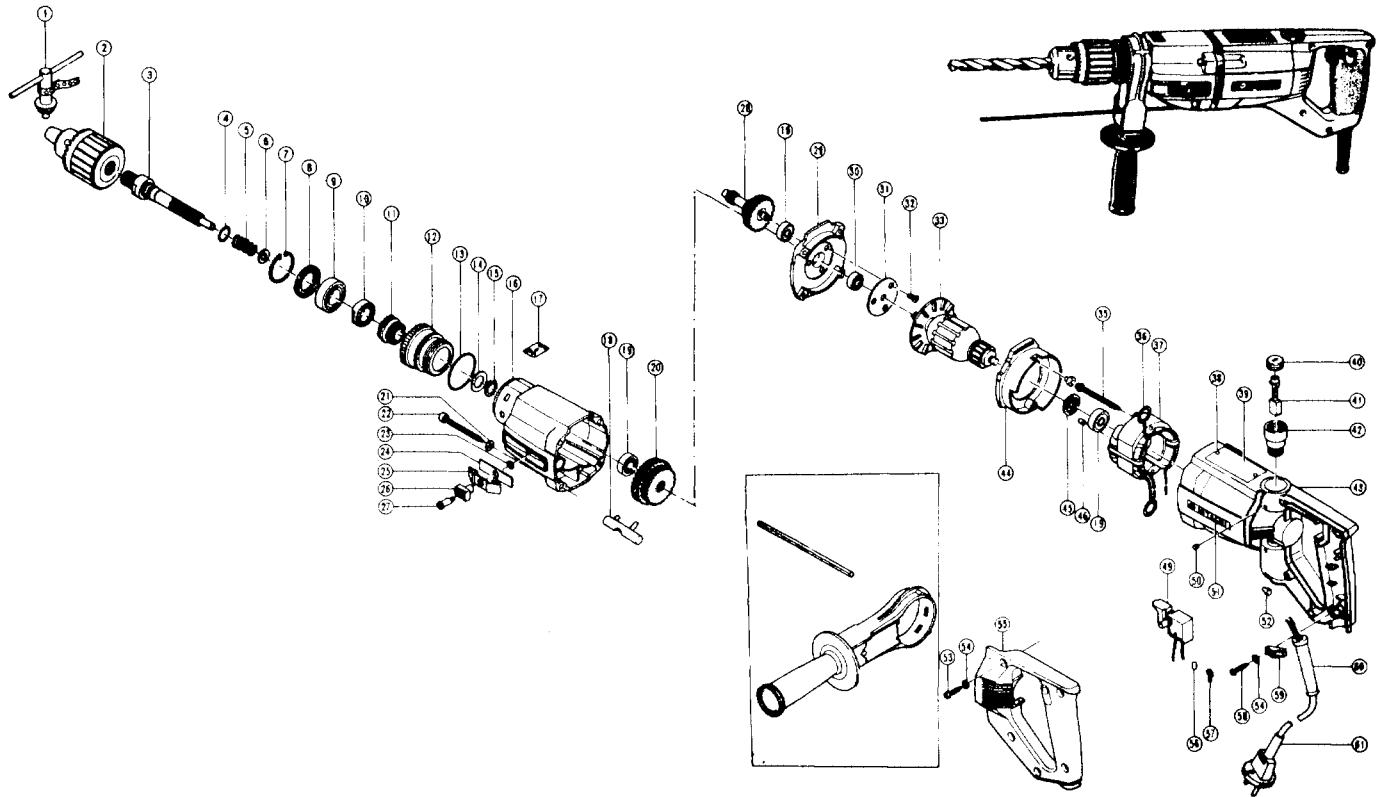




# HITACHI

## 5/8" HAMMER DRILL

## Model VTP-16A



ITEM NO.	PART NO.	NO. USED	DESCRIPTION	SUPPLY Q'TY	ITEM NO.	PART NO.	NO. USED	DESCRIPTION	SUPPLY Q'TY
1	930733	1	Chuck Wrench		31	981585	1	Bearing Holder	
2	950284	1	Drill Chuck Assembly (includes Item 1) 16WL		32	981588	1	Flat Hexagon Socket Head Screw M5	
3	981566	1	Spindle		33	981611C	1	Armature	
4	876319	1	O-Ring (S-14)		35	981561	2	Tapping Screw D5×60	
5	981568	1	Spring		36	930703	2	Brush Terminal	
6	971657	1	Washer		37	981610C	1	Stator	
7	939556	1	Retaining Ring D35	10	38	932642	2	Rivet	
8	981572	1	Dust Seal		39	—	1	Name Plate	
9	6003VV	1	Ball Bearing 6003VVCMP2S		40	961781	2	Brush Cap	
10	981567	1	Ratchet (B)		41	981612Z	2	Carbon Brush Auto-stop type	2
11	981565	1	Ratchet (A)		42	981586	2	Brush Holder	
12	981571	1	Change Ring		43	981560	1	Housing (includes Item 42,50)	
13	980717	1	O-Ring (S-38)		44	981562	1	Fan Guide	
14	971736	1	Washer (B)		45	956387	1	Dust Seal (A)	
15	939543	1	Retaining Ring D14	10	46	946362	1	Bearing Lock	
16	981564	1	Gear Cover		49	957747	1	Single Pole Switch	
17	971661	1	Label		50	949365	2	Set Screw M4×5	10
18	981573	1	Shift Rod		51	957561	1	HITACHI Label	
19	608VVM	3	Ball Bearing 608VVMC2EPS2L		52	959140	1	Connector 50091	10
20	981570	1	Gear		53	956384	5	Tapping Screw D4×20	
21	949454	6	Spring Washer M5	10	54	949423	6	Washer M4	10
22	955912	4	Tapping Screw D5×45		55	981578	2	Handle Cover	
23	942864	1	Super Lock washer		56	981373	2	Tube (D)	
24	981574	1	Seal Plate		57	938108	1	Terminal	
25	981575	1	Shift Spring		58	954004	2	Tapping Screw D4×16	
26	981576	1	Shift Lever		59	960266	1	Cord Clip	
27	981577	1	Flat Head Screw M5		60	953327	1	Cord Armor	
28	981569	1	Second Pinion		61	500240Z	1	Cord	
29	981581	1	Inner Cover		62	982805Z	1	Terminal	
30	609VVM	1	Ball Bearing 609VVMC2PS2S						