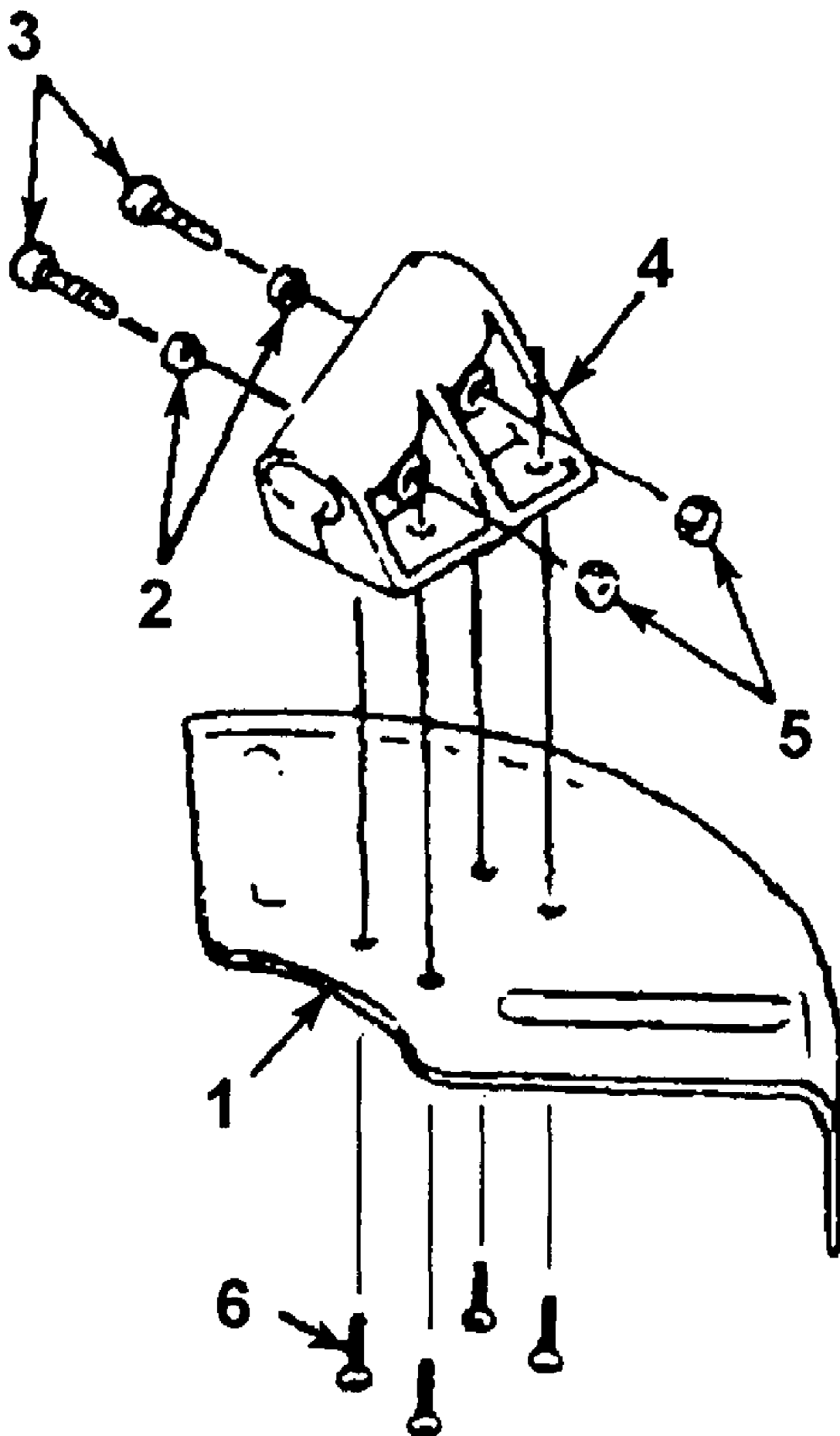
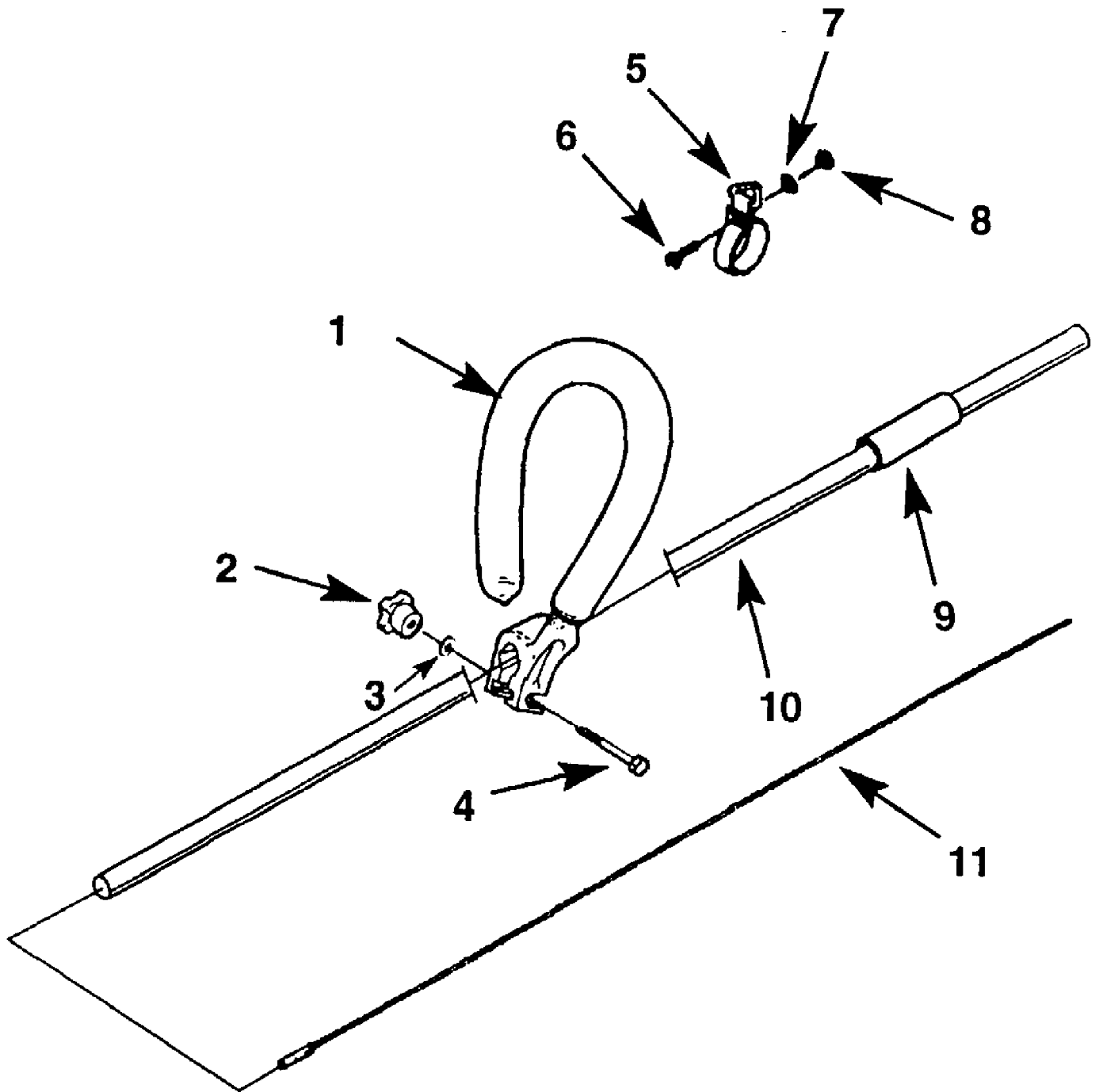


Carburetor - Air Filter - Fuel Tank

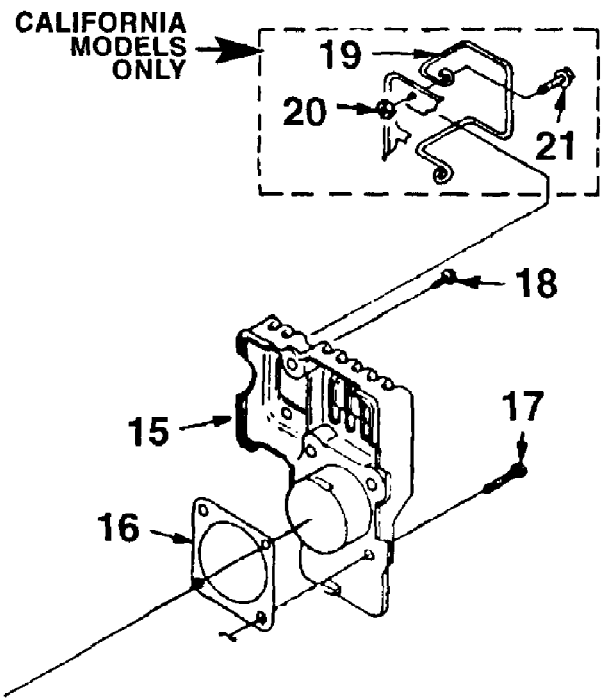
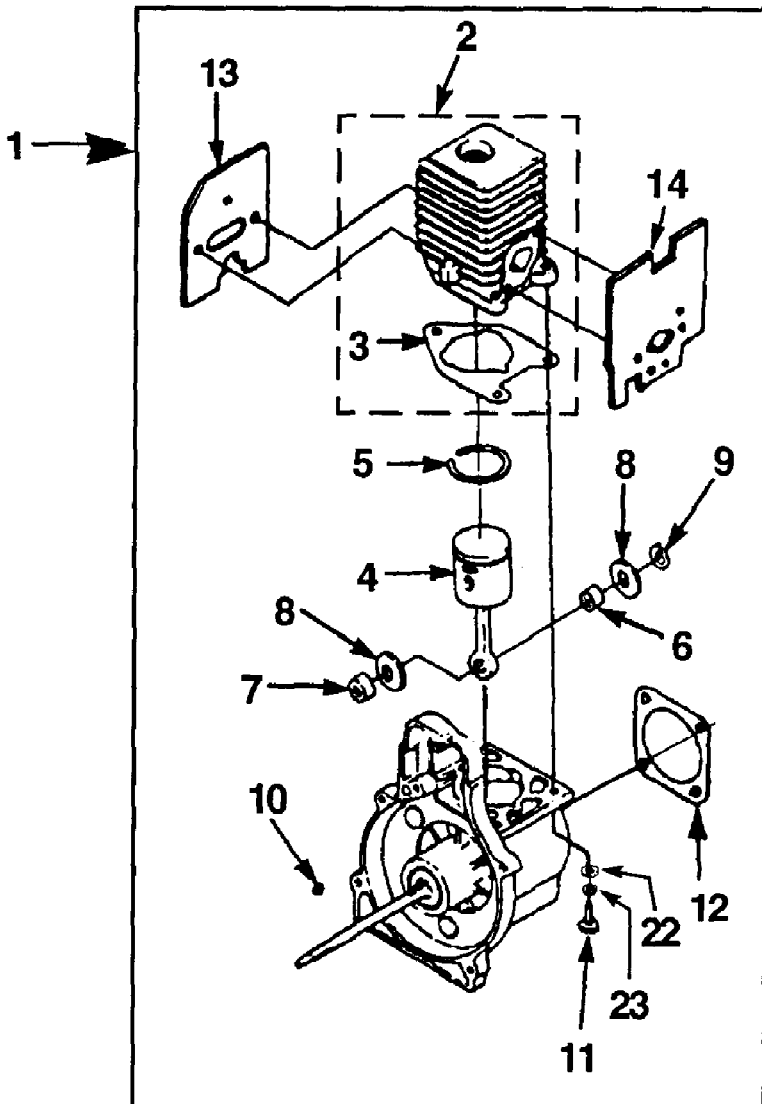
Ref #	Part Number	Qty	S/P/F	Description
1	A04447D	1	S	Fuel Tank
2	49422	1	S	Filter - Fuel
3	0143932	1	S/P	Tubing - Rubber (8")
4	9477232	1	S	Tubing - Rubber (8")
5	98268	1	S/P	Clamp - Wire
6	A00982B	1	S	Fuel Cap
7	98792	3	/P	Bumper - Rubber
8	A04707A	1	/P	Air Filter Kit
9	D98760B	1	S	Air Filter
10	88060	2	S/P	Screw - Sems Hex Hd (10-24 x 2 1/2") Torque Specs:30-40 In/Lbs; 3.4-4.5 Nm
11	A04445A	1	/P	Carburetor
12	98766A	1	S/P	Gasket, Carburetor
13	093221	2	S/P	Screw, Sems (10-24 x 1") Torque Specs:73-83 In/Lbs; 8.2-9.4 Nm
14	00864B	1	S	Heat Dam
15	08840	1	/P	Heat Dam Gasket Also included in Short Block & Cylinder Kit
16	81208	2	/P	Nut - Hex (10-24)



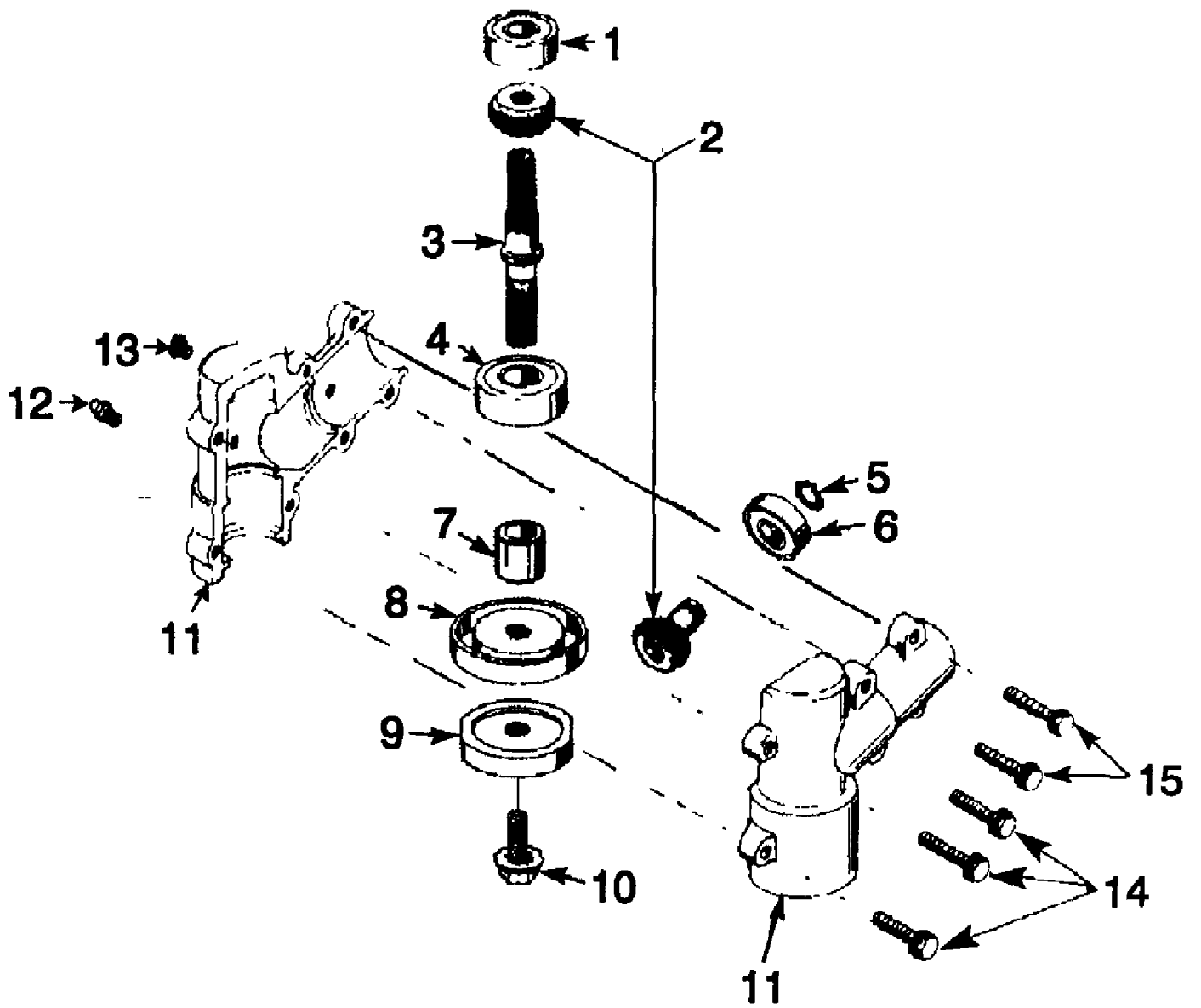
Ref #	Part Number	Qty	S/P/F	Description
	GM24700A	1	/P	Blade Guard Assembly
1	GM247001	1	S	Blade Guard
2	GM040002	2		Washer
3	GM011417	2	/P	Screw Torque Specs: 25-35 In/Lbs; 2.8-4.0 Nm
4	GM245201	1		Bracket, Guard
5	GM051012	2		Nut Torque Specs: 25-35 In/Lbs; 2.8-4.0 Nm
6	GM011423	4	S	Screw, Self Tapping Torque Specs: 40-50 In/Lbs; 4.5-5.6 Nm



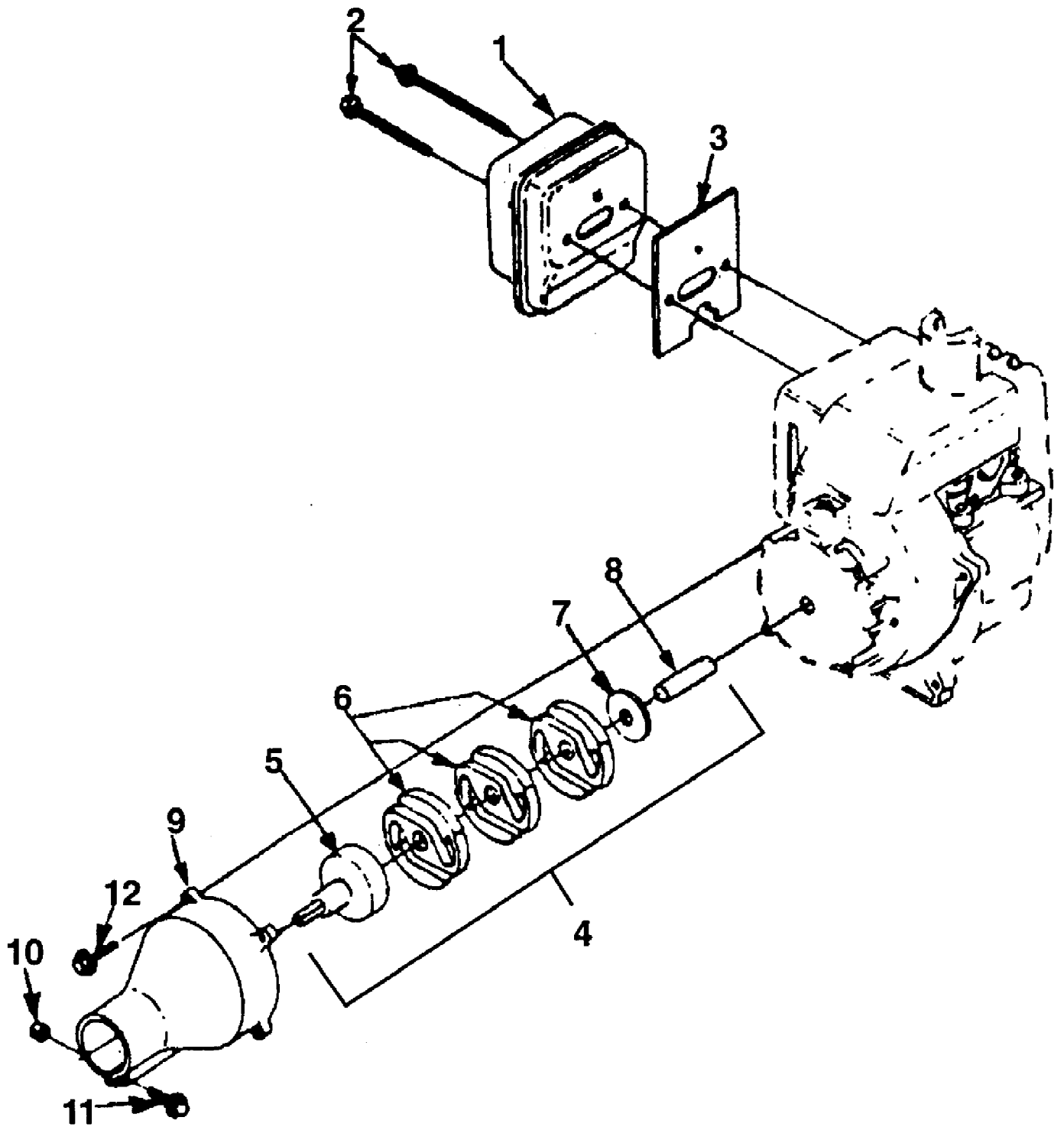
Ref #	Part Number	Qty	S/P/F	Description
1	GM300302	1		Handle Assembly
2	08290	1	/P	Knob Torque Specs: 5-30; .5-3.4 Nm
3	84006	1	/P	Washer
4	80295	1	/P	Screw Torque Specs: 5-30; .5-3.4 Nm
5	GM300245	1	S	Hanger Assembly
6	GM010002	1	/P	Screw Torque Specs: 25-35; 2.8-4.0 Nm
7	GM041101	1	/P	Washer
8	GM050003	1		Nut Torque Specs: 25-35; 2.8-4.0 Nm
9	GM300038	1	/P	Grip
10	GM280341	1		Tube Kit
11	GM287801	1		Flex Cable



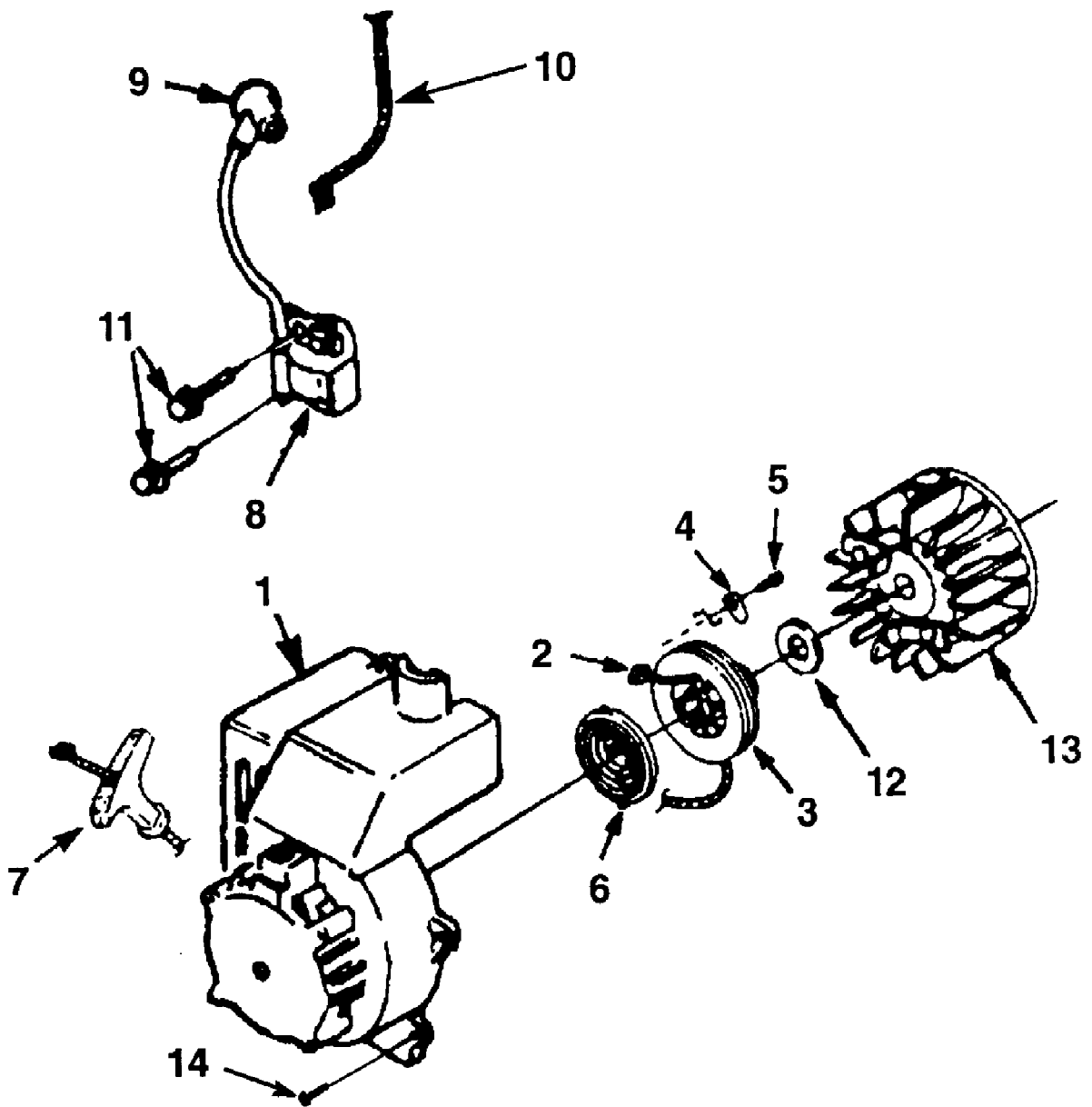
Ref #	Part Number	Qty	S/P/F	Description
1	UP08658	1	S	Short Block
2	UP07146	1	S/P	Cylinder & Gasket
3	04388B	1	S/P	Cylinder Gasket
4	A06291B	1	S	Piston & Rod
5	04933	1	/P	Piston Ring
6	02461	1		Needle Bearing
7	04860	1		Spacer
8	00118	1		Thrust Washer
9	03796	1		Retaining Ring
10	69250	1	/P	Woodruff Key
11	880841	3	S	Screw, Sems (12-24 x 3/4") Torque Specs: 65-75 In/Lbs; 7.3-8.5 Nm
12	08661	1	/P	Crankcase Gasket Also included in Short Block & Cylinder Kit
13	08846	1	/P	Muffler Gasket Also included in Short Block & Cylinder Kit
14	08840	1	/P	Heat Dam Gasket Also included in Short Block & Cylinder Kit
15	A00858	1	/P	Crankcase Cover
16	08661	1	/P	Crankcase Gasket Also included in Short Block & Cylinder Kit
17	880811	4	/P	Screw - Taptite (10-24 x .910) Torque Specs: 55-60 In/Lbs; 6.2-6.8 Nm
18	82541	4	/P	Screw - Plastite (10 x 1/2") Torque Specs: 30-40 In/Lbs; 3.4-4.5 Nm
19	A00254A	1	/P	Wire Guard Kit
20	81208	2	/P	Nut (10-24)'
21	88049	2	/P	Screw - Sems Hex Hd. (10-24 x 1/2") Torque Specs: 30-40 In/Lbs; 3.4-4.5 Nm
22	84115	3	S/P	Washer, Flat
23	83056	3		Washer, Lock



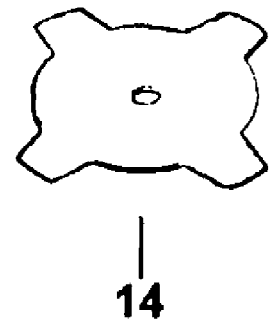
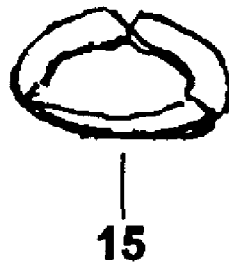
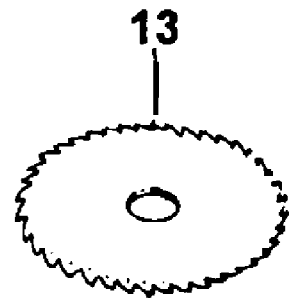
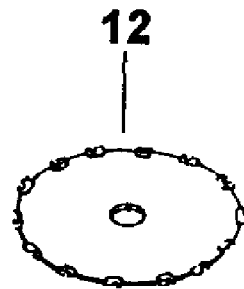
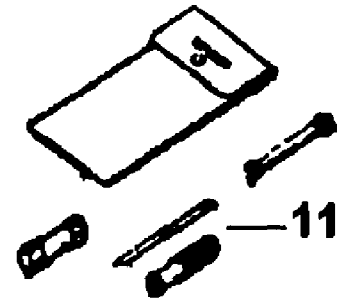
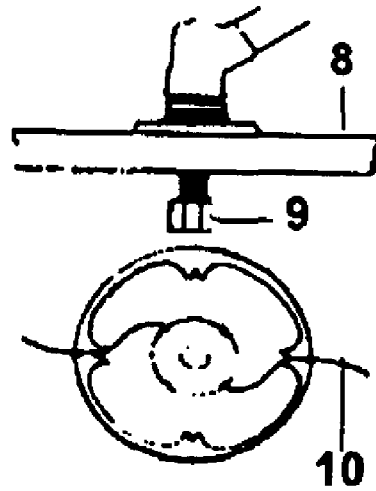
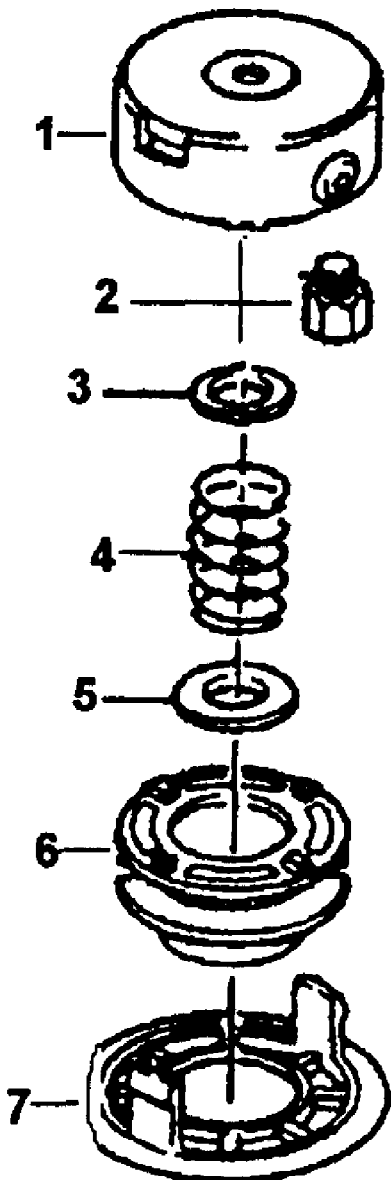
Ref #	Part Number	Qty	S/P/F	Description
	GM270303	1	S	Gearcase Assembly
1	09147	1		Bearing
2	GM190609	1	/P	Gear Set
3	GM226706	1		Shaft, Gear
4	09141	1		Bearing
5	09151	1	/P	Ring
6	09134	1	S	Bearing
7	GM226705	1		Collar
8	GM300070	1		Upper Flange Washer
9	GM300075	1	S	Lower Flange Washer
10	09140	1	S	Sems Screw, Blade Torque Specs: 55-65 In/Lbs; 6.2-7.3 Nm
11	GM270306	1		Housing Set
12	GM286716	1	/P	Fitting, Zerk
13	82459	1	/P	Screw, Self Tapping Torque Specs: 40-50 In/Lbs; 4.5-5.6 Nm
14	825491	3	S	Screw, Self Tapping Torque Specs: 40-50 In/Lbs; 4.5-5.6 Nm
15	825491	2	S	Screw, Self Tapping Torque Specs: 40-50 In/Lbs; 4.5-5.6 Nm



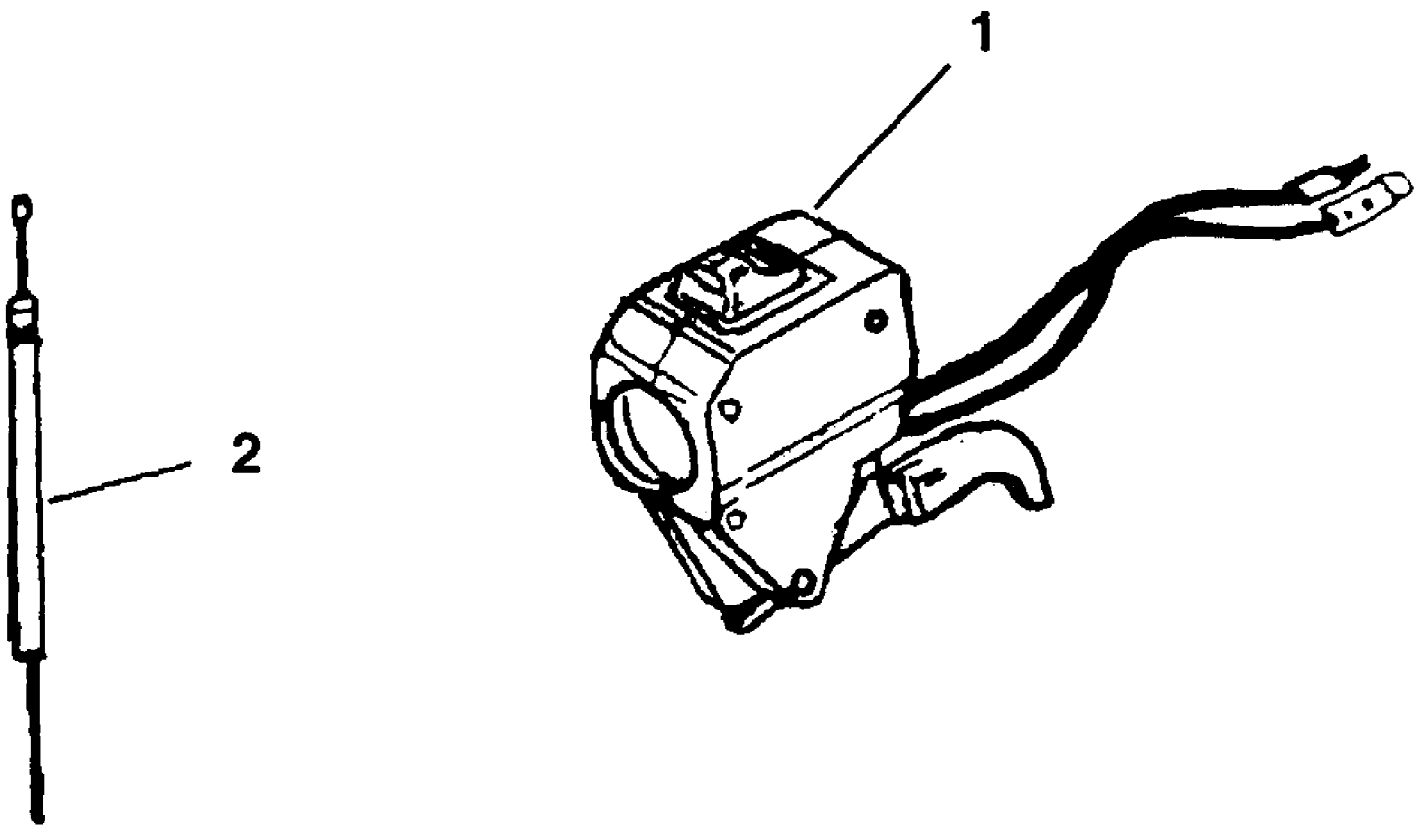
Ref #	Part Number	Qty	S/P/F	Description
1	A04837	1	/P	Complete Muffler
2	88060	2	S/P	Screw - Sems Hex Hd. Torque Specs: 30-40 In/Lbs; 3.4 - 4.5 Nm
3	98786C	1	/P	Muffler Gasket Also included in Short Block & Cylinder Kit
4	A04655	1		Clutch & Drum Kit
5	A03485B	1	S	Drum & Connector Torque Specs: 40-50 In/Lbs; 4.5 - 5.6 Nm
6	00242	3	/P	Clutch Torque Specs: 30-40 In/Lbs; 10.1 - 12.4 Nm
7	98929A	1	S/P	Washer, Clutch
8	PS035661	1	/P	Spacer
9	A09008	1	S	Tube Adapter Kit
10	81208	1	/P	Nut, Lock
11	96624	1	/P	Screw (10-24 X 1 1/8") Torque Specs: 40-50 In/Lbs; 3.4 - 4.5 Nm
12	88052	4	/P	Screw (10-24 X 7/8") Torque Specs: 40-50 In/Lbs; 4.5 - 5.6 Nm



Ref #	Part Number	Qty	S/P/F	Description
1	A08987	1		Starter/Engine Housing
2	9789902	1	S/P	Starter Rope (42")
3	98770A	1	/P	Starter Pulley
4	98791	2	/P	Retaining Bracket
5	82541	2	/P	Screw - Plastite (10 X 1/2") Torque Specs: 30-40 In/Lbs; 3.4 - 4.5 Nm
6	A98773A	1	S/P	Spring & Container
7	02264	1	S	Starter Grip
8	94711CS	1	/P	Ignition Module
9	A33055	1	/P	Terminal & Cover
10	A00681	1		Electrical Lead
11	82540	2	/P	Screw - Thread Forming (8-32 X 1") Torque Specs: 30-40 In/Lbs; 3.4 - 4.5 Nm
12	95479A	1	/P	Flat Washer
13	A04158S	1	S	Rotor & Starter Pawls
14	82538	4	/P	Screw - Thread Forming (10-24 X 3/4") Torque Specs: 25-35 In/Lbs; 2.8 - 3.9 Nm



Ref #	Part Number	Qty	S/P/F	Description
	DG07796	1	/P	4" TFC String Head Assembly
1	GM180302	1	/P	String Head Body
2	GM226701	1	/P	Arbor Bolt Torque Specs: 55-65 In/Lbs; 6.2-7.3 Nm
3	GM166903	1		Spring Plate
4	GM167901	1	S	Spring
5	GM166903	1		Spring Plate
6	GM185206	1	S	Spool
7	GM185205	1	/P	Cap
8	DG07799	1		Fixed Line Head Assy (Opt.)
9	GM325205	1		Arbor Bolt Torque Specs: 55-65 In/Lbs; 6.2-7.3 Nm
10	DG07809	1	/P	Green Line .105 X 20 ft.
11	GM280603	1		Tool Kit
12	DG07817	1		8" XRTBlade (Opt.)
13	DG07815	1	/P	8" Saw Blade (Opt.)
14	DG07813	1	/P	8" Quad Blade (Opt.)
15	GM94110	1	/P	Blade Cover (Opt.)



Ref #	Part Number	Qty	S/P/F	Description
1	A08423B	1	S	Throttle Assembly
2	0254206	1	S	Throttle Cable