

Multipurpose tool - F 013 US4 000 - US40

www.powertools-aftersaleservice.com

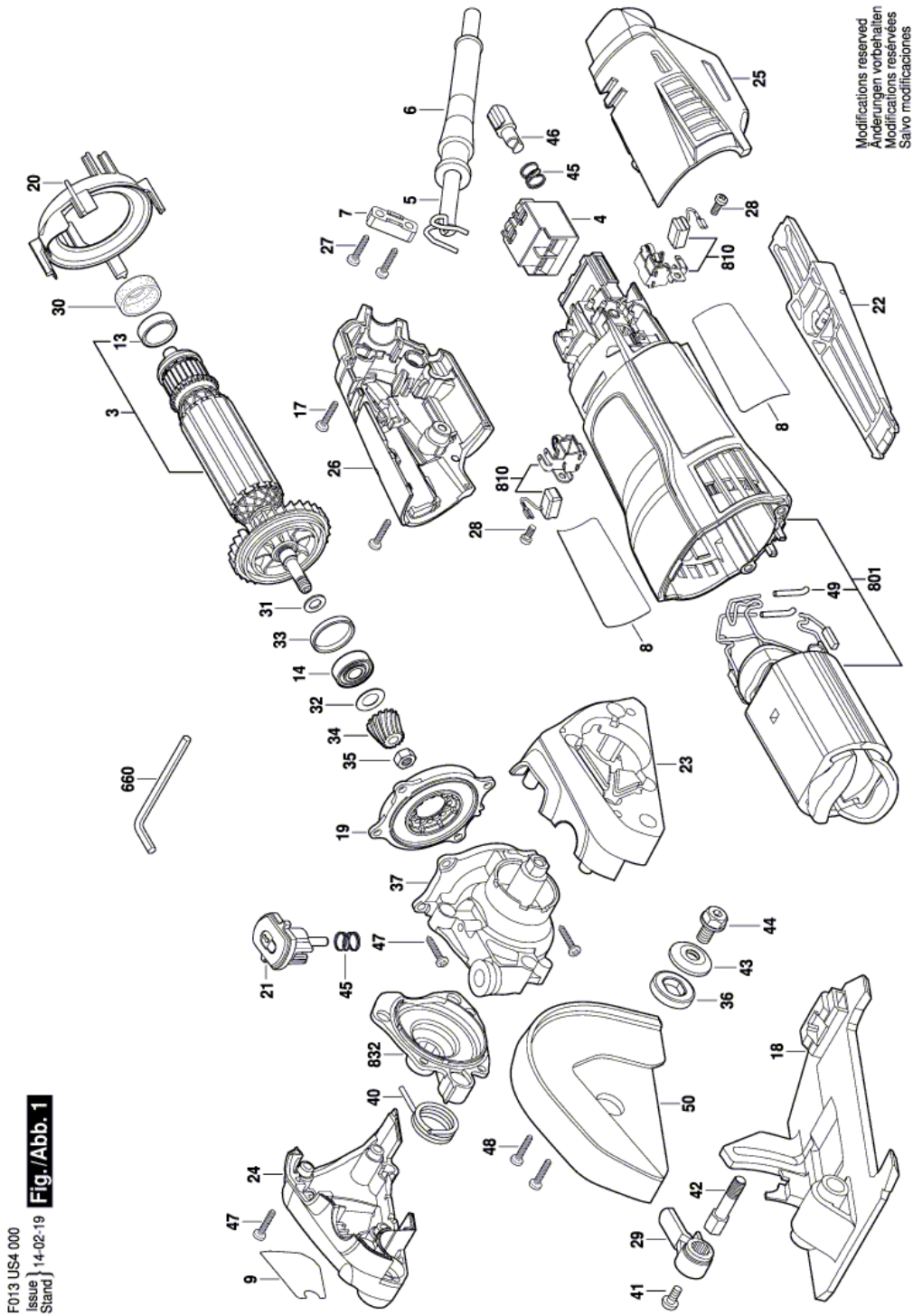


BOSCH

| Item | Part Number | Description | Illustration | Price | Quantity | Price Group |
|------|---------------|--|--------------|-------|----------|-------------|
| 3 | 2 610 015 927 | Armature assembly 127V | 1 | -,- | 1 | 34 |
| 4 | 1 607 200 146 | Switch | 1 | -,- | 1 | 22 |
| 5 | 2 604 460 122 | Power supply cord USA/CDN 2,15m 2 x 0,82mm SJ 18/2 | 1 | -,- | 1 | 28 |
| 6 | 2 610 016 369 | Cord guard | 1 | -,- | 1 | 11 |
| 7 | 2 601 035 001 | Cable Clip | 1 | -,- | 1 | 11 |
| 8 | 2 610 032 014 | Label | 1 | -,- | 1 | - |
| 9 | 2 610 032 017 | Warning Label | 1 | -,- | 1 | - |
| 13 | 1 619 P00 456 | Ball Bearing 7x19x6 MM | 1 | -,- | 1 | 14 |
| 14 | 1 619 P00 455 | Ball Bearing | 1 | -,- | 1 | 15 |
| 17 | 2 615 294 035 | Cross Recessed-Head Screw | 1 | -,- | 4 | 11 |
| 18 | 2 610 027 899 | Adjustable Foot | 1 | -,- | 1 | - |
| 19 | 2 610 027 889 | Baffle | 1 | -,- | 1 | - |
| 20 | 2 610 012 049 | Baffle | 1 | -,- | 1 | 12 |
| 21 | 2 610 027 894 | Push-Button Key | 1 | -,- | 1 | - |
| 22 | 2 610 015 923 | Switching Arm | 1 | -,- | 1 | 20 |
| 23 | 2 610 027 900 | Front Housing | 1 | -,- | 1 | - |
| 24 | 2 610 027 901 | Housing Cover | 1 | -,- | 1 | - |
| 25 | 2 610 027 897 | Housing Half | 1 | -,- | 1 | - |
| 26 | 2 610 027 898 | Housing Cover | 1 | -,- | 1 | - |
| 27 | 2 603 490 022 | Screw 4x16 | 1 | -,- | 2 | 10 |
| 28 | 1 619 P02 849 | Torx Oval-Head Screw 3x8 | 1 | -,- | 2 | 10 |
| 29 | 2 610 031 621 | Lever Foot | 1 | -,- | 1 | - |
| 30 | 1 600 502 023 | Intermediate Ring | 1 | -,- | 1 | 12 |
| 31 | 1 619 P00 987 | Washer | 1 | -,- | 1 | 10 |
| 32 | 1 600 100 033 | Cover Disc | 1 | -,- | 1 | 13 |
| 33 | 1 600 206 025 | Rubber Ring | 1 | -,- | 1 | 12 |
| 34 | 1 619 P02 825 | Bevel Gear | 1 | -,- | 1 | 17 |
| 35 | 2 915 011 007 | Hex Nut DIN 934-M6-8-A | 1 | -,- | 1 | 10 |
| 36 | 2 610 031 679 | Flange | 1 | -,- | 1 | - |
| 37 | 2 610 027 890 | Gear Housing | 1 | -,- | 1 | - |
| 40 | 2 610 027 895 | Torsion Spring | 1 | -,- | 1 | - |
| 41 | 2 610 004 796 | Screw | 1 | -,- | 1 | - |
| 42 | 2 610 031 622 | Lever Shaft | 1 | -,- | 1 | - |

| Item | Part Number | Description | Illustration | Price | Quantity | Price Group |
|------|---------------|---|--------------|-------|----------|-------------|
| 43 | 2 610 031 680 | Flange Plate | 1 | -,- | 1 | - |
| 44 | 2 610 016 801 | Collar bolt | 1 | -,- | 1 | 12 |
| 45 | 2 610 016 072 | Compression Spring | 1 | -,- | 2 | 11 |
| 46 | 2 610 012 055 | Locking Hook | 1 | -,- | 1 | 12 |
| 47 | 2 603 490 023 | Torx Oval-Head Screw 4x20 | 1 | -,- | 8 | 10 |
| 48 | 1 603 435 068 | Thread-forming tap. Screw DIN 7500, M4x10, SR10.2 | 1 | -,- | 6 | 11 |
| 49 | 1 619 P02 866 | Shrinkable Tube | 1 | -,- | 2 | 10 |
| 50 | 2 610 027 902 | Safety Guard | 1 | -,- | 1 | - |
| 660 | 2 610 937 464 | Hexagon Socket Wrench | 1 | -,- | 1 | 11 |
| 801 | 2 610 033 778 | Motor Housing | 1 | -,- | 1 | - |
| 810 | 2 610 013 288 | Carbon Brush | 1 | -,- | 2 | 25 |
| 832 | 2 610 033 779 | Bearing Flange | 1 | -,- | 1 | - |

Illustration - Type E



Information subject to change without further notice.