

**RYOBI**  
**7-1/2 in. Sliding Compound**  
**Miter Saw With LED**  
**Model No. TSS702**  
**Repair Sheet**

RYOBI 7-1/2 in. SLIDING COMPOUND MITER SAW – MODEL NO. TSS702

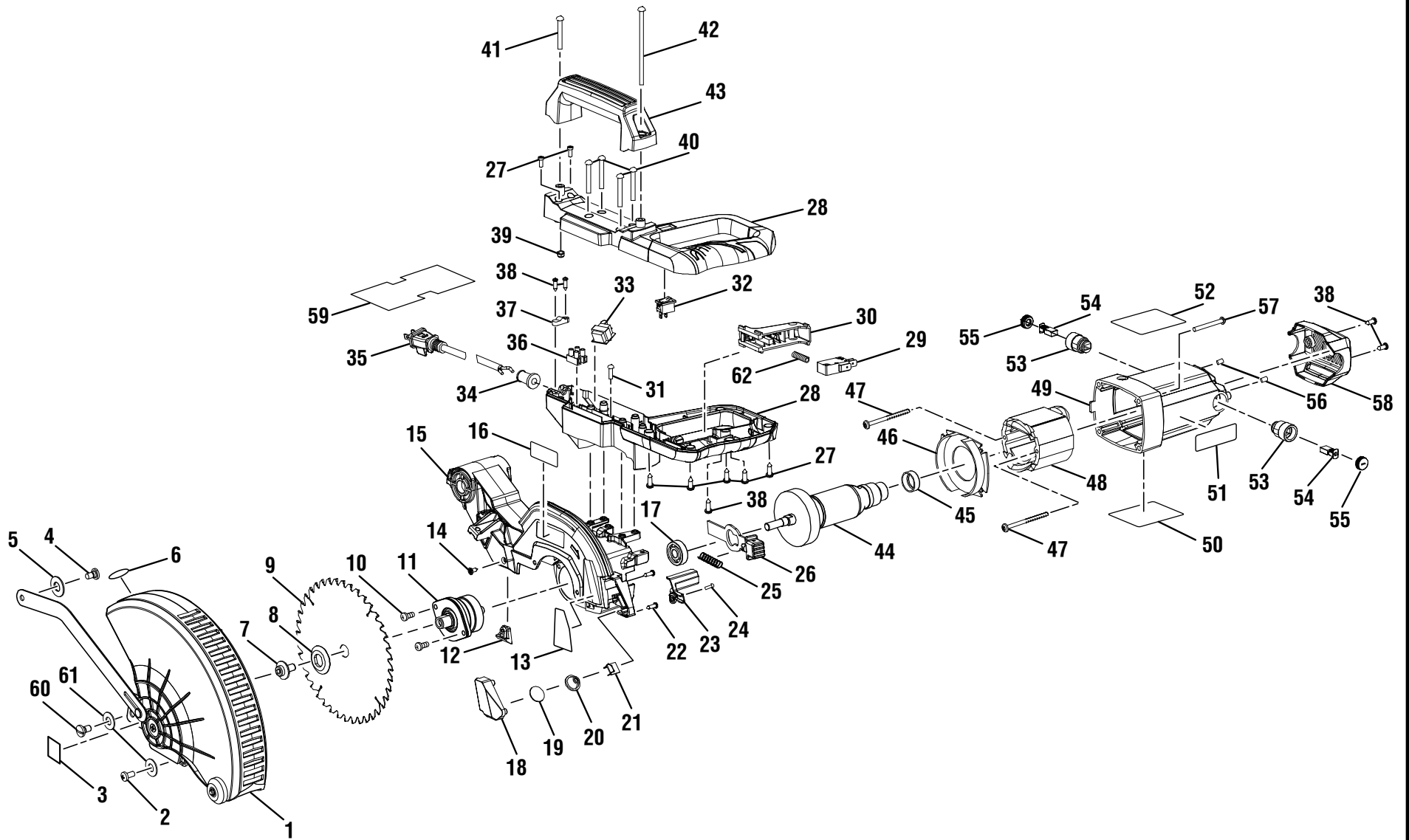


FIGURE A

## RYOBI 7-1/2 in. SLIDING COMPOUND MITER SAW – MODEL NO. TSS702

The model number will be found on a label attached to the housing. Always mention the model number in all correspondence regarding your **MITER SAW** or when ordering replacement parts.

### PARTS LIST – FIGURE A

KEY NO.	PART NUMBER	DESCRIPTION	QTY	KEY NO.	PART NUMBER	DESCRIPTION	QTY
1	089240034703	Lower Guard Assembly (Inc. Key Nos. 3 and 6) .....	1	34	089240011034	Bend Relief .....	1
2	089240034008	Screw (M5 x 10 mm) .....	1	35	089240011035	Power Cord .....	1
3	089240011905	Arbor Screw Warning Label .....	1	36	089240011047	Terminal Block .....	1
4	089240011029	Screw (M5 x 6 mm) .....	1	37	089240011036	Cord Clamp .....	1
5	089240011008	Spring Washer (M8) .....	1	38	089240011062	Screw (M4.2 x 13 mm) .....	5
6	089240034910	No Hands Label .....	1	39	089240011037	Lock Nut (M5) .....	1
7	089240034007	Blade Bolt (M8 x 16 mm) .....	1	40	089240011038	Screw (M5 x 35 mm) .....	4
8	089240011086	Blade Washer .....	1	41	089240011039	Screw (M5 x 30 mm) .....	1
9	089240011937	Blade .....	1	42	089240011041	Screw (M5 x 90 mm) .....	1
10	089240011080	Screw (M5 x 16 mm, Pan Hd.) .....	2	43	089240011040	Carry Handle .....	1
11	089240011709	Output Spindle Assembly .....	1	44	089240011707	Armature Assembly (Inc. Key No. 45) .....	1
12	089240011069	Lower Guard Stop .....	1	45	089240011054	Bearing Cover .....	1
13	089240011910	Screw Warning Label .....	1	46	089240011055	Baffle .....	1
14	089240011071	Screw (M4.2 x 10 mm) .....	1	47	089240011064	Screw (M4.2 x 70 mm) .....	2
15	089240034711	Upper Guard Assembly (Inc. Key Nos. 12-14 and 16-17) .....	1	48	089240011056	Field Assembly .....	1
16	089240011904	Logo Label (Upper Guard) .....	1	49	089240034709	Motor Housing Assembly (Incl. Key Nos. 50-53 and 56) .....	1
17	089240011050	Ball Bearing (6200-2RS) .....	1	50	089240034901	Data Label .....	1
18	089240034029	LED Cover .....	1	51	089240011903	Motor Housing Label .....	1
19	089240011073	Lens Cover .....	1	52	089240034909	Warning Label .....	1
20	089240011072	Lens .....	1	53	089240011059	Brush Holder .....	2
21	089240011070	LED .....	1	54	089240011058	Brush w/Spring .....	2
22	089240011068	Screw (M4.2 x 13 mm) .....	2	55	089240011057	Brush Cap .....	2
23	089240011067	Wire Passing Groove .....	1	56	089240011020	Screw (M5 x 6 mm) .....	2
24	089240011130	Screw (M4 x 8 mm) .....	1	57	089240011060	Screw (M5 x 45 mm) .....	4
25	089240011066	Compression Spring .....	1	58	089240011061	Motor End Cap .....	1
26	089240011706	Spindle Lock Button Assembly .....	1	59	089240034908	Cord Wrap Label .....	1
27	089240011049	Screw (M4.2 x 16 mm) .....	7	60	089240011023	Link Rivet .....	1
28	089240034702	Handle Assembly (Inc. Key Nos. 32 and 39) .....	1	61	089240011022	Washer (ID5.3 x OD15 x 1.2t) .....	2
29	089240034006	Switch .....	1	62	089240034005	Compression Spring .....	1
30	089240034716	Trigger Assembly .....	1	<b>NOT SHOWN</b>			
31	089240011104	Screw (M5 x 12 mm) .....	1	995000650	Operator's Manual (089240034914)		
32	089240011043	LED Switch .....	1	4-29-19			
33	089240011046	Transformer .....	1	(Rev:04)			

RYOBI 7-1/2 in. SLIDING COMPOUND MITER SAW – MODEL NO. TSS702

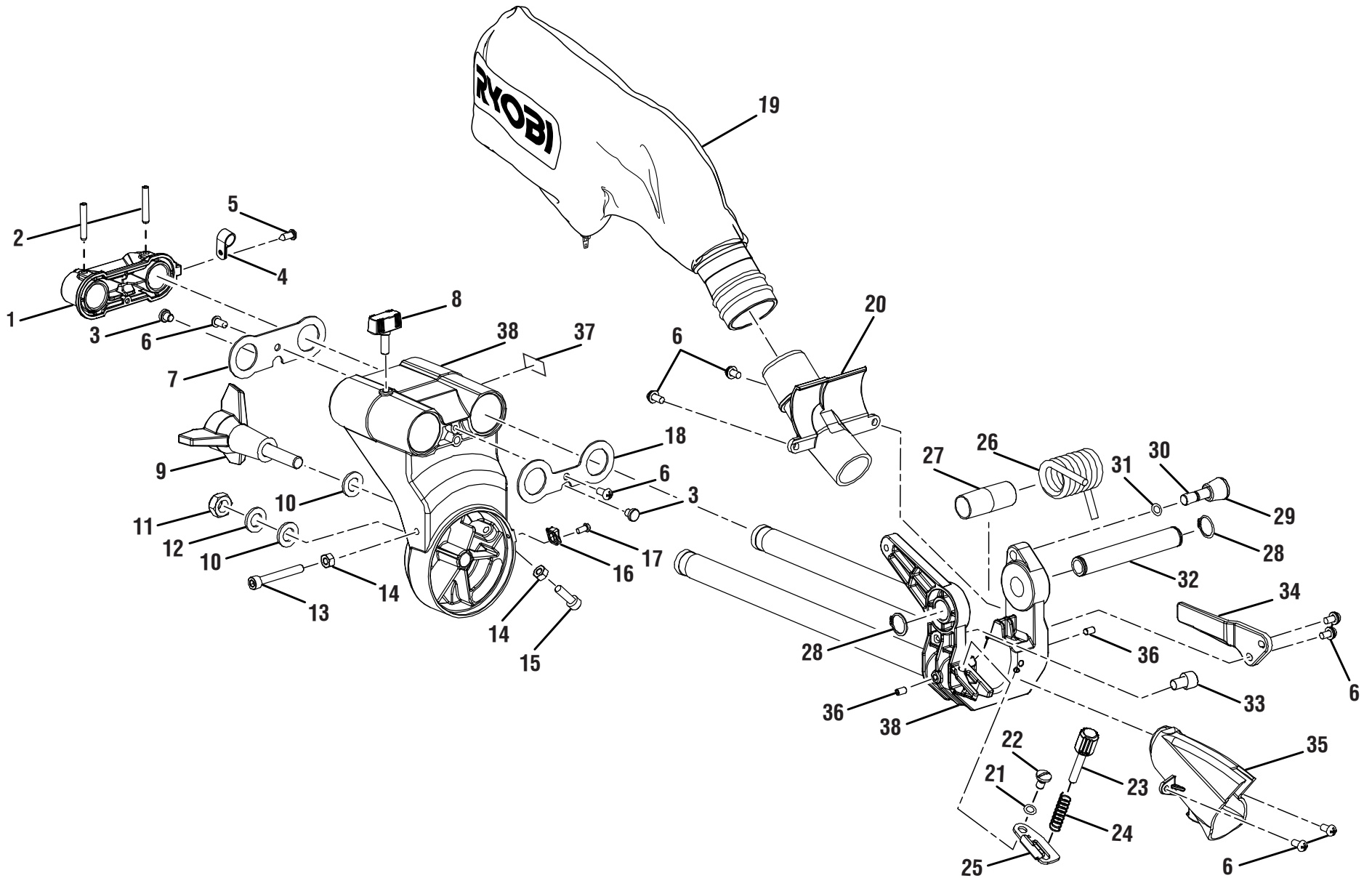


FIGURE B

## RYOBI 7-1/2 in. SLIDING COMPOUND MITER SAW – MODEL NO. TSS702

The model number will be found on a label attached to the housing. Always mention the model number in all correspondence regarding your **MITER SAW** or when ordering replacement parts.

### PARTS LIST – FIGURE B

KEY NO.	PART NUMBER	DESCRIPTION	QTY	KEY NO.	PART NUMBER	DESCRIPTION	QTY
1	089240011101	End Cap (Slider Shaft Cover) .....	1	21	089240011008	Washer (M8) .....	1
2	089240011102	Spring Pin (5 x 30) .....	2	22	089240011029	Screw .....	1
3	089240011100	Bumper Pad .....	2	23	089240011005	Depth Stop Knob.....	1
4	089240034021	Cord Clamp .....	1	24	089240011006	Compression Spring (Depth Stop Knob) .....	1
5	089240034022	Screw (M4 x 12 mm) .....	1	25	089240011007	Depth Stop Plate .....	1
6	089240011104	Screw (M5 x 12 mm).....	8	26	089240034027	Torsion Spring .....	1
7	089240011099	Cover .....	1	27	089240011010	Shaft Sleeve .....	1
8	089240011107	Lock Knob .....	1	28	089240011011	Retaining Ring .....	2
9	089240011098	Bevel Lock Knob .....	1	29	089240011013	Head Lock Button .....	1
10	089240011095	Washer (ID10 x OD20 x2t) .....	2	30	089240011014	Head Lock Pin .....	1
11	089240011097	Lock Nut (M10) .....	1	31	089240011015	O-Ring .....	1
12	089240011096	Washer (ID10 x OD18.8 x 1t) .....	1	32	089240011012	Pivot Shaft .....	1
13	089240011094	Screw (M6 x 40 mm) .....	1	33	089240011017	Screw (M8 x 12 mm).....	1
14	089240011093	Hex Nut (M6) .....	2	34	089240011016	Crown Finger.....	1
15	089240011110	Screw (M6 x 20 mm) .....	1	35	089240011018	Dust Chute .....	1
16	089240011109	Bevel Indicator.....	1	36	089240011020	Set Screw (M5 x 6 mm, Soc. Hd.).....	2
17	089240011130	Screw (M4 x 8 mm) .....	1	37	089240011912	Crown Base Arrow Label .....	1
18	089240011108	Cover .....	1	38	089240034706	Bevel Arm and Rail Assembly (Inc. Key Nos. 1-8, 13-18, 21-22, 25, 28-31 and 36-37).....	1
19	089240011703	Dust Bag Assembly.....	1				
20	089240011002	Dust Tube .....	1				

RYOBI 7-1/2 in. SLIDING COMPOUND MITER SAW – MODEL NO. TSS702

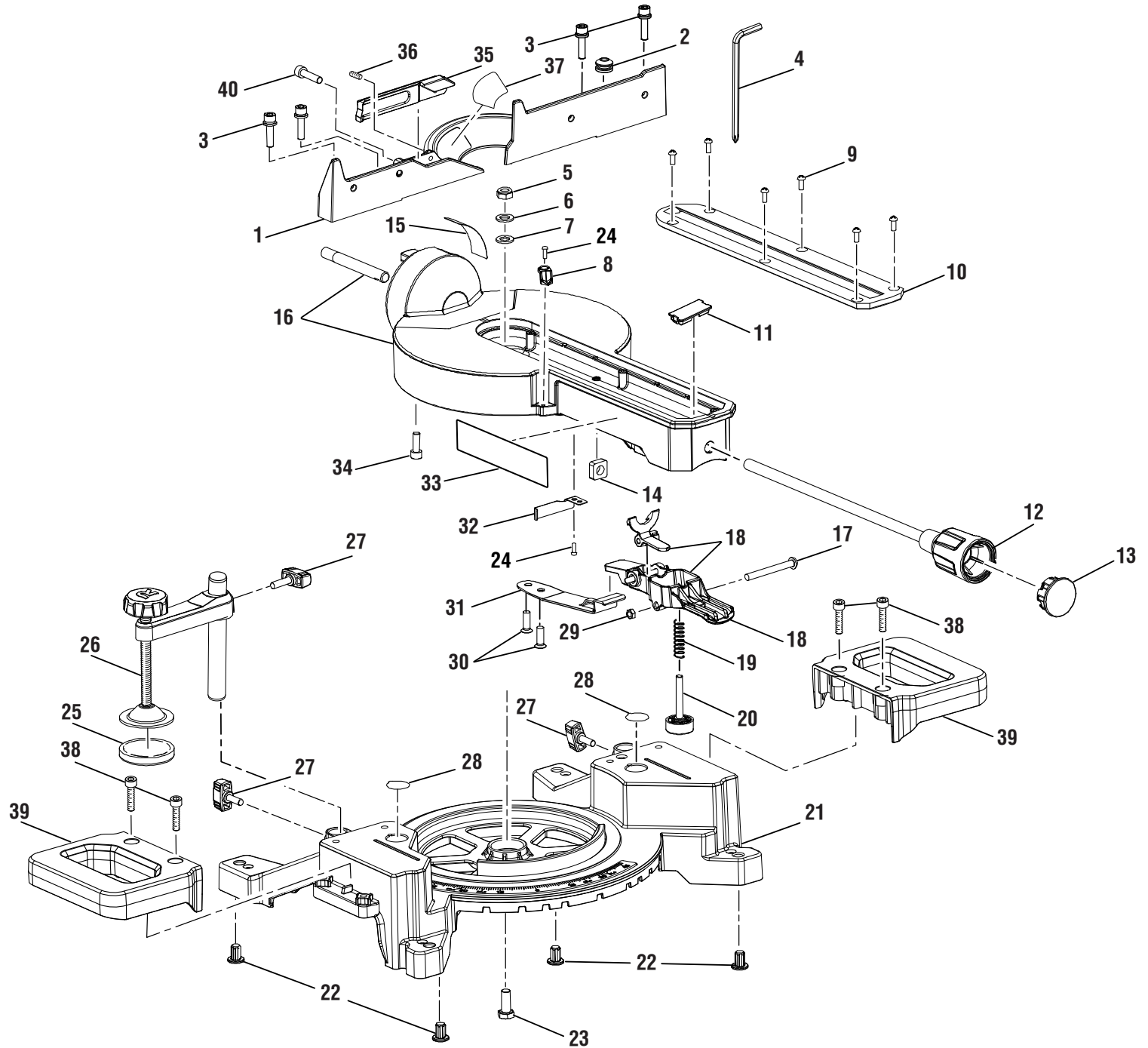


FIGURE C

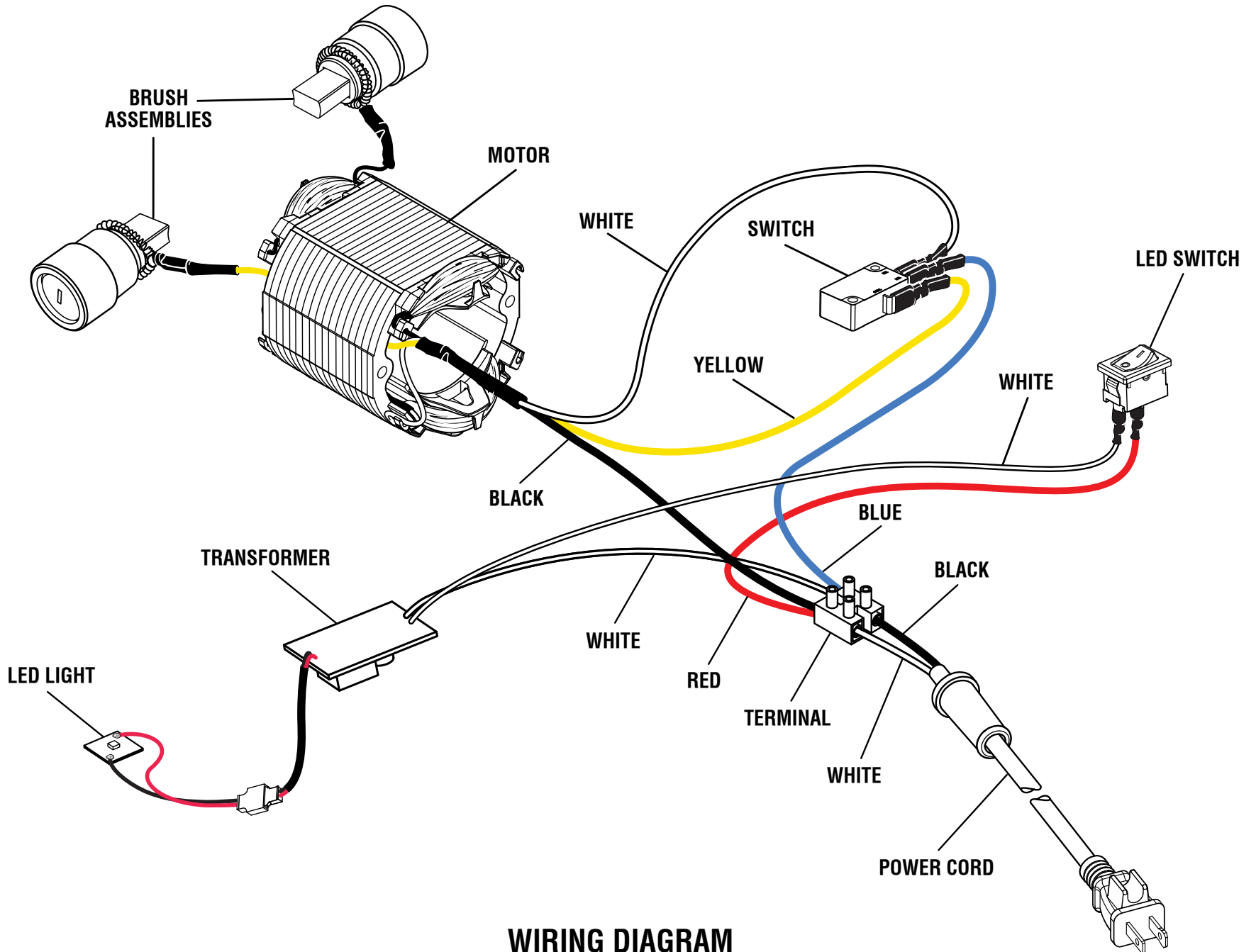
## RYOBI 7-1/2 in. SLIDING COMPOUND MITER SAW – MODEL NO. TSS702

The model number will be found on a label attached to the housing. Always mention the model number in all correspondence regarding your **MITER SAW** or when ordering replacement parts.

### PARTS LIST – FIGURE C

KEY NO.	PART NUMBER	DESCRIPTION	QTY	KEY NO.	PART NUMBER	DESCRIPTION	QTY
1	089240034010	Fixed Fence .....	1	21	089240034704	Base Assembly (Inc. Key Nos. 22 and 28) .....	1
2	089240011091	Wrench Holder .....	1	22	089240011140	Rubber Pad .....	4
3	089240011088	Screw (M6 x 25 mm) .....	4	23	089240011139	Bolt (M8 x 25 mm, Hex Hd.).....	1
4	089240011090	Blade Wrench (5 mm Hex Key) .....	1	24	089240011130	Screw (M4 x 8 mm) .....	2
5	089240011115	Lock Nut (M8).....	1	25	089240011927	Clamp Pad.....	1
6	089240011116	Washer (M8) .....	1	26	089240034713	Clamp Assembly (Inc. Key Nos. 25 and 27).....	1
7	089240011117	Washer (M8) .....	1	27	089240011107	Lock Knob .....	3
8	089240011118	Miter Indicator .....	1	28	089240034910	No Hands Label .....	2
9	089240011120	Screw (M4 x 8 mm).....	6	29	089240011133	Lock Nut (M6).....	1
10	089240011119	Throat Plate .....	1	30	089240011132	Screw (M6x16 mm) .....	2
11	089240011121	Cap .....	1	31	089240011131	Detent Spring Plate .....	1
12	089240034712	Miter Lock Handle Assembly (Inc. Key No. 13) .....	1	32	089240011129	Miter Lock Spacer.....	1
13	089240034031	Miter Lock Handle Cap .....	1	33	089240011913	Sliding Cut Direction Label .....	1
14	089240011128	Square Nut (M10) .....	1	34	089240011113	Screw (M6 x 16 mm).....	1
15	089240011902	Bevel Scale Label.....	1	35	089240034011	Sliding Fence.....	1
16	089240034710	Miter Table Assembly (Inc. Key Nos. 8, 11, 15, 24 and 32-34).....	1	36	089240034012	Set Screw (M6 x 10 mm, Soc. Hd.).....	1
17	089240011124	Screw .....	1	37	089240034902	Warning Label .....	1
18	089240011713	Miter Detent Release Lever Assembly.....	1	38	089240034013	Bolt (M6 x 25 mm) .....	4
19	089240011135	Compression Spring .....	1	39	089240034014	Side Handle.....	2
20	089240011136	Table Foot .....	1	40	089240034023	Thumb Screw (M6 x 16 mm) .....	1

RYOBI 7-1/2 in. SLIDING COMPOUND MITER SAW – MODEL NO. TSS702



WIRING DIAGRAM