

Ryobi
12 in. Sliding Compound
Miter Saw With Laser
Model No. TSS120L
Repair Sheet

ONE WORLD TECHNOLOGIES, INC.
P.O. Box 1288, Anderson, SC 29622 • Phone 1-800-525-2579
www.ryobitools.com

RYOBI 12 in. SLIDING COMPOUND MITER SAW – MODEL NO. TSS120L

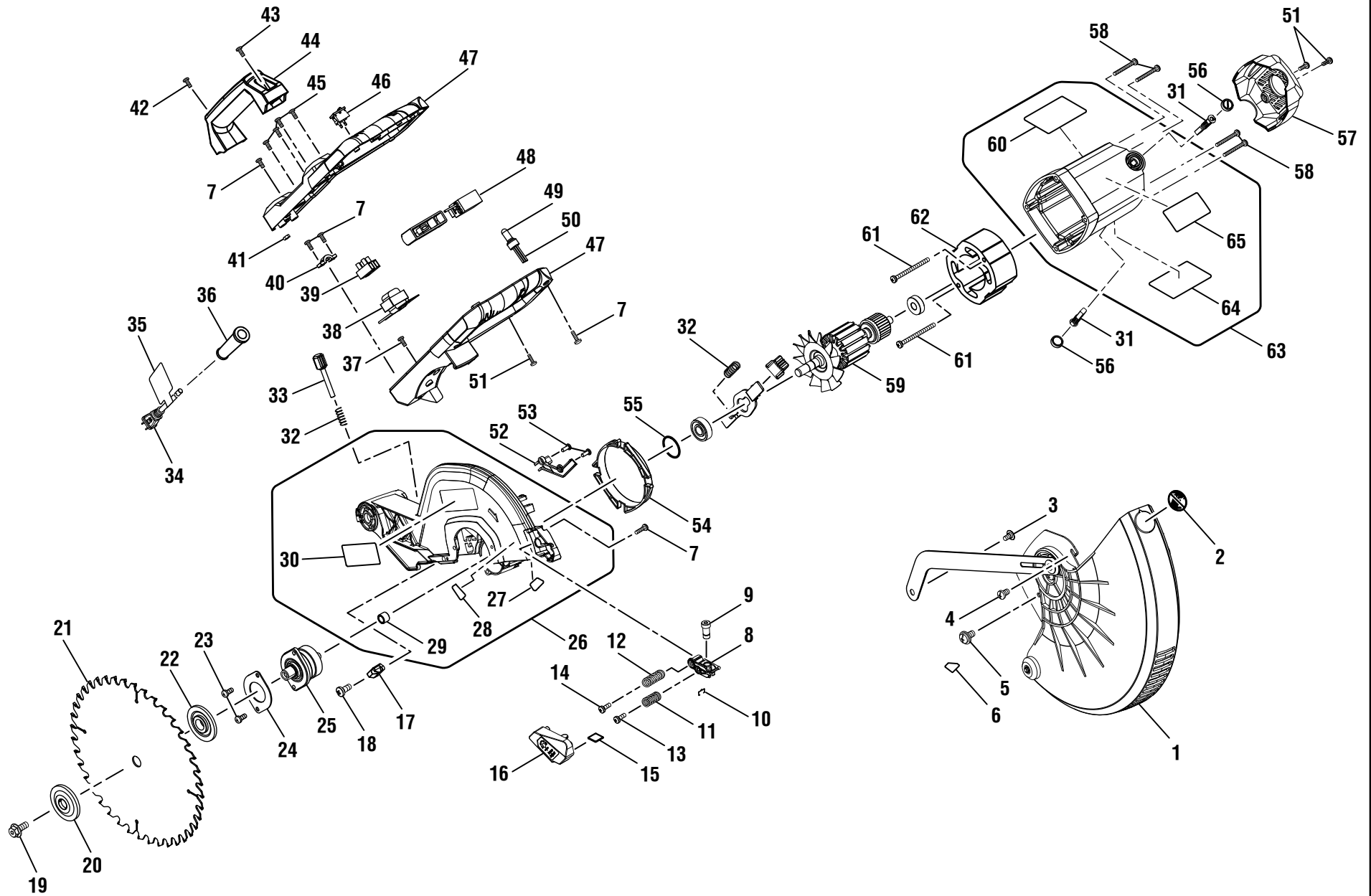


FIGURE A

RYOBI 12 in. SLIDING COMPOUND MITER SAW – MODEL NO. TSS120L

The model number will be found on a label attached to the housing. Always mention the model number in all correspondence regarding your **MITER SAW** or when ordering replacement parts.

PARTS LIST – FIGURE A

| KEY NO. | PART NUMBER | DESCRIPTION | QTY | KEY NO. | PART NUMBER | DESCRIPTION | QTY |
|---------|--------------|---|-----|---------|--------------|--|-----|
| 1 | 089041016704 | Lower Guard Assembly (Incl. Key No. 2) | 1 | 25 | 089041016711 | Arbor Assembly | 1 |
| 2 | 089100207097 | No Hands Label | 1 | 26 | 089041016712 | Upper Guard Assembly (Incl. Key Nos. 27-31)... | 1 |
| 3 | 089006017042 | Screw (M6, Special)..... | 1 | 27 | 089041016905 | Aperture Warning Label..... | 1 |
| 4 | 089006017040 | Screw (M5, Special)..... | 1 | 28 | 089041016906 | Lower Guard Warning Label..... | 1 |
| 5 | 089006017041 | Screw (M4 x 10 mm, Cheese Hd.)..... | 1 | 29 | 089006017105 | Needle Bearing | 1 |
| 6 | 089100207051 | Blade Screw Direction Label..... | 1 | 30 | 089041016904 | Logo Label (Upper Guard)..... | 1 |
| 7 | 089006017051 | Screw (M4 x 16 mm, Round Hd.) | 5 | 31 | 080016005121 | Brush | 2 |
| 8 | 089041013017 | Laser Deck..... | 1 | 32 | 080016005029 | Compression Spring..... | 2 |
| 9 | 089041016040 | Laser..... | 1 | 33 | 080016005090 | Adjusting Knob | 1 |
| 10 | 089041013016 | Laser Lock | 1 | 34 | 089041016043 | Power Cord Assembly (Incl. Key No. 35) | 1 |
| 11 | 080016005071 | Compression Spring..... | 1 | 35 | 080006014904 | Cord Wrap Warning Label | 1 |
| 12 | 080016005070 | Compression Spring..... | 1 | 36 | 080016005098 | Bend Relief | 1 |
| 13 | 089041013019 | Screw (M4 x 15 mm)..... | 1 | 37 | 080016005056 | Screw (M5 x 12 mm, Pan Hd.)..... | 1 |
| 14 | 089041013020 | Screw (M4 x 28 mm)..... | 1 | 38 | 080016005097 | Module..... | 1 |
| 15 | 080016005019 | Laser Deck..... | 1 | 39 | 089038001051 | Connector Deck..... | 1 |
| 16 | 080016005018 | Laser Cap | 1 | 40 | 089006017062 | Cord Clamp | 1 |
| 17 | 089006017117 | Blade Guard Block | 1 | 41 | 080016005100 | Hex Nut (M5)..... | 1 |
| 18 | 089006017015 | Screw (M4 x 12 mm, Pan Hd.)..... | 1 | 42 | 080016005104 | Screw (M5 x 25 mm, Pan Hd.)..... | 1 |
| 19 | 089041016013 | Arbor Screw (M10 x 20 mm)..... | 1 | 43 | 080016005103 | Screw (M5 x 90 mm, Pan Hd.)..... | 1 |
| 20 | 089006017043 | Outer Blade Washer | 1 | 44 | 080016005102 | Carry Handle..... | 1 |
| 21 | 089041016907 | Blade | 1 | 45 | 080016005105 | Screw w/Washer (M5 x 40 mm, Pan Hd.) | 4 |
| 22 | 089041016014 | Inner Blade Washer | 1 | 46 | 089006017056 | Laser Switch | 1 |
| 23 | 089006017107 | Screw (M5 x 20 mm, Pan Hd.)..... | 2 | 47 | 089041016716 | Lower Handle Assembly..... | 1 |
| 24 | 089041016035 | Arbor Cap | 1 | 48 | 080016005716 | Switch Assembly | 1 |

RYOBI 12 in. SLIDING COMPOUND MITER SAW – MODEL NO. TSS120L

The model number will be found on a label attached to the housing. Always mention the model number in all correspondence regarding your **MITER SAW** or when ordering replacement parts.

PARTS LIST – FIGURE A

| KEY NO. | PART NUMBER | DESCRIPTION | QTY | KEY NO. | PART NUMBER | DESCRIPTION | QTY |
|----------------|--------------------|---|------------|----------------|--------------------|--|------------|
| 49 | 089037007048 | Wire Connector..... | 1 | 60 | 080016005910 | Warning Label (English)..... | 1 |
| 50 | 080016005092 | Yellow Wire..... | 2 | 61 | 080016005082 | Screw w/Washer (M5 x 60 mm)..... | 2 |
| 51 | 089006017061 | Screw (M4 x 12 mm, Round Hd.)..... | 3 | 62 | 080016005083 | Field Assembly..... | 1 |
| 52 | 089041016042 | Laser Wire Cap..... | 1 | 63 | 089041016715 | Motor Housing Assembly (Incl. Key Nos. 60 and 64-65)..... | 1 |
| 53 | 080016005003 | Screw (M4 x 10mm, Pan Hd.)..... | 2 | 64 | 089041016901 | Data Label..... | 1 |
| 54 | 080016005076 | Baffle..... | 1 | 65 | 080016005908 | Logo Label..... | 1 |
| 55 | 089110102275 | O-Ring..... | 1 | | Not Shown: | | |
| 56 | 080016005088 | Brush Holder Cap..... | 2 | 991000199 | Owner's Manual | | |
| 57 | 080016005087 | End Cap..... | 1 | 9-28-18 | | | |
| 58 | 080016005086 | Screw w/Washer (M5 x 50 mm)..... | 4 | (Rev:06) | | | |
| 59 | 089041016713 | Armature Assembly (Incl. Key Nos. 56-58 and 60)..... | 1 | | | | |

RYOBI 12 in. SLIDING COMPOUND MITER SAW – MODEL NO. TSS120L

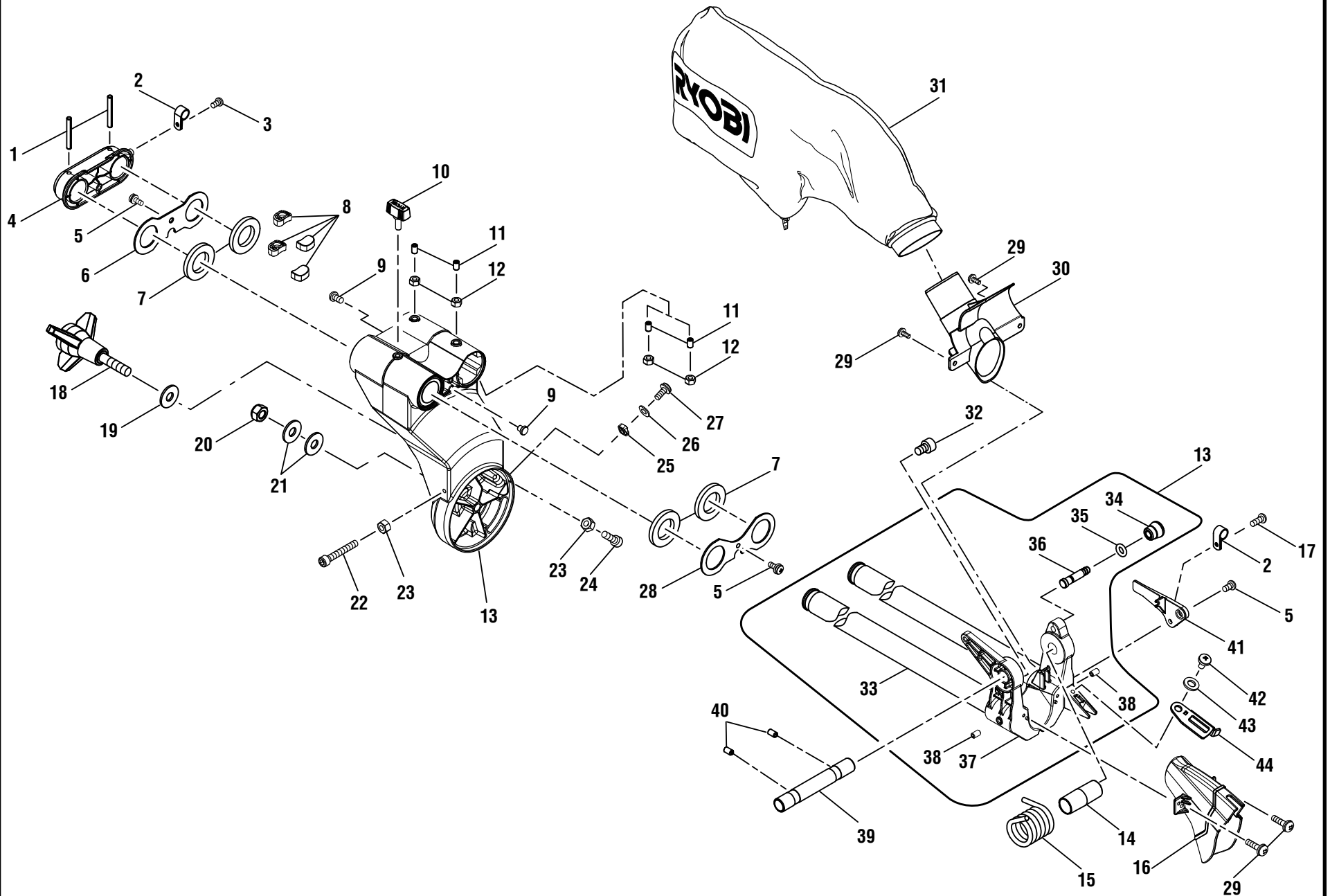


FIGURE B

RYOBI 12 in. SLIDING COMPOUND MITER SAW – MODEL NO. TSS120L

The model number will be found on a label attached to the housing. Always mention the model number in all correspondence regarding your **MITER SAW** or when ordering replacement parts.

PARTS LIST – FIGURE B

| KEY NO. | PART NUMBER | DESCRIPTION | QTY | KEY NO. | PART NUMBER | DESCRIPTION | QTY |
|----------------|--------------------|--|------------|----------------|--------------------|---------------------------------------|------------|
| 1 | 089041016034 | Spring Pin..... | 2 | 23 | 080016005059 | Hex Nut (M6)..... | 2 |
| 2 | 089110101081 | Cord Clamp..... | 2 | 24 | 089041016032 | Screw (M6 x 35 mm, Hex Soc. Hd.)..... | 1 |
| 3 | 080016005015 | Screw (M5 x 10 mm, Pan Hd.)..... | 1 | 25 | 080016005014 | Bevel Indicator..... | 1 |
| 4 | 089041016029 | Cap..... | 1 | 26 | 089006017066 | Washer (ID4 x OD8 x 1t)..... | 1 |
| 5 | 080016005056 | Screw (M5 x 12 mm, Pan Hd.)..... | 3 | 27 | 080016005013 | Screw (M4 x 6 mm, Pan Hd.)..... | 1 |
| 6 | 089041016030 | Rear Cap..... | 1 | 28 | 089041016033 | Front Cap..... | 1 |
| 7 | 089041016024 | Felt Washer..... | 4 | 29 | 089041016016 | Screw (M4 x 10 mm)..... | 4 |
| 8 | 089041016025 | Adjust Pad..... | 4 | 30 | 080016005010 | Dust Tube..... | 1 |
| 9 | 080016005048 | Bumper..... | 2 | 31 | 080016005706 | Dust Bag Assembly..... | 1 |
| 10 | 080016005038 | Miter Knob..... | 1 | 32 | 080016005009 | Screw (M8 x 10 mm, Hex Soc. Hd.)..... | 1 |
| 11 | 080016005054 | Set Screw (M8 x 20 mm)..... | 4 | 33 | 089041016022 | Tube..... | 2 |
| 12 | 080016005053 | Hex Nut (M8)..... | 4 | 34 | 080016005043 | Lock Pin Knob..... | 1 |
| 13 | 089041016702 | Sliding Bracket Assembly (Incl. Key Nos. 33-38)..... | 1 | 35 | 089006017027 | O Ring..... | 1 |
| 14 | 089041016009 | Pivot Spring Bushing..... | 1 | 36 | 089006017026 | Lock Pin..... | 1 |
| 15 | 089041016010 | Torsion Spring..... | 1 | 37 | 089041016023 | Bevel Pivot..... | 1 |
| 16 | 089041016008 | Dust Chute..... | 1 | 38 | 080016005045 | Screw (M6 x 8 mm)..... | 2 |
| 17 | 089006017052 | Screw (M5 x 15 mm, Pan Hd.)..... | 1 | 39 | 089041016011 | Spindle..... | 1 |
| 18 | 080016005016 | Bevel Lock Knob..... | 1 | 40 | 089041016012 | Screw (M5 x 8 mm)..... | 2 |
| 19 | 089006017035 | Washer (ID10 x OD26 x2t)..... | 1 | 41 | 089041016015 | Indicator..... | 1 |
| 20 | 080016005017 | Lock Nut (M10)..... | 1 | 42 | 089006017042 | Screw (M6, Special)..... | 1 |
| 21 | 080016005116 | Washer (ID10.2 x OD20 x 2t)..... | 2 | 43 | 080016005042 | Wavy Washer (ID8 x OD13 x 0.3t)..... | 1 |
| 22 | 089041016031 | Bolt (M6 x 55 mm, Hex Hd.)..... | 1 | 44 | 080016005041 | Adjusting Plate..... | 1 |

RYOBI 12 in. SLIDING COMPOUND MITER SAW – MODEL NO. TSS120L

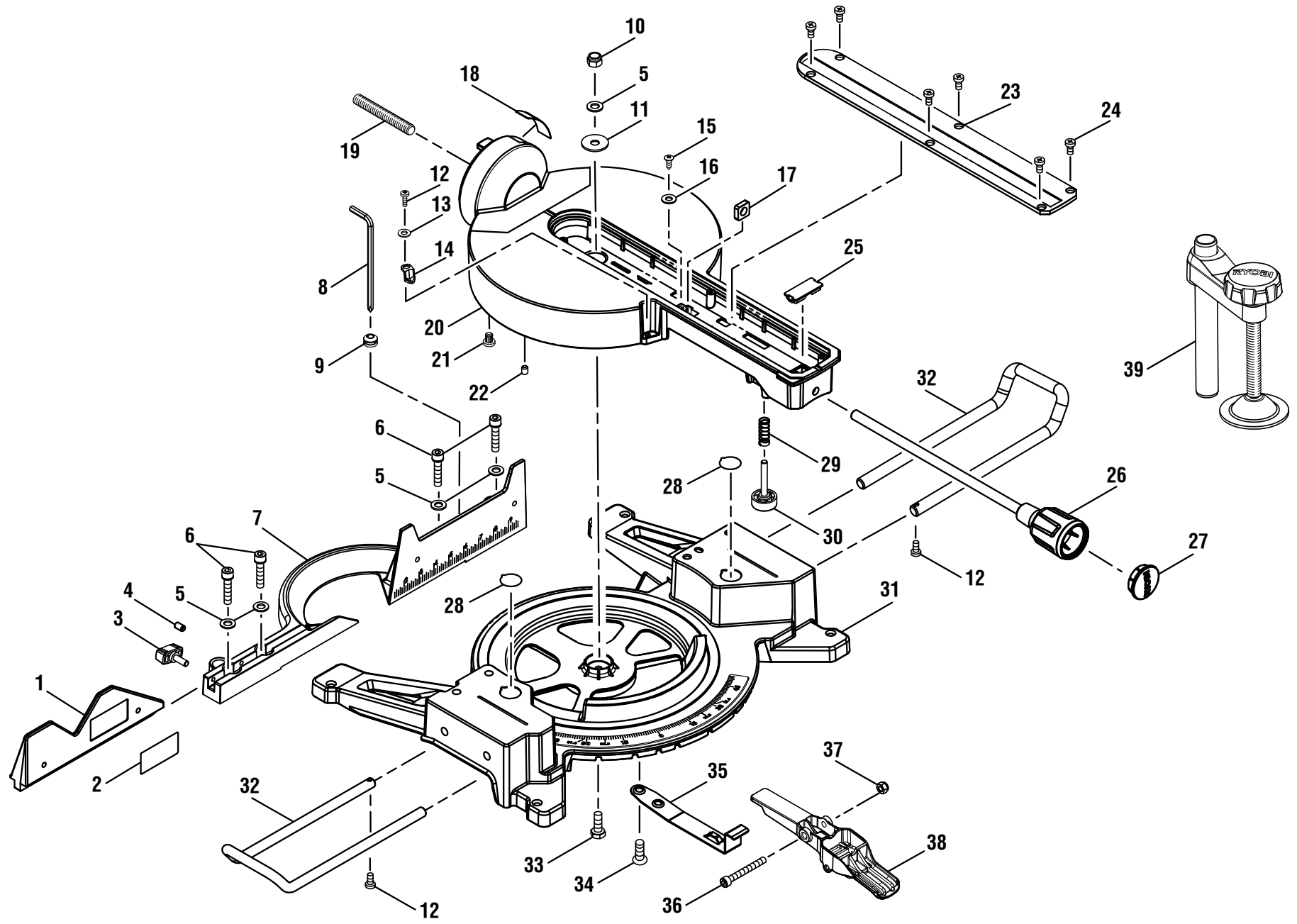


FIGURE C

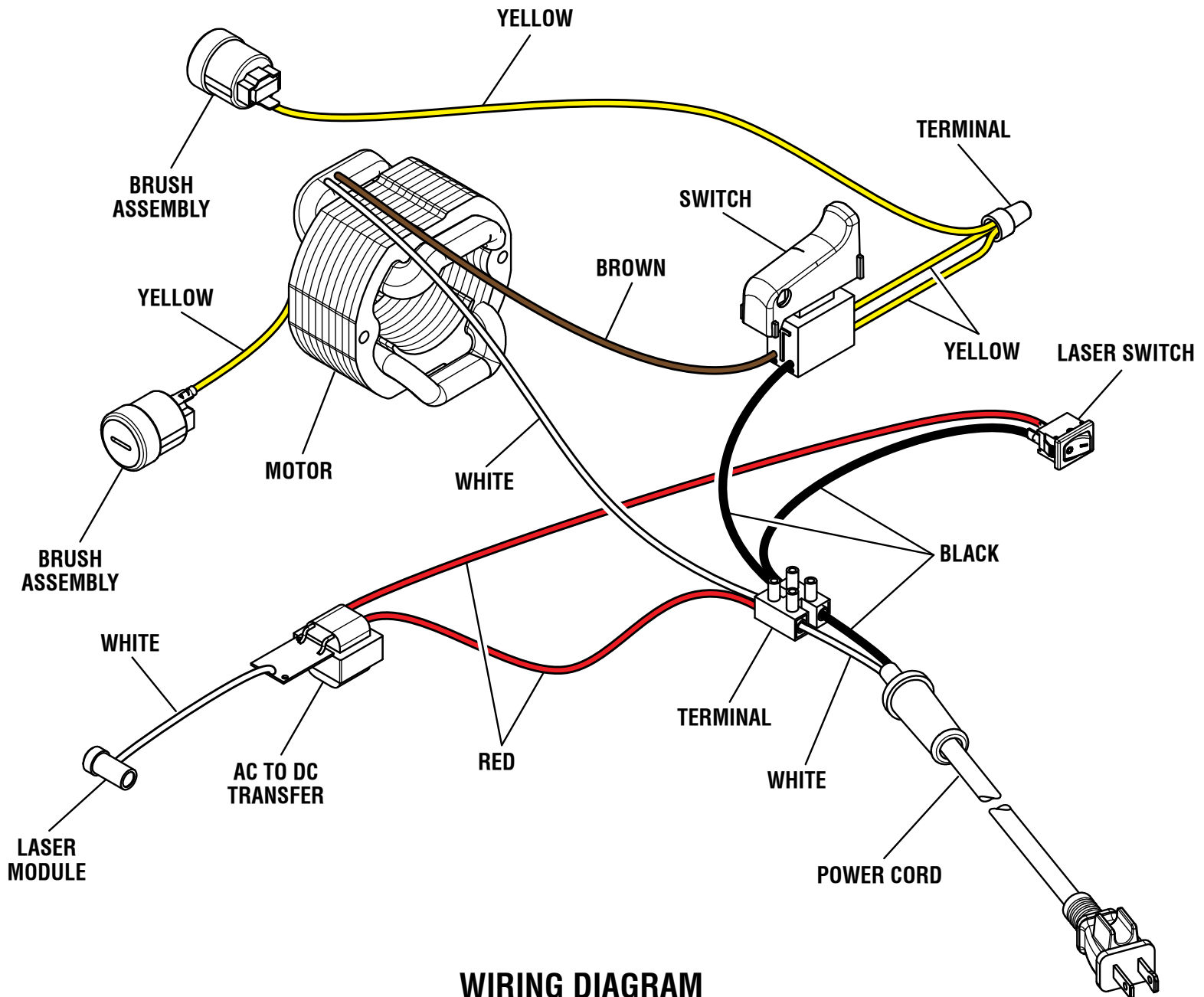
RYOBI 12 in. SLIDING COMPOUND MITER SAW – MODEL NO. TSS120L

The model number will be found on a label attached to the housing. Always mention the model number in all correspondence regarding your **MITER SAW** or when ordering replacement parts.

PARTS LIST – FIGURE C

| KEY NO. | PART NUMBER | DESCRIPTION | QTY | KEY NO. | PART NUMBER | DESCRIPTION | QTY |
|----------------|--------------------|---|------------|----------------|--------------------|--|------------|
| 1 | 089041016004 | Extension Fence Assembly (Incl. Key No. 2)..... | 1 | 21 | 080016005034 | Turring Pad | 10 |
| 2 | 089041016903 | Warning Label (Extension Fence)..... | 1 | 22 | 080016005114 | Screw (M6 x 8 mm) | 1 |
| 3 | 080016005038 | Miter Fence Knob..... | 1 | 23 | 089041016001 | Throat Plate | 1 |
| 4 | 089041016006 | Set Screw (M6 x 12 mm)..... | 1 | 24 | 080016005003 | Screw (M4 x 10 mm) | 6 |
| 5 | 089006017020 | Washer (ID8 x OD16 x 1.5t)..... | 4 | 25 | 080016005036 | Cap..... | 1 |
| 6 | 089041016002 | Screw w/Washer (M8 x 35 mm, Hex Soc. Hd.)..... | 4 | 26 | 089041016020 | Miter Lock Lever..... | 1 |
| 7 | 089041016003 | Fence..... | 1 | 27 | 080016005031 | Miter Lock Lever Cap..... | 1 |
| 8 | 089041016007 | Blade Wrench..... | 1 | 28 | 089100207097 | No Hands Label..... | 2 |
| 9 | 089006017008 | Blade Wrench Holder | 1 | 29 | 080016005029 | Spring | 1 |
| 10 | 089006017021 | Lock Nut (M8)..... | 1 | 30 | 080016005028 | Support Knob..... | 1 |
| 11 | 089006017071 | Washer (ID8.25 x OD21.9 x 1.5t)..... | 1 | 31 | 089041016706 | Base Assembly (Incl. Key No. 28) | 1 |
| 12 | 089006017015 | Screw (M4 x 12 mm) | 3 | 32 | 080016005001 | Extension Rod | 2 |
| 13 | 089006017066 | Washer (ID4 x OD8 x 1t)..... | 1 | 33 | 089006017007 | Screw (M8 x 20 mm, Hex Hd.) | 1 |
| 14 | 080016005037 | Miter Indicator | 1 | 34 | 089041016018 | Screw (M8 x 20mm, Hex Hd.) | 2 |
| 15 | 089041016016 | Screw (M4 x 10 mm) | 1 | 35 | 089041016019 | Positioning Spring | 1 |
| 16 | 089041016055 | Washer (ID4 x OD14 x 1t)..... | 1 | 36 | 080016005026 | Screw (M6 x 50 mm, Hex Soc. Hd.)..... | 1 |
| 17 | 080016005030 | Square Nut (M10) | 1 | 37 | 089006017081 | Lock Nut (M6)..... | 1 |
| 18 | 089041016902 | Bevel Scale..... | 1 | 38 | 080016005707 | Quick Positioning Assembly..... | 1 |
| 19 | 080016005035 | Bevel Bolt (M10 x 81.5 mm)..... | 1 | 39 | 089041016705 | Work Clamp Assembly | 1 |
| 20 | 089041016021 | Table | 1 | | | | |

RYOBI 12 in. SLIDING COMPOUND MITER SAW – MODEL NO. TSS120L



WIRING DIAGRAM