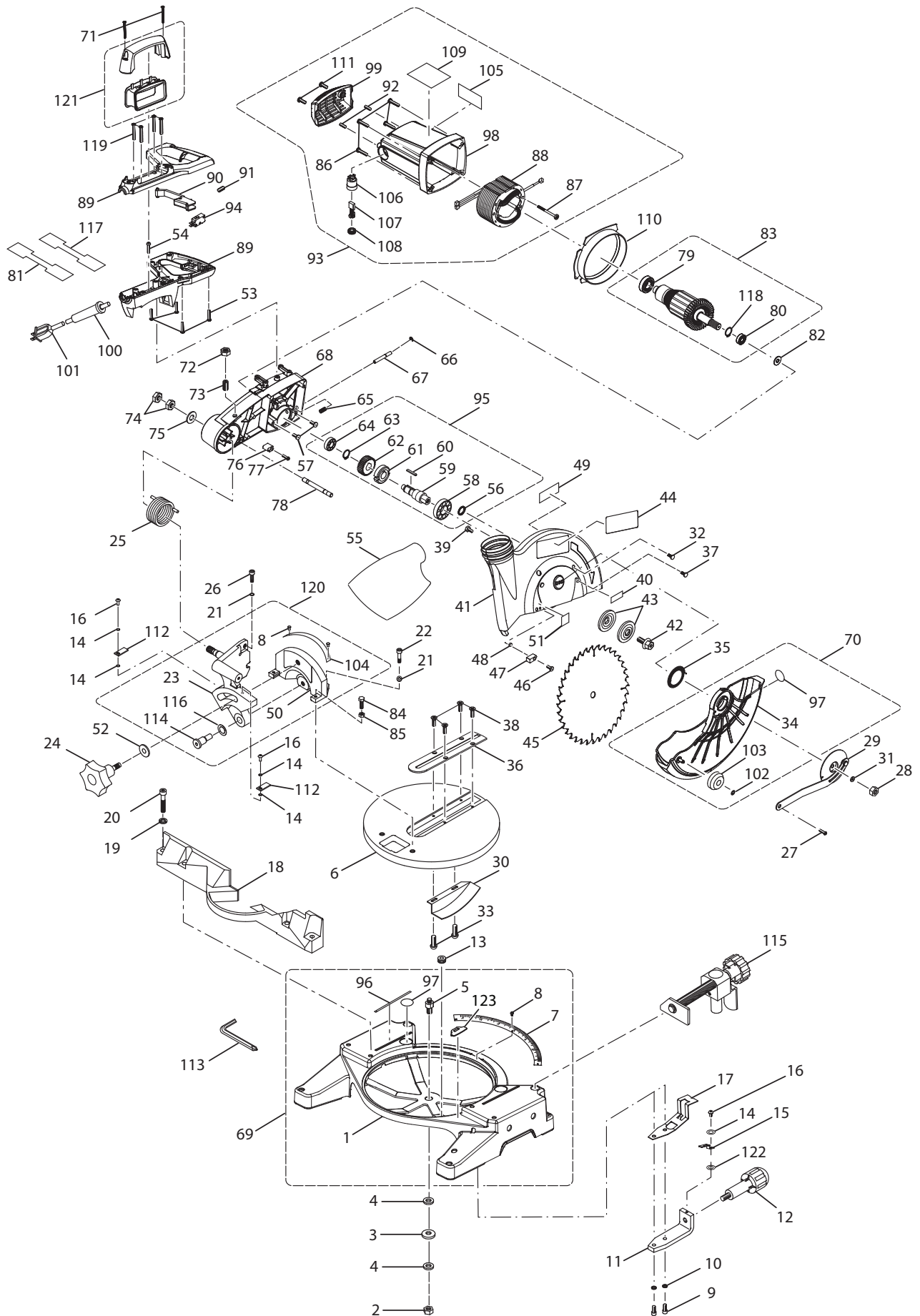


RYOBI 10 in. COMPOUND MITER SAW - MODEL NUMBER TS1342



RYOBI 10 in. COMPOUND MITER SAW – MODEL NUMBER TS1342

The model number will be found on a plate attached to the motor housing. Always mention the model number in all correspondence regarding your **MITER SAW** or when ordering repair parts.

PARTS LIST

KEY NO.	PART NUMBER	DESCRIPTION	QTY.
1	089100210001	BASE	1
2	A31703010008	* LOCK NUT (M10)	1
3	A36131020100	* SPRING WASHER (M10).....	1
4	A35031025153	* FLAT WASHER (M10)	2
5	518106300	TABLE SPINDLE.....	1
6	089100210032	TABLE.....	1
7	089100208010	MITER SCALE	1
8	A49010020056	RIVET (Ø2.5 X 5 mm).....	6
9	A07003060257	* CAP SCREW (M6 X 25 mm).....	2
10	A36030612157	* SPRING WASHER (M6)	2
11	518104200	CONTROL ARM	1
12	518103100	LOCK HANDLE	1
13	503118000	GROMMET	1
14	A35030410018	* FLAT WASHER (M4)	5
15	580114000	POINTER	1
16	A10003040107	* SCREW (M4 X 10 mm PAN HD.).....	3
17	518105400	LOCK PLATE	1
18	089100207018	FENCE.....	1
19	A36030814204	* SPRING WASHER (M8).....	4
20	A07103080457	* CAP SCREW (M8 X 45 mm).....	4
21	A36031018255	* SPRING WASHER (M10).....	3
22	A07003100256	* CAP SCREW (M10 X 25 mm).....	2
23	089100207023	SUPPORT BRACKET ASSEMBLY	1
24	089100207024	HANDLE	1
25	089100207025	TENSION SPRING.....	1
26	588058200	LOCK BOLT.....	1
27	589015108	SHOULDER SCREW	1
28	A31703006004	* LOCK NUT (M6)	1
29	089100207029	RETAINING SPRING HOLDER.....	1
30	089100208007	TABLE HOLD DOWN.....	1
31	A35010616105	* FLAT WASHER (M6)	1
32	A10003050106	* SCREW (M5 X 10 mm PAN HD.).....	4
33	A19003040093	* SCREW (M4 X 9 mm PAN HD.).....	2
34	089100207034	LOWER GUARD	1
35	589021300	RETRACT SPRING.....	1
36	089100207036	TABLE INSERT	1
37	A19001040091	* SCREW (M4 X 9 mm PAN HD.).....	1
38	A16003040083	* SCREW (M4 X 8 mm FLAT HD.).....	4
39	581410003	* SCREW	1
40	580411000	WARNING LABEL (UPPER GUARD).....	1
41	089100207710	UPPER SAFETY GUARD ASSEMBLY (INC. KEY NOS. 40 AND 51)	1
42	503412000	ARBOR BOLT	1
43	588035105	FLANGE	2

* Standard Hardware Item – May Be Purchased Locally

RYOBI 10 in. COMPOUND MITER SAW – MODEL NUMBER TS1342

The model number will be found on a plate attached to the motor housing. Always mention the model number in all correspondence regarding your **MITER SAW** or when ordering repair parts.

PARTS LIST

KEY NO.	PART NUMBER	DESCRIPTION	QTY.
44	089100207044	LOGO LABEL (UPPER GUARD).....	1
45	089100207045	BLADE.....	1
46	A10003040152	* SCREW (M4 X 15 mm PAN HD.).....	1
47	589032207	STOPPER.....	1
48	A31703004006	LOCK NUT (M4)	1
49	089100207900	DATA PLATE LABEL	1
50	089100207050	PIVOT SUPPORT	1
51	089100207051	WARNING LABEL	1
52	A35031030300	* FLAT WASHER (M10)	1
53	A70003040200	* SCREW (M4 X 20 mm PAN HD.).....	4
54	A10003050083	* SCREW (M5 X 8 mm PAN HD.).....	1
55	089100207055	DUST BAG	1
56	A63020000428	O-RING.....	1
57	588031004	* SCREW (M5 X 10 mm)	2
58	A50060040052	BALL BEARING (6004Z/RS).....	1
59	588030200	GEAR SHAFT	1
60	A45204040180	PARALLEL KEY	1
61	588029007	LOCK RING	1
62	588028300	GEAR	1
63	A46000150008	C-RING.....	1
64	A50060000027	BALL BEARING (6000ZZ).....	1
65	588027005	COMPRESSION SPRING.....	1
66	A47000040006	E-RING	1
67	588026106	SPINDLE LOCK PIN.....	1
68	089100207068	ARM	1
69	089100210700	BASE ASSEMBLY (INC. KEY NOS. 1, 5, 7, 8, 96, 97 & 123) ..	1
70	089100207702	LOWER GUARD ASSEMBLY (INC. KEY NOS. 34, 97, 102 AND 103)	1
71	089100207071	* SCREW (M4 X 45 mm PAN HD.).....	2
72	A30003010007	* HEX NUT (M10)	1
73	A18003100206	* FIXED SCREW (M10 X 20 mm)	1
74	A30003012194	* LOCK NUT (M12)	2
75	A36031226023	* FLAT WASHER (M12)	1
76	588021203	STOPPER.....	1
77	A90003040167	* SCREW (M4 X 16 mm PAN HD.).....	1
78	089100207706	STOP PIN ASSEMBLY	1
79	A50006080049	BALL BEARING (608).....	1
80	A50060020056	BALL BEARING (6002).....	1
81	588505000	HANG TAG (FR).....	1
82	A63020000320	O-RING.....	1
83	9053D01000	ARMATURE ASSEMBLY	1
84	578206000	* HEX BOLT (M6 X 16 mm)	2
85	A30003006003	* HEX NUT (M6)	2
86	A10003050300	SCREW (M5 X 30 mm PAN HD.).....	4

* Standard Hardware Item – May Be Purchased Locally

RYOBI 10 in. COMPOUND MITER SAW – MODEL NUMBER TS1342

The model number will be found on a plate attached to the motor housing. Always mention the model number in all correspondence regarding your **MITER SAW** or when ordering repair parts.

PARTS LIST

KEY NO.	PART NUMBER	DESCRIPTION	QTY.
87	A90101050603	SCREW (M5 X 60 L+S PAN HD.).....	2
88	089100207088	FIELD ASSEMBLY	1
89	089100207705	D-HANDLE ASSEMBLY (INC. KEY NO. 53)	1
90	089100207090	SWITCH ACTUATOR.....	1
91	511308000	COMPRESSION SPRING.....	1
92	A18003050054	* FIXED SCREW (M5 X 5 mm)	2
93	089100207704	MOTOR HOUSING ASSEMBLY (INC. KEY NOS. 86-88, 92, 98, 99, 105-109 AND 111)	1
94	580302000	SWITCH	1
95	089100207703	OUTPUT SPINDLE ASSEMBLY (INC. KEY NOS. 56 AND 58-64)	1
96	588071004	LINE WARNING LABEL.....	2
97	089100207097	WARNING LABEL (NO HAND)	3
98	089100207098	MOTOR HOUSING.....	1
99	089100207099	END CAP	1
100	588004100	BEND RELIEF	1
101	089100207101	POWER CORD	1
102	538417000	RETAINING RING	1
103	089100207103	ROLLER.....	1
104	089100207104	BEVEL SCALE	1
105	089100207105	LOGO LABEL (HOUSING).....	1
106	588007305	BRUSH HOLDER	2
107	089100207107	BRUSH ASSEMBLY	2
108	588005105	BRUSH CAP	2
109	089100207109	WARNING LABEL	1
110	089100207110	BAFFLE	1
111	A10003050150	* SCREW (M5 X 15 mm PAN HD.).....	2
112	089100207112	POINTER.....	2
113	089100207113	HEX KEY (M35 X 115 mm)	1
114	589010200	PIVOT SHAFT.....	1
115	518A08130	WORK CLAMP ASSEMBLY	1
116	589011308	WASHER	1
117	089100207117	HANG TAG LABEL (TIP OVER).....	1
118	A46000150008	C-RING.....	1
119	A10003050350	* SCREW (M5 X 35 mm PAN HD.).....	4
120	089100207708	PIVOT SUPPORT ASSEMBLY (INC. KEY NOS. 8, 23, 50, 104, 114 AND 116)	1
121	089100207709	CARRY HANDLE ASSEMBLY	1
122	A35030511158	FLAT WASHER (M5).....	1
123	089100210009	WEAR PAD	5
	983000942	OPERATOR'S MANUAL	
	04-10-08		
	(REV:06)		

* Standard Hardware Item – May Be Purchased Locally