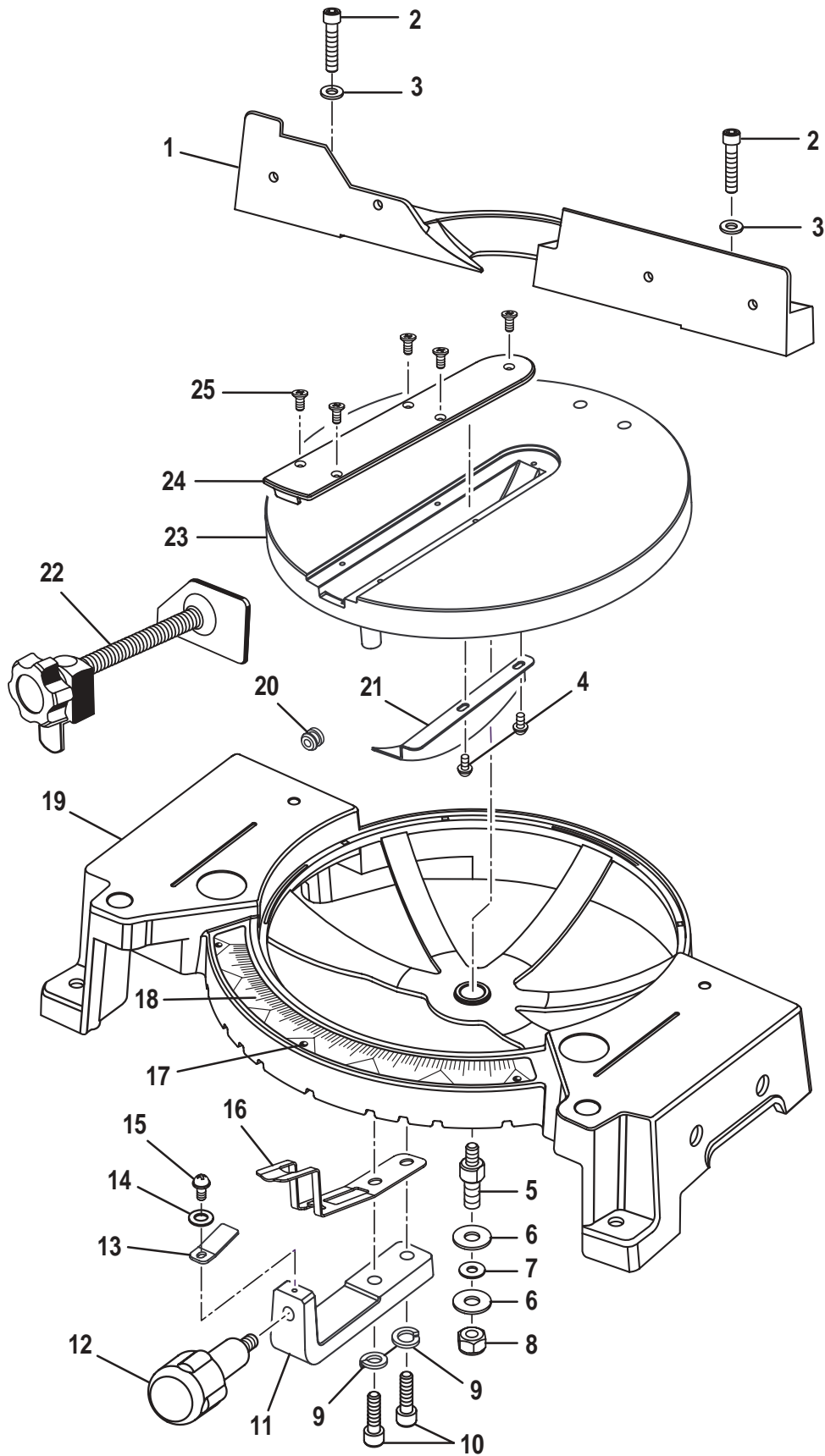


FIGURE A



RYOBI 10 in. (254 mm) COMPOUND MITER SAW – MODEL NO. TS1340

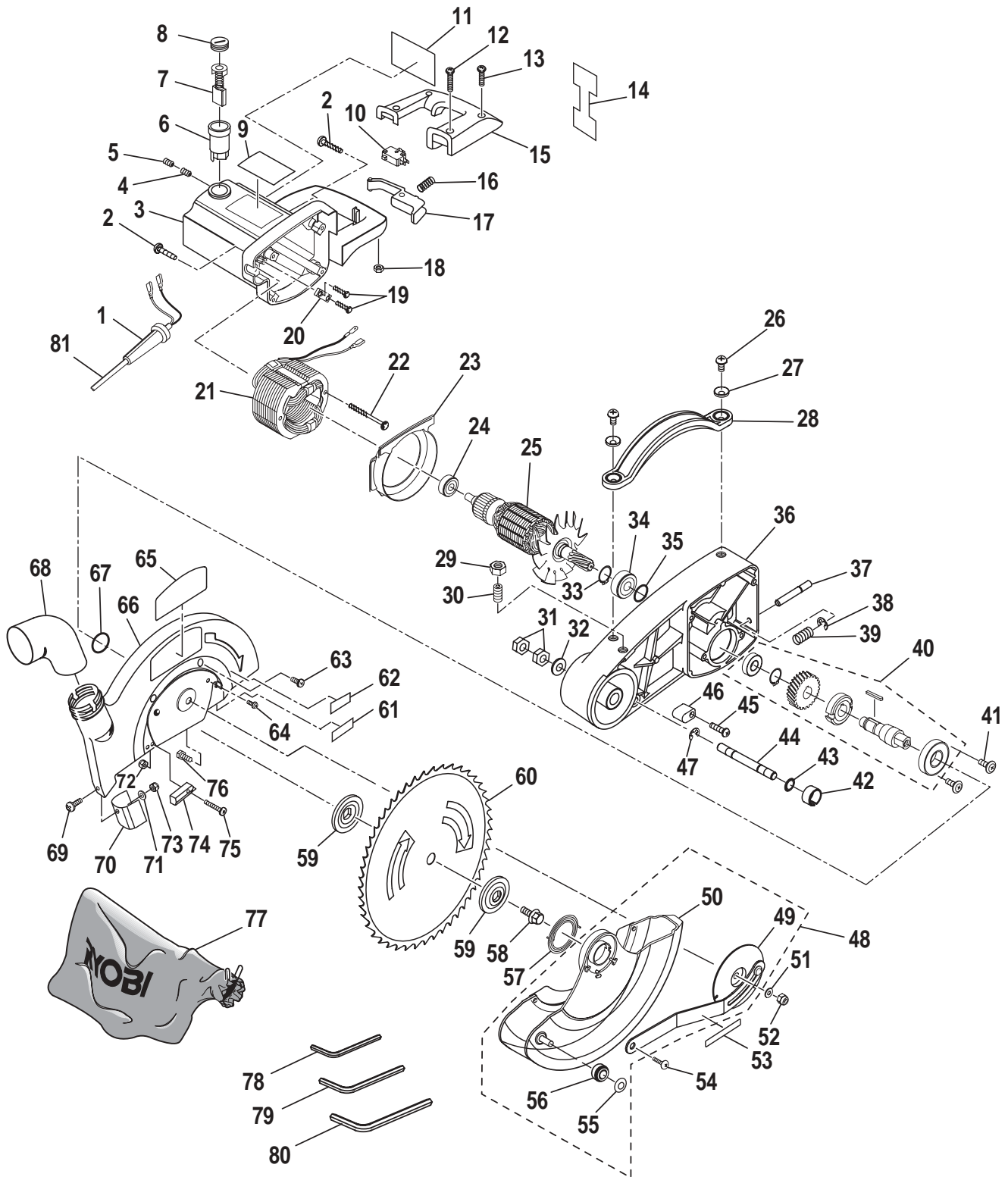
The model number will be found on a plate attached to the motor housing. Always mention the model number in all correspondence regarding your **Compound Miter Saw** or when ordering repair parts.

PARTS LIST - FIGURE A

Key No.	Part Number	Description	Qty.
	S58000500	BASE AND TABLE ASSEMBLY	
1	580118000	FENCE	1
2	A07103080457	* SOCKET HEAD CAP SCREW (M8 X 45 mm)	4
3	A36030814204	* SPRING WASHER (M8)	4
4	A19003040093	* PANCROSS SCREW (M4 X 9 mm)	2
5	518106300	TABLE SPINDLE	1
6	A35031025153	* FLAT WASHER (M10)	2
7	A36131020100	* SPRING WASHER (M10)	1
8	A31703010008	* SELF-LOCKING NUT (M10)	1
9	A36030612157	* SPRING WASHER (M6)	2
10	A07003060257	* SOCKET HEAD CAP SCREW (M6 X 25 mm)	2
11	518104200	CONTROL ARM	1
12	518103100	LOCK HANDLE	1
13	580114000	POINTER	1
14	A35030410018	* FLAT WASHER (M4)	1
15	A10003040107	* PANCROSS SCREW (M4 X 10 mm)	1
16	518105400	LOCK PLATE	1
17	A49001020056	RIVET	3
18	580119000	MITER SCALE	1
19	580117000	BASE	1
20	580120000	FIXED CAP	1
21	511104000	TABLE HOLD DOWN	1
22	518A08130	WISE CLAMP ASSEMBLY	1
23	512106000	TABLE	1
24	589027202	TABLE INSERT	1
25	A16003040083	* SCREW (M4 X 8 mm)	4

* Standard Hardware Item — May Be Purchased Locally

FIGURE B



RYOBI 10 in. (254 mm) COMPOUND MITER SAW – MODEL NO. TS1340

The model number will be found on a plate attached to the motor housing. Always mention the model number in all correspondence regarding your **Compound Miter Saw** or when ordering repair parts.

PARTS LIST - FIGURE B

Key No.	Part Number	Description	Qty.
	S58000600	MOTOR ASSEMBLY	
1	588004100	CORD HOLDER	1
2	A19003050302	* PANCROSS SCREW (M5 X 30 mm)	4
3	580309000	MOTOR HOUSING	1
4	A18003050054	* FIXED SCREW (M5 X 5 mm)	2
5	A95001050060	* FIXED SCREW (M5 X 6 mm)	2
6	528312100	BRUSH HOLDER	2
7	588006100	CARBON BRUSH	2
8	528311004	BRUSH CAP	2
9	580317000	WARNING LABEL	1
10	580302000	SWITCH	1
11	580316000	WARNING LABEL	1
12	A10003040307	* PANCROSS SCREW (M4 X 30 mm)	2
13	A10003040250	* PANCROSS SCREW (M4 X 25 mm)	2
14	580318000	HANG TAG LABEL	1
15	580311000	HANDLE COVER	1
16	580313000	SPRING	1
17	580312000	SAFETY BUCKLE	1
18	A30003004005	* HEX NUT (M4)	4
19	A90003040125	* PANCROSS SCREW (M4 X 12 mm)	2
20	578313006	CORD CLAMP	1
21	9053N02000	FIELD ASSEMBLY	1
22	A90101050603	* PANCROSS SCREW (M5 X 60 mm)	2
23	580314000	FAN CASING	1
24	A50006080049	BEARING	1
25	9053C01000	ARMATURE ASSEMBLY (INCLUDES KEY NOS. 24, 33, 34)	1
26	A17003060126	* CROSS SCREW (M6 X 12 mm)	2
27	588025003	WASHER	2
28	588024007	CARRY HANDLE	1
29	A30003010007	* HEX NUT (M10)	1
30	A18003100206	* FIXED SCREW (M10 X 20 mm)	1
31	A30003012194	* HEX NUT (M12)	2
32	A36031226023	* FLAT WASHER (M12)	1
33	A46000150008	C-RING	1
34	A50060020056	BEARING	1
35	A63020000320	O-RING	1
36	586004800	ARM	1
37	588026106	SPINDLE LOCK PIN	1
38	A47000040006	E-RING	1
39	588027005	COMPRESSION SPRING	1
40	588A05043	ARBOR ASSEMBLY	1
41	588031004	* SPECIAL SCREW (M5 X 10 mm)	2

* Standard Hardware Item — May Be Purchased Locally

RYOBI 10 in. (254 mm) COMPOUND MITER SAW – MODEL NO. TS1340

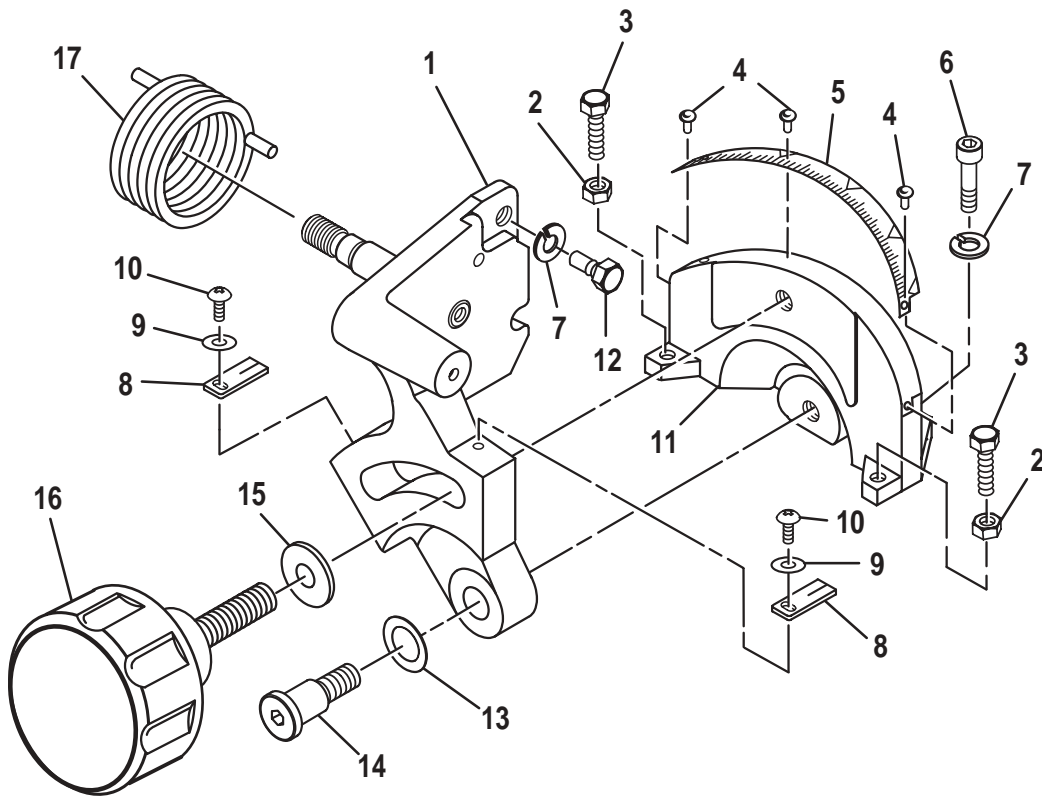
The model number will be found on a plate attached to the motor housing. Always mention the model number in all correspondence regarding your **Compound Miter Saw** or when ordering repair parts.

PARTS LIST - FIGURE B CONTINUED

Key No.	Part Number	Description	Qty.
42	588023001	STOP PIN CAP	1
43	A63000000051	O-RING	1
44	588022300	STOP PIN	1
45	A90003040167	* PANCROSS SCREW (M4 X 16 mm)	1
46	588021203	RUBBER SLEEVE	1
47	A47000060002	E-RING	1
48	S58000700	LOWER GUARD ASSEMBLY	1
49	S58000300	RETAINING SPRING HOLDER	1
50	580407000	LOWER GUARD	1
51	A35010616105	* FLAT WASHER (M6)	1
52	A31703006004	* SELF-LOCKING NUT (M6)	1
53	976740-001	LABEL	1
54	589015108	SHOULDER SCREW	1
55	538417000	RETAINING RING	1
56	566407000	ROLLER	1
57	589021300	RETRACT SPRING	1
58	580412000	HEX WASHER HEAD SCREW	1
59	588035105	FLANGE	2
60	580513000	BLADE	1
61	580315000	MOTOR LABEL	1
62	580411000	COVER LABEL	1
63	A10003050106	* PANCROSS SCREW (M5 X 10 mm)	4
64	A19001040091	* PANCROSS SCREW (M4 X 9 mm)	1
65	580410000	LOGO PLATE	1
66	S58000400	UPPER GUARD ASSEMBLY	1
67	A63020000428	O-RING	1
68	595026002	ELBOW	1
69	A10003050105	* PANCROSS SCREW (M5 X 10 mm)	1
70	589034005	DEFLECTOR	1
71	A35030519105	* FLAT WASHER (M5)	1
72	A31703004006	* SELF-LOCKING NUT (M4)	1
73	A31703005005	* SELF-LOCKING NUT (M5)	1
74	589032207	STOPPER	1
75	A10003040152	* PANCROSS SCREW (M4 X 15 mm)	1
76	581410003	SCREW	1
77	580514000	DUST BAG	1
78	A07910520000	* ALLEN WRENCH (5 mm)	1
79	A07810622000	* ALLEN WRENCH (6 mm)	1
80	A07910820000	* ALLEN WRENCH (8 mm)	1
81	580310000	CORD ASSEMBLY	1

* Standard Hardware Item — May Be Purchased Locally

FIGURE C



RYOBI 10 in. (254 mm) COMPOUND MITER SAW – MODEL NO. TS1340

The model number will be found on a plate attached to the motor housing. Always mention the model number in all correspondence regarding your **Compound Miter Saw** or when ordering repair parts.

PARTS LIST - FIGURE C

Key No.	Part Number	Description	Qty.
1	511D04020	SUPPORT BRACKET ASSEMBLY	1
2	A30003006003	* HEX NUT (M6)	2
3	578206000	* HEX BOLT (M6 X 16 mm)	2
4	A49001020056	RIVET	3
5	580202000	BEVEL SCALE	1
6	A07003100256	* SOCKET HEAD CAP SCREW (M10 X 25 mm)	2
7	A36031018255	* SPRING WASHER (M10)	3
8	578203007	POINTER	2
9	A35030410018	* FLAT WASHER (M4)	2
10	A10003040107	* PANCROSS SCREW (M4 X 10 mm)	2
11	578205106	PIVOT SUPPORT	1
12	588058103	LOCKBOLT	1
13	589011308	WASHER	1
14	589010200	PIVOT SHAFT	1
15	A35031025153	* FLAT WASHER (M10)	1
16	589012100	HANDLE	1
17	580319000	TENSION SPRING	1
	983000-248	OPERATOR'S MANUAL	
	983000-248R	REPAIR SHEET	
	1-16-04		

* Standard Hardware Item — May Be Purchased Locally