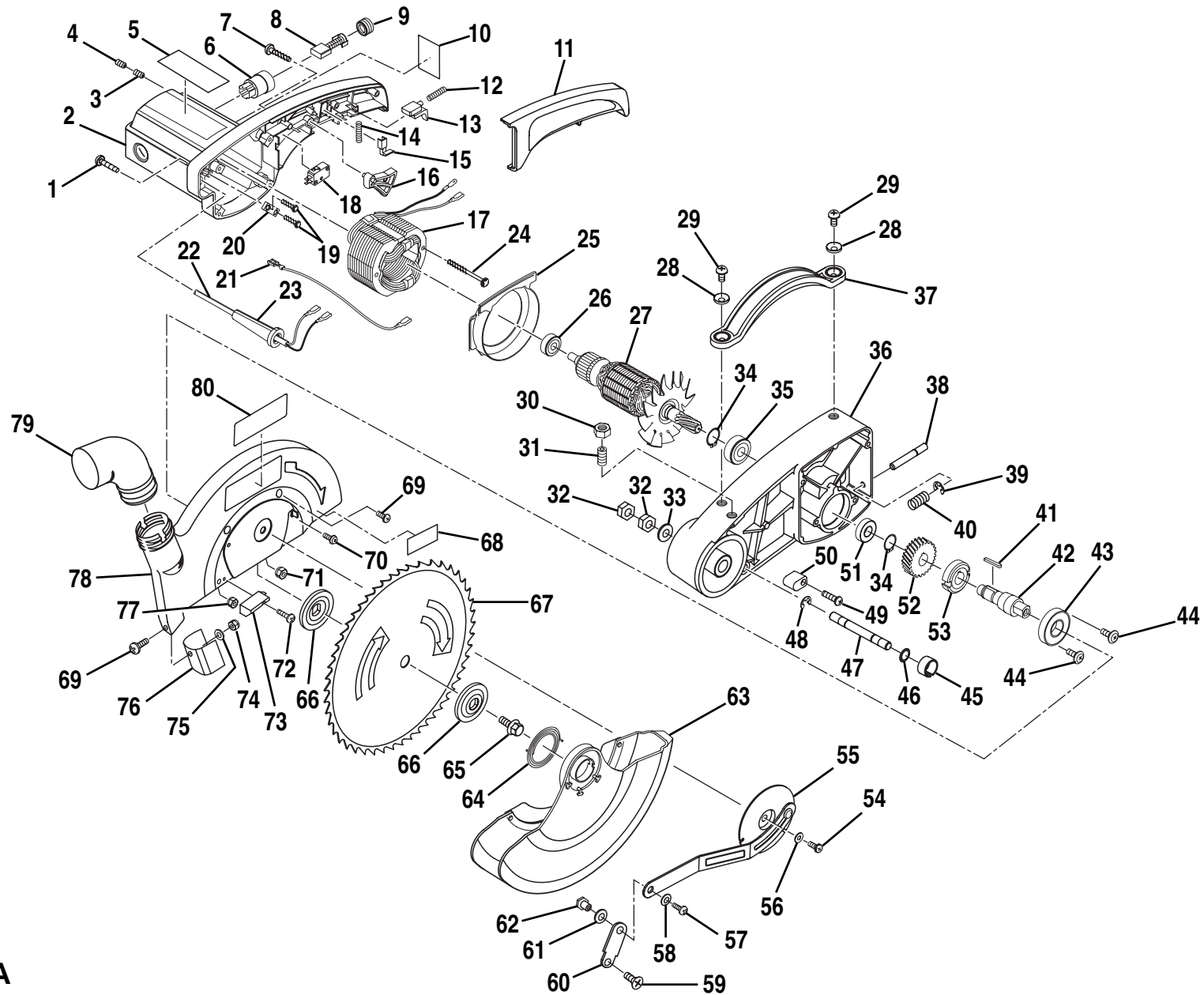


# RYOBI 10 in. (254 mm) MITER SAW – MODEL NUMBER TS1300



**FIGURE A**

**WARNING:** Improper repair of a double insulated tool can result in damages to the double insulation system possibly causing electrical shock or electrocution. Any repairs requiring disassembly of your tool requires safety testing and should only be performed by a Ryobi Authorized Service Center. For the repair center nearest you call 1-800-525-2579 in the United States or 1-800-265-6778 in Canada.

## RYOBI 10 in. (254 mm) MITER SAW – MODEL NUMBER TS1300

The model number will be found on a plate attached to the motor housing. Always mention the model number in all correspondence regarding your **MITER SAW** or when ordering repair parts.

### FIGURE A PARTS LIST

Key No.	Part Number	Description	Quan.	Key No.	Part Number	Description	Quan.
1	800130-502	Screw .....	4	41	452040-401	Square Key (4 x 4 x 28) .....	1
2	588002-005	Motor Housing .....	1	42	588030-008	Gear Shaft .....	1
3	981315-001	Set Screw (M5 x 6) .....	2	43	098460-040	Ball Bearing (6004ZZ) .....	1
4	981313-001	Nylon Set Screw (M5 x 6) .....	2	44	588031-004	Screw (Special) .....	2
5	982006-001	Data Plate .....	1	45	588023-001	Lock Pin Cap .....	1
6	976684-001	Brush Holder .....	2	46	630000-000	"O" Ring .....	1
7	900030-402	Screw (M4 x 25) .....	3	47	588022-102	Lock Pin .....	1
8	976683-001	Brush Assembly .....	2	48	470000-600	E-Ring .....	1
9	976682-001	Brush Cap .....	2	49	800030-401	Screw (M4 x 16) .....	1
10	982024-001	Warning Label .....	1	50	588021-009	Rubber Bumper .....	1
11	588016-004	Handle Cover .....	1	51	989377-002	Ball Bearing (6000LLB) .....	1
12	588014-002	Compression Spring .....	1	52	588028-001	Gear .....	1
13	595008-004	Lock-Off Lever .....	1	53	588029-007	Lock Ring .....	1
14	976678-001	Switch Spring .....	1	54	130030-501	Screw (M5 x 10) .....	1
15	595025-006	Switch Holder .....	1	55	976739-001	Lower Blade Guard Bracket .....	1
16	595004-000	Switch Trigger .....	1	56	350105-131	Washer (M5) .....	1
17	976795-001	Field .....	1	57	589015-001	Screw .....	1
18	595007-008	Switch .....	1	58	350304-100	Washer M4) .....	1
19	900030-401	Screw (M4 x 12) .....	2	59	130030-601	Bolt (M4 x 10) .....	1
20	976673-001	Cord Clamp .....	1	60	588041-009	Connect Plate .....	1
21	976671-001	Connect Wire .....	1	61	350308-200	Flat Washer (M8) .....	1
22	977439-001	Power Cord .....	1	62	588042-005	Link Nut .....	1
23	976688-001	Bend Relief .....	1	63	981641-001	Lower Blade Guard .....	1
24	901010-506	Screw (M5 x 60) .....	2	64	976554-001	Return Spring .....	1
25	588017-000	Fan Casing .....	1	65	976548-001	Blade Bolt (M8 x 20) .....	1
26	976873-001	Ball Bearing .....	1	66	976547-001	Blade Washer .....	2
27	976794-001	Armature Assembly (Inc. Key Nos. 26, 34 & 35) .....	1	67	982023-001	Blade .....	1
28	588025-003	Handle Washer .....	2	68	588075-008	Label-Upper Guard .....	1
29	170030-601	Screw .....	2	69	100030-501	Screw (M5 x 12) .....	5
30	300030-100	Hex Nut (M10) .....	1	70	190010-401	Phillips Screw .....	1
31	180031-002	Depth Stop Adjustment Screw (M10 x 20) .....	1	71	588048-001	Lock Nut .....	1
32	300030-121	Hex Nut (M12) .....	2	72	130030-401	Screw (M4 x 15) .....	1
33	350312-260	Flat Washer (M12) .....	1	73	589031-007	Stopper .....	1
34	976874-001	External Retaining Ring .....	2	74	317030-050	Lock Nut .....	1
35	976875-001	Ball Bearing .....	1	75	350305-122	Washer (M5) .....	1
36	586004-108	Frame Arm .....	1	76	589034-005	Deflector .....	1
37	588024-007	Carrying Handle .....	1	77	317030-040	Lock Nut .....	1
38	976650-001	Spindle Lock Pin .....	1	78	976731-001	Upper Blade Guard Assembly .....	1
39	976651-001	E-Ring .....	1	79	976757-001	Dust Guide .....	1
40	976649-001	Compression Spring .....	1	80	588068-001	Logo Plate .....	1

RYOBI 10 in. (254 mm) MITER SAW – MODEL NUMBER TS1300

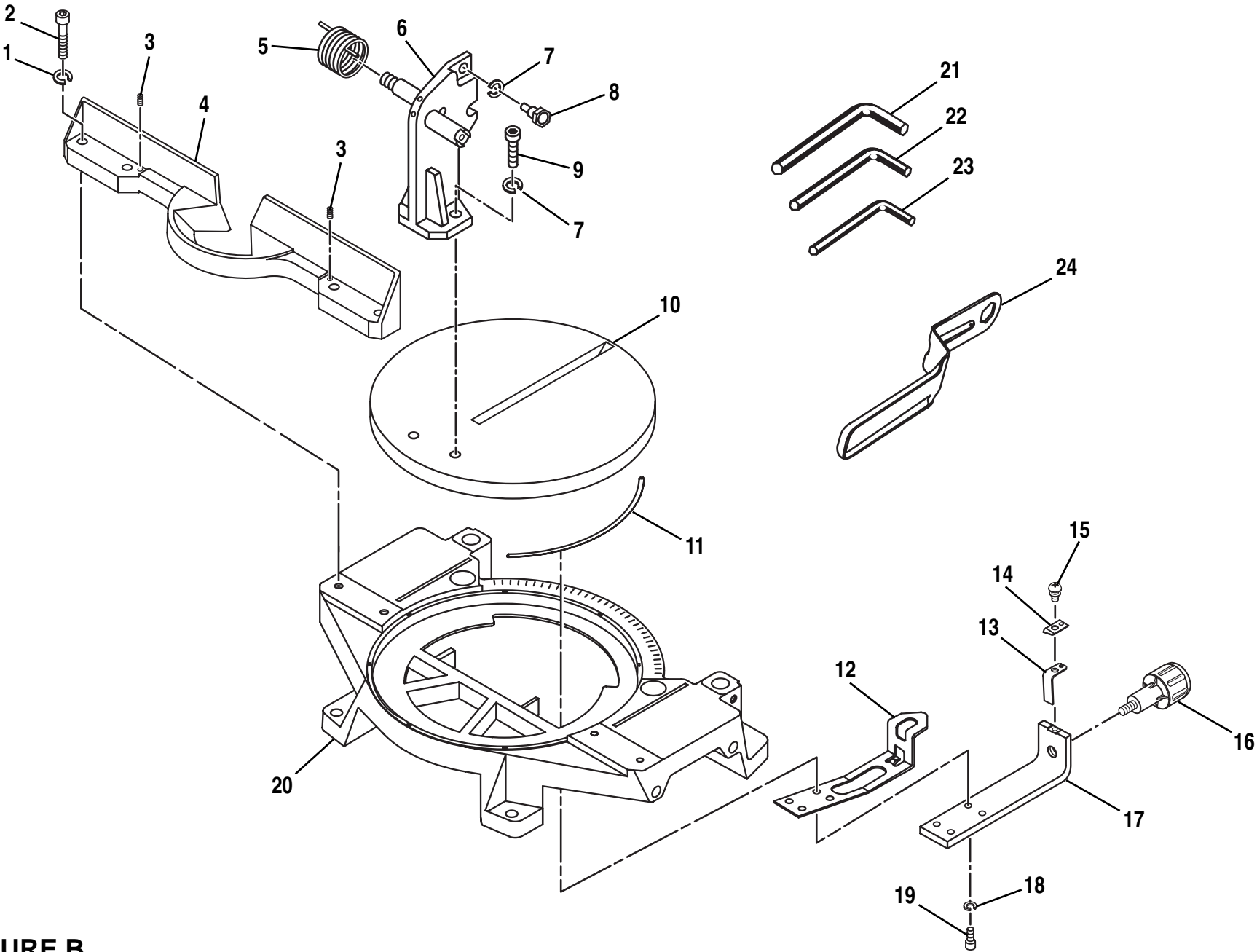


FIGURE B

## RYOBI 10 in. (254 mm) MITER SAW – MODEL NUMBER TS1300

The model number will be found on a plate attached to the motor housing. Always mention the model number in all correspondence regarding your **MITER SAW** or when ordering repair parts.

### FIGURE B PARTS LIST

Key No	Part Number	Description	Quan.
1	360308-142	Lock Washer (M8) .....	4
2	710308-045	Bolt (M8 x 45) .....	4
3	981313-001	Nylon Set Screw (M5 x 6) .....	2
4	982013-001	Fence .....	1
5	588049-007	Spring .....	1
6	982011-001	Mounting Bracket.....	1
7	360310-182	Lock Washer.....	3
8	588058-006	Screw .....	1
9	700310-025	Screw (M10 x 25 Hex Socket) .....	2
10	982010-001	Miter Table .....	1
11	588056-004	Shim.....	4
12	982009-001	Miter Lock Plate .....	1
13	588061-009	Fixed Plate .....	1
14	588060-003	Indexing Plate .....	1
15	140030-500	Screw (Pan Head) .....	1
16	982008-001	Miter Lock Handle.....	1
17	589015-007	Control Arm .....	1
18	360306-121	Lock Washer .....	4
19	700306-020	Bolt.....	4
20	982007-001	Miter Table Base .....	1
21	976569-001	8 mm Hex Key .....	1
22	976605-001	6 mm Hex Key .....	1
23	791050-000	5 mm Hex Key .....	1
24	4240024	Blade Wrench .....	1
	4090001	Optional Dust Bag (Not Shown) .....	1
	982021-001	Optional Work Clamp (Not Shown) .....	1
	982022-001	Optional Table Extensions with Stop Block (Not Shown) .....	1
	972000-746	Operator's Manual	
	8-02-04		