

RYOBI
7-1/4 in. COMPOUND MITER SAW
MODEL NUMBER TS1143L
REPAIR SHEET

RYOBI 7-1/4 in. COMPOUND MITER SAW – MODEL NUMBER TS1143L

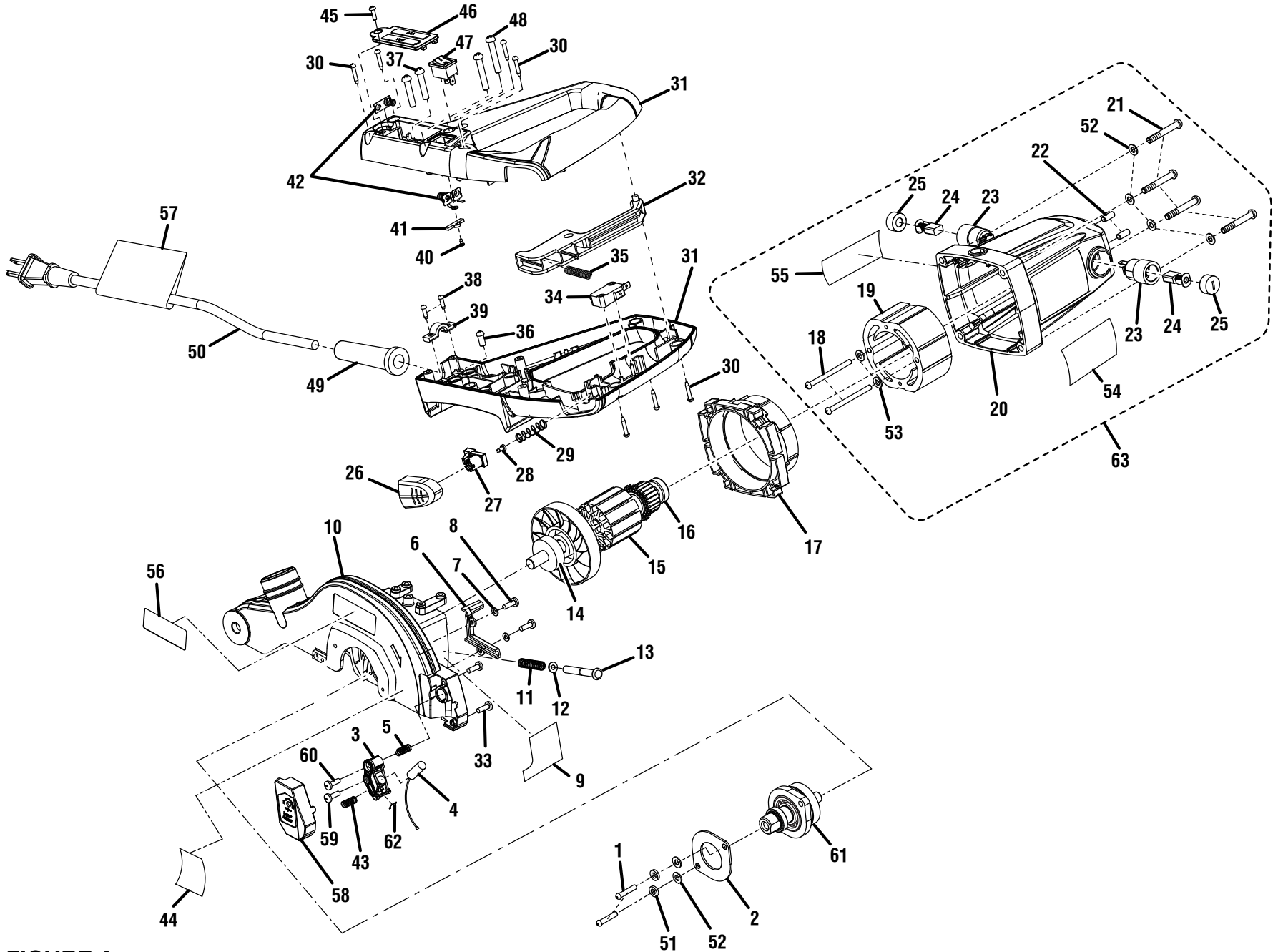


FIGURE A

RYOBI 7-1/4 in. COMPOUND MITER SAW – MODEL NUMBER TS1143L

The model number will be found on a label attached to the motor housing. Always mention the model number in all correspondence regarding your 7-1/4 in. **COMPOUND MITER SAW** or when ordering parts.

PARTS LIST FOR FIGURE A

KEY NO.	PART NUMBER	DESCRIPTION	QTY	KEY NO.	PART NUMBER	DESCRIPTION	QTY
1	089240006087	Screw (M5 x 20 mm, Pan Hd.)	2	33	089041014016	Screw (M4.2 x 18 mm)	2
2	089240006088	Bearing Cover	1	34	089240006120	Switch	1
3	089041014010	Laser Bracket	1	35	089240006121	Trigger Button Spring	1
4	089041014011	Laser Diode	1	36	089240006122	Screw (M5 x 10 mm, Pan Hd.)	1
5	089041014012	Compression Spring (B)	1	37	089240006123	Screw (M5 x 25 mm, Pan Hd.)	2
6	089041014013	Wire Cover	1	38	089240006124	Screw	2
7	089041014014	Washer (D4)	2	39	089240006125	Cord Clamp	1
8	089240006143	Screw (M4 x 8 mm, Pan Hd.)	2	40	089240006126	Screw (M2.9 x 10 mm)	1
9	089041014902	Aperture Warning Label	1	41	089240006127	Terminal Cover	1
10	089041014701	Upper Blade Guard w/Bearing Assembly	1	42	089240006715	Terminal Plate Assembly	1
11	089240006097	Compression Spring	1	43	089041014008	Compression Spring	1
12	089240006098	C-Ring	1	44	089240001907	Screw Warning Label	1
13	089240006099	Spindle Lock Pin	1	45	089240006131	Screw (M4 x 10 mm, Pan Hd.)	1
14	089240006100	Ball Bearing (6200Z)	1	46	089240006132	Battery Box Cover	1
15	089240006711	Armature Assembly (Inc. Key Nos. 14 and 16)	1	47	089240006133	Laser Switch	1
16	089240006102	Ball Bearing (608)	1	48	089240006134	Screw (M5 x 30 mm, Pan Hd.)	2
17	089240006103	Baffle	1	49	089240006135	Bend Relief	1
18	089240006104	Screw (M4 x 45 mm)	2	50	089240006710	Power Cord Assembly (Inc. Key No. 57)	1
19	089240006105	Field	1	51	089240006137	Spring Washer (OD7.8 x ID5.2 x 1.2t)	2
20	089041014705	Motor Housing w/Labels (Inc. Key Nos. 54-55)	1	52	089240006138	Washer (OD9 x ID5 x 1t)	6
21	089240006107	Screw (M5 x 35 mm, Pan Hd.)	4	53	089240006139	Washer (OD8 x ID4 x 1t)	2
22	089240006108	Screw (M5 x 8 mm, Hex. Soc. Hd.)	2	54	089240001902	Warning Label	1
23	089240006109	Brush Holder	2	55	089041014901	Data Label	1
24	089240006110	Brush Assembly	2	56	089240001905	Logo Label	1
25	089240006111	Brush Cover	1	57	080006014904	Cord Label	1
26	089240006112	Trigger Lock Button	1	58	089041014005	Laser Cover	1
27	089240006113	Inner Trigger Lock Button	1	59	089041014006	Screw (M4 x 28 mm, Pan Hd.)	1
28	089240006114	Screw	1	60	089041014007	Screw (M4 x 18 mm, Pan Hd.)	1
29	089240006115	Compression Spring	1	61	089240006706	Spindle Assembly (Inc. Key Nos. 3-8)	1
30	089240006116	Screw	7	62	089041014009	Spring Clip	1
31	089041014704	D-Handle Assembly	1	63	089041014708	Motor Housing Assembly (Inc. Key Nos. 18-20, 22-25 and 52-55)	1
32	089240006118	Trigger	1				

RYOBI 7-1/4 in. COMPOUND MITER SAW – MODEL NUMBER TS1143L

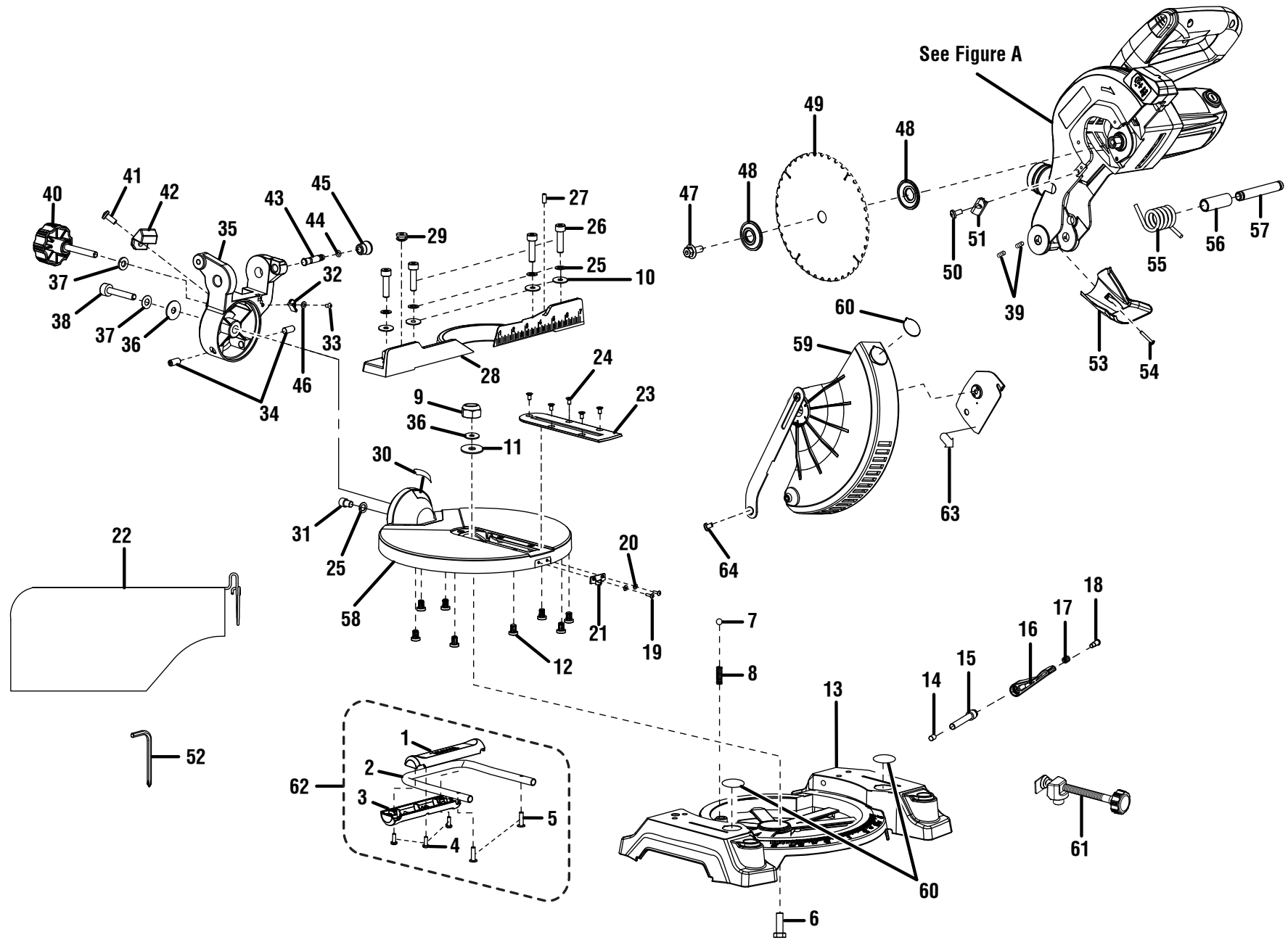


FIGURE B

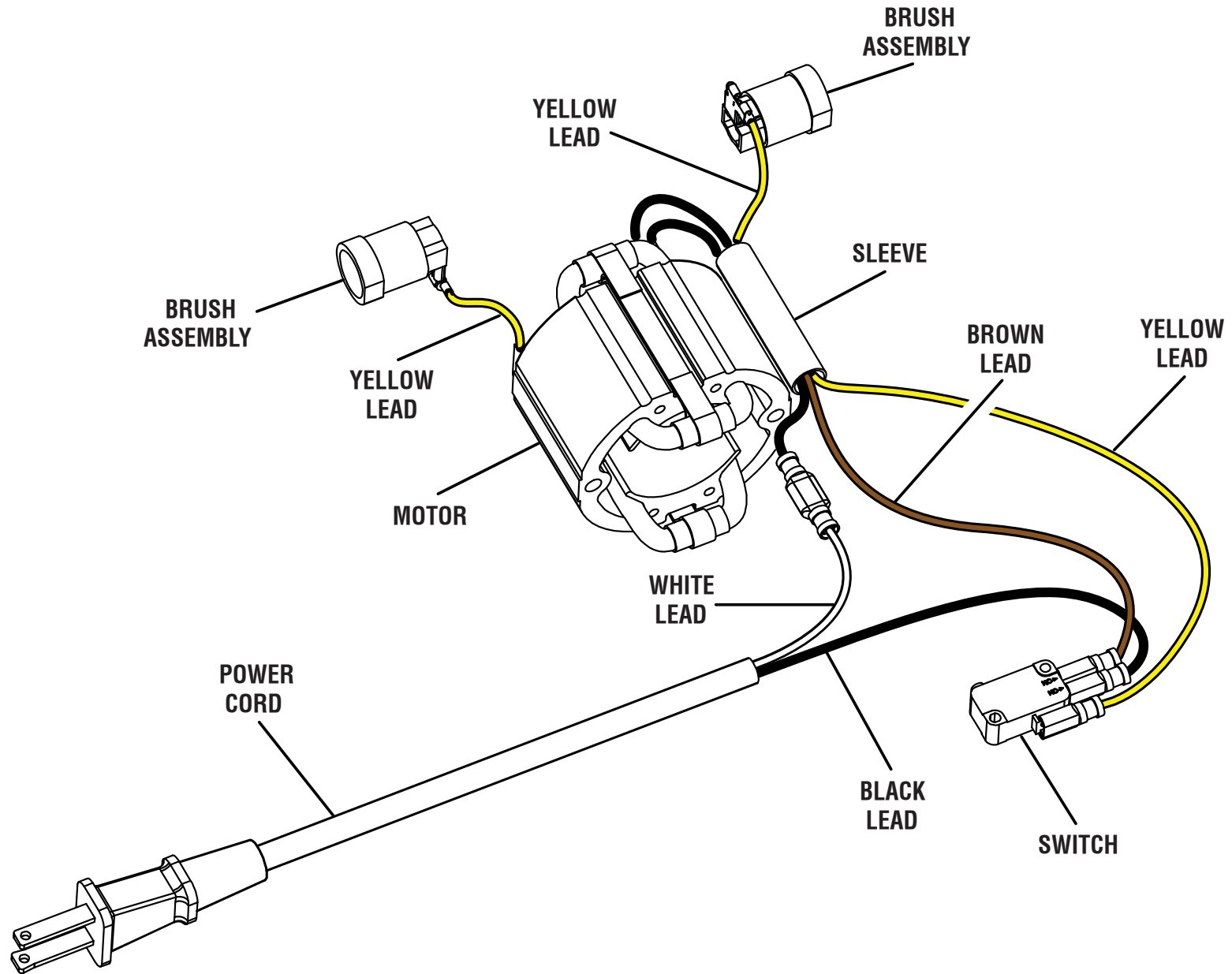
RYOBI 7-1/4 in. COMPOUND MITER SAW – MODEL NUMBER TS1143L

The model number will be found on a label attached to the motor housing. Always mention the model number in all correspondence regarding your 7-1/4 in. COMPOUND MITER SAW or when ordering parts.

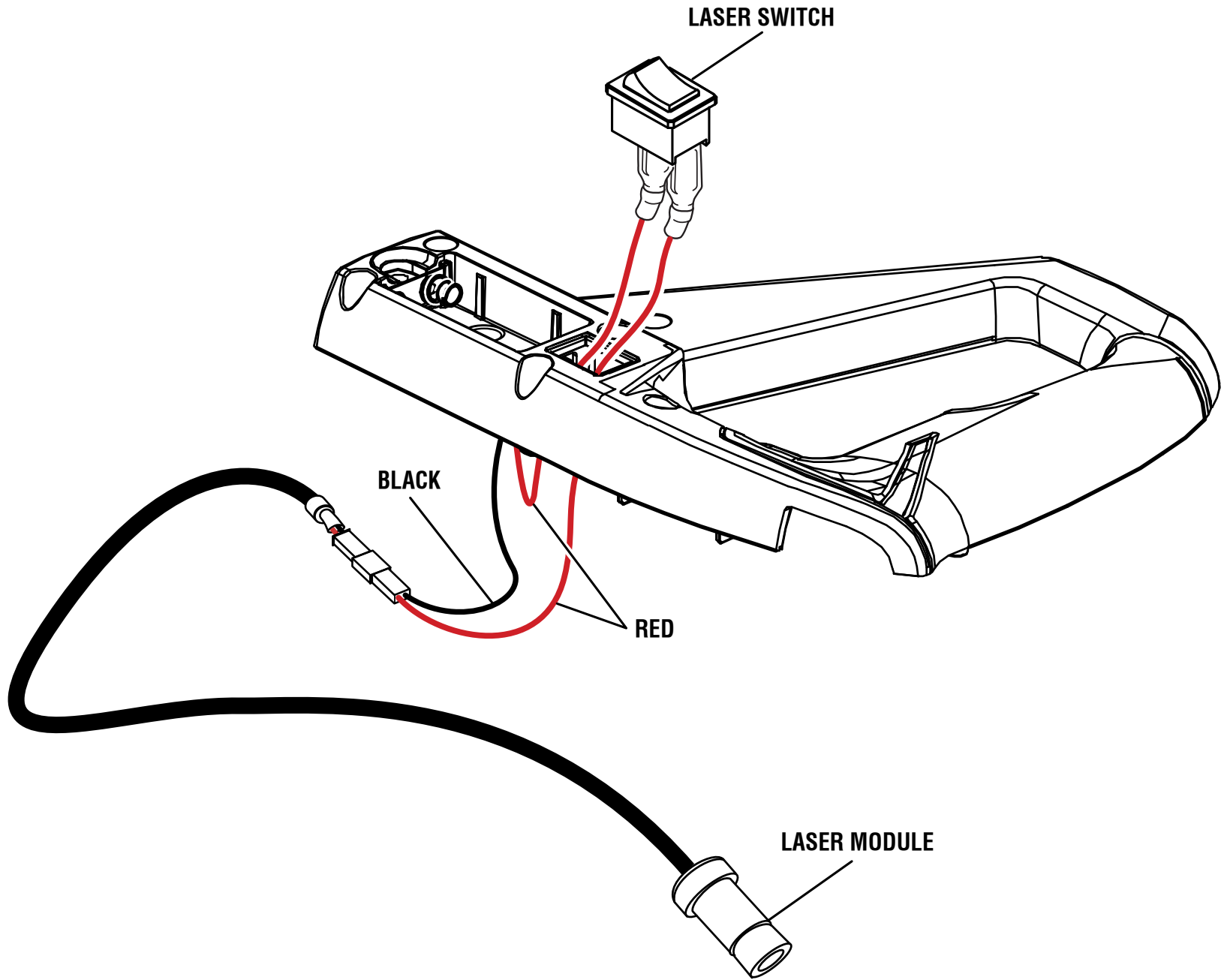
PARTS LIST FOR FIGURE B

KEY NO.	PART NUMBER	DESCRIPTION	QTY	KEY NO.	PART NUMBER	DESCRIPTION	QTY
1	089240006061	Rear Handle (Upper).....	1	36	089240006036	Bowl Washer (OD18 x ID8.5 mm x 0.5t).....	2
2	089240003002	Rear Extension Bar.....	1	37	089240006037	Washer (OD22 x ID8.5 x 2.5t).....	2
3	089240006003	Rear Handle (Lower).....	1	38	089240006038	Screw (M8 x 44 mm, Cap Soc. Hd.).....	1
4	089240003004	Screw (M3.9 x 12 mm, Hex. Soc. Hd.).....	3	39	089240006065	Screw (M4 x 8 mm, Soc. Hd.).....	2
5	089240003005	Screw (M5 x 18 mm, Pan Hd.).....	2	40	089240006040	Bevel Knob.....	1
6	089240006006	Bolt (M8 x 20 mm, Hex Hd.).....	1	41	089240006041	Screw (M4 x 10 mm, Pan Hd.).....	1
7	089240006007	Steel Ball (8 mm).....	1	42	089240006042	Stop Block.....	1
8	089240006008	Detent Spring.....	1	43	089041014018	Spindle Lock Pin.....	1
9	089240006009	Lock Nut (M8).....	1	44	089240006053	O-Ring.....	1
10	089240006010	Washer (OD15 x ID8 x 1.5t).....	4	45	089041014019	Lock Pin Cap.....	1
11	089240006011	Washer (OD25 x ID8.5 x 1.9t).....	1	46	089240006086	Washer (OD7.8 x ID4 x 1.0t).....	1
12	089240006012	Miter Pad.....	8	47	089240006059	Blade Bolt.....	1
13	089240006703	Base Assembly (Inc. Key No. 60).....	1	48	089240006060	Blade Washer.....	2
14	089240006014	Miter Lock Pad.....	1	49	089240006001	Blade (24t).....	1
15	089240006015	Miter Lock Screw.....	1	50	089240006063	Screw (M4 x 10 mm, Pan Hd.).....	1
16	089240006016	Miter Lock Lever.....	1	51	089240006064	Guard Stop Block.....	1
17	089240006017	Compression Spring.....	1	52	089240006085	Hex Key Wrench (M5 x 80 mm x 35 mm).....	1
18	089240006018	Screw (M5 x 17 mm, Pan Hd.).....	1	53	089240006067	Dust Chute.....	1
19	089240006019	Screw (M3 x 10 mm, Pan Hd.).....	2	54	089240006066	Screw (M4 x 20 mm, Pan Hd.).....	1
20	089240006020	Washer (OD6.5 x ID3 x 0.8t).....	2	55	089240006068	Torsion Spring.....	1
21	089240006021	Miter Indicator.....	1	56	089240006069	Spring Spacer.....	1
22	089240006084	Dust Bag Assembly.....	1	57	089240006070	Pivot Pin.....	1
23	089240006023	Throat Plate.....	1	58	089041014707	Miter Table Assembly (Inc. Key No. 30).....	1
24	089240006024	Screw (M4 x 8 mm, Flat Hd.).....	5	59	089041014702	Lower Blade Guard Assembly (Inc. Key Nos. 60 and 63).....	1
25	089240006025	Lock Washer (OD12.5 x ID8.3 x 2.2t).....	5	60	089100207097	No Hands Label.....	3
26	089240006026	Bolt (M8 x 30 mm, Cap Soc Hd.).....	4	61	089240006708	Work Clamp Assembly.....	1
27	089240006027	Screw (M6 x 12 mm).....	1	62	089240006702	Rear Carry Handle Assembly (Inc. Key Nos. 1-5).....	1
28	089240006028	Miter Fence.....	1	63	089100207051	Screw Direction Label.....	1
29	089240006029	Grommet.....	1	64	089240006043	Screw (M6 x 10 mm).....	1
30	089240001904	Bevel Scale Label.....	1		NOT SHOWN:		
31	089240006031	Screw (M8 x 8 mm, Cap Soc. Hd.).....	1		990000955	Operator's Manual	
32	089240006032	Bevel Pointer.....	1		12-6-17		
33	089240006143	Screw (M4 x 8 mm, Pan Hd.).....	1		(Rev:05)		
34	089240006034	Screw (M8 x 14 mm, Soc. Hd.).....	2				
35	089041014001	Knuckle.....	1				

RYOBI 7-1/4 in. COMPOUND MITER SAW – MODEL NUMBER TS1143L



WIRING DIAGRAM



WIRING DIAGRAM