

RYOBI 7-1/4 in. COMPOUND MITER SAW - MODEL NUMBER TS1142L

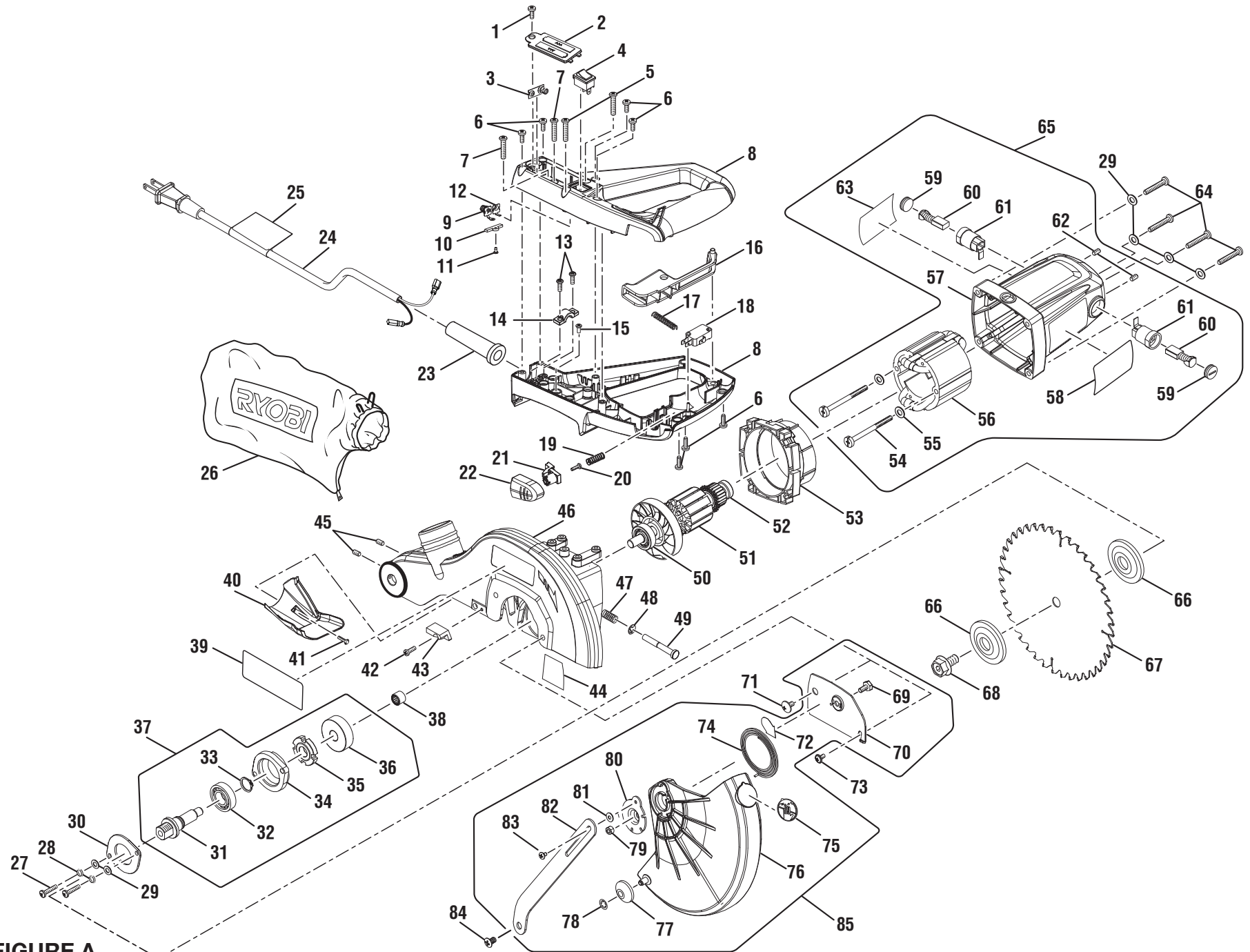


FIGURE A

## RYOBI 7-1/4 in. COMPOUND MITER SAW – MODEL NUMBER TS1142L

The model number will be found on a label attached to the motor housing. Always mention the model number in all correspondence regarding your 7-1/4 in. **COMPOUND MITER SAW** or when ordering parts.

### PARTS LIST FOR FIGURE A

KEY NO.	PART NUMBER	DESCRIPTION	QTY	KEY NO.	PART NUMBER	DESCRIPTION	QTY
1	089240003131	Screw (M4 x 10 mm, Pan Hd.).....	1	44	089240001907	Screw Warning Label.....	1
2	089240003132	Battery Box.....	1	45	089240003065	Set Screw (M4 x 20 mm, Soc. Hd.) .....	2
3	089240003130	Terminal Plate A.....	1	46	089240003705	Upper Blade Guard Assembly.....	1
4	089240003133	Laser Switch.....	1	47	089240003097	Compression Spring.....	1
5	089240003134	Screw (M5 x 30 mm).....	2	48	089240003098	C-Ring (4).....	1
6	089240003116	Screw (M4.2 x 16 mm).....	7	49	089240003099	Spindle Lock Pin.....	1
7	089240003123	Screw (M5 x 25 mm, Pan Hd.).....	2	50	089240003100	Ball Bearing (6200Z) .....	1
8	089240003713	D-Handle Assembly.....	1	51	089240003711	Armature Assembly (Incl. Key Nos. 50 and 52) .....	1
9	089240003128	Terminal Plate B.....	1	52	089240003102	Ball Bearing (608).....	1
10	089240003127	Terminal Cover.....	1	53	089240003103	Baffle.....	1
11	089240003126	Screw (M2.9 x 10 mm).....	1	54	089240003104	Screw (M4 x 45 mm).....	2
12	089240003129	Terminal Plate C.....	1	55	089240003139	Washer (OD8 x ID4 x 1t) .....	2
13	089240003124	Screw (M4.2 x 10 mm).....	2	56	089240003105	Field .....	1
14	089240003125	Cord Clamp .....	1	57	089240003701	Motor Housing.....	1
15	089240003122	Screw (M5 x 10 mm, Pan Hd.).....	1	58	089240001902	Warning Label (English) .....	1
16	089240003118	Trigger.....	1	59	089240003111	Brush Cover.....	2
17	089240003121	Compression Spring.....	1	60	089240003110	Brush .....	2
18	089240003120	Switch.....	1	61	089240003109	Brush Holder.....	2
19	089240003115	Compression Spring.....	1	62	089240003108	Set Screw (M5 x 8 mm, Soc. Hd.) .....	2
20	089240003114	Screw.....	1	63	089240003901	Data Label .....	1
21	089240003113	Trigger Lock Button (Inner) .....	1	64	089240003107	Screw (M5 x 35 mm, Pan Hd.).....	4
22	089240003112	Trigger Lock Button .....	1	65	082940003709	Motor Housing Assembly (Incl. Key Nos. 54-63).....	1
23	089240003135	Bend Relief .....	1	66	089240003060	Blade Washer .....	2
24	089240003710	Cord Assembly (Incl. Key No. 25).....	1	67	089240003001	Blade (24T).....	1
25	080006014904	Cord Tag (French/Spanish).....	1	68	089240003059	Blade Bolt .....	1
26	089240003084	Dust Bag Assembly .....	1	69	089240003071	Screw (M6 x 11 mm, Hex Hd.).....	1
27	089240003087	Screw (M5 x 20 mm, Pan Hd.).....	2	70	089240003072	Cover Plate (Guard) .....	1
28	089240003137	Lock Washer (OD7.8 x ID5.2 x 1.2t) .....	2	71	089240003073	Screw (M5 x 9 mm, Pan Hd.).....	1
29	089240003138	Washer (OD9 x ID5 x 1t) .....	6	72	089100207051	Arbor Screw Warning Label.....	1
30	089240003088	Bearing Cover.....	1	73	089240003075	Screw (M6 x 8 mm, Pan Hd.).....	1
31	089240003089	Output Shaft .....	1	74	089240003074	Torsion Spring.....	1
32	089240003090	Ball Bearing (6002Z) .....	1	75	089100207097	No Hands Label.....	1
33	089240003091	Retaining Ring .....	1	76	089240003051	Low Blade Guard.....	1
34	089240003092	Bearing Bracket.....	1	77	089240003050	Guide Roller.....	1
35	089240003093	Blade Change Plate.....	1	78	089240003049	Retaining Ring (Internal Tooth).....	1
36	089240003094	Gear.....	1	79	089240003046	Lock Nut (M6) .....	1
37	089240003706	Spindle Assembly (Incl. Key Nos. 31-36) .....	1	80	089240003048	Center Plate.....	1
38	089240003095	Needle Bearing .....	1	81	089240003047	Washer (OD12 x ID6.5 x 1.2t) .....	1
39	089240001905	Logo Label.....	1	82	089240003044	Link Arm.....	1
40	089240003067	Dust Chute.....	1	83	089240003045	Screw (M5 x 10 mm, Pan Hd.).....	1
41	089240003066	Screw (M4 x 20 mm, Pan Hd.).....	1	84	089240003043	Screw (M6 x 10 mm, Pan Hd.).....	1
42	089240003063	Screw (M4 x 10 mm, Pan Hd.).....	1	85	089240003707	Lower Guard Assembly (Incl. Key Nos. 69-70, 72 and 74-83).....	1
43	089240003064	Guard Stop Block .....	1				

RYOBI 7-1/4 in. COMPOUND MITER SAW - MODEL NUMBER TS1142L

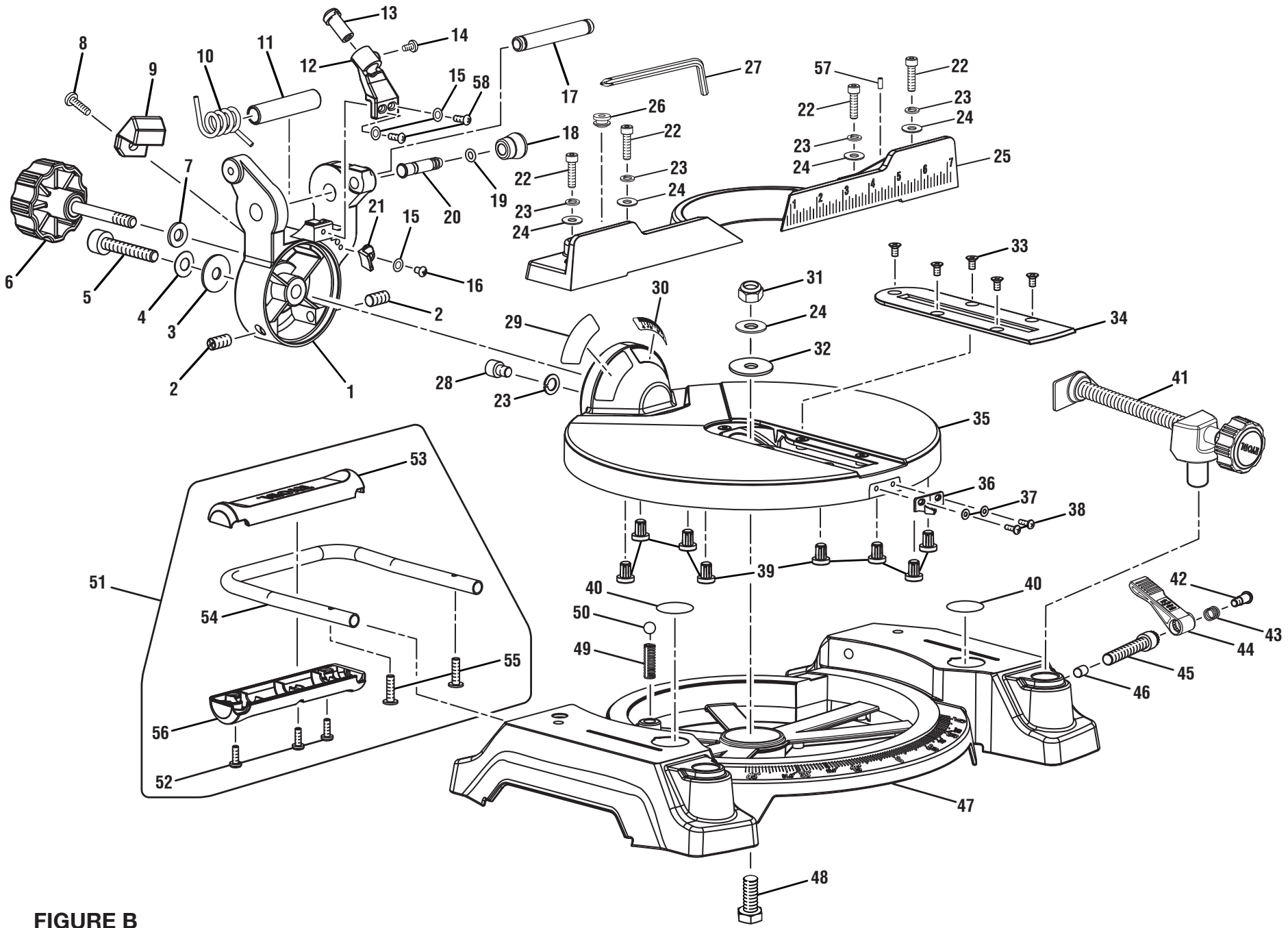


FIGURE B

## RYOBI 7-1/4 in. COMPOUND MITER SAW – MODEL NUMBER TS1142L

The model number will be found on a label attached to the motor housing. Always mention the model number in all correspondence regarding your 7-1/4 in. COMPOUND MITER SAW or when ordering parts.

### PARTS LIST FOR FIGURE B

KEY NO.	PART NUMBER	DESCRIPTION	QTY	KEY NO.	PART NUMBER	DESCRIPTION	QTY
1	089240003142	Knuckle.....	1	32	089240003011	Washer (OD25.5 x ID10.5 x 1.9t).....	1
2	089240003034	Screw (M8 x 48 mm, Soc. Hd.).....	2	33	089240003024	Screw (M4 x 8 mm, Flat Hd.).....	5
3	089240003036	Washer (OD22 x ID8.5 mm x 1.3t).....	1	34	089240003023	Throat Plate.....	1
4	089240003037	Washer (OD18 x ID8.5 x 0.4t).....	1	35	089240003704	Miter Table Assembly (Incl. Key Nos. 29-30).....	1
5	089240003038	Screw (M8 x 48 mm, Cap. Soc. Hd.).....	1	36	089240003021	Miter Pointer.....	1
6	089240003040	Bevel Knob.....	1	37	089240003020	Washer (ID6.5 x OD3 x 0.8t).....	2
7	089240003039	Washer (OD22 x ID8.2 x 2.3t).....	1	38	089240003019	Screw (M3 x 10 mm, Pan Hd.).....	2
8	089240003041	Screw (M5 x 12 mm, Pan Hd.).....	1	39	089240003012	Miter Pad.....	8
9	089240003042	Stop Block.....	1	40	089100207097	No Hands Label.....	2
10	089240003068	Torsion Spring.....	1	41	089240003708	Work Clamp Assembly.....	1
11	089240003069	Spacer.....	1	42	089240003018	Screw (M5 x 17 mm, Phillips Hd.).....	1
12	089240003141	Laser Bracket.....	1	43	089240003017	Compression Spring (Shoulder).....	1
13	089240003056	Laser Diode w/Cap.....	1	44	089240003016	Miter Lock Lever.....	1
14	089240003058	Screw (M4 x 6 mm, Pan Hd.).....	1	45	089240003015	Miter Lock Screw.....	1
15	089240003086	Washer (OD7.8 x ID4 x 1t).....	3	46	089240003014	Miter Lock Pad.....	1
16	089240003033	Screw (M4 x 8 mm, Pan Hd.).....	1	47	089240003703	Base Assembly (Incl. Key No. 40).....	1
17	089240003070	Pivot Pin.....	1	48	089240003006	Bolt (M8 x 20 mm, Hex Hd.).....	1
18	089240003054	Lock Pin Cap.....	1	49	089240003008	Detent Spring.....	1
19	089240003053	O-Ring.....	1	50	089240003007	Steel Ball (8 mm).....	1
20	089240003052	Spindle Lock Pin.....	1	51	089240003702	Carry Handle Assembly (Incl. Key Nos. 51-56)....	1
21	089240003032	Bevel Pointer.....	1	52	089240003004	Screw (M3.9 x 12 mm, Pan Hd.).....	3
22	089240003026	Bolt (M8 x 30 mm, Cap Soc. Hd.).....	4	53	089240003061	Carry Handle (Upper).....	1
23	089240003025	Lock Washer (OD12.5 x ID8.3 x 2.2t).....	5	54	089240003002	Rear Extension Bar.....	1
24	089240003010	Washer (OD8 x ID5 x 1.5t).....	5	55	089240003005	Screw (M5 x 8 mm, Pan Hd.).....	2
25	089240003028	Miter Fence.....	1	56	089240003003	Carry Handle (Lower).....	1
26	089240003029	Grommet.....	1	57	089240003027	Screw (M6 x 12 mm).....	1
27	089240003085	Hex Key (5 mm).....	1	58	089240003143	Screw (M4 x 10 mm, Pan Hd.).....	2
28	089240003031	Screw (M8 x 10 mm, Cap Soc. Hd.).....	1		<b>NOT SHOWN:</b>		
29	089240001903	Aperture Warning Label.....	1		990000278	Operator's Manual	
30	089240001904	Bevel Scale Label.....	1		2-13-13		
31	089240003009	Lock Nut (M10).....	1		(Rev:02)		