



Operating Instructions and Parts Manual Table Powerfeed

Models TPFA-X, TPFA-Y, TPFA-Z

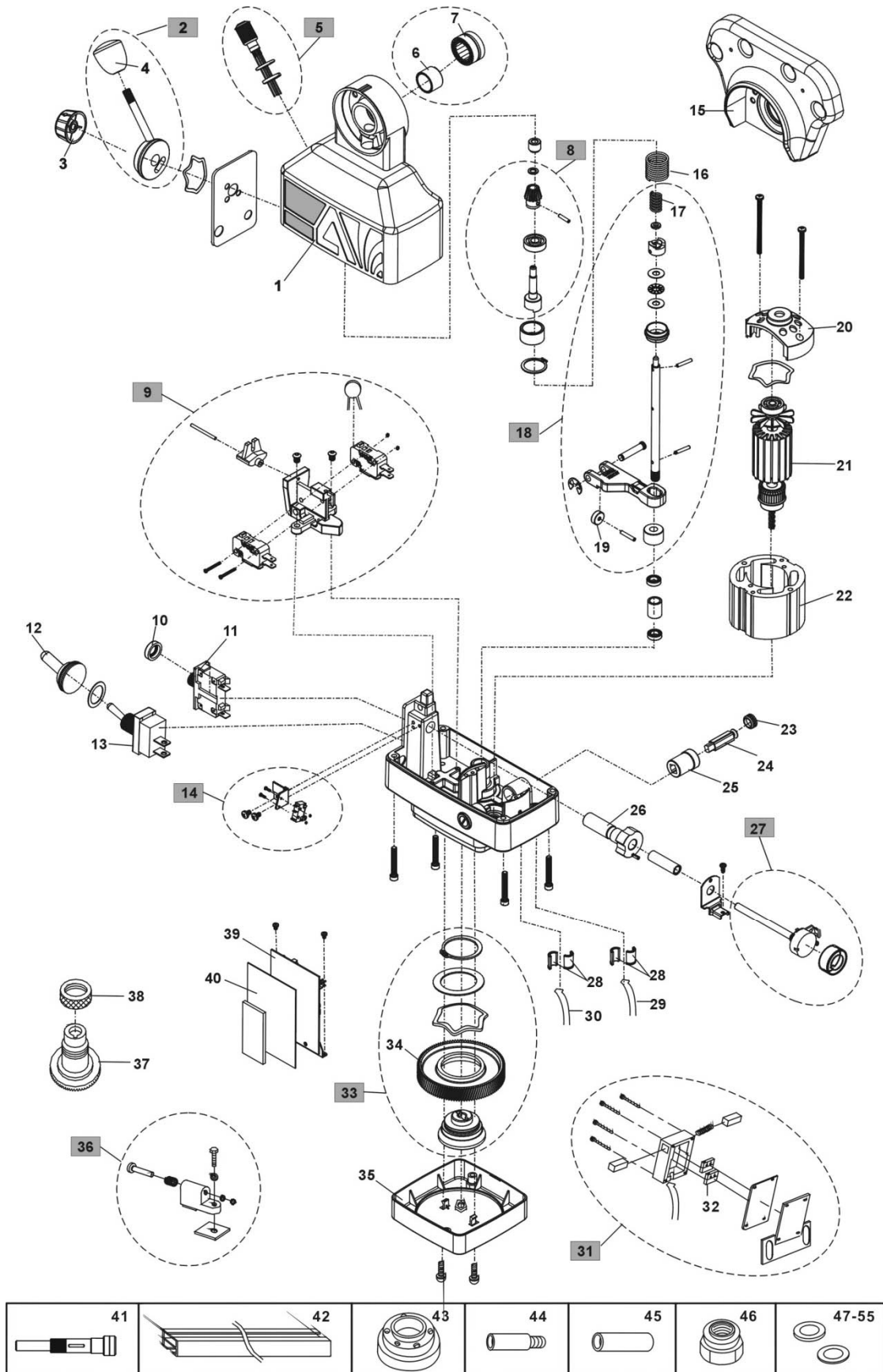


JET

427 New Sanford Road
LaVergne, Tennessee 37086
Ph.: 800-274-6848
www.jettools.com

Part No. M-350194
Revision B1 08/2014
Copyright © 2014 JET

8.1.1 Table Powerfeed – Exploded View



8.1.2 Table Powerfeed – Parts List

Index No.	Part No.	Description	Size	Qty
1	TPFA2-PT000-11	Top Housing	TPFA-X	1
2	TPFA2-P01810-11	Control Handle Assembly	180°	1
	P01816-11	Control Handle Assembly (TPFA-Z only)	90°	1
3	TPFA2-P01811-00	Speed Control Knob/Black	ø35.5 x ø29.9 x 19mm	1
4	E0913-00	Handle Knob Assembly/Black	ø31.8 x 33mm	1
5	C0509	Anti-Vandal switch		1
6	A0101B	Inner Ring	ø24 x 16mm	1
7	A0101C	Needle Bearing		1
8	TPFA-PT200	SP Drive Gear Assembly	780 in/lb	1
9	TPFA2-C0501-6V	Direction Switch Assembly		1
10	A0102-01	Cap of Circuit Breaker		1
11	TPFA2-A0102	Circuit Breaker		1
12	E0907-01	Cap of ON/OFF Switch	R13-25A	1
13	TPFA2-E0907	ON/OFF Switch		1
14	C0508	Brake Switch Assembly	6A 125VAC/250AC	1
15	PZ001-13	Adaptor		1
	PZ001-13BH	Adaptor (black hammer color)		1
16	A0112	Spring for Top Housing		1
17	A0301-05	Spring for clutch		1
18	PB300	Forklift Assembly		1
19	P01028	Forklift Ring		2
20	P01082	Armature Mount		1
21	P01907	SP Armature Assembly	780 in/lb	1
22	TPFA2-E0926V	Motor Field		1
23	TPFA2-E0906	Carbon Brush Cap		2
24	TPFA2-E0905	Brush		2
25	TPFA2-P01004	Carbon Brush Holder		2
26	TPFA2-E0902V	250 Cam Assembly		1
27	TPFA2-P01905	Potentiometer Assembly	10K	1
28	E0917	Strain Relief		1
29	TPFA2-E24002	Control Cord	0.75 x 4C x 1.7M	1
30	E23017	Power Cord	0.75 x 3C x 2.7M	1
31	P01910-AL	Limit Switch Assembly		1
32	TPFA2-F1104	Micro Switch		2
33	PB800	Plastic Gear Assembly		1
34	TPFA2-PB801	Plastic Gear		1
35	P01809LS-00	Bottom Cover /Black		1
36	P01916-1	X axis Travel Stop Set		1
	P01916	Y/Z axis Travel Stop Set		1
37	P01017	Bevel Gear (X/Y)	5/8" x 1/8" (780 in /lb)	1
	P01032	Bevel Gear (Z)	22 x 4mm	1
38	TPFA2-A0100-01	Dial Lock Nut	1/4" x 20W	1
39	TPFA2-PB400	Circuit Board Assembly		1
40	TPFA2-E0918V	Circuit Board Insulator		1
41	P01922	Extension Shaft	16T	1
42	A0301-15A	T-Way Track	59.5 cm	1
43	PFB-01A	Steel Stand	29.6 mm	1
44	PFB-16	Extension Shaft	60 mm	1
45	PFB-03	Extension Shaft Ring	40 mm	1
46	PFR-76A	Nut	1/2"-20 x 14.3mm	1
47	TPFA2-A0100-02A	Washer (Optional /not shown)	0.2 x ø34 x Ø45mm	N
48	TPFA2-A0100-02B	Washer (Optional /not shown)	0.4 x ø34 x Ø45mm	N
49	TPFA2-A0100-02C	Washer (Optional /not shown)	0.6 x ø34 x Ø45mm	N
50	TPFA2-A0100-02D	Washer (Optional /not shown)	0.1 x ø34 x Ø45mm	N
51	TPFA2-A0100-04A	Washer (Optional /not shown)	0.2 x ø16 x Ø23.5mm	N
52	TPFA2-A0100-04B	Washer (Optional /not shown)	0.4 x ø16 x Ø23.5mm	N
53	TPFA2-A0100-04C	Washer (Optional /not shown)	0.6 x ø16 x Ø23.5mm	N
54	TPFA2-A0100-04E	Washer (Optional /not shown)	0.1 x ø16 x Ø23.5mm	N
55	TPFA2-A0100-07A	Washer (Optional /not shown)	2 x ø16 x Ø25.4mm	N