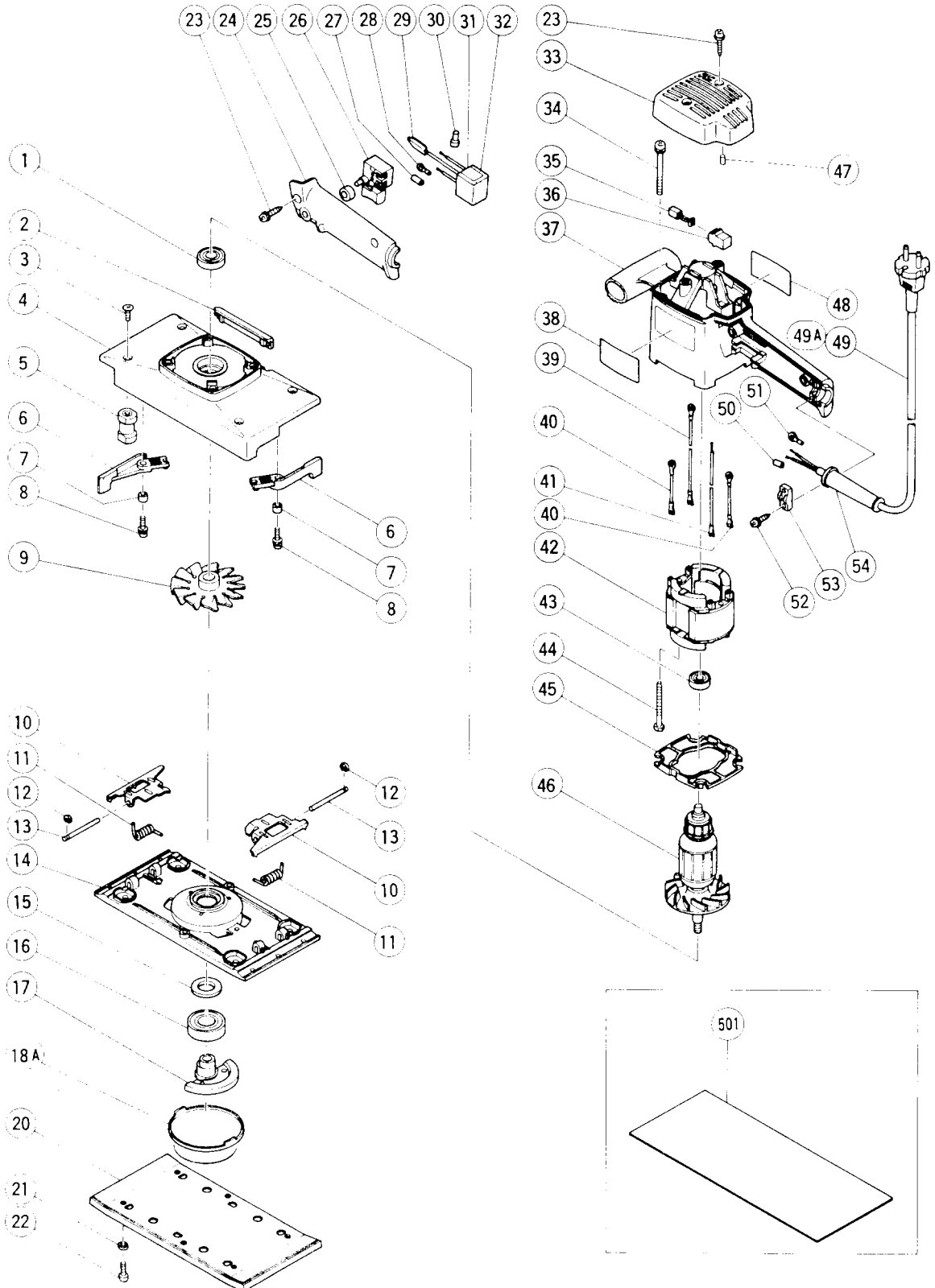


ELECTRIC TOOL PARTS LIST

ORBITAL SANDER
Model SV 12SE

1994 · 4 · 4
 (E3)



PARTS

SV 12SE

ITEM NO.	CODE NO.	DESCRIPTION	NO. USED	REMARKS
1	600-1DD	BALL BEARING 6001DDUCMPS2S	1	
2	300-191	COVER PIECE	1	
3	992-013	SEAL LOCK FLAT HD. SCREW M5X14	4	
4	300-172	FRAME	1	
5	300-317	RUBBER LEG	4	
6	300-181	LEVER	2	
7	953-066	DISTANCE PIECE	2	
8	993-539	MACHINE SCREW (W/WASHERS) M4X16	2	
9	300-192	FAN	1	
10	300-162	PAPER HOLDER	2	
11	953-320	SPRING	2	
12	872-971	RETAINING RING (E - TYPE) FOR D3 SHAFT	2	
13	300-163	HOLDER BAR	2	
14	300-173	BOTTOM PLATE	1	
15	300-166	FELT	1	
16	620-3DD	BALL BEARING 6203DDUCMAV2S	1	
17	300-321	BALANCE WEIGHT	1	
18A	300-318	COVER	1	
20	300-091	SANDING PAD	1	
21	949-454	SPRING WASHER M5 (10 PCS.)	6	
22	949-238	MACHINE SCREW M5X14 (10 PCS.)	6	
23	982-095	TAPPING SCREW (W/WASHER) D4X20	4	
24	300-157	HANDLE COVER	1	
25	940-811	PUSHING HOLDER	1	
*	26 957-747	SWITCH (A) (1P SCREW TYPE) W/LOCK	1	
*	26 971-687Z	SWITCH (2P PILLAR TYPE) W/LOCK	1	
*	27 981-373	TUBE (D)	2	FOR NOISE SUPPRESSOR
*	28 980-063	TERMINAL	1	FOR NOISE SUPPRESSOR
*	29 992-635	EARTH TERMINAL	1	FOR NOISE SUPPRESSOR
*	30 959-140	CONNECTOR 50091 (10 PCS.)	1	
*	31 994-273	NOISE SUPPRESSOR	1	
*	32 930-153	SUPPORT (B)	1	FOR NOISE SUPPRESSOR
*	32 963-243	SUPPORT	1	FOR NOISE SUPPRESSOR FOR NZL.SAF
	33 300-156	TOP COVER	1	
	34 300-319	MACHINE SCREW (+ - HD.) M5X60	4	
	35 999-041	CARBON BRUSH (1 PAIR)	2	
	36 930-483	BRUSH HOLDER	2	
	37 300-154	HOUSING	1	
	38 300-190	HITACHI LABEL	1	
*	39 300-179	INTERNAL WIRE	1	
*	39 300-178	INTERNAL WIRE	1	FOR AUS
*	39 300-180	INTERNAL WIRE	1	FOR USA.CAN
*	40 305-775	CHOKE COIL SET	2	
*	40 300-205	INTERNAL WIRE	2	FOR CAN
*	40 301-843	INTERNAL WIRE	2	FOR USA
*	41 300-175	INTERNAL WIRE	1	
*	41 300-176	INTERNAL WIRE	1	FOR EUROPE
*	41 300-181	INTERNAL WIRE	1	FOR AUS
*	41 300-182	INTERNAL WIRE	1	FOR USA.CAN
*	42 340-156C	STATOR 110V - 115V	1	
*	42 340-156D	STATOR 127V	1	

*: ALTERNATIVE PARTS

