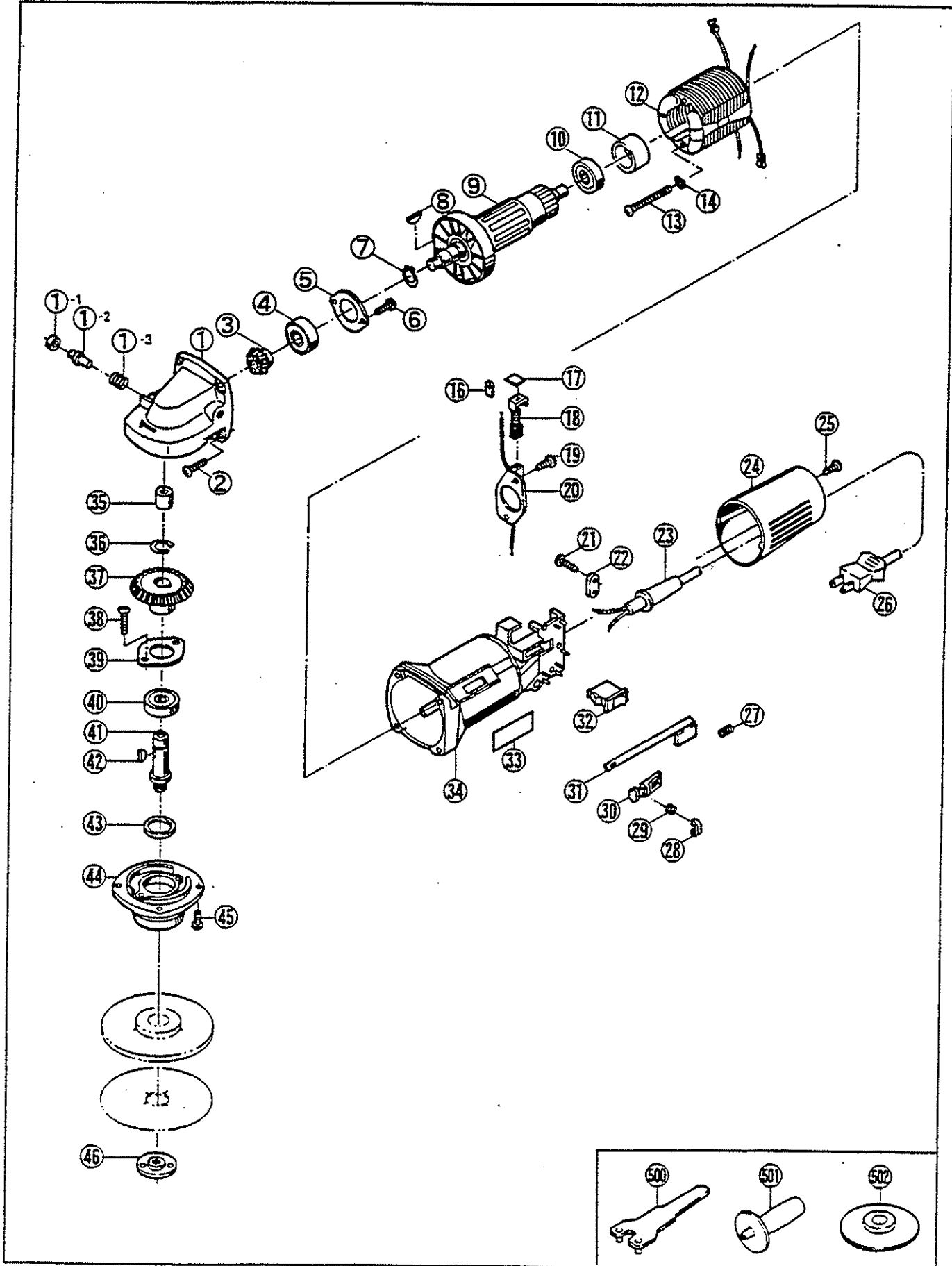


# DISC SANDER

## SG-1150S, SG-1150SC



## PARTS LIST FOR AFTER SALES SERVICE MODEL SG1150S, SG1150SC

	PART NO.	DESCRIPTION	QTY	REF	PART NO.	DESCRIPTION	QTY
	6080075	GEAR CASE	1	27	6180094	COMPRESSION SPRING	1
1-1	6900227	COLLAR	1	28	6360115	SWITCH LOCK BUTTON	1
1-2	6120085	STOPPER PIN	1	29	6180095	COMPRESSION SPRING	1
1-3	6180091	COMPRESSION SPRING	1	30	6360114	SWITCH BUTTON	1
2	9060416	TAPPING SCREW (B) M4X16	4	31	6360110	SWITCH LEVER	1
3	6200062	PINION GEAR	1	32	6550008	TOGGLE SWITCH	1
4	969235005	BALL BEARING #6200LLB	1	33	6911014	NAME PLATE	1
5	6150635	BEARING CLAMP	1	34	6800569	MOTOR HOUSING	1
6	9040410	TAPPING SCREW (S) M4X10	2	35	9910609	NEEDLE BEARING	1
7	9511000	RETAINING RING S-10	1	36	9511200	RETAINING RING S-12	1
8	6100077	WOODRUFF KEY	1	37	6200061	BEVEL GEAR	1
9	6030664	ARMATURE	1	38	9040408	TAPPING SCREW (S) M4X8	2
10	9840627	BALL BEARING #627LLB	1	39	6150635	BEARING CLAMP	1
11	6370071	BEARING COVER	1	40	9846201	BALL BEARING #6201LLB	1
12	6500612	FIELD COIL	1	41	6110064	GEAR SHAFT	1
13	9060460	TAPPING SCREW (B) M4X60	2	42	6100077	WOODRUFF KEY	1
14	9550400	SPRING WASHER M4	2	43	6900231	FELT WASHER	1
16	6570035	INSULATOR	2	44	6820258	GEAR CASE COVER	1
18	6541173	CARBON BRUSH SET	1	45	9040412	TAPPING SCREW (S) M4X12	4
19	9060408	TAPPING SCREW (B) M4X8	2	46	6072873	CLAMP NUT	1
20	6570098	BRUSH HOLDER	1	—	6560051	SPRING CONNECTOR	1
21	9060416	TAPPING SCREW (B) M4X16	2				
22	6560055	CORD CLAMP	1				
	6560131	CORD HOLDER	1				
					<b>STANDARD ACCESSORIES</b>		
24	6800575	HOUSING COVER	1	500	6240403	LOCK-NUT WRENCH	1
25	9060412	TAPPING SCREW (B) M4X12	1	501	6830679	SIDE HANDLE M10	1
26	6520331	CORD ASS'Y AWG#18X2X2	1	502	6940484	SANDING PAD	1

**SERVICE NOTES:**