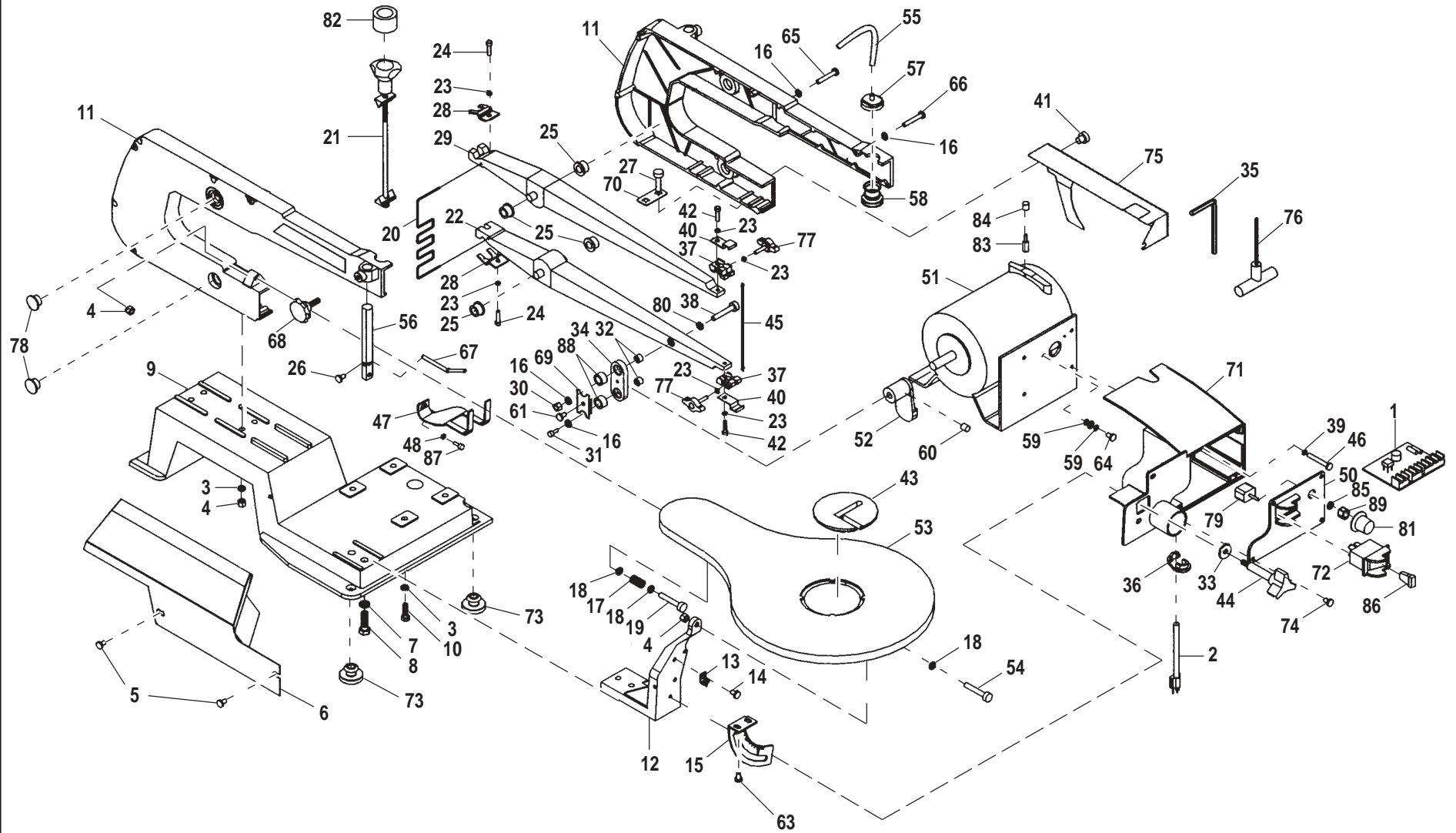


# RYOBI 16 in. (406 mm) SCROLL SAW – MODEL SC163VS



## RYOBI 16 in. (406 mm) SCROLL SAW – MODEL SC163VS

The model number will be found on a plate attached to the motor housing. Always mention the model number in all correspondence regarding your **Scroll Saw** or when ordering repair parts.

### PARTS LIST

Key No.	Part Number	Description	Qty.	Key No.	Part Number	Description	Qty.
1	S1605007	CIRCUIT BOARD .....	1	23	TSC11005	* LOCK WASHER (M4) .....	6
2	S1605004A	POWER CORD .....	1	24	TSC07002	* CAP SCREW (M4 X 10 mm) .....	2
3	TSC11007	* LOCK WASHER (M6) .....	8	25	S1601003	FLANGE BEARING .....	4
4	TSC06001	* HEX NUT (M6) .....	6	26	TSC07010	* SCREW (M5 X 6 mm) .....	1
5	TSC07008	* SCREW (M5 X 10 mm) .....	5	27	TSC13001	* BOLT (M6 X 25 mm) .....	4
6	S1601009F	COVER PLATE .....	1	28	S1604004	RETAINER .....	2
7	TSC11003	* LOCK WASHER (M8) .....	2	29	S1602001A-1	UPPER ARM .....	1
8	TSC05001	* BOLT (M8 X 25 mm) .....	2	30	TSC06002	* HEX NUT (M5) .....	1
9	S1601004C	BASE .....	1	31	TSC07003	* CAP SCREW (M5 X 20 mm) .....	1
10	TSC05002	* BOLT (M6 X 16 mm) .....	4	32	S1602003	SPACER .....	2
11	S1601001	HOUSING ASSEMBLY .....	1	33	TSC11006	* LARGE WASHER (M6) .....	1
12	S1601006C	TABLE SUPPORT .....	1	34	S1602002-1	LINK .....	1
13	S1601012	SCALE INDICATOR .....	1	35	TSC04001	4 MM HEX KEY .....	1
14	TSC07009	* SCREW (M6 X 12 mm) .....	1	36	TSC12001	STRAIN RELIEF .....	1
15	S1601010	SCALE BRACKET .....	1	37	S1603005A	BLADE HOLDER .....	2
16	TSC11004	* LOCK WASHER (M5) .....	10	38	TSC07004	* CAP SCREW (M5 X 25 mm) .....	1
17	S1601008	SPRING .....	1	39	TSC11009	* WASHER (M4) .....	4
18	TSC11008	* WASHER (M6) .....	3	40	S1603007	PLATE CLIP .....	4
19	TSC07001	* CAP SCREW (M6 X 40 mm) .....	1	41	TSC07016	* SCREW (ST4.2 X 10 mm) .....	1
20	S1604005	SPRING .....	1	42	TSC07005	* CAP SCREW (M4 X 16 mm) .....	2
21	S1604001	BLADE TENSION SET .....	1	43	S1603004A	THROAT PLATE .....	1
22	S1602001A-2	LOWER ARM.....	1	44	S1601016A	TABLE LOCK KNOB .....	1

**WARNING: Improper repair of a double insulated tool can result in damage to the double insulation system possibly causing electrical shock or electrocution. Any repairs requiring disassembly of your tool requires safety testing and should only be performed by a Ryobi Authorized Service Center. For the service center nearest you call 1-800-525-2579.**

\* Standard Hardware Item – May Be Purchased Locally

## RYOBI 16 in. (406 mm) SCROLL SAW – MODEL SC163VS

The model number will be found on a plate attached to the motor housing. Always mention the model number in all correspondence regarding your **Scroll Saw** or when ordering repair parts.

### PARTS LIST

Key No.	Part Number	Description	Qty.	Key No.	Part Number	Description	Qty.
45	S1603003	BLADE .....	2	73	S1601032A	RUBBER FOOT .....	4
46	TSC07011	* SCREW (M4 X 16 mm) .....	2	74	TCS07018	* SCREW (ST4.2 X 13 mm) .....	4
47	S1601014	DROP FOOT .....	1	75	S1601023D	COVER PLATE .....	1
48	TSC11001	* TOOTH WASHER (M5) .....	1	76	S1603008	3 MM T-HANDLE HEX KEY .....	1
50	S1605006M	SWITCH PLATE .....	1	77	S1604011	BLADE CLAMP SCREW .....	2
51	S1605001H	MOTOR .....	1	78	S1603009	ARM BEARING COVER .....	1
52	S1602005B	COUNTERBALANCE .....	1	79	S1605010	PC BOARD ASSEMBLY .....	1
53	S1601007	SAW TABLE .....	1	80	TSC11010	* WASHER (M5) .....	1
54	TSC07006	* CAP SCREW (M6 X 40 mm) .....	1	81	S1605011	VARIABLE SPEED KNOB .....	1
55	S1601018	PLASTIC TUBING .....	1	82	S1604010A	BUSHING .....	1
56	S1601015	DROP FOOT ROD .....	1	83	S1605001H-1	BRUSH ASSEMBLY .....	1
57	S1601020	BELLOWS TUBE .....	1	84	S1605001H-2	BRUSH CAP .....	1
58	S1601019	BELLOWS .....	1	85	TSC11011	* LOCK WASHER (M10) .....	1
59	TSC11002	* TOOTH WASHER (M4) .....	4	86	S1605003A-1	SWITCH KEY .....	1
60	TSC07007	* SET SCREW (M8 X 8 mm) .....	1	87	TSC07019	* CAP SCREW (M5 X 10 mm) .....	1
61	TSC07017	* SCREW (ST4.2 X 8 mm) .....	1	88	TSC14001	BALL BEARING 625ZZ .....	2
63	TSC07012	* SCREW (M5 X 8 mm) .....	2	89	TSC06003	* HEX NUT (M10) .....	1
64	TSC07013	* SCREW (M4 X 6 mm) .....	2	90	S1606002Z	LOGO PLATE (NOT SHOWN) .....	1
65	TSC07014	* SCREW (M5 X 35 mm) .....	5	91	S1606004S	DATA PLATE (NOT SHOWN) .....	1
66	TSC07015	* SCREW (M5 X 30 mm) .....	3	92	S16106001	GROUND LABEL (NOT SHOWN) .....	1
67	S1601017	SAW DUST BLOWER .....	1	93	S1606003N	WARNING LABEL (NOT SHOWN) .....	1
68	S1601011	DROP FOOT LOCK KNOB .....	1	94	S1606009	BLADE TENSIONING LABEL (NOT SHOWN) .	1
69	S1602002-2	BEARING RETAINER .....	1	95	S1606012A	BLADE WARNING LABEL (NOT SHOWN) ...	1
70	S1601005	BOLT RETAINER .....	2		972000-884	OPERATOR'S MANUAL	
71	S1605005F	SWITCH BOX .....	1		972000-884R	REPAIR SHEET	
72	S1605003A	SWITCH AND SWITCH KEY .....	1		10-21-03		

\* Standard Hardware Item – May Be Purchased Locally