

RYOBI 16 in. SCROLL SAW – MODEL NUMBER SC155VS

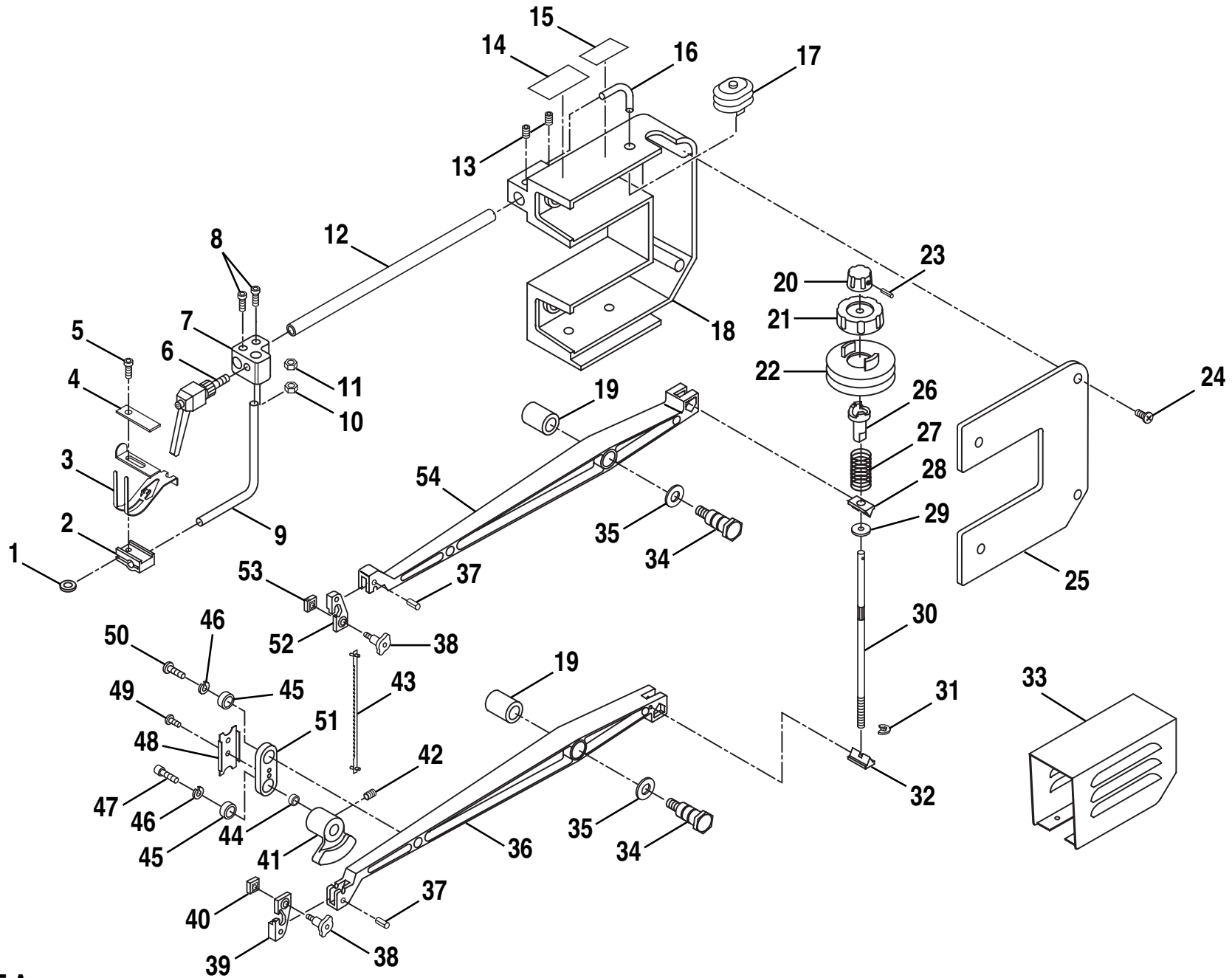


FIGURE A

RYOBI 16 in. SCROLL SAW – MODEL NUMBER SC155VS

The model number will be found on a plate attached to the base. Always mention the model number in all correspondence regarding your **SCROLL SAW** or when ordering repair parts.

SEE BACK PAGE FOR PARTS ORDERING INSTRUCTIONS

PARTS LIST FOR FIGURE A

Key No.	Part Number	Description	Quan.	Key No.	Part Number	Description	Quan.
1	350305122	Flat Washer (M5).....	1	28	102019004	Tension Nut	1
2	105022006	Clamp	1	29	979828001	Spacer	1
3	105023002	Hold Down Foot.....	1	30	105028002	Tension Bolt	1
4	102031006	Support Plate	1	31	981366001	"E" Ring (E-3)	1
5	700305016	* Bolt (M5 x 16 Hex Socket)	1	32	105012001	Wedge	1
6	104056002	Lock Lever	1	33	105019003	Arm Cover	1
7	104055006	Connector	1	34	104030006	Shoulder Bolt	2
8	700305018	* Bolt (M5 x 18 Hex Soc.)	2	35	380314300	Spring Washer.....	2
9	105021000	Hold Down Rod	1	36	105016005	Lower Arm	1
10	300030050	* Hex Nut (M5)	2	37	420010501	Roll Pin (M5 x 14)	2
11	981368001	Hex Nut (M6 x 3.6)	1	38	981395001	* Wing Knob	2
12	105020004	Support Bar	1	39	101004200	Lower Blade Holder	1
13	180030801	Screw (M8 x 10)	2	40	101031100	Lower Blade Clamp	1
14	168043003	Warning Label	1	41	105014003	Eccentric Coupling	1
15	168042007	Warning Label	1	42	180030600	* Set Screw (M6 x 6 Hex Soc. Hd.)	1
16	105013007	Hose	1	43	101074001	* Blade	1
17	102020005	Bellows	1	44	100025009	Bearing	1
18	105002006	Housing	1	45	979758001	Bearing (625ZZ)	2
19	105016002	Bushing.....	2	46	360305000	* Lock Washer (M5)	2
20	979827001	Tension Adjusting Knob	1	47	700305018	* Bolt (M5 x 18 Hex Soc. Hd.).....	1
21	979736001	Quick Release Knob.....	1	48	104062002	Bearing Holder	1
22	979742001	Rubber Boot	1	49	230030400	* Screw (M4 x 8 Pan Hd.)	1
23	420010031	Roll Pin (M3 x 16)	1	50	800305018	* Cap Screw (M5 x 20 Hex Soc. Hd.)	1
24	160030601	* Screw (M6 x 15 Pan Hd.)	4	51	104038004	Arm Link	1
25	105025004	Arm Cover (Right)	1	52	101003204	Upper Blade Holder	1
26	105027006	Cam	1	53	101030104	Upper Blade Clamp	1
27	105024008	Arm Spring	1	54	105011005	Upper Arm	1

* Standard Hardware Item – May Be Purchased Locally

RYOBI 16 in. SCROLL SAW – MODEL NUMBER SC155VS

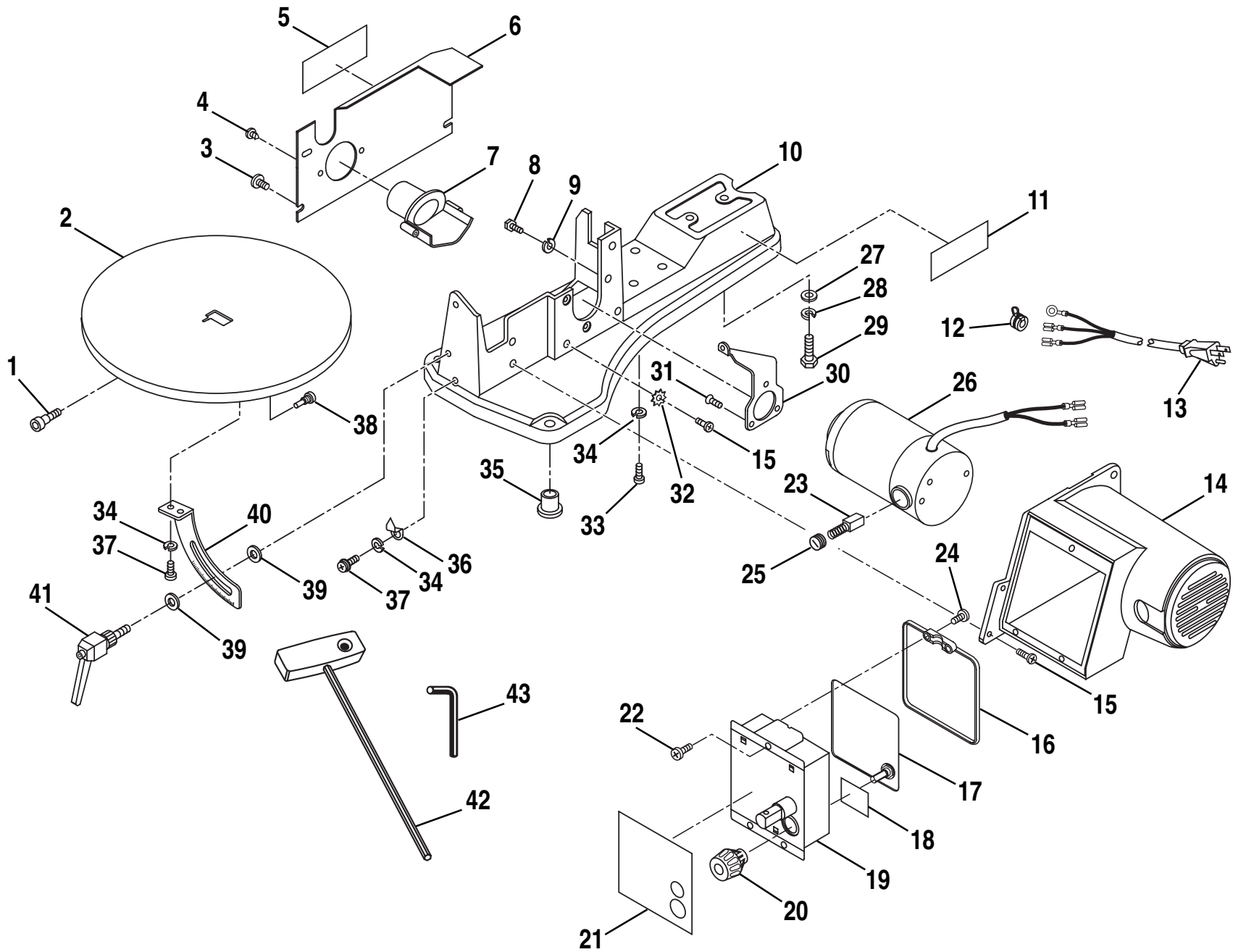


FIGURE B

RYOBI 16 in. SCROLL SAW – MODEL NUMBER SC155VS

The model number will be found on a plate attached to the base. Always mention the model number in all correspondence regarding your **SCROLL SAW** or when ordering repair parts.

SEE BACK PAGE FOR PARTS ORDERING INSTRUCTIONS

PARTS LIST FOR FIGURE B

Key No.	Part Number	Description	Quan.	Key No.	Part Number	Description	Quan.
1	102039004	Table Screw	1	23	981396001	Brush Assembly	2
2	105015009	Table	1	24	981374001	Screw (M4 x 15 Pan Hd.)	2
3	190030500	* Screw (M5 x 8 Pan Hd.)	3	25	981397001	Brush Cap	2
4	979766001	Screw (M4 x 16 Pan Hd.)	2	26	980123001	Motor Assembly	1
5	168041001	Warning Label	1	27	350308161	* Spring Washer (M8)	2
6	981365001	Cover Plate	1	28	360308000	* Lock Washer (M8)	2
7	981369001	Nozzle	1	29	100308020	Screw (M8 x 25 Hex Hd.)	2
8	300305015	* Hex Bolt (M5 x 16)	3	30	981364001	Table Support	1
9	Incl w/#8	Washer (M5)	3	31	160030400	* Screw (M4 x 8 Pan Hd.)	3
10	981362001	Base	1	32	981379001	Star Washer (M5)	1
11	981363001	Data Plate	1	33	100030501	* Screw (M5 x 15 Pan Hd.)	4
12	979791001	Strain Relief	1	34	360305000	* Lock Washer (M5)	7
13	979790001	Cord Assembly	1	35	981367001	Spacer	3
14	981377001	Motor Cover	1	36	104022003	Pointer	1
15	981378001	Screw (M5 x 12 Pan Hd.)	5	37	190030500	* Screw (M5 x 8 Pan Hd.)	3
16	981375001	Control Box Cover	1	38	981361001	Support Screw	1
17	981372001	PC Board Assembly	1	39	350306162	* Washer (M6)	2
18	979798001	Gasket	1	40	105018007	Bevel Scale	1
19	981376001	Control Box	1	41	104056002	Lock Lever	1
20	981373001	Switch Knob	1	42	101060002	"T" Handle Wrench	1
21	981370001	Switch Label	1	43	101058102	Blade Changing Rod	1
22	981371001	Screw (M5 x 9 Pan Hd.)	3		972000-704	Operator's Manual	

* Standard Hardware Item – May Be Purchased Locally