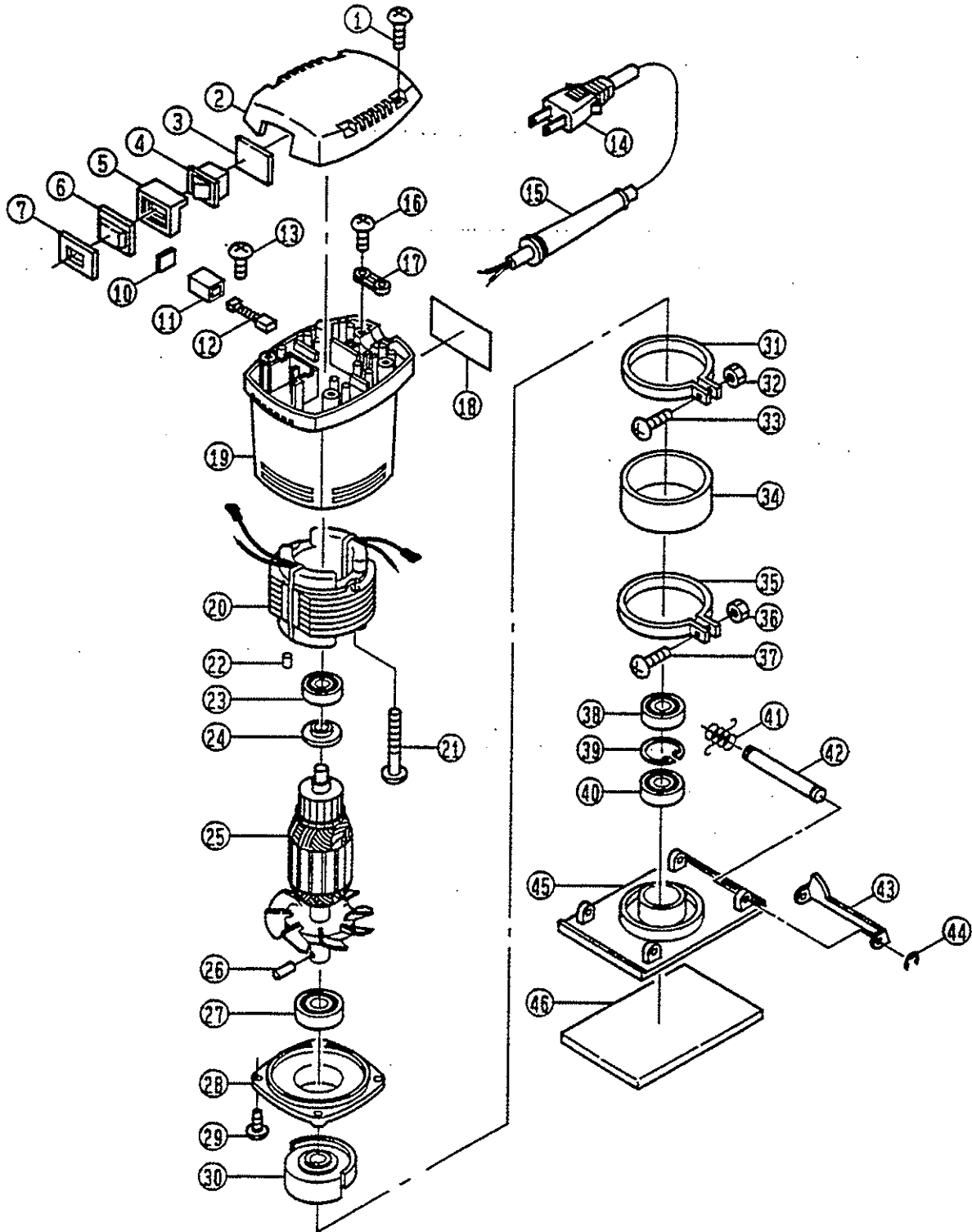


SANDER

S-500A



PARTS LIST FOR AFTER SALES SERVICE MODEL S500A

| | PART NO. | DESCRIPTION | QTY | REF | PART NO. | DESCRIPTION | QTY |
|----|-----------|-------------------------|-----|-----|----------|--------------------------|-----|
| 1 | 9060416 | TAPPING SCREW (B) M4X16 | 4 | 28 | 6320091 | BRACKET | 1 |
| 2 | 6800662 | HOUSING COVER | 1 | 29 | 9060416 | TAPPING SCREW (B) M4X16 | 4 |
| 3 | 6370103 | SPONGE | 1 | 30 | 6320092 | BALANCER | 1 |
| 4 | 6550199 | CURVETTE SWITCH | 1 | 31 | 6150716 | BAND | 1 |
| 5 | 6380121 | SWITCH CASE | 1 | 32 | 9300400 | HEX NUT M4 | 1 |
| 6 | 6370053 | SWITCH COVER | 1 | 33 | 9020418 | PHILLIPS PAN SCREW M4X18 | 1 |
| 7 | 6920299 | INFORMATION LABEL | 1 | 34 | 6370102 | RUBBER POST | 1 |
| 10 | 6360122 | BAKELITE PLATE | 2 | 35 | 6150716 | BAND | 1 |
| 11 | 6570040 | BRUSH HOLDER | 2 | 36 | 9300400 | HEX NUT M4 | 1 |
| 12 | 6540433 | CARBON BRUSH SET | 1 | 37 | 9020418 | PHILLIPS PAN SCREW M4X18 | 1 |
| 13 | 6130659 | TAPPING SCREW (B) M4X10 | 2 | 38 | 9840627 | BALL BEARING #627LLB | 1 |
| 14 | 6520331 | CORD ASS'Y AWG#18X2X2 | 1 | 39 | 9522200 | RETAINING RING R-22 | 1 |
| 15 | 6560144 | CORD HOLDER | 1 | 40 | 9840607 | BALL BEARING #607LLB | 1 |
| 16 | 9060416 | TAPPING SCREW (B) M4X16 | 2 | 41 | 6180107 | CLAMP SPRING | 2 |
| 17 | 6560055 | CORD CLAMP | 1 | 42 | 6120091 | PIN | 2 |
| 18 | 6912744 | NAME PLATE | 1 | 43 | 6150713 | CLAMPER | 2 |
| 19 | 6800659 | MOTOR HOUSING | 1 | 44 | 9500300 | RETAINING RING E-3 | 4 |
| 20 | 6500741 | FIELD COIL | 1 | 45 | 6850212 | PAD | 1 |
| 21 | 9060430 | TAPPING SCREW (B) M4X30 | 2 | 46 | 6370100 | RUBBER SHEET | 1 |
| 22 | 6120126 | RUBBER KNOCK | 1 | -- | 6530232 | FASTEN SLEEVE | 1 |
| 23 | 9840627 | BALL BEARING #627LLB | 1 | -- | 6560051 | SPRING CONNECTOR | 3 |
| 24 | 6530317 | COLLAR | 1 | | | | |
| 25 | 6030835 | ARMATURE | 1 | | | | |
| 26 | 9402006 | SPRING PIN | 1 | | | | |
| 27 | 989235005 | BALL BEARING #6200LLU | 1 | | | | |

SERVICE NOTES: