



SERVICE PARTS LIST

BUL. 54-08-9020

1/4" ELECTRIC DRILL

REVISED BUL 6288-1 DATE FEB. '68

MODEL NO. S-114G

Starting Serial No. 288-1001

WIRING INSTR.

Both Model and Serial No. must be furnished to obtain correct parts.

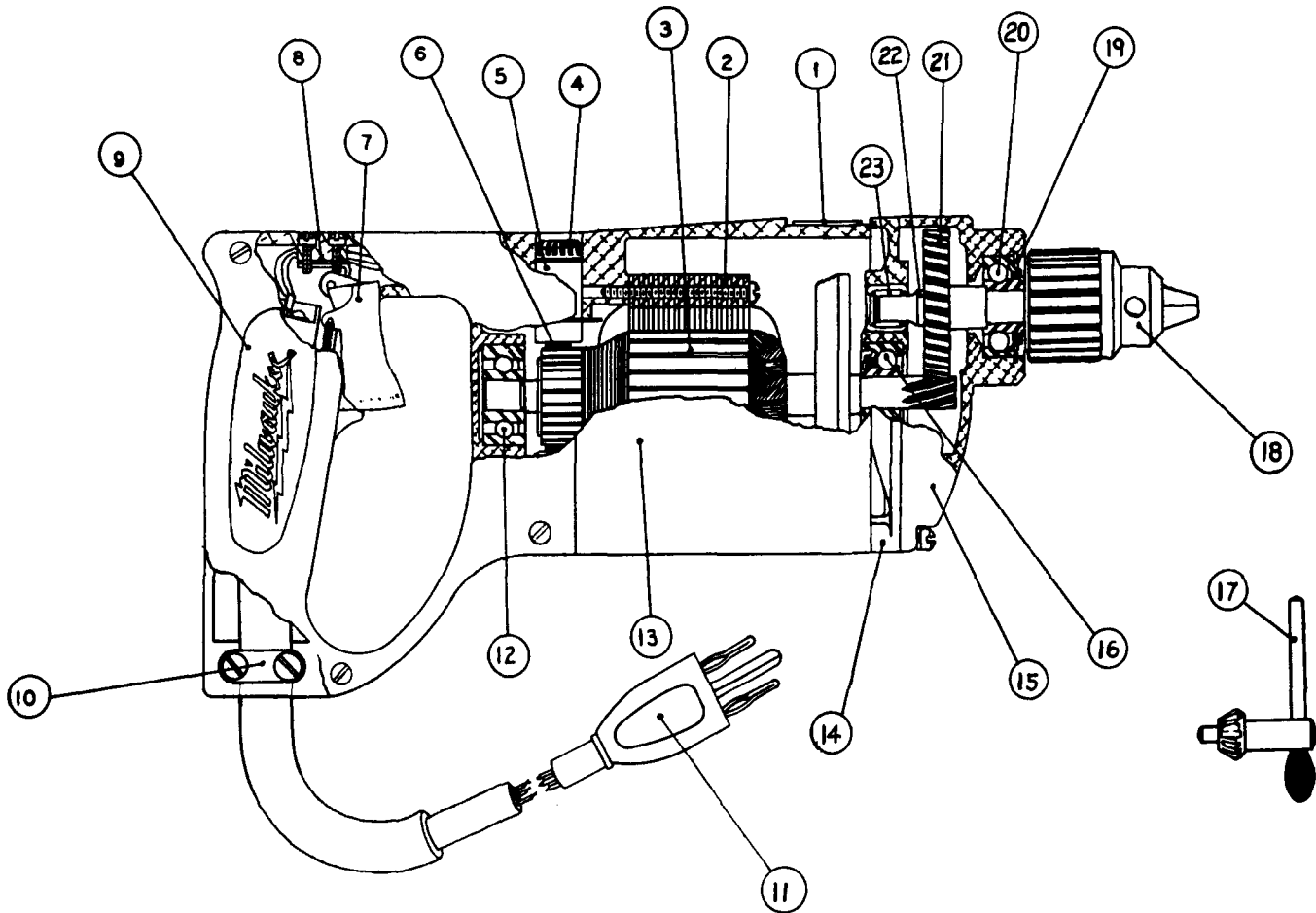


FIG.	PART NO.	DESCRIPTION OF PART
1	12-98-0800	Name Plate
2	18-42-1040	Field Assembly
3	16-42-1170	Armature Assembly
4	23-44-0060	Carbon Brush Ret. Screw
5	22-22-0080	Brush Holder Assembly
6	22-18-0100	Carbon Brush Assemblies
7	23-66-0230	Switch Assembly
8	45-36-0110	Switch Spacer
9	28-20-3141	Handle Cover
10	28-17-0400	Cord Clamp Strap
11	22-64-0240	Cord Set
12	02-04-0970	Ball Bearing

FIG.	PART NO.	DESCRIPTION OF PART
13	28-50-4481	Motor Housing
14	28-28-0821	Diaphragm
15	28-14-0841	Gear Case
16	02-04-0970	Ball Bearing
17	48-66-3200	Chuck Key
18	48-66-0260	Chuck 3-jaw(3/8-24 thread)
19	34-80-2200	Retaining Ring
20	02-04-1060	Ball Bearing
21	32-75-1741	Spindle Gear
22	38-50-3151	Spindle
23	02-50-2110	Bearing Needle

SIZE OR PART NO.	DESCRIPTION OF PART
06-81-8625 6-32x1/4 Rd. Hd.	(Brass) Ground Screw
06-81-6300 8-32x7/8 Fil. Hd. Sems	Gear Case Screw
06-81-6500 8-32x1-3/8 Fil.Hd.Sems	Gear Case Screw
06-42-0800 #207	Woodruff Key
06-81-6100 8-32x7/16 Fil.Hd.Sems	Cord Clamp Screws (2)
06-42-1200 #212	Woodruff Key
06-81-8400 4-40x1/4" Rd.Hd.	Name Plate Screws (2)

SIZE OR PART NO.	DESCRIPTION OF PART
06-81-5800 6-32x5/16 Fil. Hd.Sems	Switch Mtg. Screws (2)
23-86-0110 44D-34	Brush Holder Insul. Washer (2)
23-16-0050 4BF-24	Switch Insulator
06-81-6600 8-32x1 1/4 Fil.Hd. Sems	Field Screw (2)
06-83-2650 1/4-20x3/8 Hd'less	Brush Holder Set Screws (2)
06-81-3700 8-32x7/8 Oval Hd.	Handle Cover Screws (4)
48-66-4080	Key Holder

SIZE OR PART NO.	DESCRIPTION OF PART
06-81-5800 6-32x5/16 Fil. Hd.Sems	Switch Mtg. Screws (2)
23-86-0110 44D-34	Brush Holder Insul. Washer (2)
23-16-0050 4BF-24	Switch Insulator
06-81-6600 8-32x1 1/4 Fil.Hd. Sems	Field Screw (2)
06-83-2650 1/4-20x3/8 Hd'less	Brush Holder Set Screws (2)
06-81-3700 8-32x7/8 Oval Hd.	Handle Cover Screws (4)
48-66-4080	Key Holder

SIZE OR PART NO.	DESCRIPTION OF PART
06-81-5800 6-32x5/16 Fil. Hd.Sems	Switch Mtg. Screws (2)
23-86-0110 44D-34	Brush Holder Insul. Washer (2)
23-16-0050 4BF-24	Switch Insulator
06-81-6600 8-32x1 1/4 Fil.Hd. Sems	Field Screw (2)
06-83-2650 1/4-20x3/8 Hd'less	Brush Holder Set Screws (2)
06-81-3700 8-32x7/8 Oval Hd.	Handle Cover Screws (4)
48-66-4080	Key Holder

Numbers in brackets indicate number required.