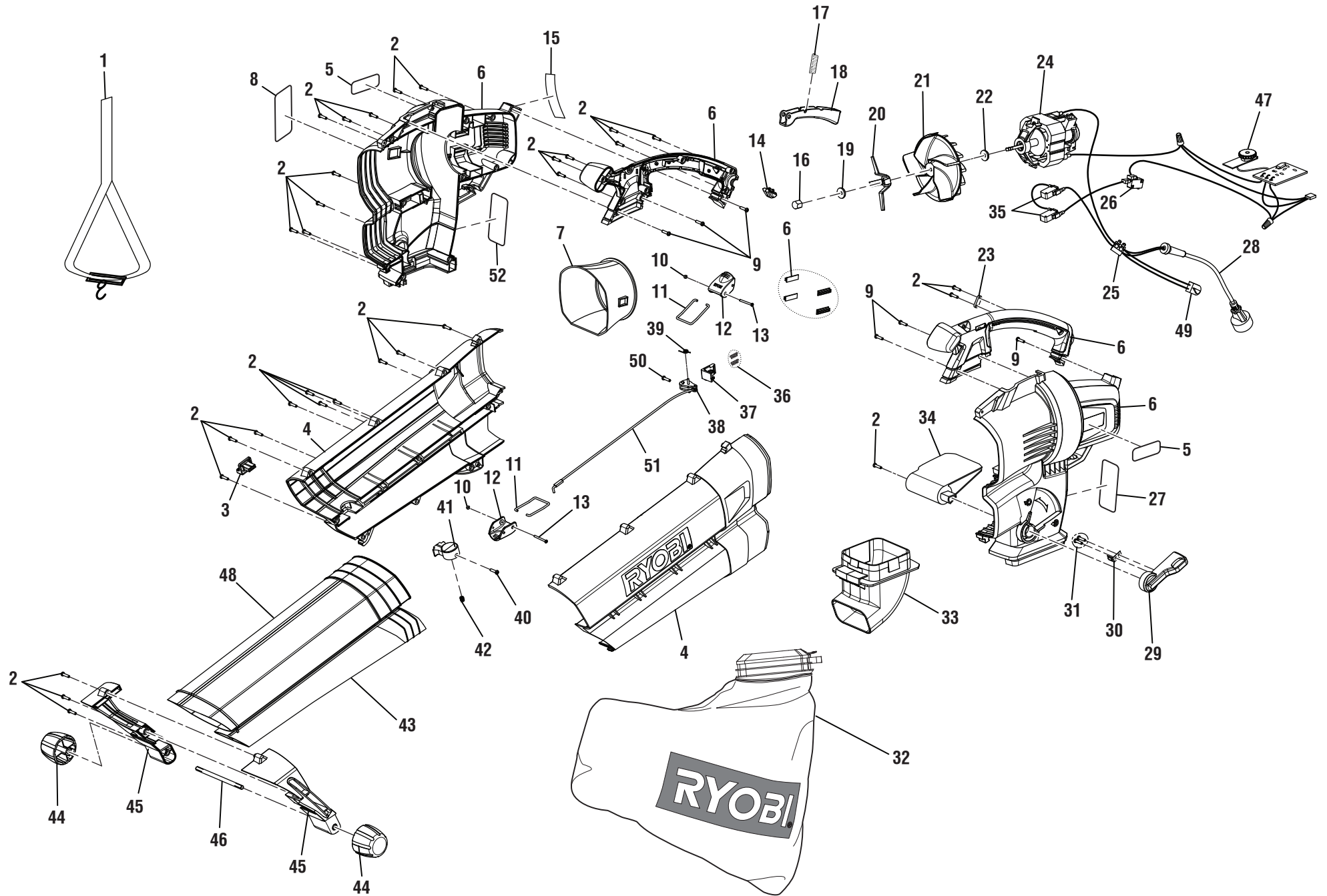


RYOBI RY42110 BLOWER



RYOBI RY42110 BLOWER

The model number will be found on a label attached to the motor housing. Always mention the model number of your **Blower** when requesting service or ordering repair parts.

KEY	P/N	DESCRIPTION	QTY	KEY	P/N	DESCRIPTION	QTY
1	37902144G	Shoulder Strap.....	1	29	34130144G	Quick Change Lever	1
2	3220505G	Screw (M4 x 16 mm).....	31	30	33205144G	Bracket.....	1
3	34120144G	Cap	1	31	3221099G	Screw (M4 x 5 mm).....	2
4	34112144G	Upper Tube Assembly.....	1	32	31102144G	Leaf Bag Assembly	1
5	940114154	Logo Label	2	33	34124144G	Discharge Outlet Elbow	1
6	31108144G	Housing Assembly	1	34	34111144G	Air Deflector	1
7	34104144G	Inner Tube	1	35	36302144G	Micro Switch	2
8	99926001903	Impeller Warning Label	1	36	33404144G	Block Spring	2
9	32202144G	Screw (M4 x 12 mm).....	6	37	34105144G	Slide Block.....	1
10	3221305G	Hex Nut (M3).....	3	38	34106144G	Cam Wheel.....	1
11	33402144G	Latch	2	39	33405144G	Torsion Spring	1
12	34107144G	Clip.....	2	40	3220239G	Screw (M3 x 12 mm).....	1
13	32201144G	Bolt (M3 x 30 mm).....	2	41	34121144G	Lock Block	1
14	34108144G	Indicator Cover	1	42	33401144G	Compression Spring	1
15	99926001902	Icon Label	1	43	34114144G	Blower Tube	1
16	34118144G	Hex Nut (M10).....	1	44	34116144G	Guide Wheel.....	2
17	33403144G	Compression Spring	1	45	34115144G	Front Bracket	1
18	34109144G	Switch Trigger	1	46	33203144G	Wheel Axle	1
19	34119144G	Washer.....	1	47	36201149G	Circuit Board Assembly	1
20	33204144G	Mulching Blade	1	48	34113144G	Vac Tube	1
21	34117144G	Impeller	1	49	36202144G	Live Tool Indicator.....	1
22	33211144G	Bushing.....	1	50	32203144G	Screw (M3 x 12 mm).....	1
23	3410302G	Cord Clamp.....	1	51	33908144G	Steel Wire.....	1
24	36100149G	Motor Assembly.....	1	52	99926001900	Data Label.....	1
25	36404167G	Terminal Block.....	1	Not Shown:			
26	36301329G	Switch	1	988000162	Operator's Manual	1	
27	99926001901	Warning Label	1	3-9-11			
28	31107144G	Cord Assembly.....	1	(Rev:01)			

WARNING: Improper repair of a double insulated tool can result in damage to the double insulation system possibly causing electrical shock or electrocution. Any repairs requiring disassembly of your tool requires safety testing and should only be performed by a Ryobi Authorized Service Center. For the service center nearest you call 1-800-525-2579.