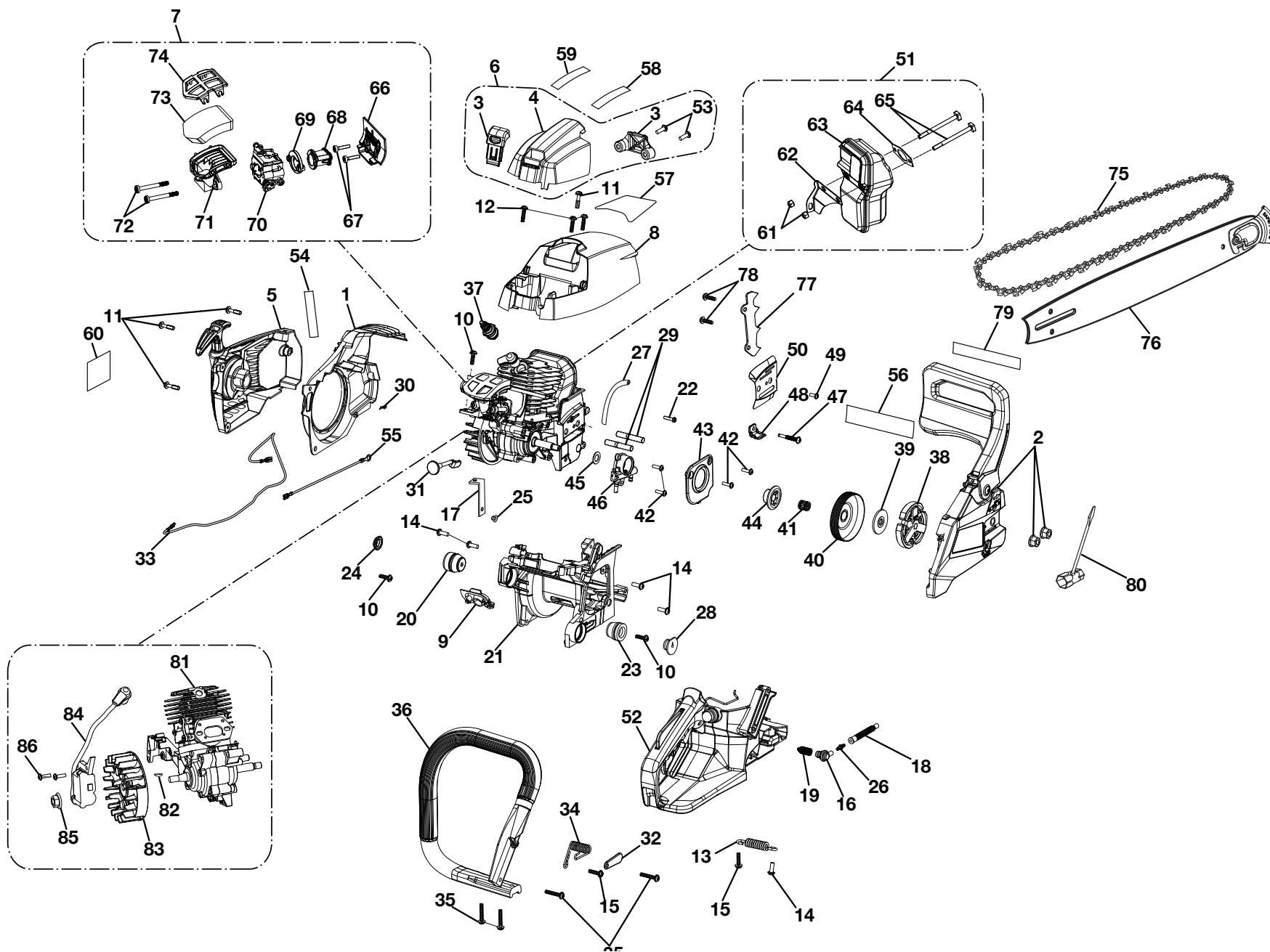


RYOBI
CHAIN SAW
MODEL NO. RY3818
MFG NO. 090382001
REPAIR SHEET

Techtronic Industries Power Equipment

P.O. Box 1288
Anderson, SC 29622
Phone 1-800-860-4050
www.ryobitools.com

RYOBI CHAIN SAW - MODEL NUMBER RY3818



RYOBI CHAIN SAW – MODEL NUMBER RY3818

The model number will be found on a label attached to the motor housing. Always mention the model number in all correspondence regarding your **CHAIN SAW** or when ordering replacement parts.

PARTS LIST

| KEY NO. | PART NUMBER | DESCRIPTION | QTY | KEY NO. | PART NUMBER | DESCRIPTION | QTY |
|---------|-------------|---|-----|---------|-------------|---|-----|
| 1 | 533483001 | Cylinder Baffle | 1 | 21 | 518442006 | Engine Case | 1 |
| 2 | 313866001 | Clutch Cover Assembly (Inc. Key Nos. 56 & 79) | 1 | 22 | 518411001 | Pin (Oil Pump Outlet) | 1 |
| 3 | 314046001 | Carburetor Cover Latch and Bracket Assembly | 1 | 23 | 561426001 | Damper Rubber | 1 |
| 4 | 532595001 | Carburetor Cover Housing | 1 | 24 | 518435001 | Damper Cap | 1 |
| 5 | 313867001 | Starter Housing Assembly (Inc. Key Nos. 60 & 87) | 1 | 25 | 678320001 | Eyelet | 1 |
| 6 | 313868001 | Carburetor Cover Assembly (Inc. Key Nos. 58-59) | 1 | 26 | 518413001 | Joint For Pipe In Comp | 1 |
| 7 | 311457003 | Intake Assembly | 1 | 27 | 563968002 | Oil Pump Rubber Tube (Outlet) | 1 |
| 8 | 313869001 | Cylinder Housing Assembly (Inc. Key No. 57) | 1 | 28 | 518434001 | Damper Cap (T) | 1 |
| 9 | 518417001 | Grommet | 1 | 29 | 660503006 | Bar Stud (5/16-18 x 23.5 mm / 5/16-18 x 18 mm) | 2 |
| 10 | 660918003 | Screw (M5 x 16 mm, T25 Torx Pan Hd.) | 3 | 30 | 631034001 | Hair Pin | 1 |
| 11 | 660637001 | Screw (M5 x 22 mm, T25 Torx Pan Hd.) | 4 | 31 | 518415001 | Choke Rod | 1 |
| 12 | 660918001 | Screw (M5 x 14 mm, T25 Torx Pan Hd.) | 3 | 32 | 678332001 | Damper Plate | 1 |
| 13 | 678321001 | Damper Spring | 1 | 33 | 291894001 | Lead Wire Assembly (Red) | 1 |
| 14 | 660917002 | Screw (M5 x .8 mm, T25 Torx Pan Hd.) | 5 | 34 | 678322001 | Damper Spring | 1 |
| 15 | 660918004 | Screw (M5 x 14 mm, T25 Torx Pan Hd.) | 2 | 35 | 660918002 | Screw (M5 x 27 mm, T25 Torx Pan Hd.) | 4 |
| 16 | 561421001 | Oil Filter Grommet | 1 | 36 | 518691001 | Handle | 1 |
| 17 | 901376002 | Band Stopper | 1 | 37 | 870174005 | ** Spark Plug (BOSCH/WSR6F) | 1 |
| 18 | 561449001 | Pipe In Oil Pump Rubber | 1 | 38 | 310535001 | Clutch | 1 |
| 19 | 678407001 | Cone Spring | 1 | 39 | 678313002 | Thrust Plate | 1 |
| 20 | 561428001 | Rubber Damper | 1 | 40 | 309418001 | Clutch Drum | 1 |
| | | | | 41 | 681933001 | Clutch Drum Needle Bearing | 1 |
| | | | | 42 | 660916003 | Screw (M4 x 14 mm, T20 Torx Pan Hd.) | 4 |
| | | | | 43 | 518414001 | Oil Pump Cover | 1 |
| | | | | 44 | 518865001 | Oil Pump Drive Gear | 1 |
| | | | | 45 | 638289001 | Washer (ID10.2 x OD18 x 1t) | 1 |

** Standard Hardware Item – May Be Purchased Locally

RYOBI CHAIN SAW – MODEL NUMBER RY3818

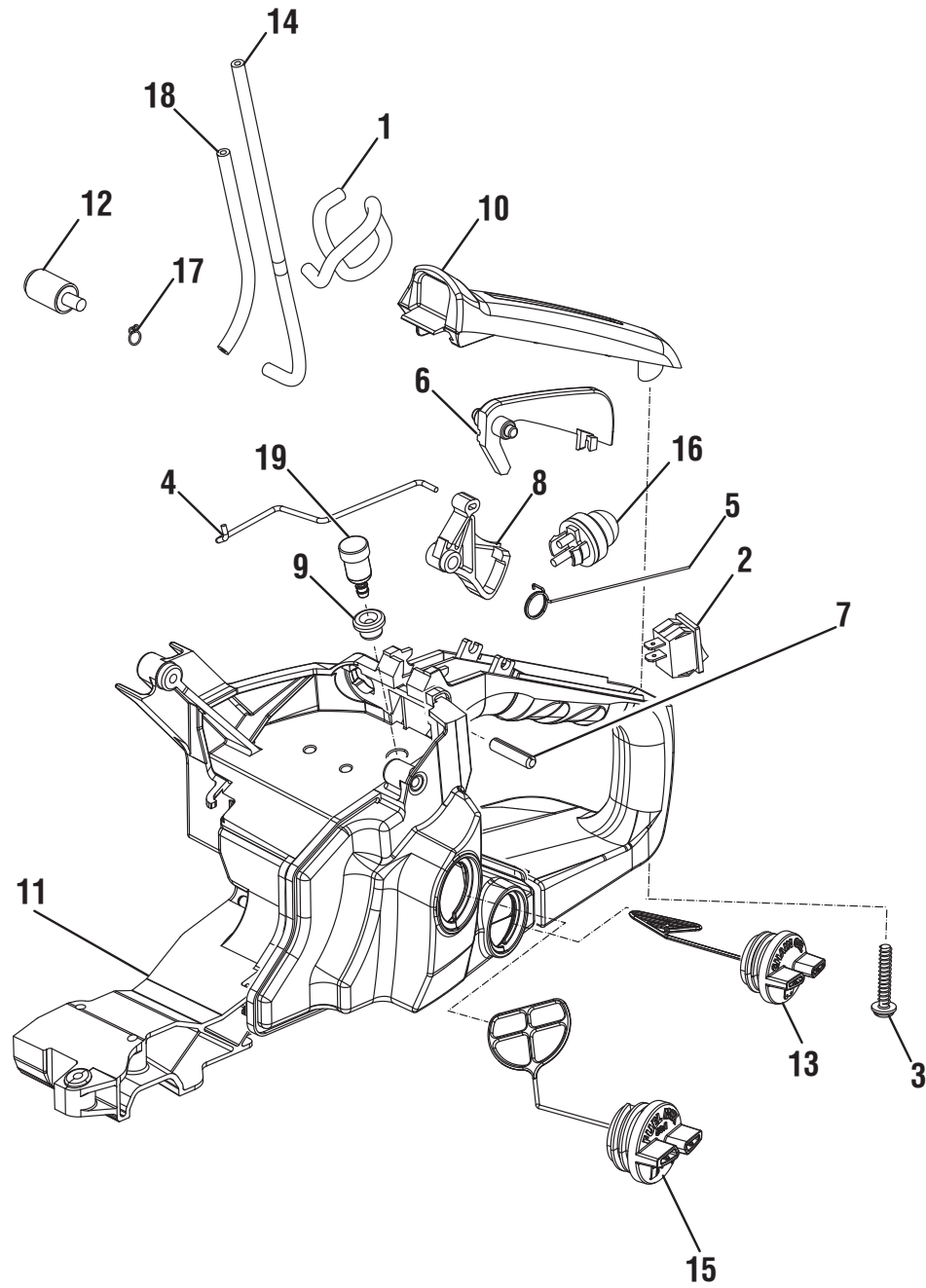
The model number will be found on a label attached to the motor housing. Always mention the model number in all correspondence regarding your **CHAIN SAW** or when ordering replacement parts.

PARTS LIST

| KEY NO. | PART NUMBER | DESCRIPTION | QTY | KEY NO. | PART NUMBER | DESCRIPTION | QTY |
|---------|-------------|--|-----|-------------------|--------------------------------|---|-----|
| 46 | 309516001 | Oil Pump..... | 1 | 69 | 678694002 | Intake Bracket | 1 |
| 47 | 660931001 | Screw (M4 x 33 mm, T25 Torx Pan Hd.)..... | 1 | 70 | 308054203 | Carburetor Assembly..... | 1 |
| 48 | 631035004 | Chain Catcher | 1 | 71 | 518465002 | Air Box Base..... | 1 |
| 49 | 660916001 | Screw (M4 x 12 mm, T20 Torx Pan Hd.)..... | 1 | 72 | 660454015 | Screw (M5 x 44 mm, T25 Torx Hd. Carburetor)..... | 2 |
| 50 | 638309003 | Chain Guard Plate | 1 | 73 | 560873013 | Foam Air Filter | 1 |
| 51 | 311458001 | Exhaust Assembly..... | 1 | 74 | 534173001 | Air Filter Retainer..... | 1 |
| 52 | 307246005 | Chassis & Handle Components | 1 | 75 | 901361003 | 18 in. Chain (3/8LP, 62DL) | 1 |
| 53 | 660922001 | Screw (M4 x 10 mm, T20 Torx Pan Hd.)..... | 2 | 76 | 312655001 | 18 in. Guide Bar Assembly..... | 1 |
| 54 | 940654088 | Combustion Warning Label..... | 1 | 77 | 631039002 | Bucking Spike | 1 |
| 55 | 291893001 | Lead Wire Assembly (Black)..... | 1 | 78 | 660917004 | Screw (M5 x 11 mm., T25 Torx Pan Hd.)..... | 2 |
| 56 | 941009047 | Chain Brake Label (RY3818) | 1 | 79 | 941009045 | Pull To Release Brake Label..... | 1 |
| 57 | 941009044 | Warning Label | 1 | 80 | 631055005 | Combination Wrench..... | 1 |
| 58 | 941010023 | Starting Label (Right)..... | 1 | 81 | 309893007 | Short Block..... | 1 |
| 59 | 941010022 | Starting Label (Left) | 1 | 82 | 690688001 | Woodruff Key..... | 1 |
| 60 | 941009046 | Starting House Label (RY3818) | 1 | 83 | 309001002 | Flywheel Assembly..... | 1 |
| 61 | 678311001 | Nut (M5, Muffler)..... | 2 | 84 | 309266003 | Ignition Assembly | 1 |
| 62 | 638293004 | Muffler Bracket | 1 | 85 | 690689001 | Hex Flange Nut (M8)..... | 1 |
| 63 | 309377002 | Muffler | 1 | 86 | 660916003 | Screw (M4 x 14 mm, T20 Torx Hd.)..... | 2 |
| 64 | 901380001 | Gasket (Muffler) | 1 | Not Shown: | | | |
| 65 | 660917002 | Screw (M5 x 14 mm, T25 Torx Pan Hd.)..... | 2 | 995000353 | Operator's Manual (9600873001) | | |
| 66 | 518864003 | Heat Dam | 1 | 308552005 | Carrying Case | | |
| 67 | 662395001 | Bolt (M9 x 19 mm, T25 Torx Pan Hd.) | 2 | 580464001 | 18 in. Scabbard (RY3818) | | |
| 68 | 570243003 | Intake Boot | 1 | 10-18-18 | (Rev:06) | | |

** Standard Hardware Item – May Be Purchased Locally

RYOBI CHAIN SAW – MODEL NUMBER RY3818



RYOBI CHAIN SAW – MODEL NUMBER RY3818

The model number will be found on a label attached to the motor housing. Always mention the model number in all correspondence regarding your **CHAIN SAW** or when ordering replacement parts.

PARTS LIST

| KEY NO. | PART NUMBER | DESCRIPTION | QTY |
|---------|-------------|---|-----|
| 1 | 570373019 | Fuel Hose (Primer Assembly to Carburetor, 160 mm) | 1 |
| 2 | 760961009 | Switch | 1 |
| 3 | 660918002 | Screw (M5 x 27 mm, T25 Torx Pan Hd.) | 1 |
| 4 | 638295001 | Throttle Rod | 1 |
| 5 | 678325001 | Throttle Spring | 1 |
| 6 | 563968003 | Safety Rocker Arm..... | 1 |
| 7 | 638296001 | Spring Pin | 1 |
| 8 | 518466004 | Trigger | 1 |
| 9 | 561424001 | Grommet..... | 1 |
| 10 | 518429001 | Grip Cover..... | 1 |
| 11 | 308550008 | Handle..... | 1 |
| 12 | 300759005 | Fuel Filter Assembly..... | 1 |
| 13 | 308612006 | Chain Oil Cap..... | 1 |
| 14 | 562967003 | LP-1500 Tubing (205.00 mm)..... | 1 |
| 15 | 308611005 | Fuel Cap Assembly | 1 |
| 16 | 300780002 | Primer Assembly | 1 |
| 17 | 690699001 | Hose Clip | 1 |
| 18 | 570373017 | Fuel Hose (Primer Assembly to Tank, 153 mm)..... | 1 |
| 19 | 308583001 | Fuel Breather Assembly | 1 |