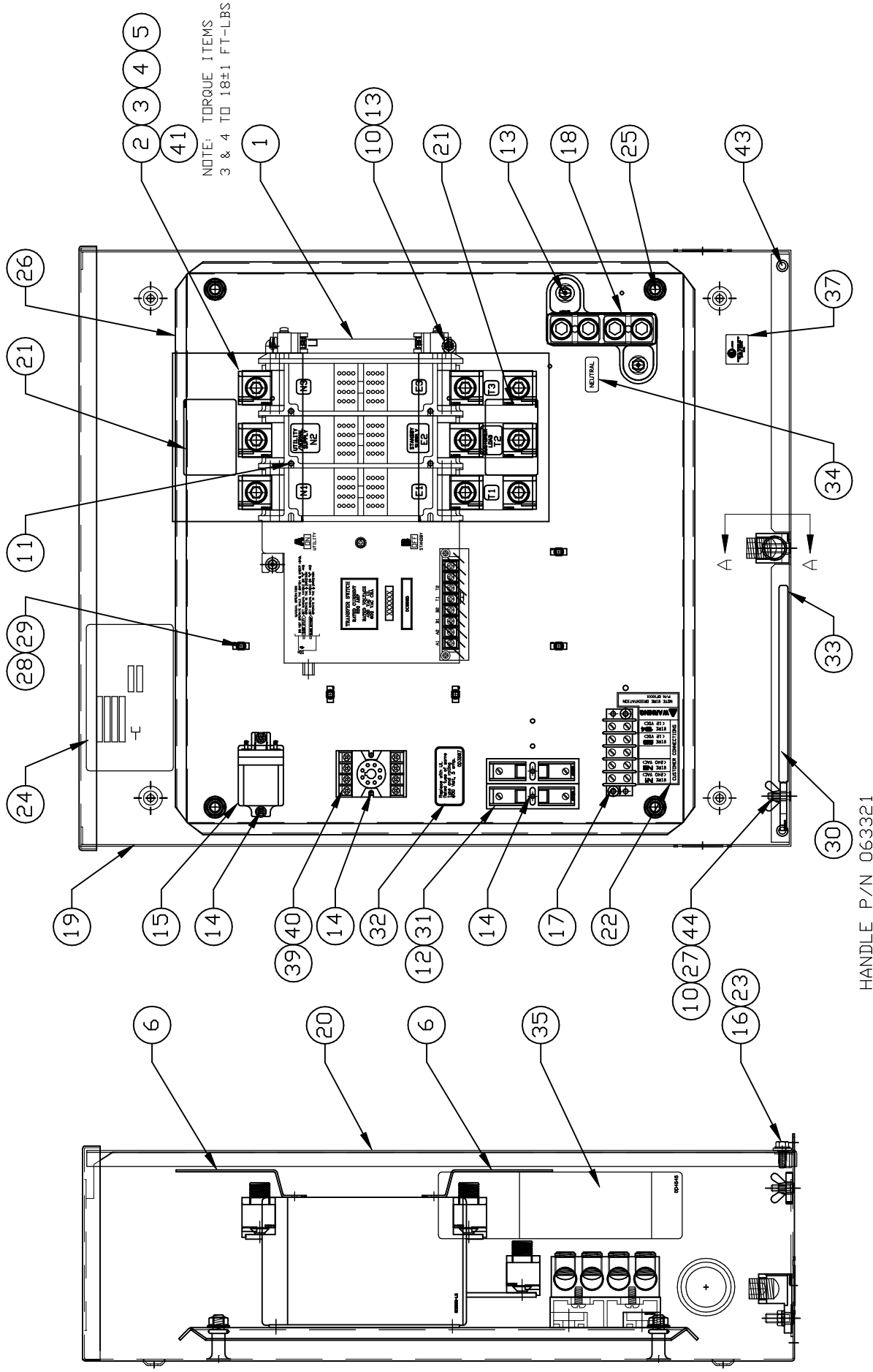


# GROUP C



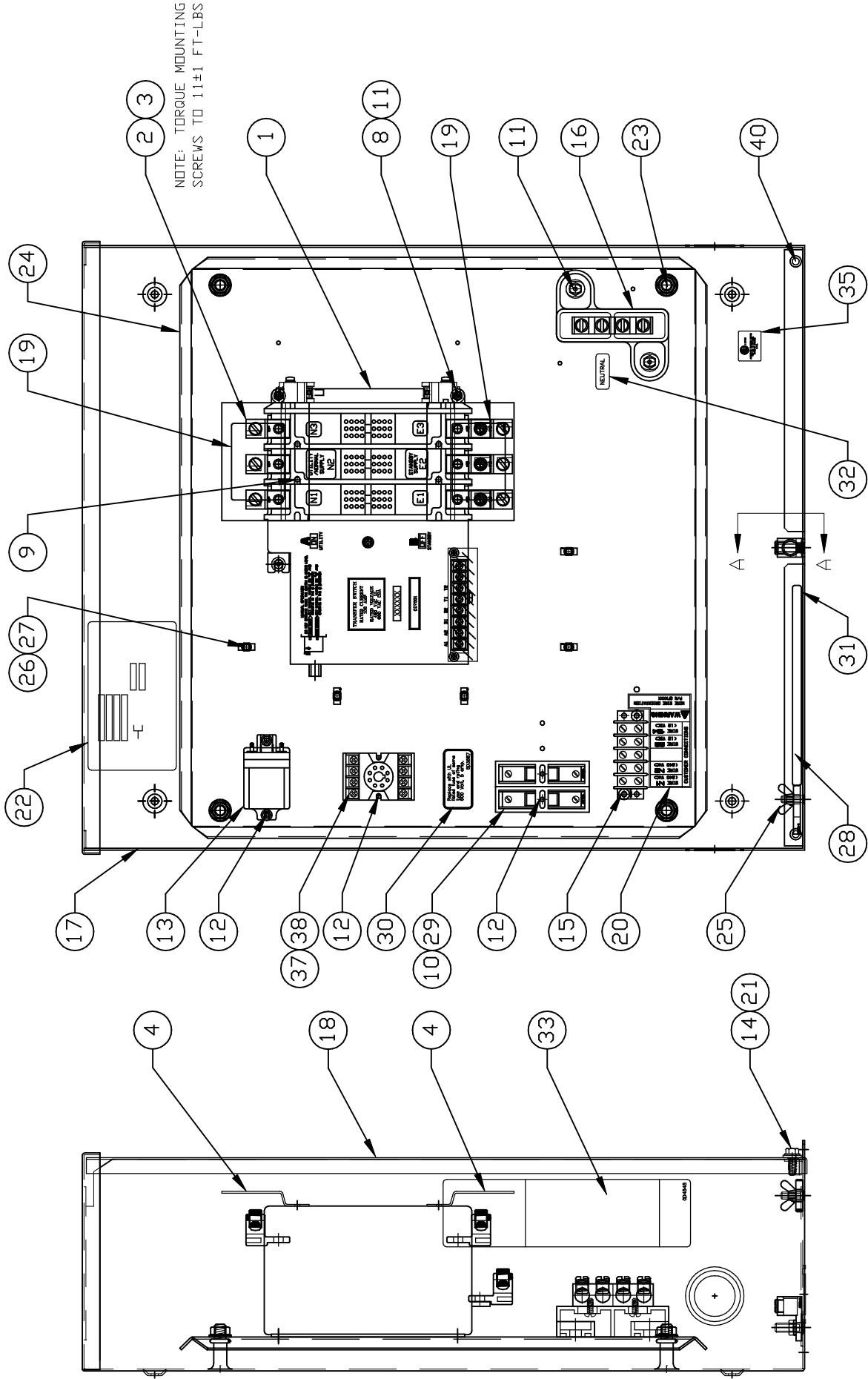
EXPLODED VIEW:  
ASSY TRANSFER SW 200A 600V 3P 3R  
DRAWING #: 0E4312A

APPLICABLE TO:

ITEM	PART #	QTY.	DESCRIPTION
1	0C8885	1	XFER SW-W 200A600V3P
2	0A9949	9	LUG SLDLSS 400-#4X1/4-20 CU7AL
3	0C4896	9	SCREW FHM M8-1.25 X 20MM CR
4	067989	9	NUT LOCK FL M8-1.25 YEL CHR
5	026902	7	SCREW HHTT #8-32 X 1/4 CZ
6	0C7907D	2	COVER LUG 3P 150/200AMP
7	045771	1	NUT HEX M8-1.25 G8 CLEAR ZINC
8	057329	1	LUG SLDLSS 350-#6X13/32 AL/CU
9	027482	1	WASHER SHAKEPROOF EXT 5/16 STL
10	022097	4	WASHER LOCK M6-1/4
11	0C8275	4	SCREW PPHM DSEMS M4-7 X 10 ZNC
(4) 12	073591	2	FUSE HOLDER
13	090388	5	SCREW HHTT M6-1.0 X 12 ZINC
14	0A1495	6	SCREW HHTT M4-0.7 X 10 BP
(4) 15	063617	1	RELAY PNL 12VDC DPDT 10A@240VA
16	085296	2	SCREW HHC 1/4-20 X 1/2 SS
17	0A1661	2	RIVET POP .156 X .675 AL
18	0C4449A	1	ASS'Y-NTRL BL150-200A
19	0E2865	1	WELDMENT, TRANSFER SWITCH BOX
20	0D3718	1	COVER, TRANSFER SWITCH BOX
21	0C8308	2	DECAL TERMINAL SHOCK HAZARD
22	0C2262	1	DECAL TERMINAL STRIP
23	0F6165	2	WASHER M6 NYLON
24	PER MODEL	1	DECAL DATA XFER SW
25	064101	4	NUT LOCK FL 3/8-16
26	0E2866	1	SUBPLT 200A TS 3R
27	087680	1	NUT WING M6-1.0
28	063378	5	HOLDER CABLE TIE
29	064761	5	TIE WRAP UL 5.6 X .10 NATL
30	063321	1	HANDLE XFER SWITCH 1-400A
31	073590A	2	FUSE 5A X BUSS
32	0D3587	1	DECAL, FUSE REPLACEMENT
33	067210A	1	DECAL GROUND LUG
34	0A9457	1	DECAL NEUTRAL
35	0D4545	1	DECAL, MANUAL OPERATION
(1) 36	0E4307	1	DECAL, TEST SEQUENCE 2P TS 3R
37	081221	1	DECAL-UL LIST HSB
38	022129	1	WASHER LOCK M8-5/16
39	063306	1	3-PHASE POWER MONITR
(4) 40	066972	1	SOCKET RELAY OCTAL 8P 300V-10A
(2) 41	0E4358	2	DECAL, LUG TORQUE INFO
(3) 42	PER MODEL	1	DECAL TRANSFER SWITCH RTS
43	058000E	2	NUT TRIC 1/4-20 X .525
44	022473	1	WASHER FLAT 1/4-M6 ZINC

- (1) CENTER DECAL ON INSIDE OF THE COVER (ITEM #20)
- (2) INSTALL ACROSS E & N TERMINALS
- (3) INSTALL ON FRONT OF THE COVER (ITEM #20)
- (4) STRUCTURED IN HARNESS (P/N 0F6796)

# GROUP C



EXPLODED VIEW:  
ASSY XFRSW 100A 600V 3P 3R  
DRAWING #: 0F5582A

APPLICABLE TO:

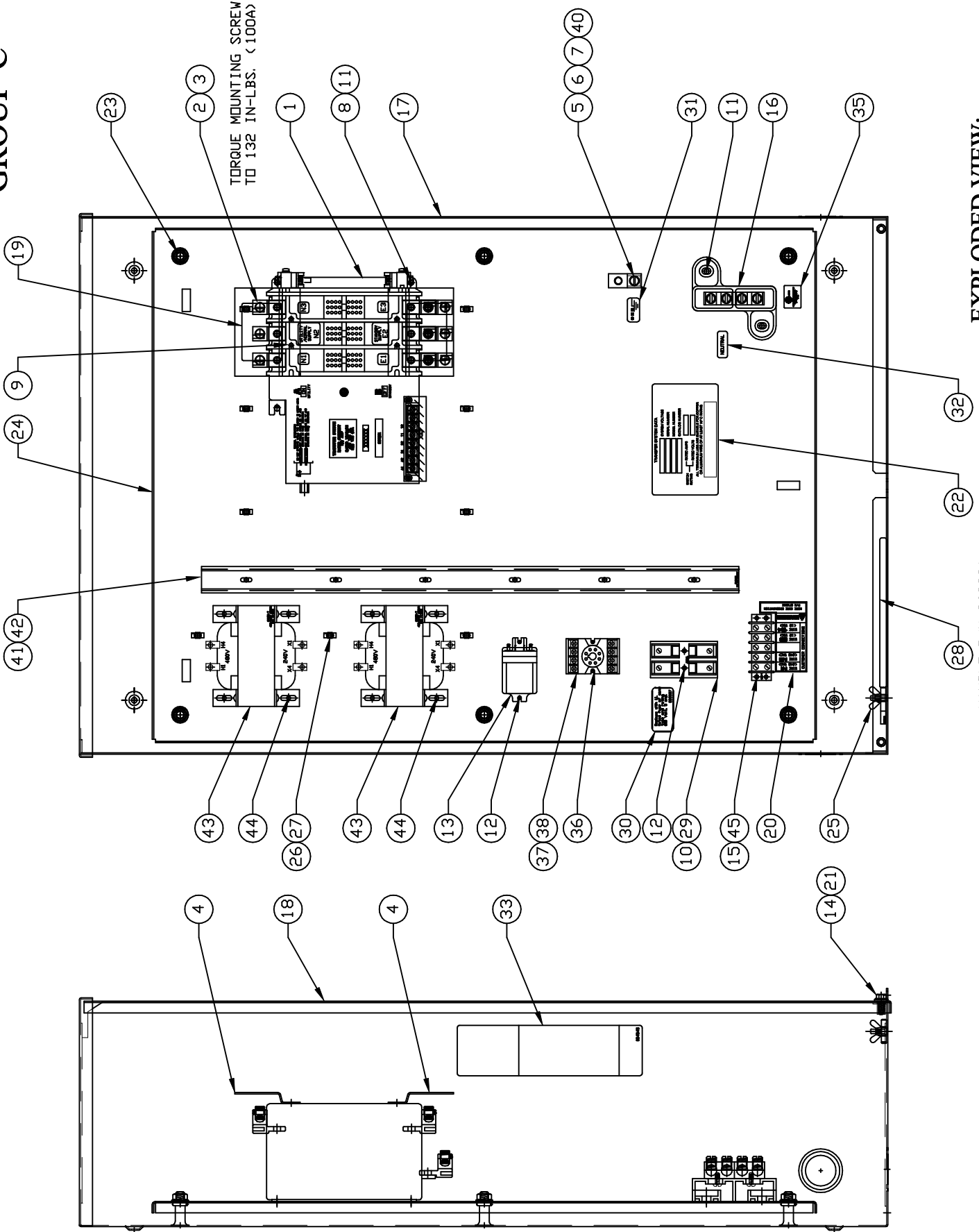
ITEM	PART #	QTY.	DESCRIPTION
1	0D7301	1	XFER SW-W 100A600V3P
2	099084	9	LUG SLDLSS 2/0-#6 X 21/64 AL/CU
3	026902	7	SCREW HHTT #8-32 X 1/4 CZ
4	0C7907B	2	COVER LUG 3P 100AMP
5	045771	1	NUT HEX M8-1.25 G8 CLEAR ZINC
6	062684	1	LUG SLDLSS 2/0-#12 X 11/32 CU
7	027482	1	WASHER SHAKEPROOF EXT 5/16 STL
8	022097	3	WASHER LOCK M6-1/4
9	0C8275	4	SCREW PPHM DSEMS M4-7 X 10 ZNC
(2) 10	073591	2	FUSE HOLDER
11	090388	5	SCREW HHTT M6-1.0 X 12 ZINC
12	0A1495	6	SCREW HHTT M4-0.7 X 10 BP
(2) 13	063617	1	RELAY PNL 12VDC DPDT 10A@240VA
14	085296	2	SCREW HHC 1/4-20 X 1/2 SS
15	0A1661	2	RIVET POP .156 X .675 AL
16	0C4449	1	ASSY NEUTRAL BLOCK 100A
17	0E2865	1	WELDMENT TRANSFER SWITCH BOX
18	0D3718	1	COVER TRANSFER SWITCH BOX
19	0C8308	2	DECAL TERMINAL SHOCK HAZARD
20	0C2262	1	DECAL TERMINAL STRIP
21	0F6165	2	WASHER M6 NYLON
22	PER MODEL	1	DECAL DATA XFER SW
23	064101	4	NUT HEX FL WHIZ 3/8-16
24	0E2866	1	SUBPLATE 200A TS 3R
25	087680	1	NUT WING M6-1.0
26	063378	5	HOLDER CABLE TIE
27	064761	5	TIE WRAP UL 5.6 X .10 NATL
28	063321	1	HANDLE XFER SWITCH 1-400A
29	073590A	2	FUSE 5A X BUSS
30	0D3587	1	DECAL FUSE REPLACEMENT
31	067210A	1	DECAL GROUND LUG
32	0A9457	1	DECAL NEUTRAL
33	0D4545	1	DECAL MANUAL OPERATION
(1) 34	0F6723	1	DECAL TEST SEQUENCE 2P TS 3R
35	081221	1	DECAL-UL LIST HSB
36	022129	1	WASHER LOCK M8-5/16
37	063306	1	POWER MONITOR 3-PHASE 160-240V
(2) 38	066972	1	SOCKET RELAY OCTAL 8P 300V-10A
(3) 39	0F6521	1	DECAL TRANSFER SWITCH RTS
40	058000E	2	NUT TRIC 1/4-20 X .525

(1) CENTER DECAL ON INSIDE OF THE COVER (ITEM #18)

(2) STRUCTURE IN HARNESS (P/N 0F6796)

(3) INSTALL ON FRONT OF THE COVER (ITEM #18)

# GROUP C



EXPLODED VIEW:  
 ASSEMBLY 100A 480V TRANSFER SWITCH  
 DRAWING #: 0F6101A

HANDLE P/N 063321  
 SUPPLIED W/SWITCH  
 PAGE 1 OF 2

REVISION: H-3227-F  
 DATE: 10/9/08

EXPLODED VIEW: ASSEMBLY 100A 480V TRANSFER SWITCH  
 DRAWING #: 0F6101A

GROUP C

APPLICABLE TO:

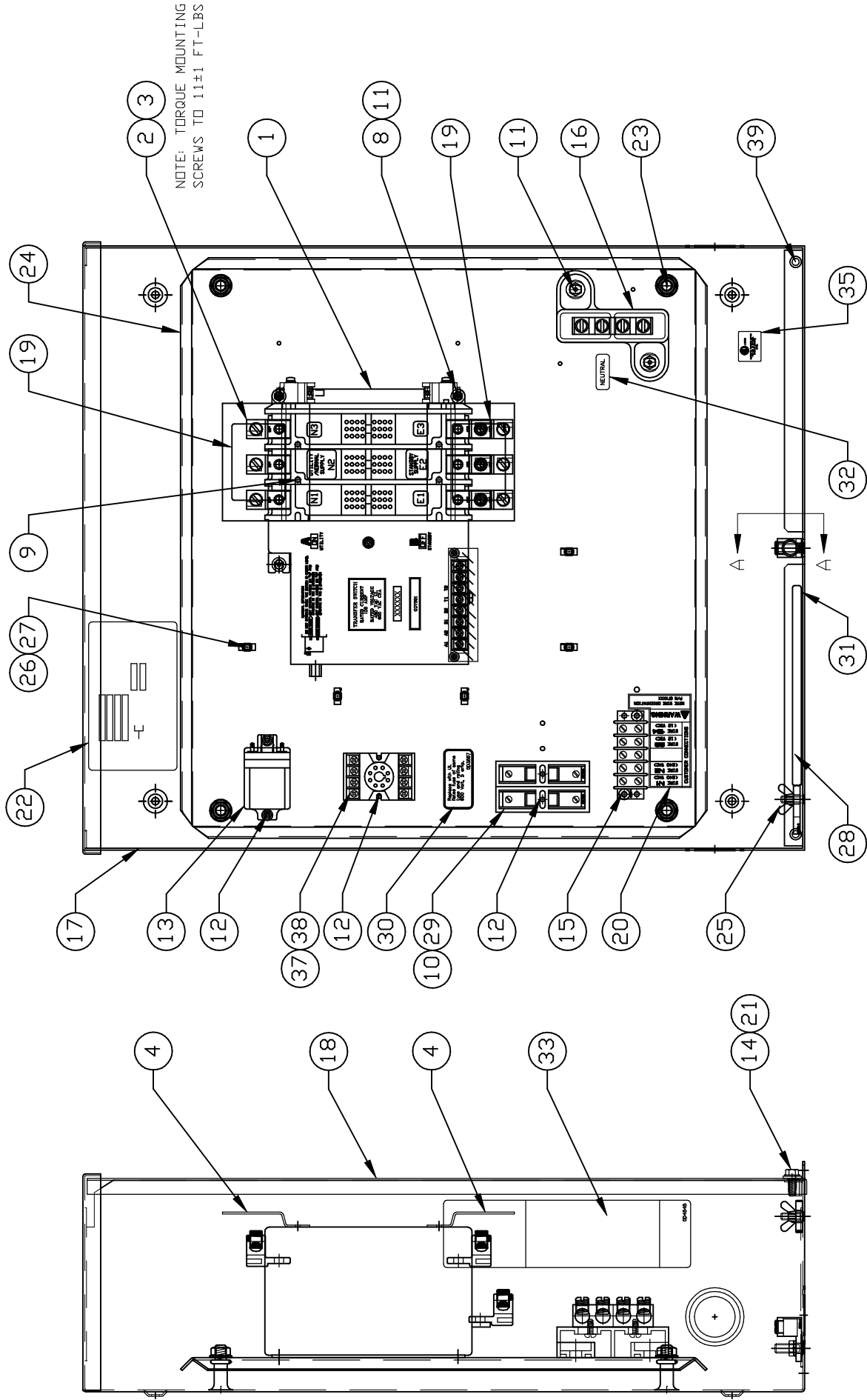
ITEM	PART #	QTY.	DESCRIPTION
1	0D7301	1	XFER SW-W 100A600V3P
2	099084	9	LUG SLDLSS 2/0-#6 X 21/64 AL/CU
3	026902	5	SCREW HHTT #8-32 X 1/4 CZ
4	0C7907B	2	COVER LUG 3P 100AMP
5	024526	1	SCREW HHTT 5/16-18 X 3/4 CZ
6	062684	1	LUG SLDLSS 2/0-#12 X 11/32 CU
7	027482	1	WASHER SHAKEPROOF EXT 5/16 STL
8	022097	3	WASHER LOCK M6-1/4
9	0C8275	4	SCREW PPHM DSEMS M4-7 X 10 ZNC
10 **	0D2806	1	FUSEBLOCK 30A 600V 2POS W/SQ
11	090388	5	SCREW HHTT M6-1.0 X 12 ZINC
12	0A1495	4	SCREW HHTT M4-0.7 X 10 BP
13 **	063617	1	RELAY PNL 12VDC DPDT 10A@240VA
14	047411	2	SCREW HHC M6-1.0 X 16 G8.8
15	0A1661	2	RIVET POP .156 X .675 AL
16	0C4449	1	ASSY NEUTRAL BLOCK 100A
17	0F59350ST14	1	ENCL RTS 3R 24X36X10 08GRAY
18	0F59390ST14	1	COVER, NEMA 3R XFER SW 08GRAY
19	0C8308	2	DECAL TERMINAL SHOCK HAZARD
20	0C2262	1	DECAL TERMINAL STRIP
21	0F6165	4	WASHER M6 NYLON
22	0G5968K	1	DECAL,XFER SW NON 100A 277/480
23	064101	6	NUT HEX FL WHIZ 3/8-16
24	0F59400ST14	1	SUBPLATE 24/36 ENCL RTS 08GRAY
25	087680	1	NUT WING M6-1.0
26	063378	8	HOLDER CABLE TIE
27	064761	8	TIE WRAP UL 5.6 X .10 NATL
28	063321	1	HANDLE XFER SWITCH 1-400A
29	073590A	2	FUSE 5A X BUSS
30	0D3587	1	DECAL FUSE REPLACEMENT
31	067210A	1	DECAL GROUND LUG
32	0A9457	1	DECAL NEUTRAL
33	0D4545	1	DECAL MANUAL OPERATION
34 *	0F6723	1	DECAL TEST SEQUENCE 2P TS 3R
35	081221	1	DECAL-UL LIST HSB
36	0A2284	2	SCREW SWAGE #8-32 X 1/2 ZYC
37	063306	1	POWER MONITOR 3-PHASE 208Y
38 **	0F6760	1	SOCKET RELAY 8P 600V-10A
39 ***	0F6521	1	DECAL TRANSFER SWITCH RTS
40	022129	1	WASHER LOCK M8-5/16
41	091472	1	DUCT WIRING 1 X 1.5 (24" LG)
42	091472A	1	COVER WIRE DUCT 1 IN (24" LG)
43	064126	2	TRANSFRM 240/480V-120/240V
44	056893	8	SCREW CRIMPTITE 10-24 X 1/2
45 **	048850	1	BLOCK TERM 20A 5 X 6 X 1100V
46	0F5985	1	HARNESS 100/200A 480V RTS

\* CENTER DECAL ON INSIDE OF THE COVER (ITEM #18)

\*\* ITEMS INCLUDED WITH HARNESS

\*\*\* INSTALL ON FRONT OF THE COVER (ITEM #18)

# GROUP C



EXPLODED VIEW:  
 ASSEMBLY T/S N3R 100A 120/208V PVT  
 DRAWING #: 0G2984A

APPLICABLE TO:

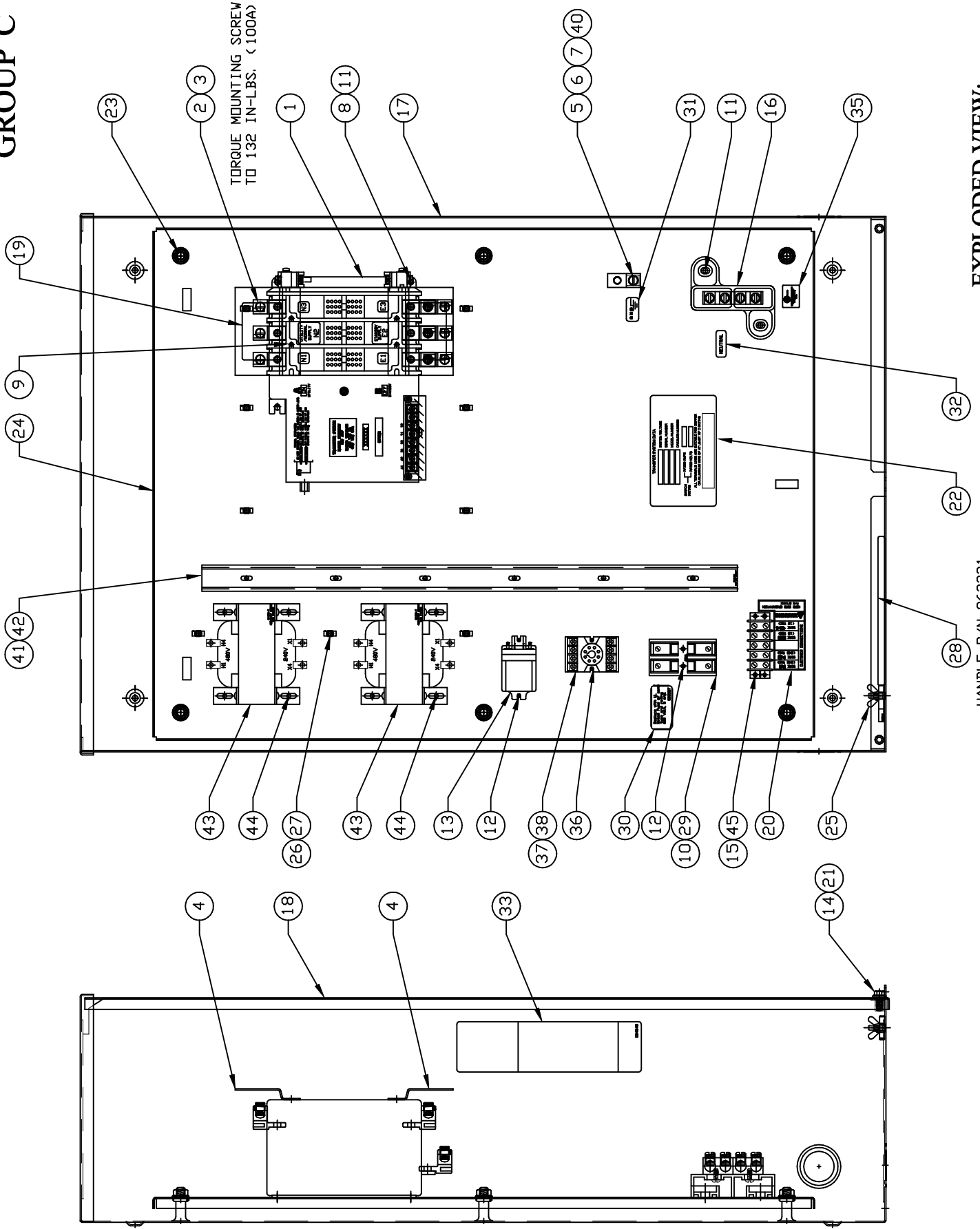
ITEM	PART #	QTY.	DESCRIPTION
1	0D7301	1	XFER SW-W 100A600V3P
2	099084	9	LUG SLDLSS 2/0-#6 X 21/64 AL/CU
3	026902	7	SCREW HHTT #8-32 X 1/4 CZ
4	0C7907B	2	COVER LUG 3P 100AMP
5	045771	1	NUT HEX M8-1.25 G8 CLEAR ZINC
6	062684	1	LUG SLDLSS 2/0-#12 X 11/32 CU
7	027482	1	WASHER SHAKEPROOF EXT 5/16 STL
8	022097	3	WASHER LOCK M6-1/4
9	0C8275	4	SCREW PPHM DSEMS M4-7 X 10 ZNC
(2) 10	073591	2	FUSE HOLDER
11	090388	5	SCREW HHTT M6-1.0 X 12 ZINC
12	0A1495	6	SCREW HHTT M4-0.7 X 10 BP
(2) 13	063617	1	RELAY PNL 12VDC DPDT 10A@240VA
14	085296	2	SCREW HHC 1/4-20 X 1/2 SS
15	0A1661	2	RIVET POP .156 X .675 AL
16	0C4449	1	ASSY NEUTRAL BLOCK 100A
17	0E2865	1	WELDMENT TRANSFER SWITCH BOX
18	0D3718	1	COVER TRANSFER SWITCH BOX
19	0C8308	2	DECAL TERMINAL SHOCK HAZARD
20	0C2262	1	DECAL TERMINAL STRIP
21	0F6165	2	WASHER M6 NYLON
22	PER MODEL	1	DECAL DATA XFER SW
23	064101	4	NUT HEX FL WHIZ 3/8-16
24	0E2866	1	SUBPLATE 200A TS 3R
25	087680	1	NUT WING M6-1.0
26	063378	5	HOLDER CABLE TIE
27	064761	5	TIE WRAP UL 5.6 X .10 NATL
28	063321	1	HANDLE XFER SWITCH 1-400A
29	073590A	2	FUSE 5A X BUSS
30	0D3587	1	DECAL FUSE REPLACEMENT
31	067210A	1	DECAL GROUND LUG
32	0A9457	1	DECAL NEUTRAL
33	0D4545	1	DECAL MANUAL OPERATION
(1) 34	0F6723	1	DECAL TEST SEQUENCE 2P TS 3R
35	081221	1	DECAL-UL LIST HSB
36	022129	1	WASHER LOCK M8-5/16
37	063306	1	POWER MONITOR 3-PHASE 160-240V
(2) 38	066972	1	SOCKET RELAY OCTAL 8P 300V-10A
49	058000E	2	NUT TRIC 1/4-20 X .525

(1) CENTER DECAL ON INSIDE OF THE COVER (ITEM #18)

(2) STRUCTURE IN HARNESS (P/N 0F6796)



# GROUP C



EXPLODED VIEW:  
 ASSEMBLY 100A 480V TRANSFER SWITCH  
 DRAWING #: 0G2985A

HANDLE P/N 063321  
 SUPPLIED W/SWITCH

EXPLODED VIEW: ASSEMBLY 100A 480V TRANSFER SWITCH  
 DRAWING #: 0G2985A

GROUP C

APPLICABLE TO:

ITEM	PART #	QTY.	DESCRIPTION
1	0D7301	1	XFER SW-W 100A600V3P
2	099084	9	LUG SLDLSS 2/0-#6 X 2 1/64 AL/CU
3	026902	5	SCREW HHTT #8-32 X 1/4 CZ
4	0C7907B	2	COVER LUG 3P 100AMP
5	024526	1	SCREW HHTT 5/16-18 X 3/4 CZ
6	062684	1	LUG SLDLSS 2/0-#12 X 11/32 CU
7	027482	1	WASHER SHAKEPROOF EXT 5/16 STL
8	022097	3	WASHER LOCK M6-1/4
9	0C8275	4	SCREW PPHM DSEMS M4-7 X 10 ZNC
(2) 10	0D2806	1	FUSEBLOCK 30A 600V 2POS W/SQ
11	090388	5	SCREW HHTT M6-1.0 X 12 ZINC
12	0A1495	4	SCREW HHTT M4-0.7 X 10 BP
(2) 13	063617	1	RELAY PNL 12VDC DPDT 10A@240VA
14	047411	2	SCREW HHC M6-1.0 X 16 G8.8
15	0A1661	2	RIVET POP .156 X .675 AL
16	0C4449	1	ASSY NEUTRAL BLOCK 100A
17	0F59350ST14	1	ENCL RTS 3R 24X36X10 08GRAY
18	0F59390ST14	1	COVER, NEMA 3R XFER SW 08GRAY
19	0C8308	2	DECAL TERMINAL SHOCK HAZARD
20	0C2262	1	DECAL TERMINAL STRIP
21	0F6165	4	WASHER M6 NYLON
22	PER MODEL	1	DECAL DATA XFER SW
23	064101	6	NUT HEX FL WHIZ 3/8-16
24	0F59400ST14	1	SUBPLATE 24/36 ENCL RTS 08GRAY
25	087680	1	NUT WING M6-1.0
26	063378	8	HOLDER CABLE TIE
27	064761	8	TIE WRAP UL 5.6 X .10 NATL
28	063321	1	HANDLE XFER SWITCH 1-400A
29	073590A	2	FUSE 5A X BUSS
30	0D3587	1	DECAL FUSE REPLACEMENT
31	067210A	1	DECAL GROUND LUG
32	0A9457	1	DECAL NEUTRAL
33	0D4545	1	DECAL MANUAL OPERATION
(1) 34	0F6723	1	DECAL TEST SEQUENCE 2P TS 3R
35	081221	1	DECAL-UL LIST HSB
36	0A2284	2	SCREW SWAGE #8-32 X 1/2 ZYC
37	063306	1	POWER MONITOR 3-PHASE 208Y
(2) 38	0F6760	1	SOCKET RELAY 8P 600V-10A
40	022129	1	WASHER LOCK M8-5/16
41	091472	1	DUCT WIRING 1 X 1.5 (24" LG)
42	091472A	1	COVER WIRE DUCT 1 IN (24" LG)
43	064126	2	TRANSFRM 240/480V-120/240V
44	056893	8	SCREW CRIMPTITE 10-24 X 1/2
(2) 45	048850	1	BLOCK TERM 20A 5 X 6 X 1100V
46	0F5985	1	HARNESS 100/200A 480V RTS (NOT SHOWN)

(1) CENTER DECAL ON INSIDE OF THE COVER (ITEM #18)

(2) ITEMS INCLUDED WITH HARNESS



APPLICABLE TO:

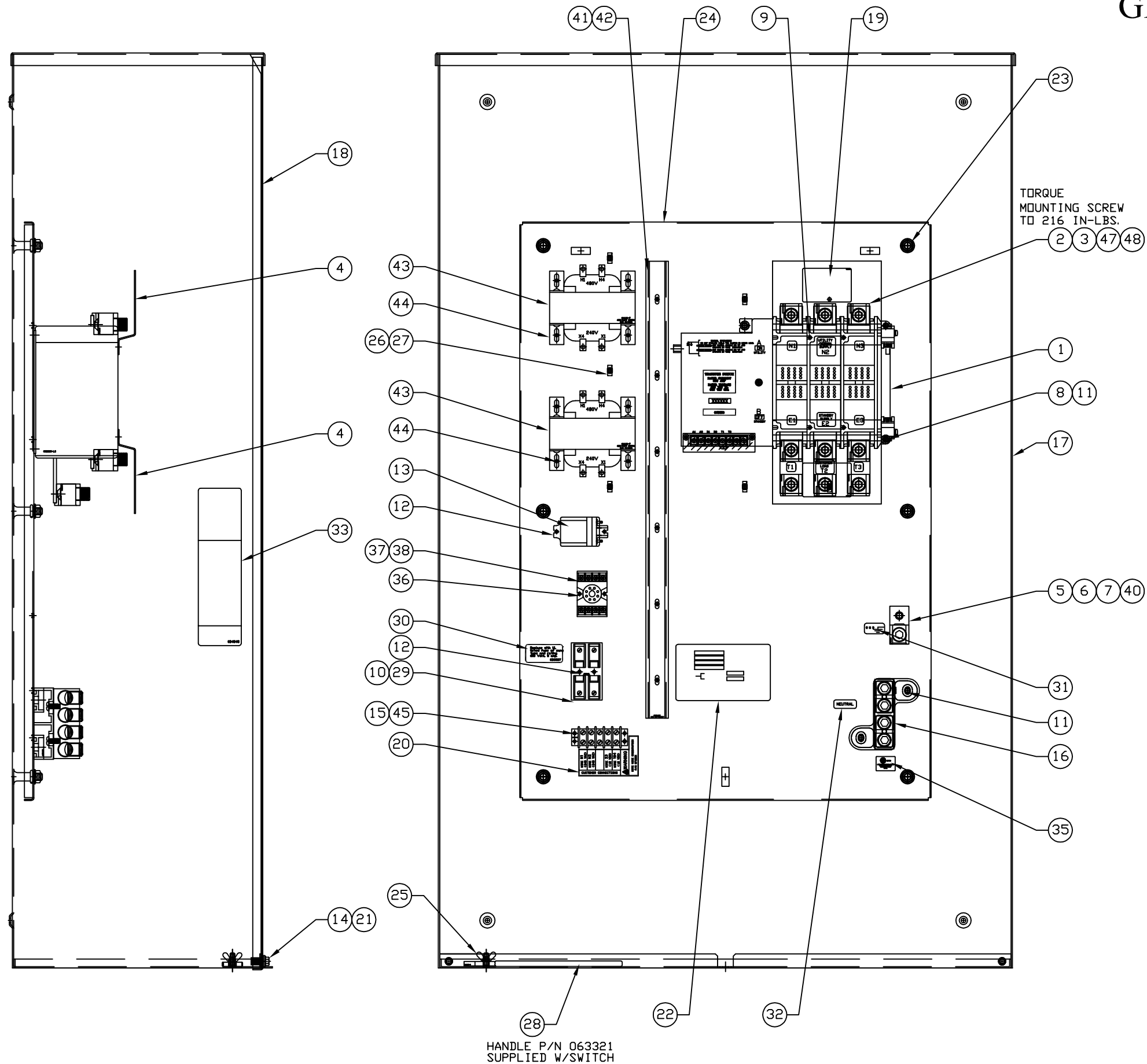
ITEM	PART #	QTY.	DESCRIPTION
1	0D7301	1	XFER SW-W 100A600V3P
2	099084	9	LUG SLDLSS 2/0-#6 X 21/64 AL/CU
3	026902	7	SCREW HHTT #8-32 X 1/4 CZ
4	0C7907B	2	COVER LUG 3P 100AMP
5	045771	1	NUT HEX M8-1.25 G8 CLEAR ZINC
6	062684	1	LUG SLDLSS 2/0-#12 X 11/32 CU
7	027482	1	WASHER SHAKEPROOF EXT 5/16 STL
8	022097	3	WASHER LOCK M6-1/4
9	0C8275	4	SCREW PPHM DSEMS M4-7 X 10 ZNC
(2) 10	073591	2	FUSE HOLDER
11	090388	5	SCREW HHTT M6-1.0 X 12 ZINC
12	0A1495	6	SCREW HHTT M4-0.7 X 10 BP
(2) 13	063617	1	RELAY PNL 12VDC DPDT 10A@240VA
14	085296	2	SCREW HHC 1/4-20 X 1/2 SS
15	0A1661	2	RIVET POP .156 X .675 AL
16	0C4449	1	ASSY NEUTRAL BLOCK 100A
17	0E2865	1	WELDMENT TRANSFER SWITCH BOX
18	0D3718	1	COVER TRANSFER SWITCH BOX
19	0C8308	2	DECAL TERMINAL SHOCK HAZARD
20	0C2262	1	DECAL TERMINAL STRIP
21	0F6165	2	WASHER M6 NYLON
(3) 22	0G5985L	1	DECAL XFRSW NON 100A 120/240
	0G5968G	1	DECAL,XFER SW NON 100A 120/240
23	064101	4	NUT HEX FL WHIZ 3/8-16
24	0E2866	1	SUBPLATE 200A TS 3R
25	087680	1	NUT WING M6-1.0
26	063378	5	HOLDER CABLE TIE
27	064761	5	TIE WRAP UL 5.6 X .10 NATL
28	063321	1	HANDLE XFER SWITCH 1-400A
29	073590A	2	FUSE 5A X BUSS
30	0D3587	1	DECAL FUSE REPLACEMENT
31	067210A	1	DECAL GROUND LUG
32	0A9457	1	DECAL NEUTRAL
33	0D4545	1	DECAL MANUAL OPERATION
(1) 34	0F6723	1	DECAL TEST SEQUENCE 2P TS 3R
35	081221	1	DECAL-UL LIST HSB
36	022129	1	WASHER LOCK M8-5/16
37	063306	1	POWER MONITOR 3-PHASE 160-240V
(2) 38	066972	1	SOCKET RELAY OCTAL 8P 300V-10A
39	058000E	2	NUT TRIC 1/4-20 X .525

(1) CENTER DECAL ON INSIDE OF THE COVER (ITEM #18)

(2) STRUCTURE IN HARNESS (P/N 0F6796)

(3) PER MODEL

# GROUP C



REVISION: CN-0017710-E  
DATE: 7/3/18

EXPLODED VIEW:  
200A 480V TRANSFER SWITCH  
DRAWING #: 0H1569A

## EXPLODED VIEW: 200A 480V TRANSFER SWITCH

DRAWING #: 0H1569A

GROUP C

APPLICABLE TO:

ITEM	PART #	QTY.	DESCRIPTION
1	0C8885	1	XFER SW-W 200A600V 3P
2	0A9949	9	LUG SLDLSS 400-#4 X 1/4-20 CU7AL
3	026902	5	SCREW HHTT #8-32 X 1/4 CZ
4	0C7907D	2	COVER LUG 3P 150/200AMP
5	024526	1	SCREW HHTT 5/16-18 X 3/4 CZ
6	057329	1	LUG SLDLSS 350-#6 X 13/32 AL/CU
7	027482	1	WASHER SHAKEPROOF EXT 5/16 STL
8	022097	3	WASHER LOCK M6-1/4
9	0C8275	4	SCREW PPHM DSEMS M4-7 X 10 ZNC
10 **	0D2806	1	FUSEBLOCK 30A 600V 2 POS W/SQ
11	090388	5	SCREW HHTT M6-1.0 X 12 ZINC
12	0A1495	4	SCREW HHTT M4-0.7 X 10 BP
13 **	063617	1	RELAY PNL 12VDC DPDT 10A@240VA
14	0C2454	2	SCREW THF M6-1 X 16 N WA Z/JS
15	0A1661	2	RIVET POP .156 X .675 AL
16	0C4449A	1	ASSY NEUTRAL BL150-200A
17	0H15660ST14	1	WELDMENT 3R 200AMP XFER 14GRY
18	0F59480ST14	1	COVER 3R 200A XFER SW 08GRAY
19	0C8308	2	DECAL TERMINAL SHOCK HAZARD
20	0C2262	1	DECAL TERMINAL STRIP
21	022264	4	WASHER LOCK #8-M4
22	PER MODEL	1	DECAL,XFER SW NON 200A 277/480
23	064101	6	NUT HEX FL WHIZ 3/8-16
24	0H15570ST14	1	SUBPLATE 3R 200AMP XFER 14GRY
25	087680	1	NUT WING M6-1.0
26	063378	6	HOLDER CABLE TIE
27	064761	6	TIE WRAP UL 5.6 X .10 NATL
28	063321	1	HANDLE XFER SWITCH 1-400A
29	073590A	2	FUSE 5A X BUSS
30	0D3587	1	DECAL FUSE REPLACEMENT
31	067210A	1	DECAL GROUND LUG
32	0A9457	1	DECAL NEUTRAL
33	0D4545	1	DECAL MANUAL OPERATION
34 *	0F6129	1	DECAL TEST SEQUENCE 3P TS 3R
35	081221	1	DECAL-UL LIST HSB
36	0C4981	2	SCREW PHTT #8-32 X 1 ZYC
37	063306	1	POWER MONITOR 3-PHASE 208Y
38 **	066972	1	SOCKET RELAY OCTAL 8P 300V-10A
39 ***	PER MODEL	1	DECAL TRANSFER SWITCH
40	022129	1	WASHER LOCK M8-5/16
41	091472	1	DUCT WIRING 1 X 1.5 (24" LG)
42	091472A	1	COVER WIRE DUCT 1 IN (24" LG)
43	064126	2	TRANSFRM 240/480V-120/240V
44	056893	8	SCREW CRIMPTITE 10-24 X 1/2
45 **	048850	1	BLOCK TERM 20A 5 X 6 X 1100V
46	0F5985	1	HARNESS 100/200A 480V RTS (NOT SHOWN)
47	0C4896	9	SCREW FHM M8-1.25 X 20MM
48	067989	9	NUT HEX FL WHIZ M8-1.25
49 ***	10000037322	1	DECAL PROP 65 EN/SP/FR

\* CENTER DECAL ON ISIDE OF THE COVER (ITEM #18)

\*\* ITEMS INCLUDED WITH HARNESS

\*\*\* INSTALL ON FRONT OF THE COVER (ITEM #18)