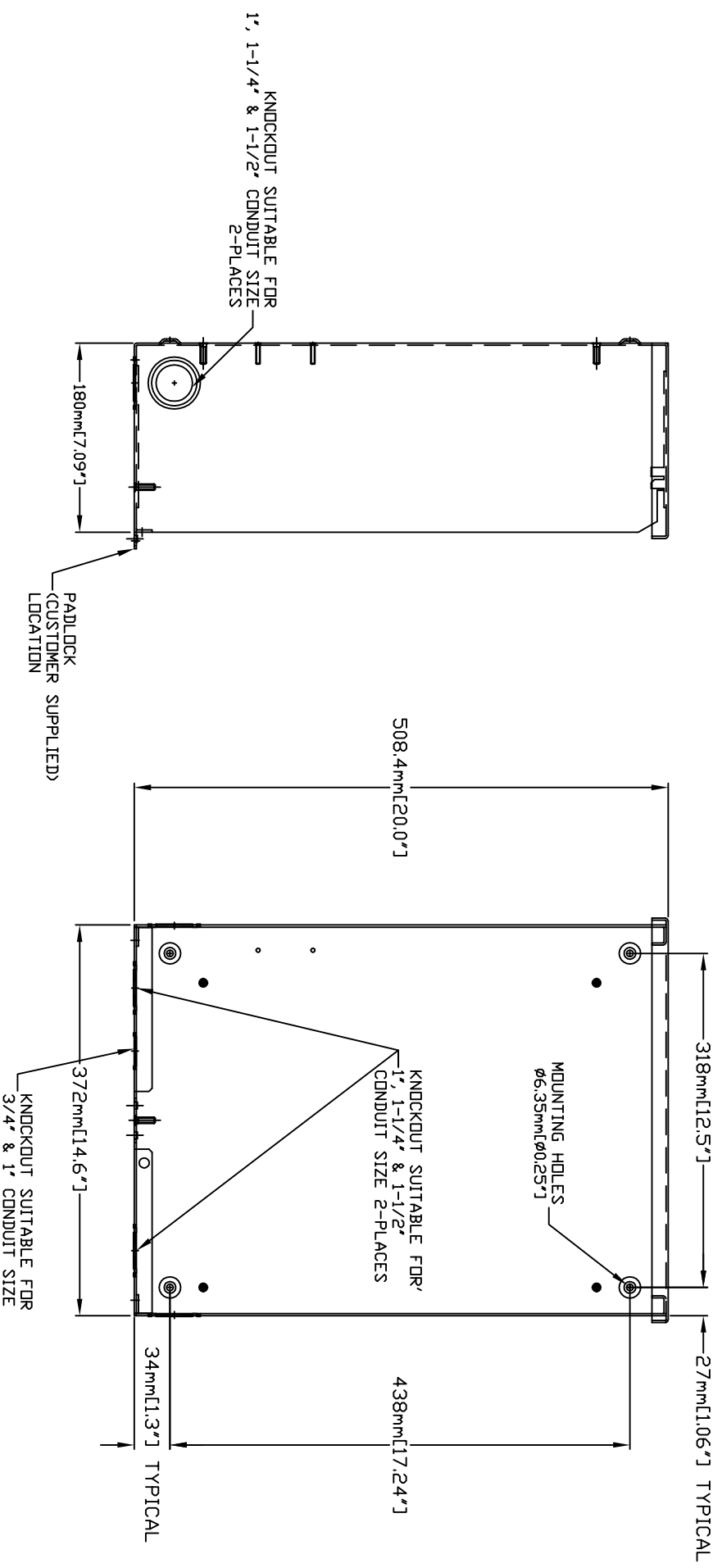
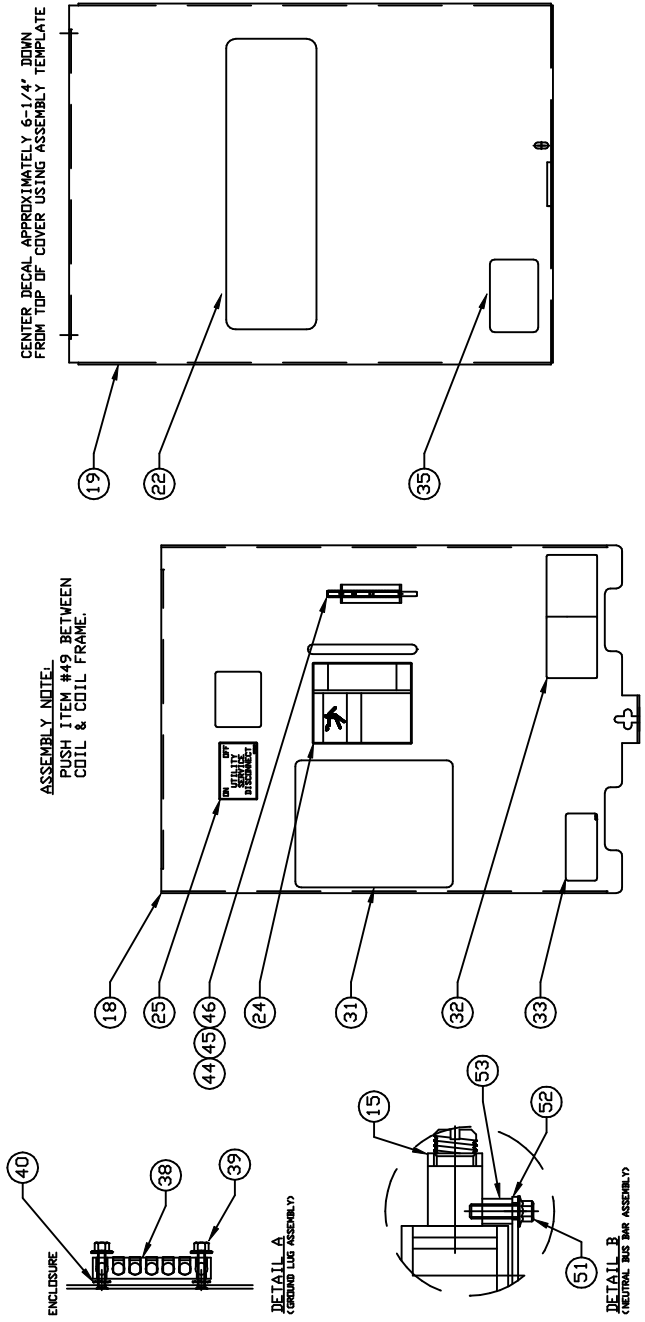
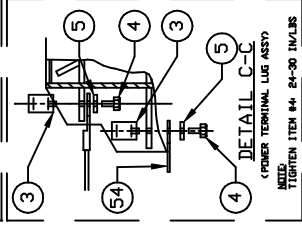
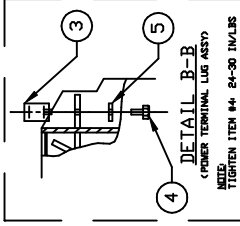
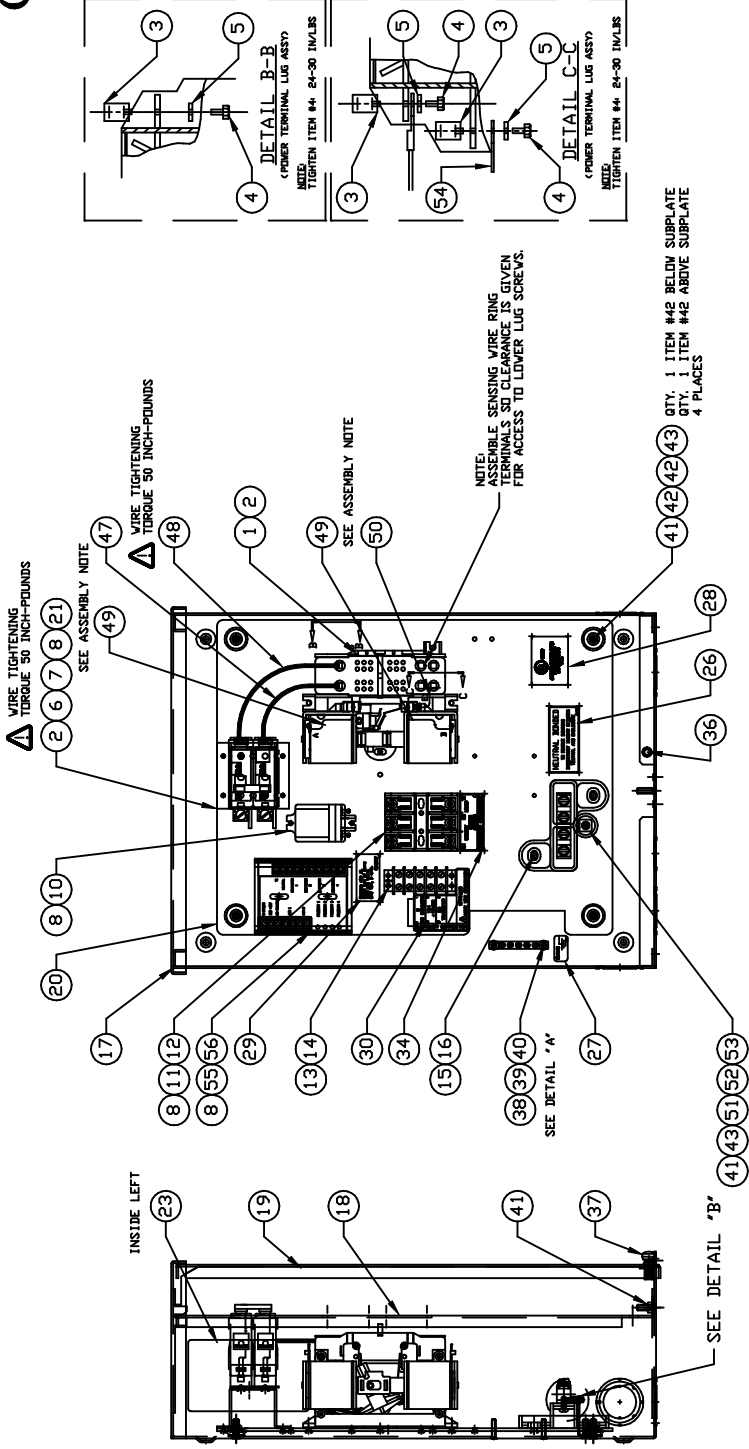


GROUP C



GROUP C



EXPLODED VIEW:
100A 3R SERVICE ENTRANCE
DRAWING #: 0H7264A

EXPLODED VIEW: 100A 3R SERVICE ENTRANCE

DRAWING #: 0H7264A

GROUP C

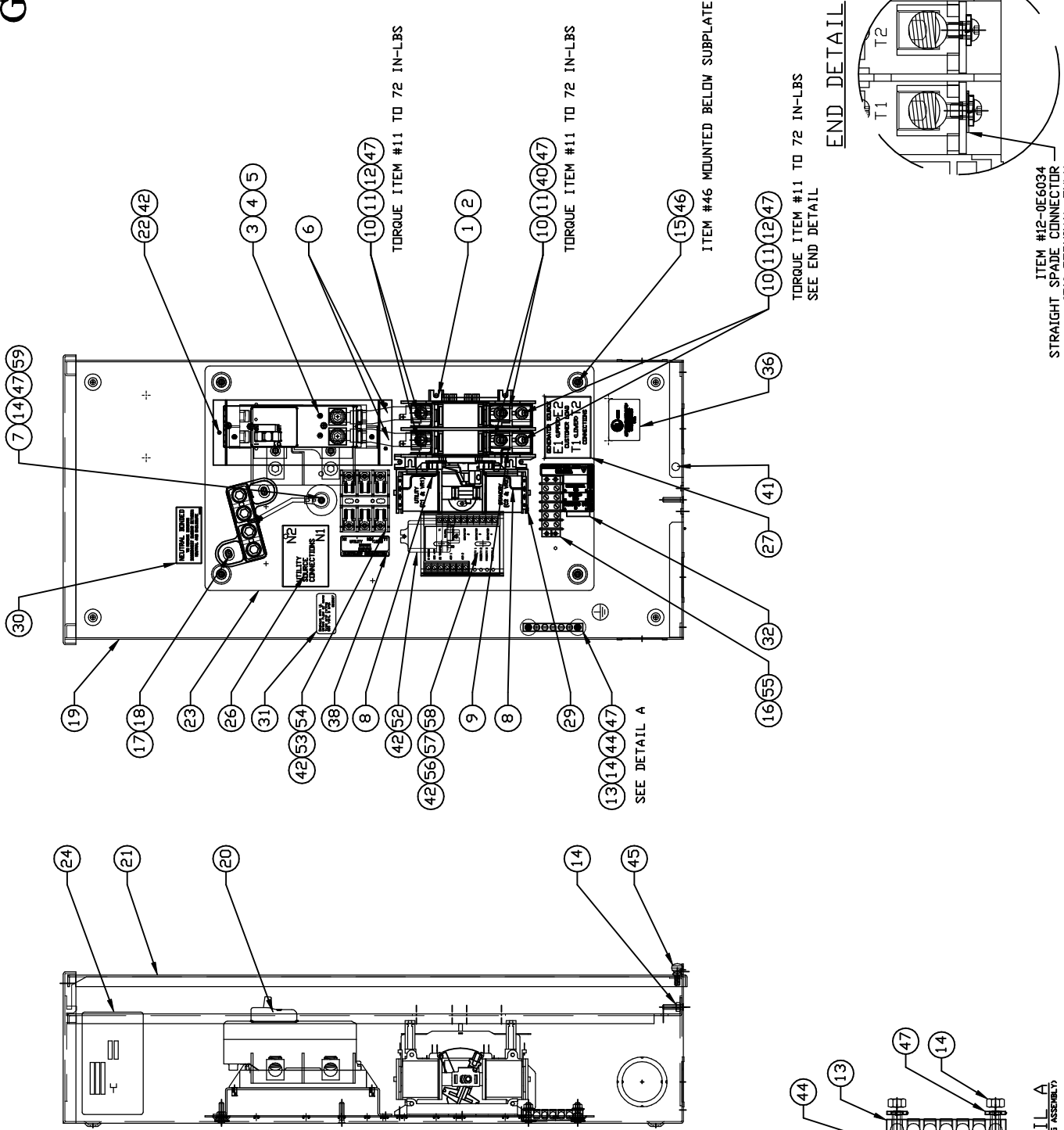
APPLICABLE TO:

ITEM	PART #	QTY.	DESCRIPTION
1	0C2237	1	TR SW-HSB 100A 2P 250V
2	074908	6	SCREW HHTT M5-0.8 X 10 BP
3	077033	6	LUG SLDLSS 1/0-#14X9/16 AL/CU
4	0G7624	6	SCREW PPHM #10-32 X 5/16
5	022152	6	WASHER, LOCK # 10
6	0E7886H	1	CB 100A 2P BACK MNT SIEMENS
7	0E7890	1	C/BKR MOUNTING BRACKET
8	0A1495	10	SCREW HHTT M4-0.7 X 10 BP
9	0H7258	1	WIRING HARNESS HSB (NOT SHOWN)
(2)10	063617	1	RELAY PNL 12VDC DPDT
(2)11	0D2572	1	FUSEBLOCK 30A 600V 3 POLE
12	073590A	3	FUSE 5A X BUSS HLDR73591
(2)13	0H1605	1	BLOCK, TERM 20A 5 X 6
14	0J8111	2	RIVET POP .156 X .25-.37 ALUM
15	0E3717	1	ASSY-NEUT BLK 100A W/TAP
16	090388	2	SCREW HHTT M6-1.0 X 12 MM
17	0G51590AL14	1	ENCLOSURE, 100/200A TRANSFER SWITCH
18	0G96650AL14	1	COVER, INSIDE TRANSFER SWITCH ENCL
19	0G51740AL14	1	COVER, TRANSFER SWITCH
20	0G55920GS0R	1	SUBPLATE, 100/200A XFER SW
21	0G55930AL14	1	RISER, 100A SERVICE ENTRANCE
22	PER MODEL	1	DECAL, FRNT CVR ATS 3R SER DIS
23	0G3369B	REF	DECAL, XFER SW SE 100A 120/240
	0H8063A	REF	DECAL, XFER SW SE 100A 120/240
	0J3804A	REF	DECAL, XFER SW SE 100A 120/240
24	0E3484	1	DECAL, MANUAL OPERATING HANDLE
25	0F9969	1	DECAL, UTILITY DISCONNECT
26	0G4220	1	DECAL, NEUTRAL CONNECTION
27	067210A	1	DECAL, GROUNDING LUG
28	0G0900	1	DECAL, UL LIST HSB
29	0D3587	1	DECAL, FUSE REPLACEMENT
30	0H7917	1	DECAL, TERMINAL STRIP
31	0H1558	1	DECAL, TEST SEQUENCE
32	0G3259	1	DECAL, TERMINAL SHOCK HZD BI
33	0G3274	1	DECAL, LIVE CIRCUIT ENG/FRN/SPN
34	0H6389	1	DECAL, UTILITY LOAD SENSE 240V
35	0H7274	1	DECAL, 2008 NEC COMPLIANCE
36	058000E	1	NUT TRIC 1/4-20 X .525
37	0E7213	1	THUMB SCREW 1/4-20x1/2
38	0E6523	1	GROUND BAR (5) 4-14 AWG CONN
39	0F7806	2	NUT HEX FL WHIZ M4-0.7
40	026579	2	WASHER SHAKEPROOF EXT #8 STEEL
41	085889	6	NUT HEX 1/4-20 SS
42	022473	8	WASHER FLAT 1/4-M6 ZINC
43	022097	5	WASHER LOCK M6-1/4
44	0E6193	1	BRACKET, ARM EXTENDER
45	0D6162	2	RIVET POP .156 X .362 AL
(1)46	0E6155	1	ARM EXTENDER PIN
47	0G5780A	1	WIRE ASM, 2AWG 100A 2-P T/S N1A
48	0G5780B	1	WIRE ASM, 2AWG 100A 2-P T/S N2A
49	0E6303	2	WIRE-A
50	0E6303C	1	WIRE-E1
51	0C3992	1	SCREW HHTT M4-0.7 X 16 BP
52	0G6417	1	BUSBAR, NEUTRAL BLOCK
53	0G7226	1	5/16" BRASS SPACER
54	074138	1	LUG DIS QK NI-S 10X45 DEG BR/T
55	0H7376A	1	ASSY PCB AC LOAD CONTROLLER
56	0H7270	1	CHANNEL SNAPTRACK 76.2 X 101.2

(1) SUPPLIED WITH TRANSFER SWITCH ITEM #1

(2) SUPPLIED WITH WIRE HARNESS ITEM #9

GROUP C



DETAIL A
GROUND LUG ASSEMBLY

EXPLODED VIEW:
200A SERVICE ENTRANCE GENERAC CB
DRAWING #: 0H7266A

APPLICABLE TO:

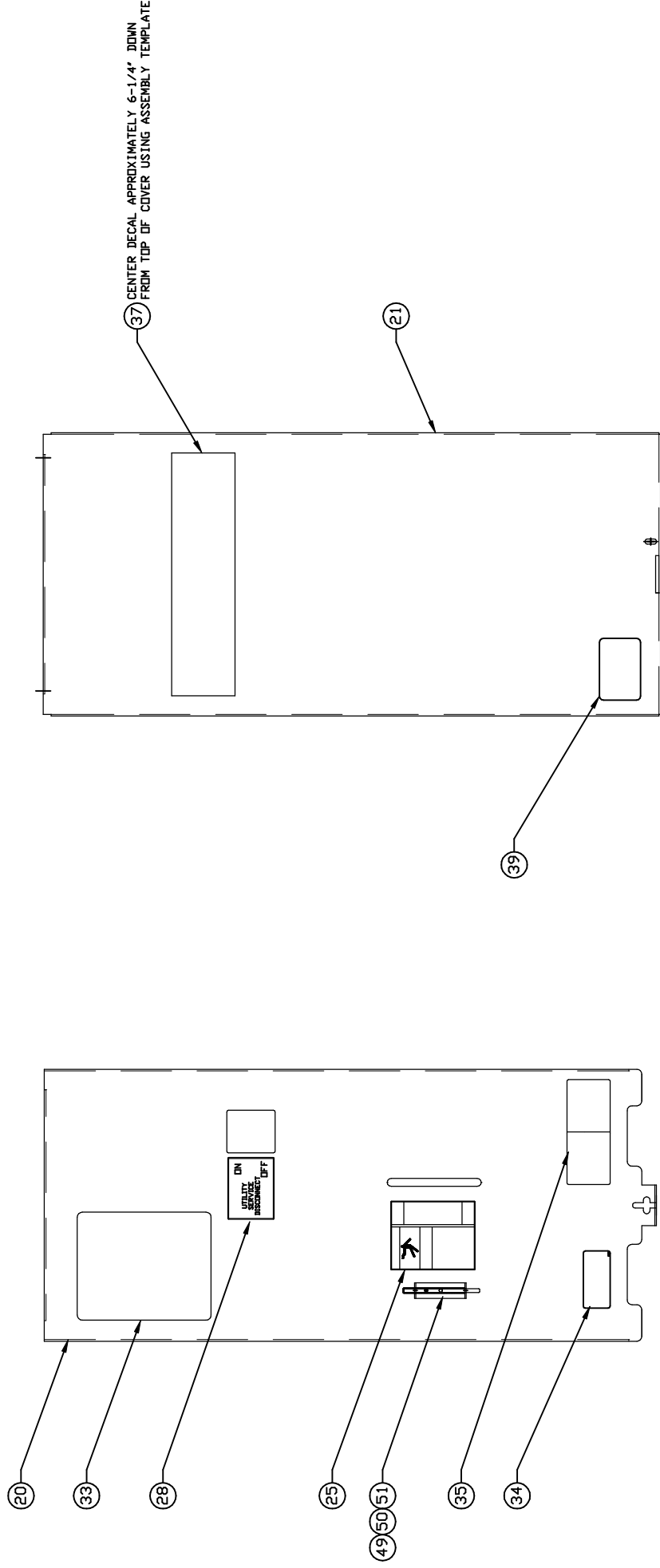
ITEM	PART #	QTY.	DESCRIPTION
1	0D9618	1	TRANSFER SW. HSB 200A 2P 250V
2	074908	5	SCREW HHTT M5-0.8 X 10 BP
3	0E3628	1	CB 0200A 2P 240V S QN2 LL
4	0E3664	1	BASE, QN CIRCUIT BREAKER
5	036918	2	SCREW PPHM #8-32 X 1/2
6	0G9299	2	WIRE, 3/0 N1,N2
7	0G9424	1	WIRE, NEUTRAL BONDING 6AWG
8	0E6303	2	WIRE-A
9	0E6303B	1	WIRE-E1
10	0E3375	6	LUG SOLDERLESS 250-#6 AL/CU
11	0F1252	6	SCREW BHSC 1/4-20 X 3/8
(1)12	0E6034	3	STRAIGHT SPADE CONNECTOR
13	0G6320	1	GROUND BAR (5) 2-14 AWG CONN
14	085889	4	NUT HEX 1/4-20 SS
15	022473	4	WASHER FLAT 1/20-M6 ZINC
16	0A1661	2	RIVET, POP .156 X .67
17	0E3717A	1	ASSY-NEUT BLK 200-400A W/TAP
18	090388	2	SCREW HHTT M6-1.0 X 12 MM
19	0H10860AL14	1	ENCLOSURE, 200A SE XFER SW
20	0G97730AL14	1	COVER, INSIDE 200A DUAL BREAKER
21	0H10870AL14	1	COVER, TRANSFER SWITCH
22	0G93000AL14	1	CB BRKT 200A TRANSFER SWITCH SIEM
23	0G9650	1	SUBPLATE, 200A SE XFER SW
24	0G3369A	REF	DECAL, TRANSFER SWITCH DATA
25	0E3484	1	DECAL, MANUAL OPERATING HANDLE
26	0H1765A	1	DECAL, UTILITY SOURCE CONNECTION
27	0H1765B	1	DECAL, GENERATOR/ CUSTOMER CONN
28	0H1765C	1	DECAL, UTILITY DISCONNECT
29	0G8535	1	DECAL, TRANSFER SWITCH INFO
30	0G4220	1	DECAL, NEUTRAL CONNECTION
31	0D3587	1	DECAL, FUSE REPLACEMENT
32	0H7917	1	DECAL, TERMINAL STRIP
33	0H4699	1	DECAL, TEST SEQUENCE
34	0G3274	1	DECAL, LIVE CIRCUIT ENG/FRN/SPN
35	0G3259	1	DECAL, TERMINAL SHOCK HZD BI
36	0G0900	1	DECAL, UL LIST HSB
37	0G1579B	1	DECAL, SIEMENS 3.2" X 11.8"
38	0H6389	1	DECAL, UTILITY LOAD SENSE 240V
39	0H7274	1	DECAL, 2008 NEC COMPLIANCE
41	058000E	1	NUT TRIC 1/4-20 X .525
40	0E6033	2	90 DEGREE DN SPADE CONNECTOR
42	0A1495	9	SCREW HHTT M4-0.7 X 10 BP
43	064761	4	TIE WRAP UL 5.6 X .10 (NOT SHOWN)
44	026850	2	WASHER SHAKEPROOF EXT 1/4 STL
45	0E7213	1	THUMB SCREW 1/4-20x1/2
46	0G8411	4	NUT HEX FL WHIZ 1/4-20
47	022097	9	WASHER LOCK M6-1/4
48	0H7259	1	WIRING HARNESS HSB (NOT SHOWN)
49	0E6193	1	BRACKET, ARM EXTENDER
50	0D6162	2	RIVET POP .156 X .362 AL
(1)51	0E6155	1	ARM EXTENDER PIN
(2)52	063617	1	RELAY PNL 12VDC DPDT
(2)53	0D2572	1	FUSEBLOCK 30A 600V 3 POLE
54	073590A	3	FUSE 5A X BUSS HLDR73591
(2)55	0H1605	1	BLOCK TERM 20A 5 X 6 X 1100V
56	0H7376A	1	ASSY PCB AC LOAD CONTROLLER
57	0H7190	1	BRACKET LOAD SHED 200A RTS
58	0H7270	1	CHANNEL SNAPTRACK 76.2 X 101.2
59	026902	1	SCREW HHTT #8-32 X 1/4 CZ

(1)SUPPLIED WITH TRANSFER SWITCH ITEM #1

(2)SUPPLIED WITH HARNESS ITEM #48

GROUP C

DECAL DETAILS
 VIEWS SHOWN WITH ITEMS #19 & #20 FULLY ASSEMBLED



EXPLODED VIEW:
 200A SERVICE ENTRANCE GENERAC CB
 DRAWING #: 0H7266A

APPLICABLE TO:

THIS PAGE IS LEFT INTENTIONALLY BLANK