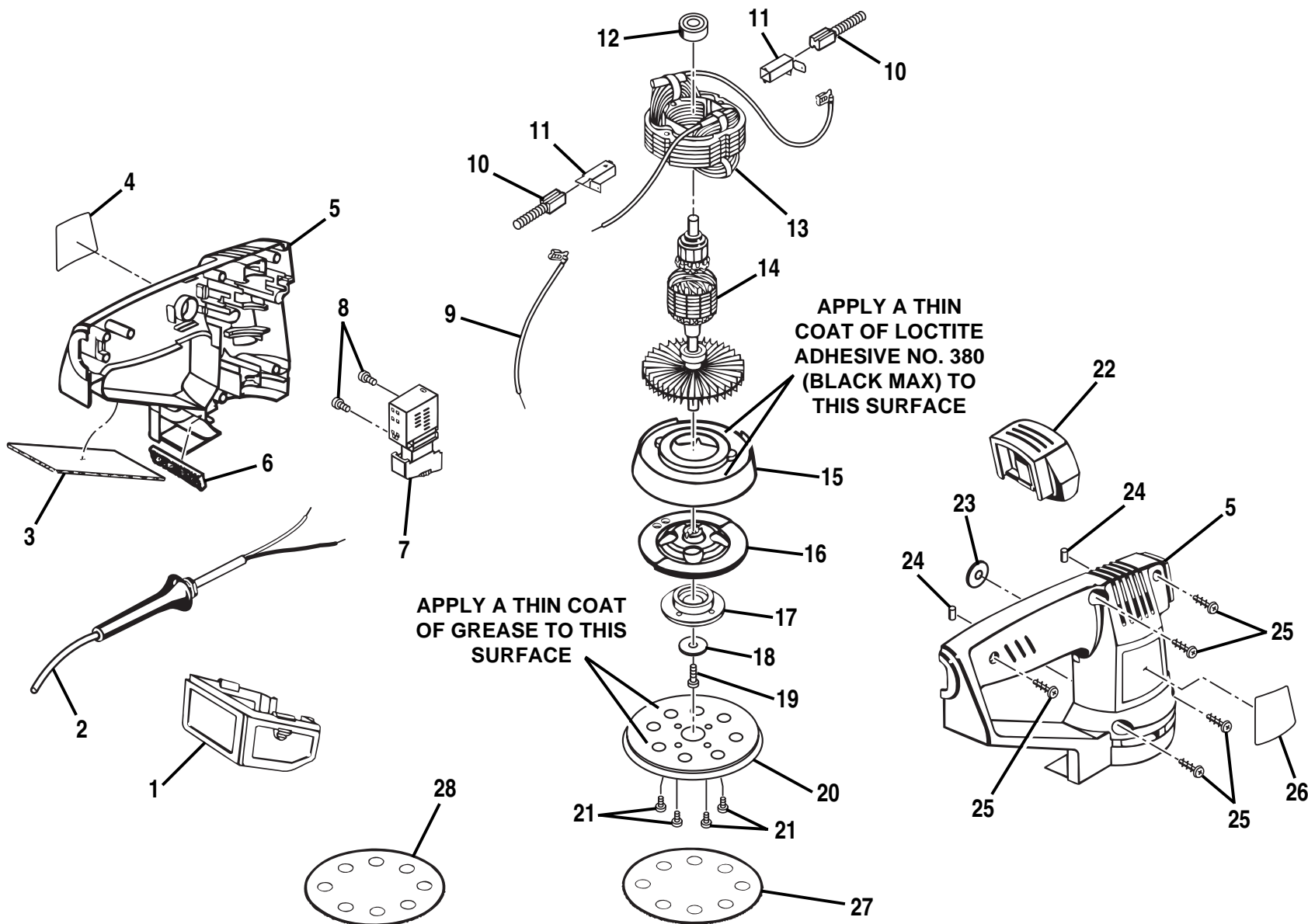


RYOBI SANDER – MODEL NUMBER RS280



**WARNING:** Improper repair of a double insulated tool can result in damages to the double insulation system possibly causing electrical shock or electrocution. Any repairs requiring disassembly of your tool requires safety testing and should only be performed by a Ryobi Authorized Service Center. For the repair center nearest you call 1-800-525-2579 in the United States or 1-800-265-6778 in Canada.

## RYOBI SANDER – MODEL NUMBER RS280

The model number will be found on a plate attached to the motor housing. Always mention the model number in all correspondence regarding your **SANDER** or when ordering repair parts.

### PARTS LIST

Key No.	Part Number	Description	Quan.	Key No.	Part Number	Description	Quan.
1	969533-002	DUST BOX .....	1	16	973714-003	COUNTERBALANCE .....	1
2	990496-016	CORD .....	1	17	968305-047	BEARING CAP W/BEARING .....	1
3	970099-002	SEAL .....	1	18	703493-818	WASHER .....	1
4	973712-001	LOGO PLATE .....	1	19	969649-001	SCREW (#8-32 X 1/2 IN. PAN HD.) .....	1
5	970113-001	HOUSING ASSEMBLY .....	1	20	975241-002	BACKING PAD .....	1
6	969896-001	SMALL GASKET .....	1	21	998586-001	SCREW (#10-32 X 1/4 IN. PAN HD.) .....	4
7	968303-006	SWITCH .....	1	22	969645-001	FRONT HANDLE .....	1
8	968775-001	SCREW (M3 X 7 FIL. HD.) .....	2	23	623552-003	STATOR PAD .....	1
9	969421-007	LEAD .....	1	24	623019-004	RUBBER PLUG .....	2
10	968304-013	BRUSH ASSEMBLY .....	2	25	968700-011	SCREW (#6-19 X 3/4 IN. PAN HD.) .....	5
11	999186-001	BRUSH TUBE .....	2	26	981334-001	DATA PLATE .....	1
12	968305-009	BALL BEARING (NTN#608ZZ/1E) .....	1	27	973887-003	SANDING DISC .....	1
13	968307-114	FIELD .....	1	28	974484-001	CONVERSION PAD .....	1
14	968306-119	ARMATURE .....	1		972000-702	OPERATOR'S MANUAL	
15	973713-001	SKIRT .....	1		6-00		