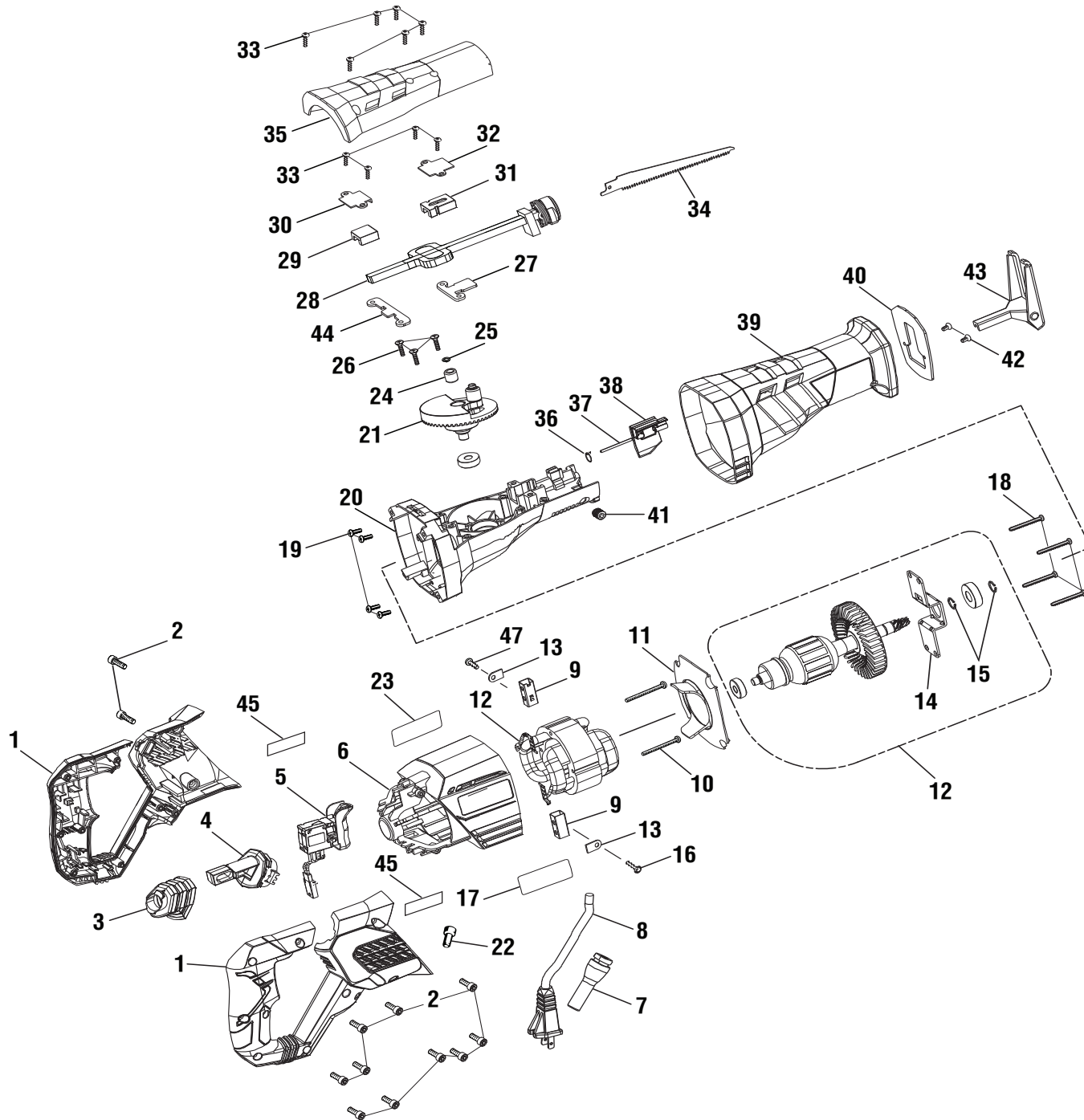


RYOBI
Variable Speed
Reciprocating Saw
Model No. RJ1861V
Repair Sheet

ONE WORLD TECHNOLOGIES, INC.
P.O. Box 1288, Anderson, SC 29625 • Phone 1-800-525-2579
www.ryobitools.com

RYOBI RECIPROCATING SAW – MODEL NO. RJ1861V



RYOBI RECIPROCATING SAW – MODEL NO. RJ1861V

The model number will be found on a label attached to the motor housing. Always mention the model number in all correspondence regarding your **RECIPROCATING SAW** or when ordering repair parts.

PARTS LIST

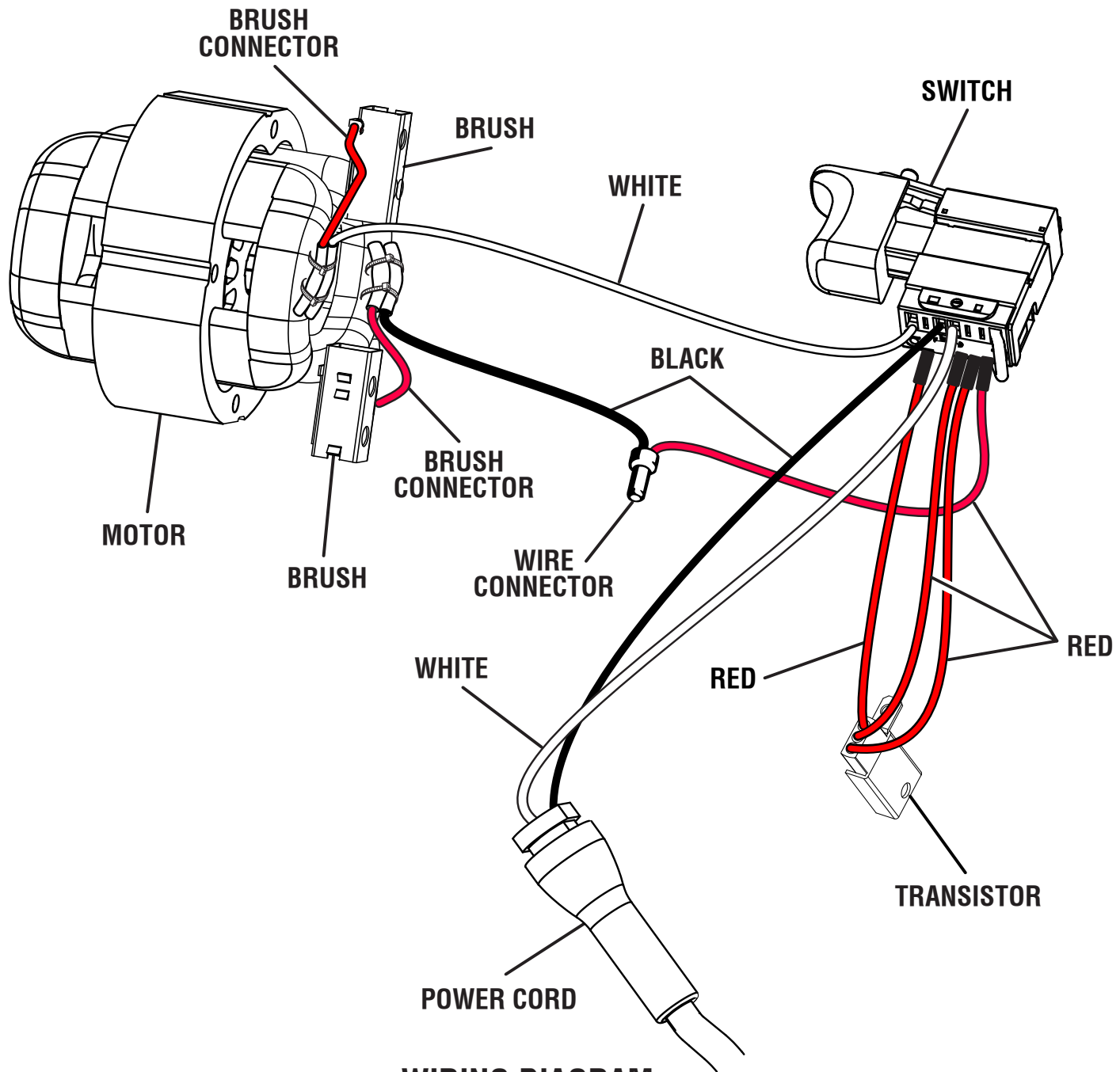
KEY NO.	PART NUMBER	DESCRIPTION	QTY	KEY NO.	PART NUMBER	DESCRIPTION	QTY
1	202664002	Handle Assembly.....	1	23	941002197	Logo Label.....	1
2	660024032	Screw (M4 x 14 mm, T20 Torx Pan Hd.).....	12	24	6829601	Needle Bearing.....	1
3	564095001	Rubber Sleeve.....	1	25	6770401	Retaining Ring.....	1
4	523283001	Connecting Rod.....	1	26	661185001	Screw (8-32 x 1/2 in., T15 Torx Flat Hd.).....	3
5	760472006	Switch.....	1	27	635222001	Front Plate.....	1
6	204328001	Motor Housing Assembly (Inc. Key Nos. 17 & 23).....	1	28	304003006	Output Shaft Assembly.....	1
7	551060001	Bend Relief.....	1	29	6935601	Guide Block (Rear).....	1
8	730372041	Power Cord.....	1	30	6934901	Cover Plate (Rear).....	1
9	290075051	Brush Assembly.....	2	31	610730001	Guide Block (Front).....	1
10	661748001	Screw (M4.2 x 44 mm, Pan Hd.).....	2	32	6934201	Cover Plate (Front).....	1
11	526258001	Baffle.....	1	33	661171001	Screw (M4 x 17 mm, T20 Torx Pan Hd.).....	10
12	206187003	* Motor Assembly(Inc. Key Nos. 14-15, Use Before Serial No. CS18171N686376).....	1	34	690291006	Wood Cutting Blade.....	1
	206187005	** Motor Assembly (Inc. Key Nos. 14-15, Use After Serial No. CS18171N686376).....	1	35	526259001	Gear Case Cover.....	1
				36	690502001	Torsion Spring.....	1
				37	6951801	Pin.....	1
13	630801001	Brush Tube Clamp.....	2	38	306145001	Release Lever Assembly.....	1
14	634912002	Bearing Cover.....	1	39	563431001	Rubber Boot.....	1
15	6939601	C-Ring.....	2	40	634971001	Guide Plate.....	1
16	660140002	Screw (8-16 x 1/2 in., Pan Hd.).....	2	41	660170001	Screw (M10 x 10 mm, Hex Soc. Hd.).....	1
17	941121739	Data Label.....	1	42	660165015	Screw (M4 x 10 mm, T20 Torx Pan Hd.).....	2
18	660259008	Screw (M4.5 x 35 mm, Pan Hd.).....	4	43	300216056	Shoe Assembly.....	1
19	660228012	Screw (M3 x 8 mm, Flat Hd.).....	4	44	635224001	Rear Plate.....	1
20	203916001	Gear Case.....	1	45	902164005	Mica Sheet.....	2
21	202803002	* Bevel Gear & Pinion Assembly (Use Before Serial No. CS18171N686376).....	1		Not Shown:		
	202803003	** Bevel Gear & Pinion Assembly (Use After Serial No. CS18171N686376).....	1		991000417	Operator's Manual	
22	790009001	Wire Connector.....	1		8-10-18 (Rev:04)		

⚠ WARNING: Improper repair of a double insulated tool can result in damage to the double insulation system possibly causing electrical shock or electrocution. Any repairs requiring disassembly of your tool requires safety testing and should only be performed by a Ryobi Authorized Service Center. For the service center nearest you call 1-800-525-2579.

* **206187003 and 202803002 must be used together**

** **206187005 and 202803003 must be used together**

RYOBI RECIPROCATING SAW – MODEL NO. RJ1861V



WIRING DIAGRAM