

## Angle Drill Head - 2 608 000 A00 - RHA-50

[www.powertools-aftersaleservice.com](http://www.powertools-aftersaleservice.com)



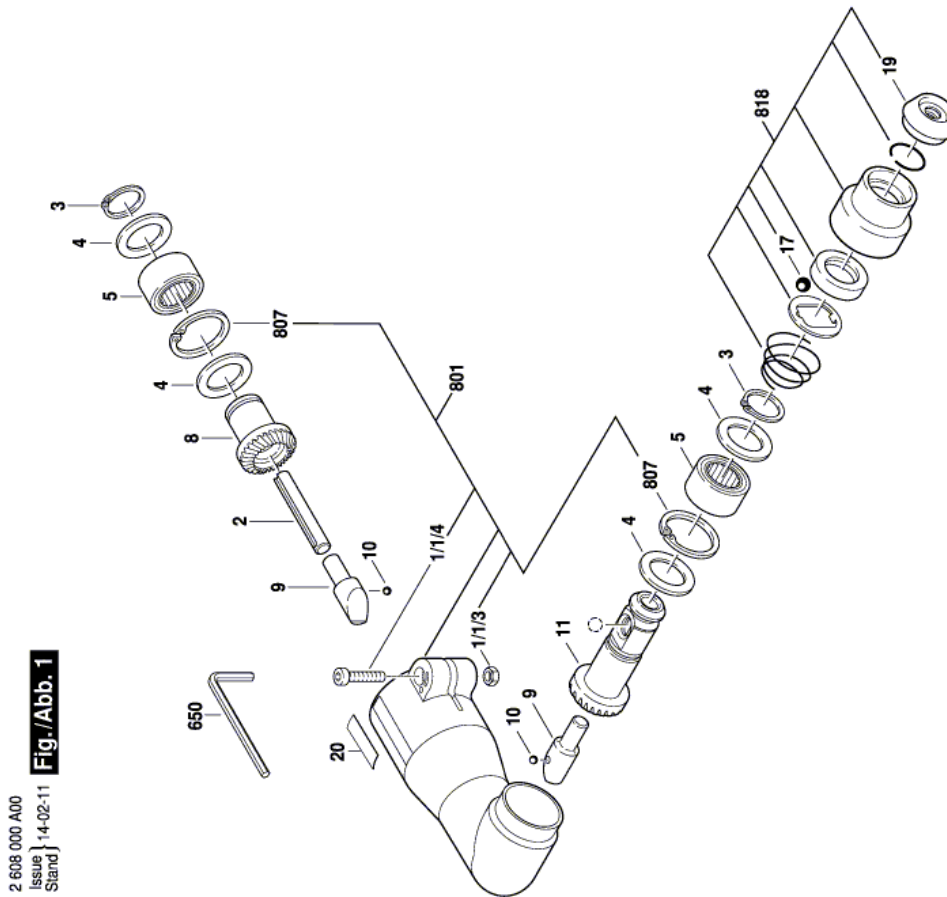
**BOSCH**

Item	Part Number	Description	Illustration	Price	Quantity	Price Group
1/1/3	3 603 435 044	Hex Nut	1	-,-	1	10
1/1/4	2 910 141 205	Hex Socket Head Cap Screw DIN 912-M6x30-8.8	1	-,-	1	13
2	2 603 106 006	Driving Pin	1	-,-	1	19
3	2 916 650 034	Spring retaining ring DIN 471 21x1,2MM	1	-,-	2	10
4	1 600 102 006	Plain Washer	1	-,-	4	12
5	3 610 939 000	Needle-Roller Bearing	1	-,-	2	29
8	3 616 333 000	Bevel Gear Z=25	1	-,-	1	39
9	3 613 121 001	Striker Pin	1	-,-	2	31
10	1 903 230 007	Ball DIN 5401-4 MM-III-ST	1	-,-	2	10
11	3 616 490 000	Bevel Gear Z=25	1	-,-	1	43
17	1 903 230 013	Ball DIN 5401-Ø7MM-III-ST	1	-,-	1	10
19	1 610 508 008	Protective Cap L=17 MM, SDS-PLUS	1	-,-	1	12
20	3 601 119 055	Manufacturer's nameplate	1	-,-	1	15
650	1 907 950 006	Offset Screwdriver DIN 911-SW5 BLACK	1	-,-	1	15
801	2 605 105 969	Parts Set	1	-,-	1	46
807	3 607 031 588	Parts Set	1	-,-	1	22
818	1 617 000 163	Protection Sleeve SDS-PLUS	1	-,-	1	20

## Product information Angle Drill Head - 2 608 000 A00 - RHA-50

Product No	2 608 000 A00
Description	114.901; Angle Drill Head
DIN-Text	
ID_Text_Ext	0
Trading_Description	RHA-50
Voltage_1	0 V
ID_Country_Product	---

Illustration - Type E



2 608 000 A00  
Issue 14-02-11  
Stand }  
**Fig./Abb. 1**

Modifications reserved  
Änderungen vorbehalten  
Modificacions reservées  
Salvo modificaciones

Information subject to change without further notice.