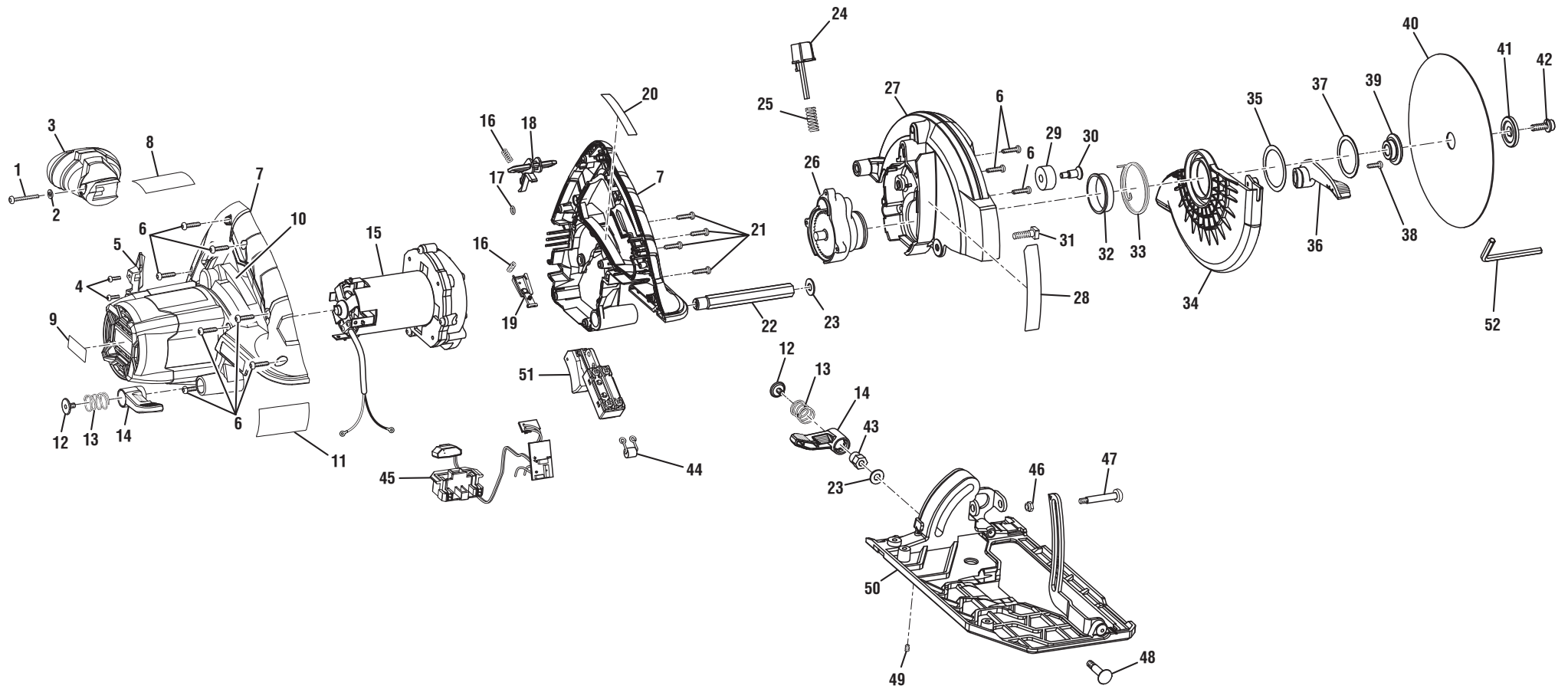


RIDGID® R8651





R8651

KEY	P/N	DESCRIPTION	QTY	KEY	P/N	DESCRIPTION	QTY
1	660024011	Screw (M4 x 28 mm)	1	33	680672002	Torsion Spring	1
2	6886501	Washer	1	34	522625002	Lower Blade Guard	1
3	522630001	Front Handle	1	35	631771001	Washer (OD40 x ID33.65 x 0.37t)	1
4	660230011	Screw (M3 x 10 mm)	2	36	522626001	Lower Blade Guard Lever	1
5	522640001	Baffle	1	37	691197001	Retaining Ring	1
6	660024044	Screw (M4 x 16 mm)	10	38	660024045	Screw (M4 x 13.5 mm)	1
7	200202552	Housing Assembly (Inc. Key Nos. 9-11)	1	39	610120006	Inner Blade Washer	1
8	940488190	Data Label	1	40	681444002	Saw Blade (6-1/2 in.)	1
9	940034003	Logo Label	1	41	610121003	Outer Blade Washer	1
10	940221213	Warning Label	1	42	660144008	Blade Screw (M6 x 16 mm, Hex Hd.)	1
11	940533015	Instruction Label	1	43	660841004	Hex Nut (1/4-20)	1
12	660993001	Screw (1/4-20 x 7 mm)	2	44	840312001	Rectifier	1
13	681035001	Spring	2	45	200781002	Circuit Board Assembly	1
14	522691001	Lever	2	46	670974002	Hex Nut (M5)	1
15	200146080	Motor Assembly	1	47	660145009	Carriage Bolt (M5 x 40 mm)	1
16	672029001	Spring	2	48	660858008	Carriage Bolt (1/4-20 x 7/8 in.)	1
17	562025001	O-Ring	1	49	660066005	Set Screw (#8-32 x 1/4 in.)	1
18	517242004	Lock-off Button	1	50	304267001	Base Assembly	1
19	522639001	Trigger	1	51	760396012	Switch Assembly	1
20	940221214	Warning Label	1	52	680002006	Hex Key (5 mm)	1
21	660212047	Screw (M4 x 14.5 mm)	4	Not Shown:			
22	672027003	Hexagon Bar	1	202050004	Edge Guide Assembly (Optional)	1	
23	631771002	Washer (OD16 x ID6.8 x 1t)	2	130183001	Battery Pack (R840085, Compact)	1	
24	304390001	Spindle Lock Assembly (Inc. Key No. 25)	1	130183002	Battery Pack (R840083, High Capacity)	1	
25	672028001	Spring	1	140154001	Charger (R840093)	1	
26	220162001	Gear Box Assembly	1	988000378	Correlation Supplement	1	
27	200697005	Upper Blade Guard Assembly (Inc. Key No. 28)	1	988000179	Operator's Manual (R840083 and R840085)	1	
28	940533016	Instruction Label	1	988000181	Operator's Manual (R840093)	1	
29	560990003	Bumper	1	988000416	Operator's Manual (R8651)	1	
30	661245001	Screw (M6 x 20 mm)	1	12-13-11 (Rev:04)			
31	660865002	Screw (1/4-20 x 3/4 in., Square Hd.)	1				
32	514307001	Sleeve	1				