

RIDGID
7 1/4 IN. 18 V BRUSHLESS
SLIDING COMPOUND MITER SAW
MODEL NO. R48607
REPAIR SHEET

RIDGID
SCIE À ONGLETS COMBINÉS COULISSANTE
SANS BALAI de 184 mm (7,25 po), 18 V
NUMÉRO DE MODÈLE R48607
FEUILLE DE RÉPARATION

RIDGID
SIERRA INGLETEADORA COMPUESTA DESLIZANTE
SIN ESCOBILLAS de 184 mm (7,25 pulg.), 18 V
NÚMERO DE MODELO R48607
HOJA DE REPARACIONES

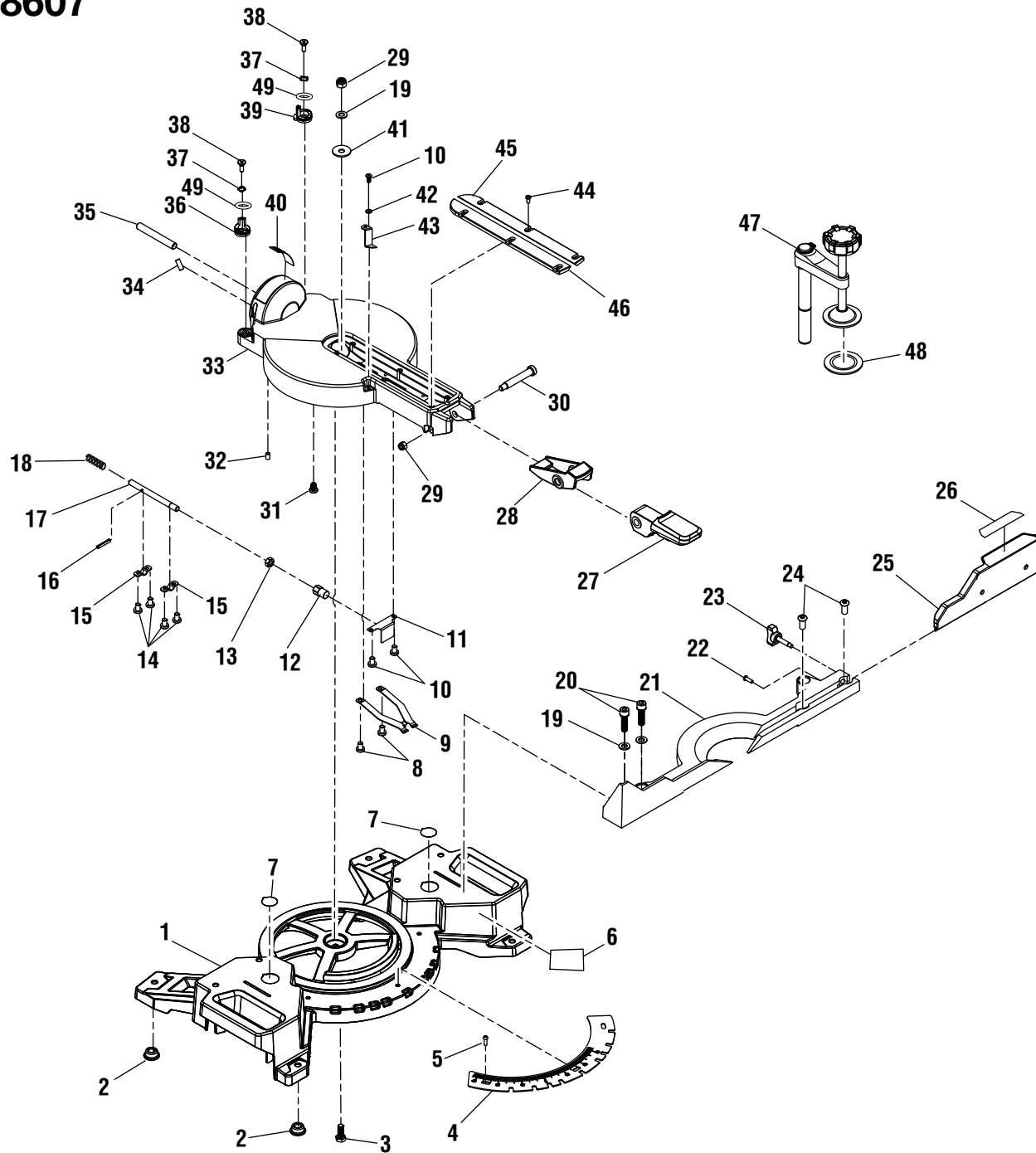


FIGURE A
FIGURA A



R48607

PARTS LIST FOR FIGURE A

KEY NO.	PART NUMBER	DESCRIPTION	QTY	KEY NO.	PART NUMBER	DESCRIPTION	QTY
1	089041035714	Base Assembly (Inc. Key Nos. 6-7).....	1	27	089041035010	Miter Lock Handle.....	1
2	089041035002	Base Pad.....	4	28	089041035011	Miter Detent Lever.....	1
3	089006017007	Screw (M8 x 20 mm, Hex Hd.).....	1	29	089006017021	Lock Nut (M8).....	2
4	089041035908	Miter Scale.....	1	30	089041035012	Bolt (M8 x 10 mm, Special).....	1
5	089041035003	Bolt (M5 x 10 mm, Hex Soc. Hd.).....	3	31	080016005034	Table Pad.....	8
6	089041035901	Instructions Label.....	1	32	089041035111	Set Screw (M6 x 8 mm).....	1
7	089100207097	No Hands Label.....	2	33	089041035702	Table Assembly.....	1
8	089041035124	Bolt (M5 x 10 mm, Hex Soc. Hd.).....	2	34	089041033093	Set Screw (M6 x 12 mm).....	1
9	089041035122	Detent Spring.....	1	35	089041035014	Bevel Pivot Pin.....	1
10	089041035110	Screw (M4 x 12 mm, Round Hd.).....	3	36	089041035156	Left Bevel Detent.....	1
11	089041035005	Fixed Plate.....	1	37	089041035144	Wavy Washer (M6).....	2
12	089041035006	Adjustment Nut (M8).....	1	38	089041035145	Screw (M5, Special).....	2
13	080016005053	Hex Nut (M8).....	1	39	089041035157	Right Bevel Detent.....	1
14	080016005056	Screw (M5 x 12 mm, Pan Hd.).....	4	40	089041035903	Bevel Scale.....	1
15	089041035007	Rod Holding Plate.....	2	41	089006017071	Washer (ID8.25 x OD21.9 x 1.5t).....	1
16	089110101186	Spring Pin.....	1	42	089006017066	Washer (ID4 x OD8 x 1.0t).....	1
17	089041035008	Miter Lock Rod.....	1	43	089041035019	Miter Indicator.....	1
18	089041035009	Compression Spring.....	1	44	080016005003	Screw (M4 x 10 mm, Truss Hd.).....	6
19	089006017020	Washer (ID8 x OD16 x 1.5t).....	3	45	089041035020	Throat Plate (Right).....	1
20	080016005039	Bolt w/Washer (M8 x 35 mm, Hex Soc. Hd.).....	2	46	089041035021	Throat Plate (Left).....	1
21	089041035123	Fixed Fence.....	1	47	089041035713	Work Clamp Assembly (Inc. Key No. 48).....	1
22	089041035112	Screw (M6 x 22 mm, Pan Hd.).....	1	48	089041035108	Clamp Cover.....	1
23	089041035022	Fence Lock Knob.....	1	49	089041033032	O-ring.....	2
24	089041035023	Bolt (M8 x 20 mm, Hex Soc. Hd.).....	2	Not Shown:			
25	089041035703	Sliding Fence Assembly (Inc. Key No. 26).....	1	991000876	Operator's Manual		
26	089041035904	Fence Warning Label (Right).....	1	7-26-18			
				(Rev:04)			

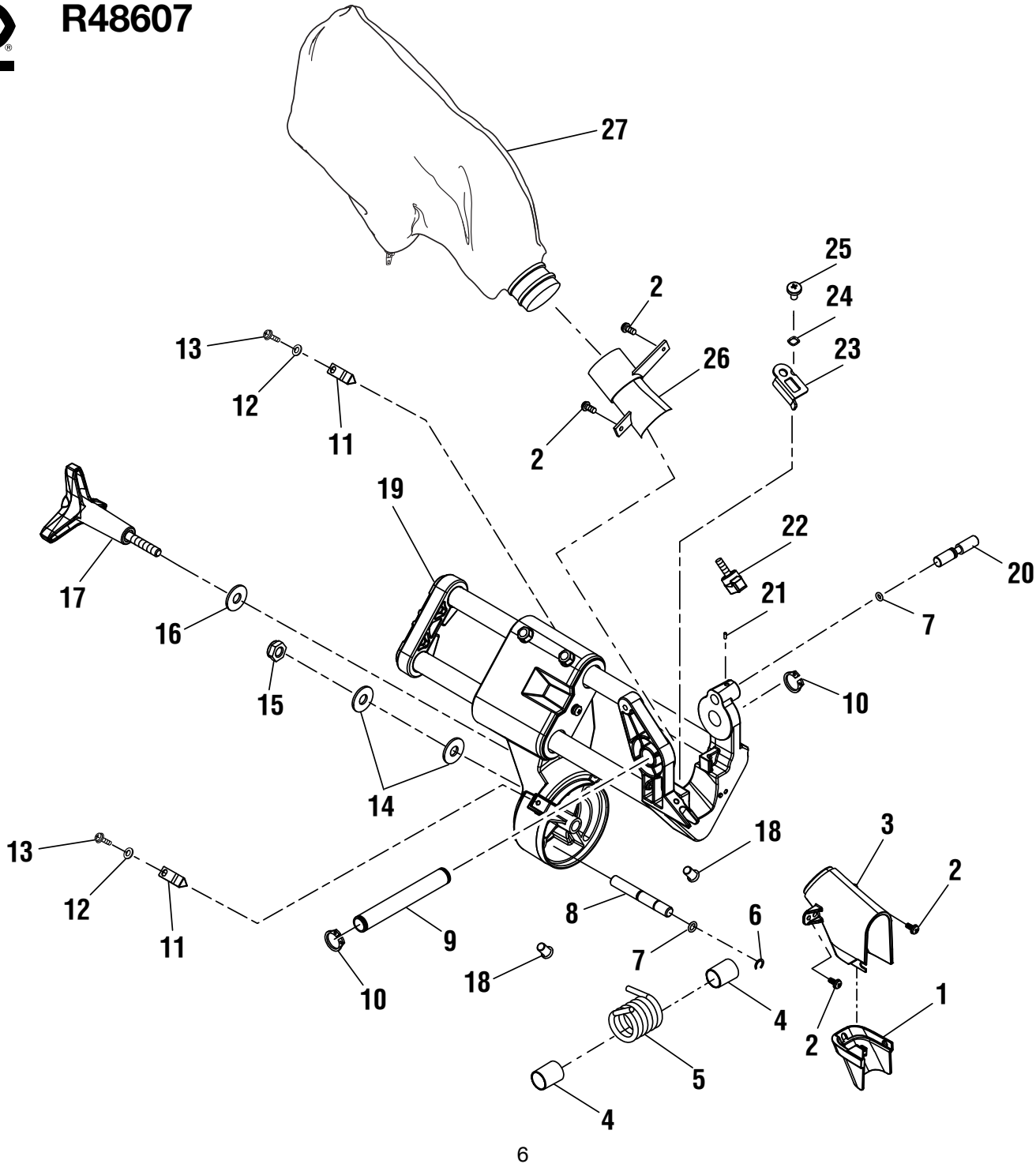


FIGURE B
FIGURA B

PARTS LIST FOR FIGURE B

KEY NO.	PART NUMBER	DESCRIPTION	QTY
1	089041035025	Dust Chute (Lower)	1
2	080016005003	Screw (M4 x 10 mm, Truss Hd.).....	4
3	089041035026	Dust Chute (Upper)	1
4	089041035147	Sleeve.....	2
5	089041035028	Torsion Spring	1
6	089041035113	C-Ring	1
7	089041033031	O-Ring.....	2
8	089041035035	Bevel Lock Pin	1
9	089041035029	Pivot Pin	1
10	089290001102	C-Ring	2
11	089041035148	Bevel Indicator	2
12	089006017066	Washer (ID4 x OD8 x 1.0t).....	2
13	089041035110	Screw (M4 x 12 mm, Round Hd.).....	2
14	089041035120	Washer (ID10 x OD20 x 2t).....	2
15	080016005017	Lock Nut (M10).....	1
16	089006017032	Washer (ID8 x OD16 x 2t).....	1
17	089041035039	Bevel Lock Lever.....	1
18	089041035125	Screw (M6 x 17 mm, Round Hd.).....	2
19	089041035721	Bevel, Pivot and Slide Bracket Assembly	1
20	089041035049	Depth Lock Pin.....	1
21	089041033098	Set Screw (M4 x 4 mm).....	1
22	089041035044	Tube Lock Knob	1
23	089041035048	Adjustable Stop Plate.....	1
24	089041035016	Wavy Washer (M6).....	1
25	089041035047	Bolt (M5, Hex Soc. Hd.)	1
26	089041035046	Dust Port	1
27	089041035704	Dust Bag Assembly.....	1

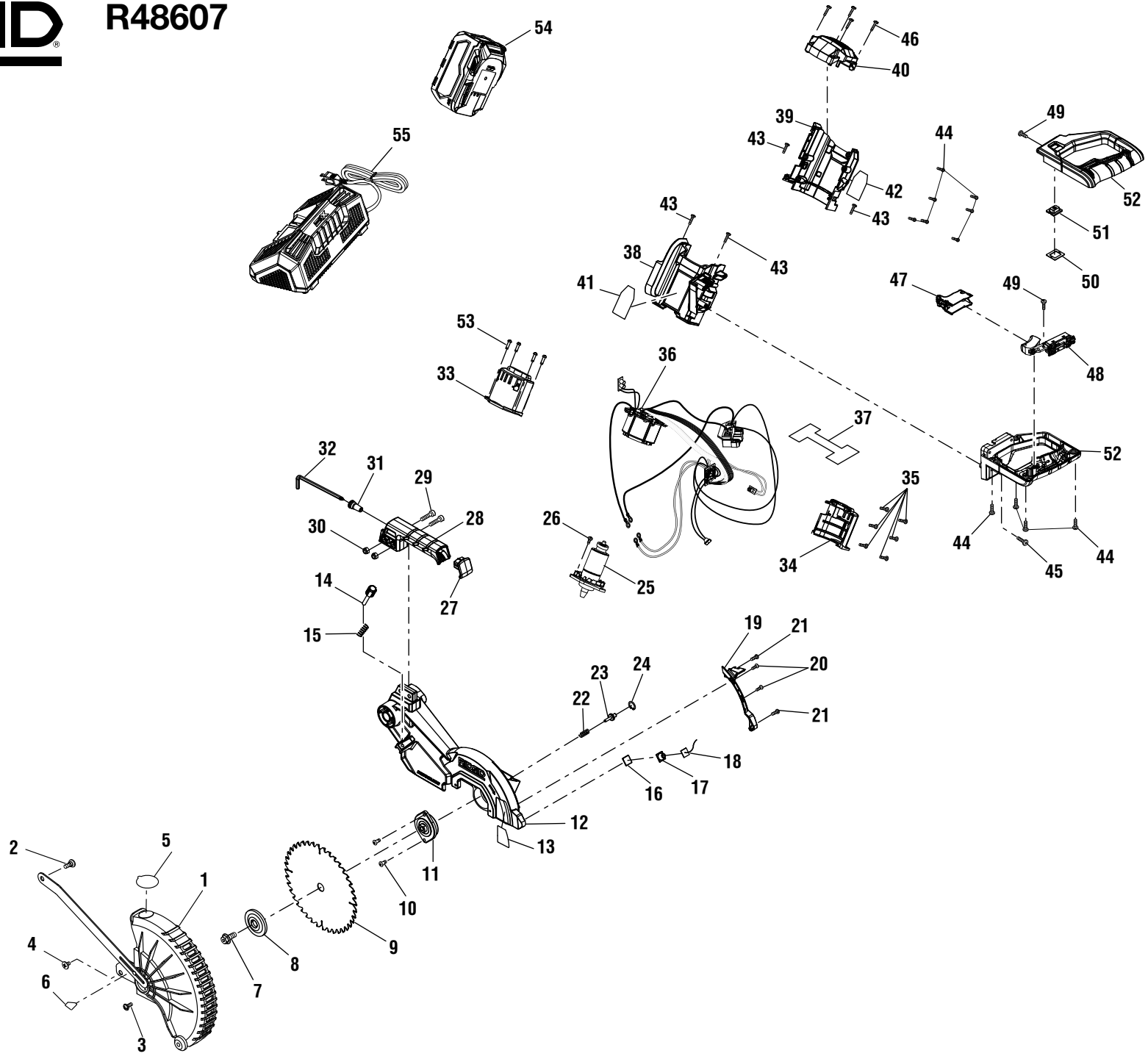


FIGURE C
FIGURA C

PARTS LIST FOR FIGURE C

KEY NO.	PART NUMBER	DESCRIPTION	QTY	KEY NO.	PART NUMBER	DESCRIPTION	QTY
1	089041035719	Lower Blade Guard Assembly (Inc. Key Nos. 5-6).....	1	29	080016005060	Bolt (M6 x 25 mm, Hex Soc. Hd.)	2
2	089006017042	Screw (M6, Special)	1	30	080016005059	Hex Nut (M6)	2
3	089006017041	Screw (M4 x 10 mm, Cheese Hd.)	1	31	089041035050	Wrench Holder	1
4	089006017040	Screw (M5, Special)	1	32	089006017009	Blade Wrench (5 mm Hex Key)	1
5	089100207097	No Hands Label	1	33	089041035079	Motor Housing (Upper).....	1
6	089100207051	Arbor Bolt Label	1	34	089041035080	Motor Housing (Lower).....	1
7	089006017064	Arbor Screw (M8 x 20 mm)	1	35	089041035081	Screw (M3 x 10 mm, Pan Hd.)	6
8	089041035054	Blade Washer	1	36	089041035717	Stator and Circuit Board Assembly (Inc. Key No. 18).....	1
9	089041035055	Blade	1	37	089041035907	French/Spanish Hang Tag.....	1
10	089041035056	Screw (M5 x 20 mm, Pan Hd.)	2	38	089041035707	Motor Housing Assembly (Upper) (Inc. Key No. 41).....	1
11	089041035705	Arbor Assembly.....	1	39	089041035723	Motor Housing Assembly (Lower) (Inc. Key No. 42).....	1
12	089041035706	Upper Guard Assembly (Inc. Key No. 13)	1	40	089041035093	End Cap	1
13	089041035906	Warning Label (Upper Guard)	1	41	089041035902	Warning Label (English).....	1
14	089041035052	Adjustable Knob.....	1	42	089041035905	Warning and Data Label.....	1
15	089041035053	Compression Spring	1	43	089041035096	Screw (M4 x 20 mm, Pan Hd.)	4
16	080016005019	Lens.....	1	44	089006017051	Screw (M4 x 16 mm, Pan Hd.)	12
17	089041035064	LED Cover	1	45	089041035142	Screw (M5 x 16 mm, Round Hd.).....	1
18	089041035065	LED.....	1	46	089041035092	Screw (M4 x 20 mm, Pan Hd.)	4
19	089041035134	Wire Cover.....	1	47	089041035720	Trigger Lock-Out Assembly.....	1
20	089041035067	Bolt (M3 x 8 mm, Hex Soc. Hd.)	2	48	089041035090	Main Switch.....	1
21	089041035129	Bolt (M3 x 15 mm, Hex Soc. Hd.)	2	49	089006017061	Screw (M4 x 12 mm)	2
22	089041035069	Compression Spring	1	50	089041035084	Sleeve.....	1
23	089041035070	Arbor Lock.....	1	51	089041035083	LED Button.....	1
24	089041035130	C-Ring	1	52	089041035722	D-Handle Assembly	1
25	089041035716	Armature Assembly	1	53	089041035110	Screw (M4 x 12 mm, Round Hd.).....	4
26	089041035136	Screw (M5 x 12 mm, Pan Hd.)	2	54	130350001	Battery Pack (R840089)	1
27	089041035116	End Cap	1	55	140320002	Battery Charger (R840095).....	1
28	089041035051	Carrying Handle	1				