

RIDGID
12 in. Sliding Compound Miter Saw
Model No. R4221
Repair Sheet

RIDGID
Scie à onglets combinés coulissante de 305 mm (12 po)
No. de modèle R4221
Feuille de réparation

RIDGID
Sierra ingleteadora compuesta deslizante de 305 mm (12 pulg.)
Núm. de modelo R4221
Lista de piezas de repuesto

RIDGID® R4221

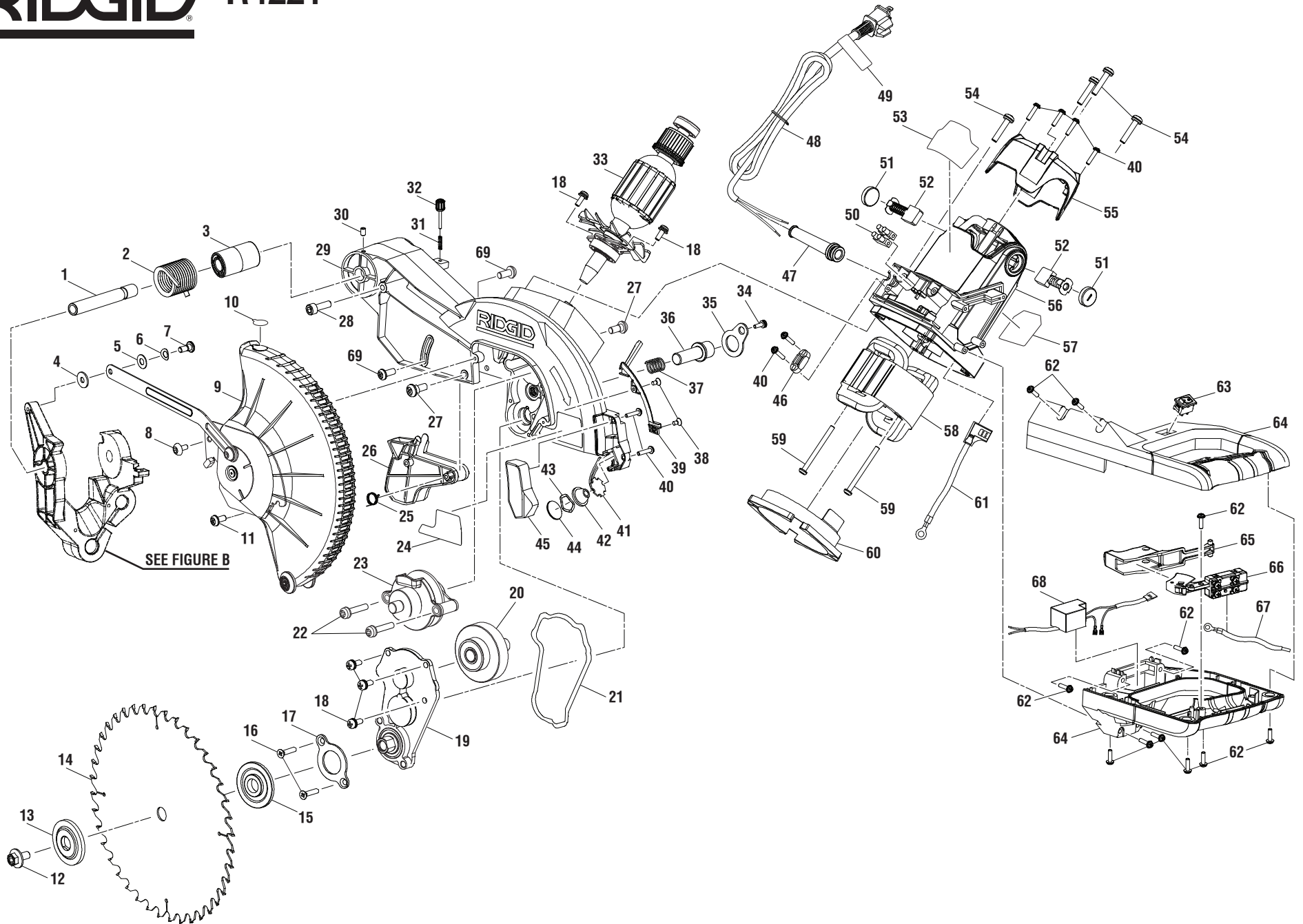


FIGURE A / FIGURA A

RIDGID 12 in. MITER SAW – MODEL NO. R4221

The model number will be found on a label attached to the housing. Always mention the model number in all correspondence regarding your **MITER SAW** or when ordering replacement parts.

PARTS LIST (FIGURE A)

KEY NO.	PART NUMBER	DESCRIPTION	QTY	KEY NO.	PART NUMBER	DESCRIPTION	QTY
1	089041028001	Arm Pivot Pin.....	1	38	089041028018	Screw (M4 x 10 mm)	2
2	089041028002	Torsion Spring	1	39	089041028029	Wire Cover.....	1
3	089041028003	Spring Sleeve	1	40	089041028028	Screw (M4 x 18 mm)	8
4	089041028004	Washer (M6)	1	41	089041028027	LED Light.....	1
5	089041028005	Washer (M7)	1	42	089041028026	LED Cover	1
6	089041028006	Wavy Washer (M7).....	1	43	089041028231	Wavy Washer.....	1
7	089041028007	Shoulder Screw (M6).....	1	44	089041028024	LED Lens	1
8	089041028008	Shoulder Screw (M5).....	1	45	089041028023	LED Reflector	1
9	089041028703	Lower Guard Assembly (Inc. Key No. 10)	1	46	089041028050	Cord Clamp	1
10	089036005907	No Hands Warning Label	1	47	089041028049	Cord Guard.....	1
11	089041028143	Screw (M8 x 20 mm, Pan Hd.)	1	48	089041028047	Power Cord	1
12	089041028040	Bolt (M10 x 18 mm, Hex Flange Hd.)	1	49	089041028911	Cord Wrap Label (French/Spanish)	1
13	089041028041	Outer Flange.....	1	50	089041028048	Terminal Block.....	1
14	089041028912	Blade (12 in.).....	1	51	089041028056	Brush Cap	2
15	089041028042	Inner Flange.....	1	52	089041028055	Brush Assembly	2
16	089041028206	Screw (M5 x 25 mm)	2	53	089041028901	Warning Label (English).....	1
17	089041028207	Bearing Plate	1	54	089041028051	Screw (M6 x 30 mm)	4
18	089041028249	Screw (M5 x 20 mm)	5	55	089041028052	End Cap.....	1
19	089041028702	Arbor Shaft Assembly	1	56	089041028701	Motor Housing Assembly (Inc. Key Nos. 53 and 57)	1
20	089041028716	Idler Gear Assembly	1				
21	089041028272	Paper Washer (Gasket).....	1	57	089041028902	Data Label	1
22	089041028031	Screw (M5 x 31 mm)	2	58	089041028058	Field.....	1
23	089041028715	Bevel Gear Shaft Assembly.....	1	59	089041028060	Screw (M5 x 60 mm)	2
24	089041028905	Arbor Screw Direction Label	1	60	089041028061	Fan Baffle	1
25	089041028017	Torsion Spring	1	61	089041028059	Motor Wire Lead w/Terminals.....	1
26	089041028015	Rear Guard	1	62	089041028062	Screw (M4 x 14 mm)	11
27	089041028016	Shoulder Screw (M5).....	2	63	089041028057	LED Switch.....	1
28	089041028070	Screw (M8 x 20 mm)	1	64	089041028709	Handle Assembly	1
29	089041028717	Upper Guard w/Gear Box Assembly.....	1	65	089041028064	Switch Trigger.....	1
30	089041028071	Screw (M5 x 8 mm)	1	66	089041028065	Main Switch.....	1
31	089041028074	Compression Spring.....	1	67	089041028066	Inner Wire Lead w/Terminal	1
32	089041028073	Depth Stop Knob.....	1	68	089041028063	Power Supply	1
33	089041028707	Armature Assembly	1	69	089041028200	Screw (M5 x 12 mm, Pan Hd.)	1
34	089041028022	Screw (M4 x 15 mm)	1				
35	089041028021	Lock Pin Cover.....	1				
36	089041028020	Lock Pin.....	1				
37	089041028019	Compression Spring.....	1				

Not Shown:

991000780
(Rev:02)
9-21-17

Operator's Manual

RIDGID R4221

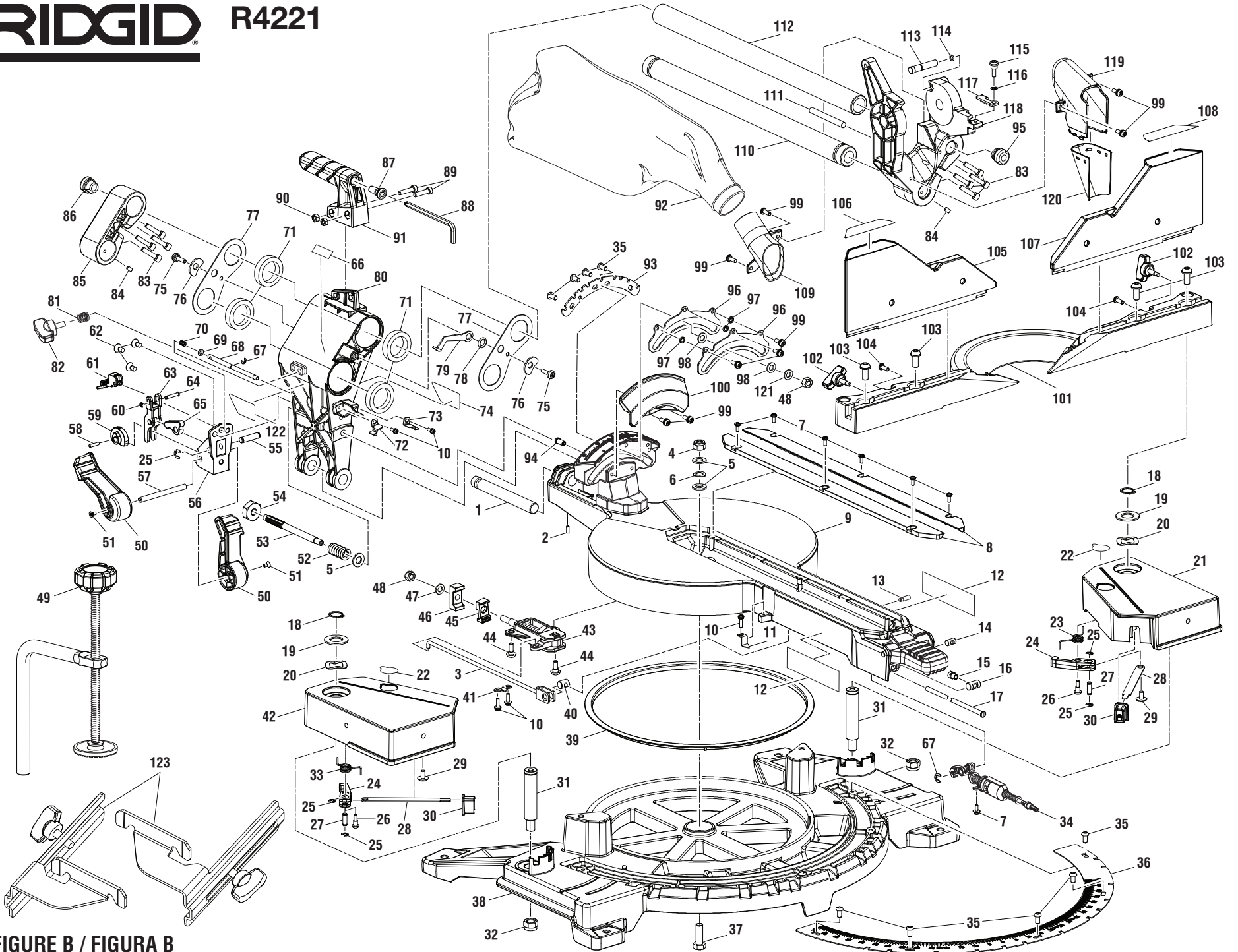


FIGURE B / FIGURA B

RIDGID 12 in. MITER SAW – MODEL NO. R4221

The model number will be found on a label attached to the housing. Always mention the model number in all correspondence regarding your **MITER SAW** or when ordering replacement parts.

PARTS LIST (FIGURE B)

KEY NO.	PART NUMBER	DESCRIPTION	QTY	KEY NO.	PART NUMBER	DESCRIPTION	QTY
1	089041028199	Pivot Bracket Pin.....	1	32	089041028089	Nut (M12).....	2
2	089041028113	Set Screw (M6 x 10 mm).....	1	33	089041028080	Spring.....	1
3	089041028103	Shaft.....	1	34	089041028722	Detent Lock Assembly.....	1
4	089041028116	Lock Nut (M10).....	1	35	089041028094	Screw (M6 x 10 mm).....	9
5	089041028112	Washer (M10).....	3	36	089041028093	Miter Scale.....	1
6	089041028117	Saddle Washer (M10).....	1	37	089041028092	Bolt (M10 x 42 mm).....	1
7	089041028128	Screw (M4 x 10 mm, Pan Hd.).....	7	38	089041028228	Base.....	1
8	089041028712	Throat Plate Set.....	1	39	089041028106	Cushion.....	1
9	089041028723	Miter Table and Bevel Bracket Assembly.....	1	40	089041028105	Pin (M6).....	1
10	089041028022	Screw (M4 x 15 mm).....	5	41	089041028104	Clamp.....	1
11	089041028118	Miter Indicator.....	1	42	089041028713	Left Extension Table (Inc. Key No. 22).....	1
12	089041028906	Crown Instruction Label.....	2	43	089041028719	Miter Lock Assembly.....	1
13	089041028107	Pin.....	1	44	089041028101	Shoulder Screw (M6).....	2
14	089041028135	Nut (M5).....	1	45	089041028099	Front Shoe.....	1
15	089041028139	Shoulder Screw (M6).....	1	46	089041028097	Rear Shoe.....	1
16	089041028138	Nut.....	1	47	089041028096	Washer (M8).....	1
17	089041028137	Screw Rod.....	1	48	089041028095	Lock Nut (M8).....	2
18	089041028076	Spring Clip.....	2	49	089041028711	Work Clamp Assembly.....	1
19	089041028077	Washer.....	2	50	089041028188	Bevel Lock Handle.....	2
20	089041028078	Wavy Washer.....	2	51	089041028018	Screw (M4 x 10 mm).....	2
21	089041028714	Right Extension Table (Inc. Key No. 22).....	1	52	089041028232	Compression Spring.....	1
22	089036005907	No Hands Label.....	2	53	089041028187	Bevel Lock Shaft.....	1
23	089041028090	Torsion Spring.....	1	54	089041028110	Nut (M10).....	1
24	089041028081	Table Detent.....	2	55	089041028191	Pin.....	1
25	089041028082	Clip.....	5	56	089041028190	Bracket.....	1
26	089041028084	Shoulder Screw (M6).....	2	57	089041028189	D-Shaft.....	1
27	089041028083	Shaft.....	2	58	089041028198	Cylindrical Pin.....	1
28	089041028085	Pull Plate.....	2	59	089041028197	Bevel Lock Cam.....	1
29	089041028086	Screw (M6 x 7 mm).....	2	60	089041028122	Clip.....	1
30	089041028087	Release Button.....	2	61	089041028196	Stop Handle.....	1
31	089041028088	Pin.....	2	62	089041028195	Screw (M6 x 12 mm, Phillips Hd.).....	3

*** Standard Hardware Item – May Be Purchased Locally

RIDGID 12 in. MITER SAW – MODEL NO. R4221

The model number will be found on a label attached to the housing. Always mention the model number in all correspondence regarding your **MITER SAW** or when ordering replacement parts.

PARTS LIST (FIGURE B)

KEY NO.	PART NUMBER	DESCRIPTION	QTY	KEY NO.	PART NUMBER	DESCRIPTION	QTY
63	089041028194	Rocker	1	94	089041028167	Adjustment Knob.....	1
64	089041028193	Bracket Pin.....	1	95	089041028233	Rubber Grommet.....	1
65	089041028192	Bevel Lock Rocker	1	96	089041028161	Lock Plate.....	2
66	089041028907	Crown Molding Label	1	97	089041028162	Washer	3
67	089041028108	Clip	2	98	089041028163	Washer	2
68	089041028182	Bevel Detent Shaft	1	99	089041028043	Screw (M5 x 15 mm)	9
69	089041028069	Washer (M6)	1	100	089041028165	Dust Cover	1
70	089041028251	Compression Spring.....	1	101	089041028140	Fixed Fence.....	1
71	089041028179	Felt Seal.....	4	102	089041028141	Fence Lock Knob	2
72	089041028186	Bevel Indicator (Left)	1	103	089041028142	Screw (Round Hd.)	4
73	089041028185	Bevel Indicator (Right)	1	104	089041028143	Screw (M8 x 20 mm, Pan Hd.)	2
74	089041028908	Bevel Instruction Label (Right)	1	105	089041028705	Sliding Fence (Left) (Inc. Key No. 106)	1
75	089041028172	Shoulder Screw (M5).....	2	106	089041028903	Left Sliding Fence Label.....	1
76	089041028173	Relief Paddle	2	107	089041028706	Sliding Fence (Right) (Inc. Key No. 108).....	1
77	089041028174	Bearing Plate.....	2	108	089041028904	Right Sliding Fence Label	1
78	089041028175	O-Ring	1	109	089041028157	Dust Chute (Rear)	1
79	089041028176	Stop Plate.....	1	110	089041028156	Stop Rail.....	1
80	089041028718	Bevel Pivot Bracket Assembly	1	111	089041028155	Stop Pin.....	1
81	089041028178	Compression Spring.....	1	112	089041028154	Rail.....	1
82	089041028177	Knob.....	1	113	089041028153	Head Lock Pin	1
83	089041028151	Bolt (M6 x 25 mm)	8	114	089041028152	O-Ring	1
84	089041028071	Screw (M5 x 8 mm)	2	115	089041028146	Shoulder Screw (M5)	1
85	089041028168	Bracket (Rear Rail).....	1	116	089041028147	Wavy Washer.....	1
86	089041028150	Clamp	1	117	089041028148	Height Adjustment Plate.....	1
87	089041028171	Wrench Holder.....	1	118	089041028149	Knuckle.....	1
88	089041028935	Blade Wrench	1	119	089041028145	Dust Chute (Front)	1
89	089041028170	Screw (M6 x 25 mm)	2	120	089041028144	Dust Chute (Soft).....	1
90	089041028009	Hex Nut (M6)	2	121	089041028234	Washer	1
91	089041028169	Carry Handle	1	122	089041028913	Bevel Instruction Label (Left).....	1
92	089041028710	Dust Bag Assembly	1	123	089041028721	Crown Stop Kit (Optional).....	1
93	089041028166	Bevel Scale.....	1				

*** Standard Hardware Item – May Be Purchased Locally