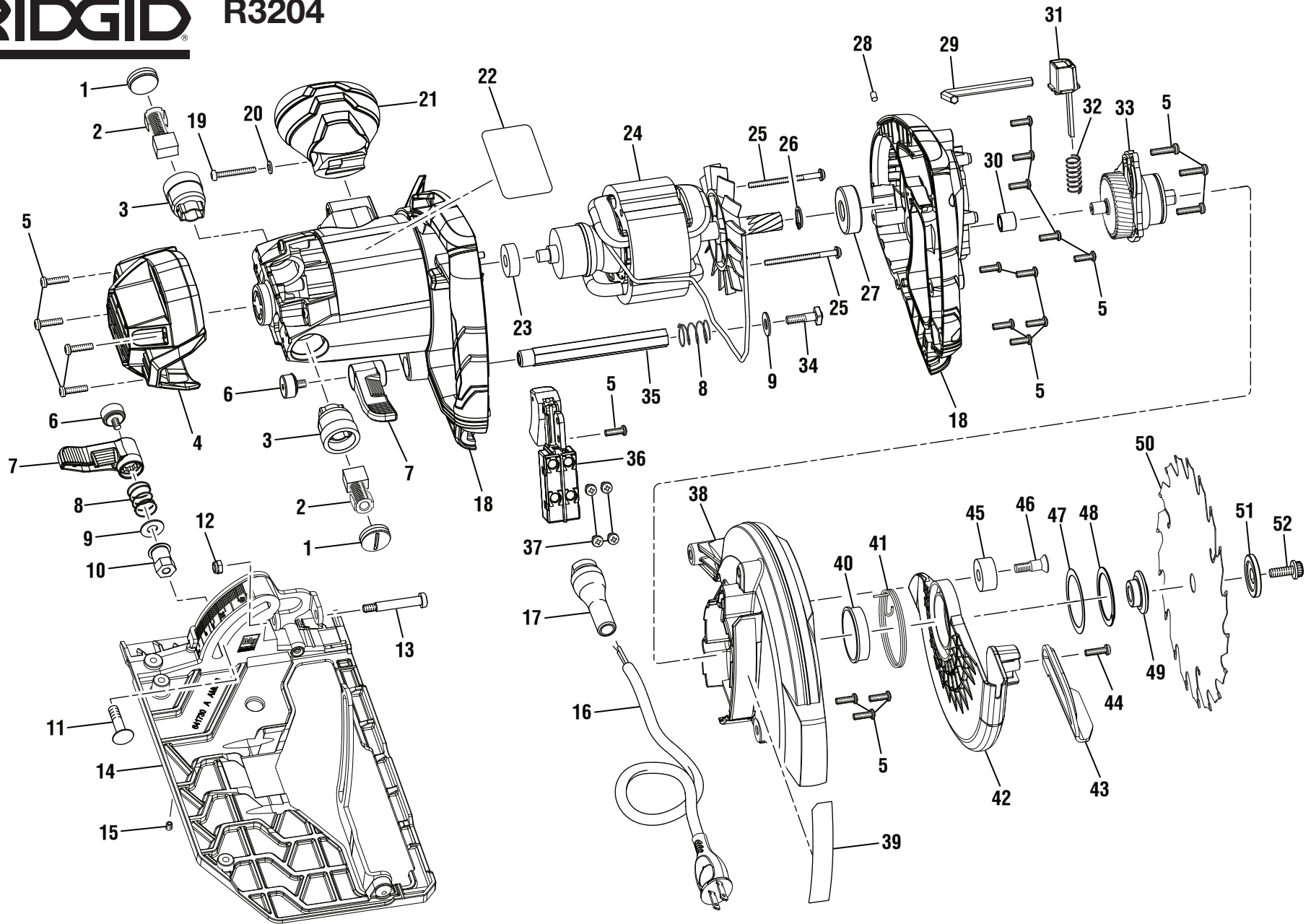


# RIDGID® R3204



**▲ WARNING:** The assembly shown represents an important part of the Double Insulated System. To avoid the possibility of alteration or damage to the System, service should be performed by your nearest authorized service center.

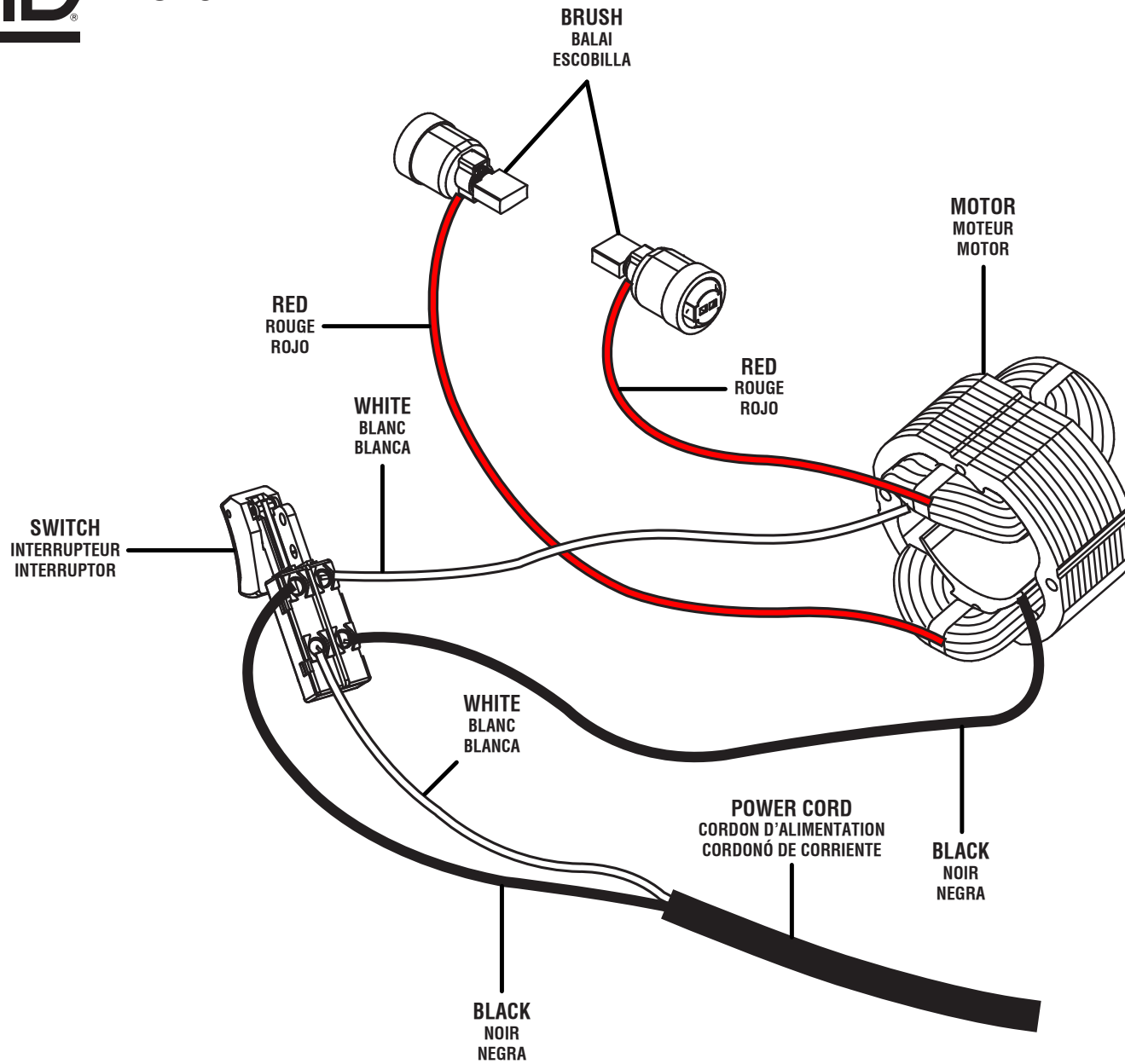
**▲ AVERTISSEMENT :** L'ensemble illustré représente une partie importante du système à isolation double. Afin d'éviter la possibilité de modification ou de dommage au système, la réparation ne doit être effectuée que par votre centre de réparation commerciale autorisé.

**▲ ADVERTENCIA:** El conjunto que se ilustra representa una parte importante del Sistema de Aislamiento Doble. Para evitar la posibilidad de alteración o daño del sistema, la reparación debe ser efectuada en su centro de servicio autorizado.

# RIDGID® R3204

KEY P/N	DESCRIPTION	QTY	KEY P/N	DESCRIPTION	QTY	KEY P/N	DESCRIPTION	QTY
1 512010001	Brush Cap.....	2	19 660024011	Screw (M4 x 28 mm, T20 Torx Pan Hd.).....	1	37 660320001	Screw (M3.5 x 7 mm, Pan Hd.).....	4
2 290069090	Brush Assembly.....	2	20 680865001	Washer (OD8.5 x ID4.2 x 1t) .....	1	38 641729006	Upper Blade Guard.....	1
3 513668001	Brush Holder Assembly .....	2	21 522630003	Front Handle .....	1	39 940533016	Depth Scale Label.....	1
4 525516001	End Cap .....	1	22 941488062	Data Label.....	1	40 514307001	Sleeve .....	1
5 660024052	Screw (M4 x 14 mm, Pan Hd.).....	21	23 681304001	Ball Bearing (608-2RS).....	1	41 680672008	Torsion Spring.....	1
6 661938001	Screw (1/4-20 x 17 mm, T20 Torx).....	2	24 291156001	Motor Assembly.....	1	42 642071001	Lower Blade Guard.....	1
7 522691002	Lever .....	2	25 660156002	Screw w/Washer (M4 x 50 mm, Pan Hd.).....	2	43 634875001	Lower Guard Lever .....	1
8 681035001	Compression Spring .....	2	26 691140001	Retaining Ring.....	1	44 660165013	Screw (M4 x 12 mm, T20 Torx Pan Hd.) .....	1
9 631771002	Washer (OD16 x ID6.8 x 1t) .....	2	27 692071004	Ball Bearing (6201-2ZZ).....	1	45 560990003	Rubber Stopper .....	1
10 660841004	Hex Nut (1/4-20).....	1	28 560219006	Rubber Plug .....	1	46 661245001	Screw (M6 x 20 mm, T30 Torx Flat Hd.).....	1
11 660858008	Carriage Bolt (1/4-20 x 7/8 in.).....	1	29 680002006	#5 Hex Key (M6) .....	1	47 631771001	Washer (OD40 x ID34 x 0.3t) .....	1
12 670974002	Lock Nut (M5) .....	1	30 671943001	Bushing (OD12 x ID8 x 10t) .....	1	48 691197001	Retaining Ring.....	1
13 660145009	Screw (M5 x 40 mm, T25 Torx Pan Hd.) .....	1	31 304390002	Spindle Lock Assembly (Inc. Key No.32) .....	1	49 610120006	Inner Blade Washer.....	1
14 304267005	Base Assembly .....	1	32 672028003	Compression Spring .....	1	50 681444002	Blade (6-1/2 in.) .....	1
15 660066005	Screw (#8-32 x 1/4 in., T8 Torx Soc. Hd.).....	1	33 220226001	Gear Shaft w/Cover Assembly...1		51 610121003	Outer Blade Washer.....	1
16 730377060	Power Cord.....	1	34 660865002	Shoulder Screw (1/4-20, Special Sq. Hd.).....	1	52 660144008	Screw w/Washer (M6 x 16 mm, Hex Soc. Hd.).....	1
17 551060002	Bend Relief .....	1	35 672027003	Hex Bar .....	1	<b>NOT SHOWN</b>		
18 202913001	Motor Housing Assembly (Inc. Key No. 22) .....	1	36 760677015	Switch Trigger .....	1	990000385	Operator's Manual	

12-5-16  
(Rev:02)



**WIRING DIAGRAM**  
**SCHÉMA DE CÂBLAGE**  
**DIAGRAMA DE CABLEADO**