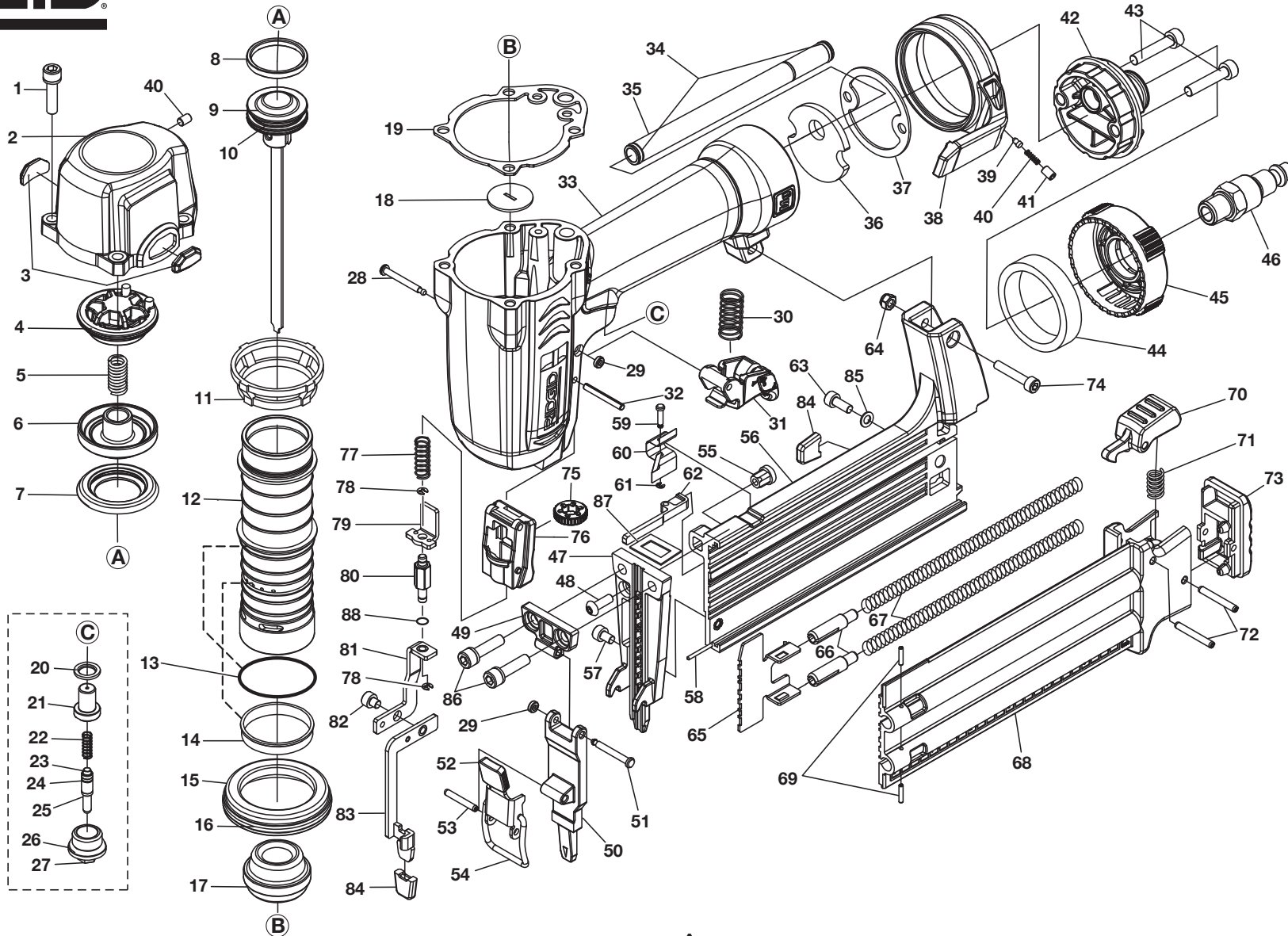


RIDGID R213BNA



⚠ DANGER: Do not use oxygen, combustible gases, or bottled gases as a power source for this tool. The tool will explode and cause death or serious injury.

⚠ DANGER : Ne pas utiliser de l'oxygène ou des gaz combustibles ou en bouteille pour alimenter l'outil. L'outil exploserait, causant des blessures graves ou mortelles.

⚠ PELIGRO: No utilice oxígeno, gases combustibles ni gases embotellados como fuente de energía para esta herramienta. La herramienta explotará y causará la muerte o lesiones serias.

⚠ WARNING: Disconnect the tool from the air supply before performing maintenance. Failure to do so could result in serious personal injury.

⚠ AVERTISSEMENT : Débrancher l'outil de la source d'air avant tout entretien. Ne pas prendre cette précaution peut entraîner des blessures graves.

⚠ ADVERTENCIA: Desconecte la herramienta del suministro de aire antes de efectuar tareas de mantenimiento. La inobservancia de esta advertencia puede causar lesiones serias.



R213BNA Brad Nailer

KEY	P/N	DESCRIPTION	QTY	KEY	P/N	DESCRIPTION	QTY	KEY	P/N	DESCRIPTION	QTY
1	079001001001	BOLT ASSY (M5 x 0.8-20 + Dp5) ..4		42	079001001042	END CAP (NPT 1/4 in).....1		79	079001001078	WORK CONTACT ELEMENT1	
2	079001001002	CAP1		43	079001001043	BOLT (HEX SOC. HD.) (M5 x 0.8-25)2		80	079007001115	ADJUST ROD UNIT.....1	
3	079001001003	GUIDE COVER2		44	079001001044	MUFFLER.....1		81	079007001082	CONTACT MECHANISM B UNIT ..1	
4	079001001004	COLLAR1		45	079001001045	GUIDE PLATE.....1		82	079007001083	BOLT (HEX SOC. HD.) (M4 x 0.7-04)1	
5	079001001005	COMPRESSION SPRING.....1		46	079001001046	AIR PLUG (NPT 1/4 in.-18).....1		83	079007001084	CONTACT MECHANISM A1	
6	079001001006	HD.VALVE PISTON.....1		47	079007001110 *	DRIVER GUIDE.....1		84	079007001093	NO-MAR PAD2	
7	079001001007	SEAL1		48	079007001049	HEX BOLT (HALF ROUND HD.) (M4 x 0.7-12)1		85	079007001095	FLAT WASHER (D10 X D4 X T1)....1	
8	079001001008	PISTON RING.....1		49	079007001111 *	DRIVER GUIDE COVER B.....1		86	079003001054	BOLT ASSY (M5 X 0.8-20 X d5) (3M2353)2	
9	079007001700 *	DRIVER UNIT1		50	079007001051	DRIVER GUIDE COVER A1		87	079007001112 *	JOINT GUIDE1	
10	079001001010	O-RING (23 x 2) (2023).....1		51	079007001052	FIXED PIN.....1		88	079007001116	O-RING1	
11	079001001011	COLLAR1		52	079003001062	PUSHER CUSHION1		89	079001001082	OVERHAUL KIT – NOT SHOWN (INC. KEY NO. 4, 7, 8, 13, 14, 16, 17, 19, 20-27, AND 29, PLUS LUBRICANT)1	
12	079001001012	CYLINDER.....1		53	079003001064	SPIRAL PINS (Dp3-20).....1		90	079007001113 *	DRIVER MAINTENANCE KIT – NOT SHOWN (INCL. KEY NO. 8-10, 17, AND 19, PLUS LUBRICANT)1	
13	079001001013	O-RING (32 x 2) (2032).....1		54	079007001055	LOCK HANDLE UNIT1		91	079007001114 *	DRIVER ASSEMBLY – NOT SHOWN (INCL. KEY NO. 8-10 PLUS LUBRICANT)1	
14	079001001014	CYLINDER RING.....1		55	079007001056	SQUARE NECK NUT.....1		92	079001001085	TRIGGER ASSEMBLY – NOT SHOWN (INCL. KEY NO. 20-27) ...1	
15	079001001015	CYLINDER SPACER (B18/50-A1 V.1)1		56	079007001057	MAGAZINE A.....1		93	079001001099	WRENCH KIT – NOT SHOWN (INCL. 3 mm AND 4 mm HEX KEYS ONLY).....1	
16	079001001016	O-RING (47.5 x 2) (S48).....1		57	079007001058	BOLT (HEX SOC. HD.) (M4 x 0.7-06)1		94	079001001907	TOOL BAG – NOT SHOWN1	
17	079001001017	BUMPER1		58	079007001059	FLAT BAR.....1		95	079001001088	GLASSES – NOT SHOWN1	
18	079007001018	DRIVER GUIDE.....1		59	079007001060	FIXED PIN.....1		96	079007001101	WARNING AND DATA LABEL – NOT SHOWN1	
19	079001001019	CYLINDER CAP SEAL.....1		60	079007001061	SPRING1		97	079001001092	LOGO LABEL – NOT SHOWN2	
20	079001001020	SEAL1		61	079007001062	E-RING (ETW1.5).....1		98	079007001098	MODEL LABEL (TOOL CASE).....1	
21	079001001021	TRIGGER VALVE HEAD.....1		62	079007001063	WORK CONTACT ELEMENT STOPPER.....1		99	983000615	OPERATOR'S MANUAL – NOT SHOWN1	
22	079001001022	SPRING1		63	079007001100	SCREW1		100	983000623	FASTENER GUIDE – NOT SHOWN1	
23	079001001023	PLUNGER1		64	079003001081	LOCK NUT (M4 x 0.8)2		101	079001001102	TRIGGER WRAP LABEL – NOT SHOWN1	
24	079001001024	O-RING (2.5 x 1.5) (S3).....1		65	079007001066	PUSHER.....1		102	079007001108	HANG TAG – NOT SHOWN1	
25	079001001025	O-RING (2.5 x 1.5) (S3).....1		66	079007001067	SHAFT2			10-27-09 (REV:08)		
26	079001001026	O-RING (13 x 2) (2013).....1		67	079007001068	PUSHER SPRING2					
27	079001001027	PLUNGER CAP1		68	079007001069	MAGAZINE B1					
28	079001001028	TRIGGER PIVOT PIN.....1		69	079007001070	SPRING PIN (Dp2-10)2					
29	079001001029	RETAINER2		70	079007001071	LATCH1					
30	079001001030	SPRING1		71	079007001072	LOCK SPRING1					
31	079001001031	TRIGGER UNIT.....1		72	079001001072	SPIRAL PINS (Dp3-24).....2					
32	079002001041	SPRING PIN (Dp3-25)1		73	079007001074	HOOD COVER.....1					
33	079007001701 *	TOOL BODY UNIT.....1		74	079001001074	BOLT (HEX SOC. HD.) (M4 x 0.7-25)1					
34	079001001033	O-RING (7.5 x 1.5) (S8).....2		75	079001001075	ADJUST KNOB1					
35	079001001034	LINK ROD.....1		76	079001001076	WORK CONTACT ELEMENT GUIDE1					
36	079001001036	FILTER1		77	079001001077	WORK CONTACT ELEMENT SPRING1					
37	079001001037	GASKET1		78	079001001051	E-RING (ETW2).....2					
38	079001001038	SPRING RETAINER1									
39	079001001039	POSITIONING SHAFT1									
40	079001001040	POSITIONING SPRING1									
41	079001001041	SCREW (HEX SOC. HD.) (M4 x 0.7-06)2									

* Note: Changes start with serial number:
AW083344552