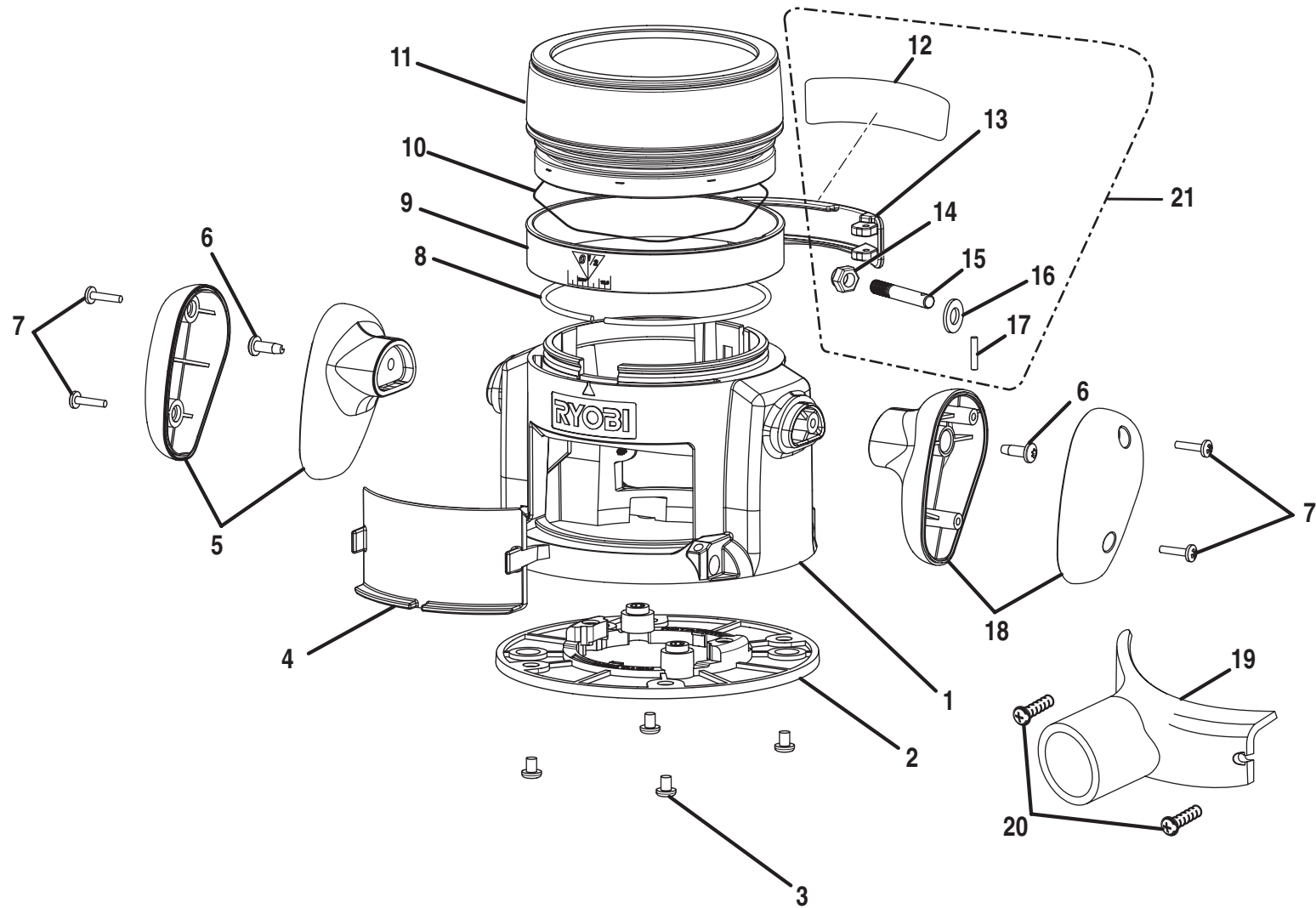


# RYOBI ROUTER FIXED BASE – MODEL NUMBER R181FB



**WARNING:** Improper repair of a double insulated tool can result in damages to the double insulation system possibly causing electrical shock or electrocution. Any repairs requiring disassembly of your tool requires safety testing and should only be performed by a Ryobi Authorized Service Center. For the service center nearest you call 1-800-525-2579.

## RYOBI ROUTER FIXED BASE – MODEL NUMBER R181FB

The model number will be found on a plate attached to the base. Always mention the model number in all correspondence regarding your **ROUTER** or when ordering repair parts.

### PARTS LIST

KEY NO.	PART NUMBER	DESCRIPTION	QTY.
1	983305-201	BASE W/PIN.....	1
2	983306-201	SUBBASE W/INSERTS.....	1
3	998586-001	* SCREW (10-32 X 1/4 in. PAN HD.).....	4
4	983308-001	CHIP SHIELD.....	1
5	982991-001	HANDLE ASSEMBLY.....	1
6	983699-128	* SCREW (10-24 X 9/16 in. TORX PAN HD.).....	2
7	617966-030	* SCREW (8-10 X 5/8 in. PAN HD.).....	4
8	983689-001	SPLINE.....	1
9	983422-001	ZERO RESET RING.....	1
10	984673-001	RESET RING SPRING.....	1
11	983307-001	DEPTH ADJUSTMENT RING.....	1
12	983463-001	INFORMATION PLATE.....	1
13	983451-201	LEVER W/INFORMATION PLATE.....	1
14	703477-057	* HEX LOCK NUT (1/4-20).....	1
15	982972-001	LEVER PIN.....	1
16	706382-357	WASHER.....	1
17	982948-032	NEEDLE ROLLER PIN.....	1
18	983474-001	RIGHT HANDLE SET.....	1
19	983311-001	DUST NOZZLE.....	1
20	643115-005	* SCREW (6-32 x 3/8 in. PAN HD.).....	2
21	974785-003	LOCK LEVER REPAIR KIT (INCLUDES KEY NOS. 12-17).....	1

\* Standard Hardware Item – May Be Purchased Locally