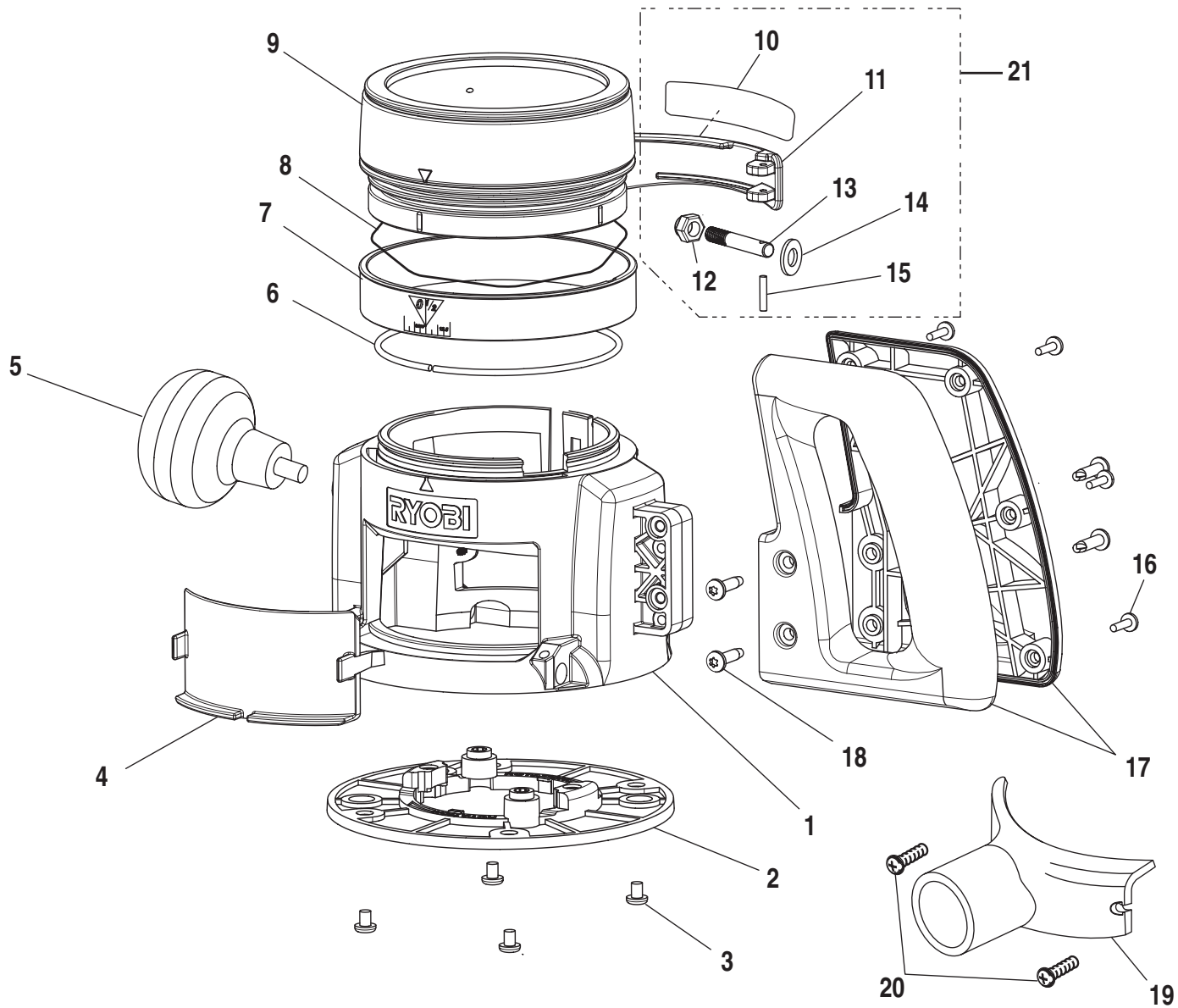


RYOBI ROUTER D HANDLE - MODEL NUMBER R181D



WARNING: Improper repair of a double insulated tool can result in damages to the double insulation system possibly causing electrical shock or electrocution. Any repairs requiring disassembly of your tool requires safety testing and should only be performed by a Ryobi Authorized Service Center. For the service center nearest you call 1-800-525-2579.

RYOBI ROUTER D HANDLE – MODEL NUMBER R181D

The model number will be found on a plate attached to the base. Always mention the model number in all correspondence regarding your **ROUTER** or when ordering repair parts.

PARTS LIST

KEY NO.	PART NUMBER	DESCRIPTION	QTY.
1	984170-001	D-HANDLE BASE	1
2	983306-201	SUBBASE W/ INSERTS.....	1
3	998586-001	* SCREW (10-32 X 1/4 in. PAN HD.)	4
4	983308-001	CHIP SHIELD.....	1
5	983506-001	KNOB.....	1
6	983689-001	SPLINE	1
7	983422-001	ZERO RESET RING	1
8	984673-001	RESET RING SPRING	1
9	983307-001	DEPTH ADJUSTMENT RING.....	1
10	983958-001	INFORMATION PLATE.....	1
11	983451-206	LEVER W/INFORMATION PLATE (INCLUDES KEY NO. 10)	1
12	703477-057	HEX LOCK NUT (1/4-20)	1
13	982972-001	LEVER PIN.....	1
14	706382-357	WASHER.....	1
15	982948-032	PIN NEEDLE ROLLER	1
16	617966-028	* SCREW (8-10 X 1/2 in. PAN HD.)	4
17	984171-001	D-HANDLE.....	1
18	983699-128	* SCREW (10-24 X 9/16 in. TORX PAN HD.).....	4
19	974785-003	DUST NOZZLE (INCLUDES KEY NO. 20)	1
20	643115-005	* SCREW (6-32 X 3/8 in. PAN HD.)	2
21	000727006	LOCK LEVER REPAIR KIT (INCLUDES KEY NOS. 10-15)	1

*** Standard Hardware Item – May Be Purchased Locally**