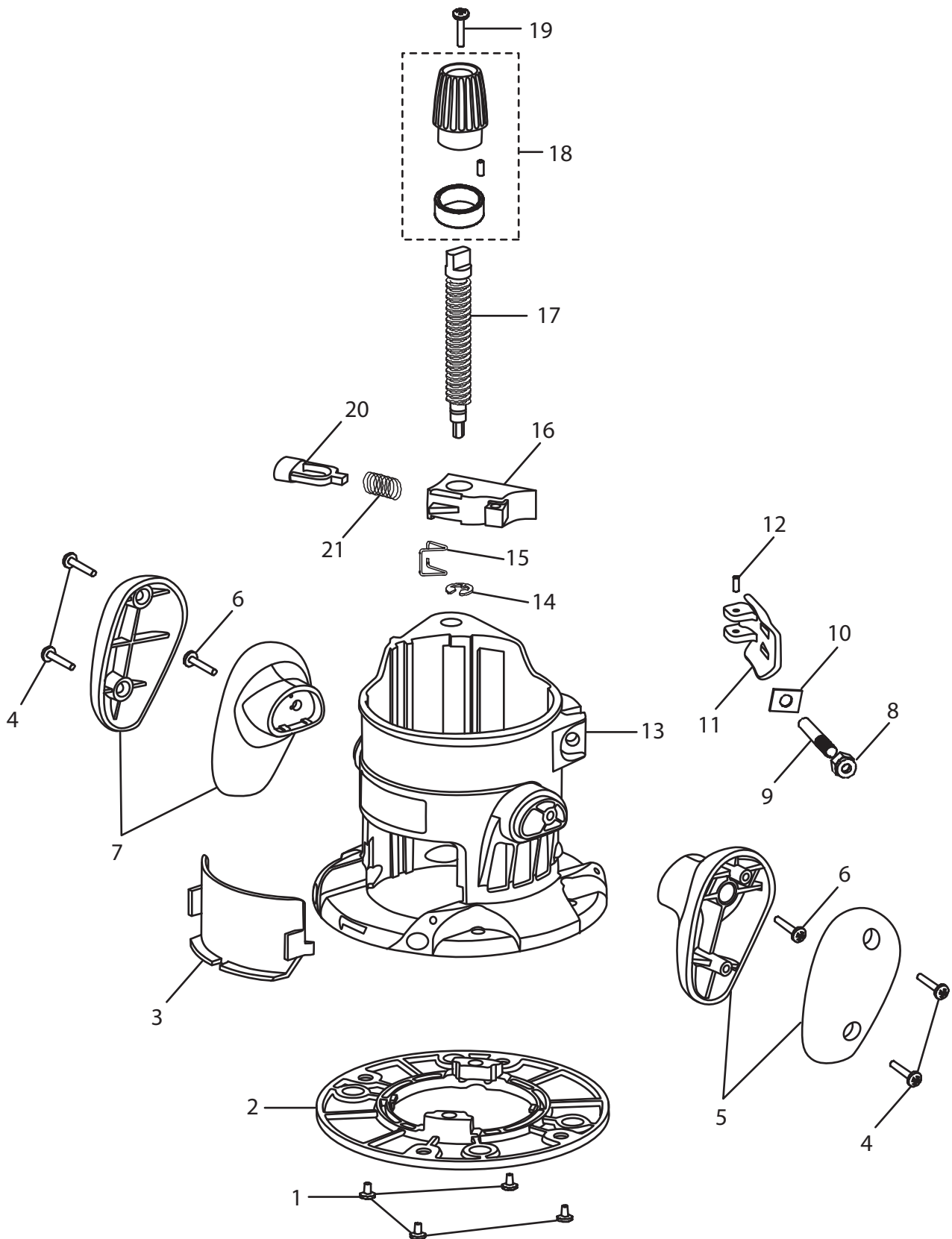


RYOBI FIXED BASE ROUTER - MODEL NUMBER R163



RYOBI FIXED BASE ROUTER – MODEL NUMBER R163

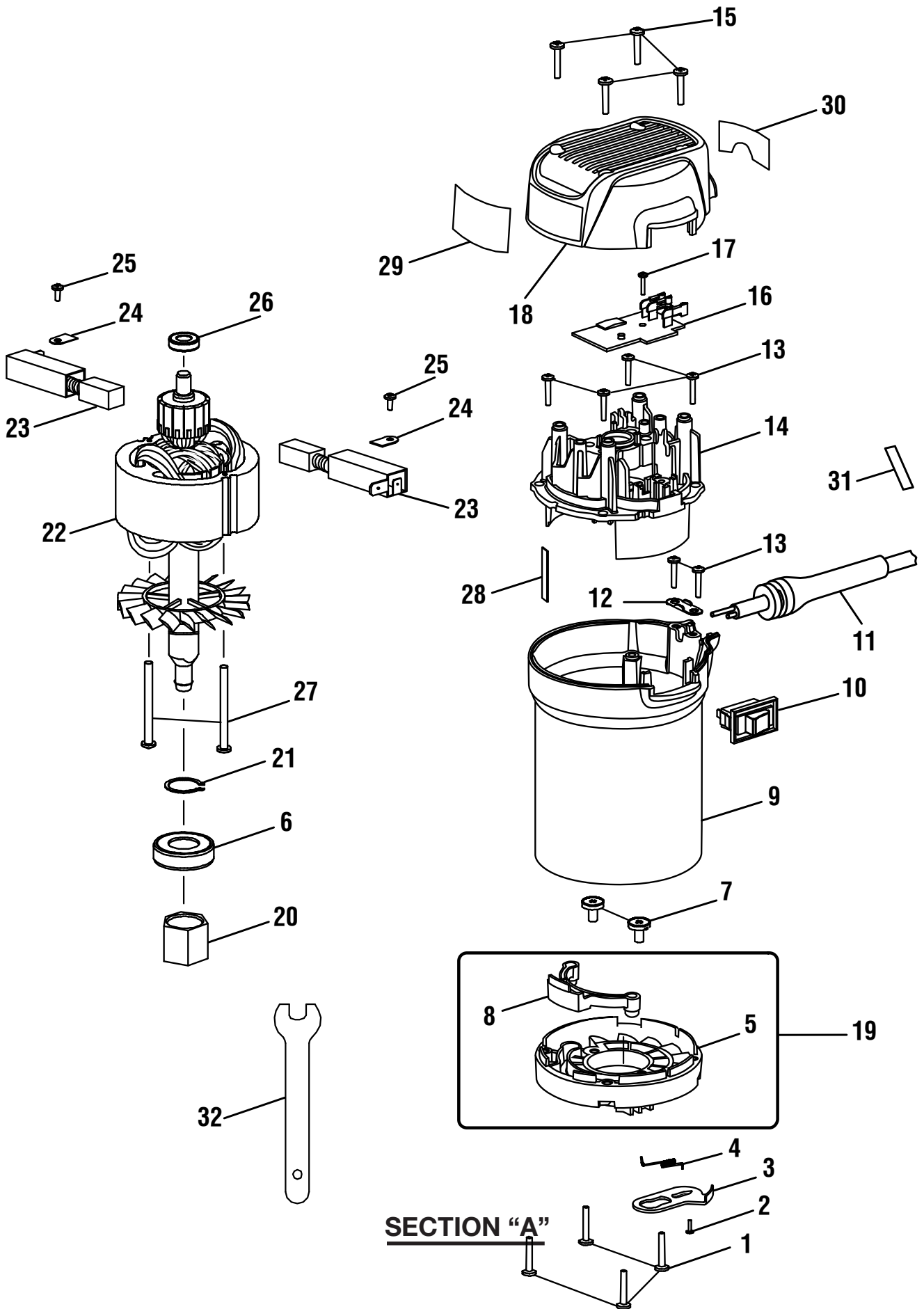
The model number will be found on a label attached to the motor housing. Always mention the model number in all correspondence regarding your **ROUTER** or when ordering repair parts.

PARTS LIST

KEY NO.	PART NUMBER	DESCRIPTION	QTY.
1	660136001	Screw (10-32 x 1/4 in.)	4
2	200234010	Subbase Assembly.....	1
3	514415001	Chip Shield.....	1
4	660161001	Screw (#8-10 x 5/8 in. Philips Pan Hd.)	4
5	200244001	Right Handle Assembly.....	1
6	660062005	Screw (#10-24 x 9/16 in. Torx Recess Pan Hd.)	2
7	200235001	Left Handle Assembly	1
8	671243001	Hex Lock Nut (1/4-20)	1
9	671260001	Lever Pin.....	1
10	631421001	Wear Plate	1
11	641125001	Lock Lever.....	1
12	671247001	Roll Pin	1
13	200557001	Router Base/Spindle Lock Actuator Kit (Includes Key 3 on pages 4-5).....	1
14	671797001	E-Ring.....	1
15	671759001	Torsion Spring	1
16	641123001	Height Adjustment Bar	1
17	641124001	Height Adjust Screw.....	1
18	302148001	Depth Adjust/Zero Reset Ring Assembly.....	1
19	660440001	Screw (M3.5 x 12 mm Flat Hd.)	1
20	514418001	Quick Release Button.....	1
21	671758001	Compression Spring.....	1
22	901605010	Bag (Not Shown)	1

983000958
Operator's Manual (960001217)
2-8-13
(REV:05)

RYOBI FIXED BASE ROUTER – MODEL NUMBER R163



SECTION "A"

RYOBI FIXED BASE ROUTER – MODEL NUMBER R163

The model number will be found on a label attached to the motor housing. Always mention the model number in all correspondence regarding your **ROUTER MOTOR** or when ordering repair parts.

PARTS LIST FOR SECTION “A”

KEY NO.	PART NUMBER	DESCRIPTION	QTY.
1	660133010	Screw (8-18 x 24 Pan Hd.)	4
2	660929001	Screw (M3.5 x 14.5 Pan Hd.)	1
3	200557001	Router Base/Spindle Lock Actuator Kit (Included With Key 13 On Pages 2-3)	1
4	672090001	Torsion Spring	1
5	514543001	Bearing Frame.....	1
6	680769003	Ball Bearing (6003)	1
7	660299021	Screw (M5 x 13 mm Wafer Hd.)	2
8	290138021	LED Work Light Assembly.....	1
9	514412001	Motor Housing.....	1
10	760676001	On/Off Switch	1
11	290086037	Power Cord Assembly.....	1
12	5950101	Cord Clamp	1
13	660208052	Screw (M4 x 16 mm Pan Hd.)	6
14	514413001	Top Bearing Bracket.....	1
15	660103001	Screw (M0.17 x 3/4 in. Pan Hd.)	4
16	280013103	Circuit Board Assembly.....	1
17	660182003	Screw (6-19 x 5/16 in. Pan Hd.)	1
18	200452001	Upper Cap Assembly (Inc. Key Nos. 30 and 31).....	1
19	290286001	LED Work Light & Frame (Inc. key Nos. 5 and 8)	1
20	690190002	Collet Nut	1
21	671399001	Retaining Ring.....	1
22	290147098	Motor Assembly	1
23	290069107	Brush Assembly	2
24	630801001	Brush Tube Clamp.....	2
25	660371002	Screw (8-16 x 1/2 in. Pan Hd.)	2
26	680966001	Ball Bearing (CW 608RS).....	1
27	660928001	Screw (M4.3 x 56)	2
28	514266001	Chip.....	1
29	940054128	Logo Label.....	1
30	940077080	Data Label	1
31	940999110	Cord Label.....	1
32	671250001	Wrench	1

NOTE: The assembly shown represents an important part of the double insulated system. To avoid the possibility of alteration or damage to the system, service should be performed by your nearest authorized service center.