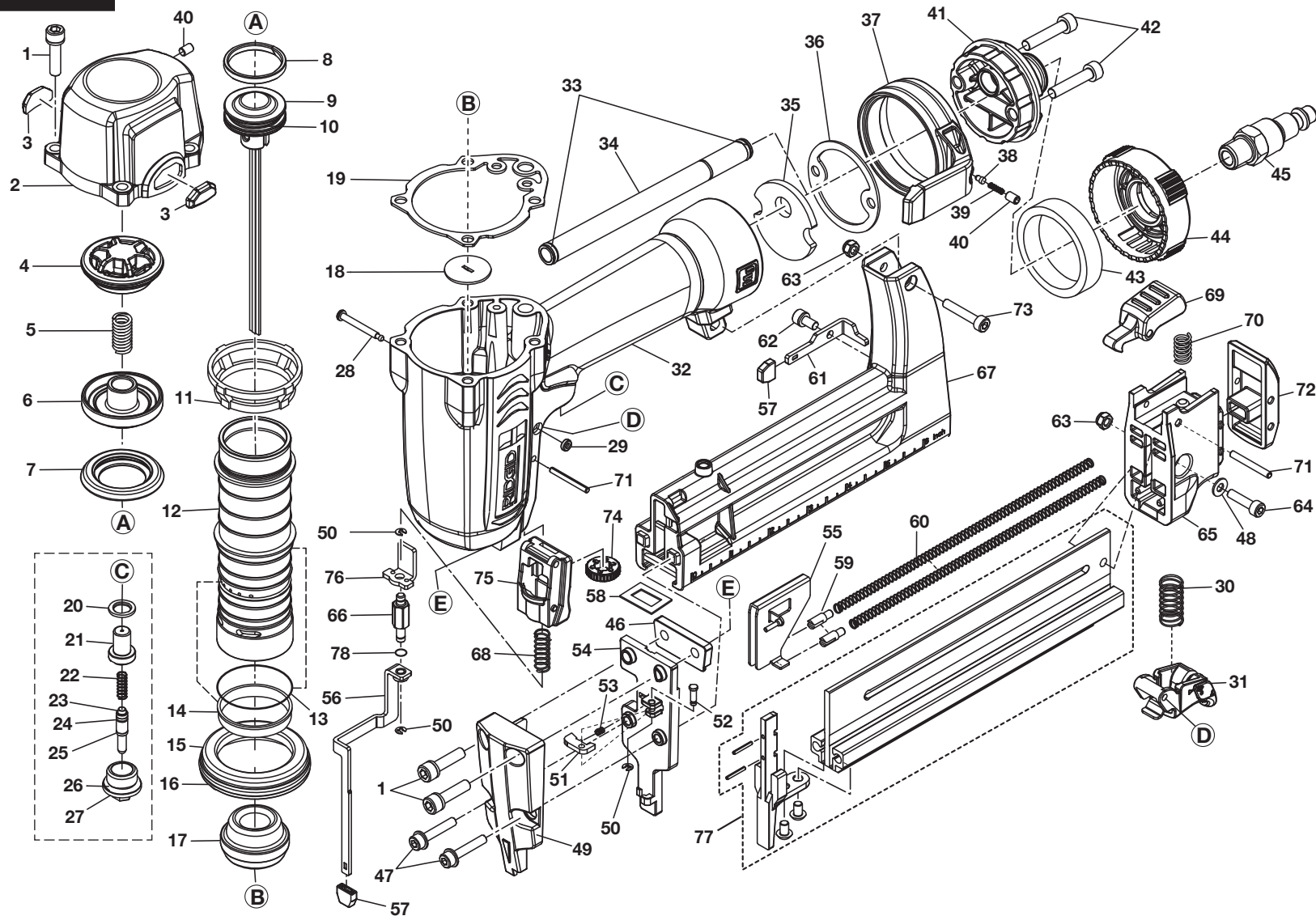


# RIDGID® R150FSA



**⚠ DANGER:** Do not use oxygen, combustible gases, or bottled gases as a power source for this tool. The tool will explode and cause death or serious injury.

**⚠ DANGER :** Ne pas utiliser de l'oxygène ou des gaz combustibles ou en bouteille pour alimenter l'outil. L'outil exploserait, causant des blessures graves ou mortelles.

**⚠ PELIGRO:** No utilice oxígeno, gases combustibles ni gases embotellados como fuente de energía para esta herramienta. La herramienta explotará y causará la muerte o lesiones serias.

**⚠ WARNING:** Disconnect the tool from the air supply before performing maintenance. Failure to do so could result in serious personal injury.

**⚠ AVERTISSEMENT :** Débrancher l'outil de la source d'air avant tout entretien. Ne pas prendre cette précaution peut entraîner des blessures graves.

**⚠ ADVERTENCIA:** Desconecte la herramienta del suministro de aire antes de efectuar tareas de mantenimiento. La inobservancia de esta advertencia puede causar lesiones serias.



# R150FSA Finish Stapler

| KEY | P/N          | DESCRIPTION                              | QTY | KEY | P/N          | DESCRIPTION  | QTY | KEY | P/N          | DESCRIPTION   | QTY |
|-----|--------------|--|-----|-----|--------------|--|-----|-----|--------------|---|-----|
| 1   | 079001001001 | BOLT ASSY (M5 x 0.8-20 + Dp5) ..         | 6   | 42  | 079001001043 | BOLT (HEX SOC. HD.) (M5 x 0.8-25) ..                       | 2   | 76  | 079001001078 | WORK CONTACT ELEMENT .....  | 1   |
| 2   | 079001001002 | CAP .....                                | 1   | 43  | 079001001044 | MUFFLER .....  | 1   | 77  | 079001001705 | * MAGAZINE AND DRIVER GUIDE ASSEMBLY .....  | 1   |
| 3   | 079001001003 | GUIDE COVER .....                        | 2   | 44  | 079001001045 | GUIDE PLATE .....  | 1   | 78  | 079007001116 | O-RING .....  | 1   |
| 4   | 079001001004 | COLLAR .....                             | 1   | 45  | 079001001046 | AIR PLUG (NPT 1/4 in.-18) .....                            | 1   | 79  | 079001001082 | OVERHAUL KIT – NOT SHOWN (INCL. KEY NO. 4, 7, 8, 13, 14, 16, 17, 19, 20-27, AND 29, PLUS LUBRICANT) ..... | 1   |
| 5   | 079001001005 | COMPRESSION SPRING .....                 | 1   | 46  | 079001001047 | GASKET .....   | 1   | 80  | 079007001183 | DRIVER MAINTENANCE KIT – NOT SHOWN (INCL. KEY NO. 8-10, 17 AND 19, PLUS LUBRICANT) .....                  | 1   |
| 6   | 079001001006 | HD.VALVE PISTON .....                    | 1   | 47  | 079001001048 | BOLT W/FLAT WASHER (M4 x 0.7-22 + Dp9 x t0.8) (3M23) ..... | 2   | 81  | 079007001184 | DRIVER ASSEMBLY – NOT SHOWN (INCL. KEY NO. 8-10 PLUS LUBRICANT) .....                                     | 1   |
| 7   | 079001001007 | SEAL .....                               | 1   | 48  | 079001001049 | FLAT WASHER (D9 x d4.2 x t0.8) .....                       | 1   | 82  | 079001001085 | TRIGGER ASSEMBLY – NOT SHOWN (INCL. KEY NO. 20-27) ...  | 1   |
| 8   | 079001001008 | PISTON RING .....                        | 1   | 49  | 079001001050 | RELIEF PLATE .....   | 1   | 83  | 079001001099 | WRENCH KIT – NOT SHOWN (INCL. 3 mm AND 4 mm HEX KEYS) .....   | 1   |
| 9   | 079007001009 | DRIVER UNIT .....                        | 1   | 50  | 079001001051 | E-RING (ETW2) .....  | 3   | 84  | 079001001907 | TOOL BAG – NOT SHOWN .....  | 1   |
| 10  | 079001001010 | O-RING (23 x 2) (2023) .....             | 1   | 51  | 079001001052 | WORK CONTACT ELEMENT DAMPER .....                          | 1   | 85  | 079001001088 | GLASSES – NOT SHOWN .....   | 1   |
| 11  | 079001001011 | COLLAR .....                             | 1   | 52  | 079001001053 | FIXED PIN .....  | 1   | 86  | 079001001096 | WARNING LABEL – NOT SHOWN .....   | 1   |
| 12  | 079001001012 | CYLINDER .....                           | 1   | 53  | 079001001054 | POSITIONING SPRING .....                                   | 1   | 87  | 079001001095 | DATA LABEL – NOT SHOWN .....  | 1   |
| 13  | 079001001013 | O-RING (32 x 2) (2032) .....             | 1   | 54  | 079001001055 | DRIVER GUIDE COVER .....                                   | 1   | 88  | 079001001092 | LOGO LABEL – NOT SHOWN .....  | 2   |
| 14  | 079001001014 | CYLINDER RING .....                      | 1   | 55  | 079001001059 | PUSHER UNIT .....  | 1   | 89  | 079001001093 | MODEL LABEL (TOOL CASE) .....   | 1   |
| 15  | 079001001015 | CYLINDER SPACER .....                    | 1   | 56  | 079001001081 | CONTACT MECHANISM A .....                                  | 1   | 90  | 983000614    | OPERATOR'S MANUAL – NOT SHOWN .....   | 1   |
| 16  | 079001001016 | O-RING (47.5 x 2) (S48) .....            | 1   | 57  | 079001001090 | NO MAR PAD .....   | 2   | 91  | 983000623    | FASTENER GUIDE – NOT SHOWN .....  | 1   |
| 17  | 079001001017 | BUMPER .....                             | 1   | 58  | 079001001130 | * JOINT GUIDE .....  | 1   | 92  | 079001001102 | TRIGGER WRAP LABEL – NOT SHOWN .....  | 1   |
| 18  | 079001001129 | * DRIVER GUIDE .....                     | 1   | 59  | 079001001060 | SHAFT .....  | 2   | 93  | 079001001103 | HANG TAG – NOT SHOWN .....  | 1   |
| 19  | 079001001019 | CYLINDER CAP SEAL .....                  | 1   | 60  | 079001001061 | PUSHER SPRING .....  | 2   |     |              |   |     |
| 20  | 079001001020 | SEAL .....                               | 1   | 61  | 079001001062 | STOPPER .....  | 1   |     |              |   |     |
| 21  | 079001001021 | TRIGGER VALVE HEAD .....                 | 1   | 62  | 079001001063 | BOLT ASSY (M4 x 0.7-08 + Dp4) .....                        | 1   |     |              |   |     |
| 22  | 079001001022 | SPRING .....                             | 1   | 63  | 079001001064 | LOCK NUT (M4 x 0.7) .....                                  | 2   |     |              |   |     |
| 23  | 079001001023 | PLUNGER .....                            | 1   | 64  | 079001001065 | BOLT (HEX SOC. HD.) (M4 x 0.7-16) .....                    | 1   |     |              |   |     |
| 24  | 079001001024 | O-RING (2.5 x 1.5) (S3) .....            | 1   | 65  | 079001001066 | REAR PLATE .....   | 1   |     |              |   |     |
| 25  | 079001001025 | O-RING (2.5 x 1.5) (S3) .....            | 1   | 66  | 079001001079 | ADJUST ROD UNIT .....                                      | 1   |     |              |   |     |
| 26  | 079001001026 | O-RING (13 x 2) (2013) .....             | 1   | 67  | 079001001105 | MAGAZINE UNIT B W/INSERTS ..                               | 1   |     |              |   |     |
| 27  | 079001001027 | PLUNGER CAP .....                        | 1   | 68  | 079001001077 | WORK CONTACT ELEMENT SPRING .....                          | 1   |     |              |   |     |
| 28  | 079001001028 | TRIGGER PIVOT PIN .....                  | 1   | 69  | 079001001070 | LATCH .....  | 1   |     |              |   |     |
| 29  | 079001001029 | RETAINER .....                           | 1   | 70  | 079001001071 | LOCK SPRING .....  | 1   |     |              |   |     |
| 30  | 079001001030 | SPRING .....                             | 1   | 71  | 079001001072 | SPIRAL PINS (Dp3-24) .....                                 | 2   |     |              |   |     |
| 31  | 079001001031 | TRIGGER UNIT .....                       | 1   | 72  | 079001001073 | HOOD COVER .....   | 1   |     |              |   |     |
| 32  | 079007001701 | * TOOL BODY UNIT .....                   | 1   | 73  | 079001001074 | BOLT (HEX SOC. HD.) (M4 x 0.7-25) .....                    | 1   |     |              |   |     |
| 33  | 079001001033 | O-RING (7.5 x 1.5) (S8) .....            | 2   | 74  | 079007001115 | ADJUST KNOB .....  | 1   |     |              |   |     |
| 34  | 079001001034 | LINK ROD .....                           | 1   | 75  | 079001001076 | WORK CONTACT ELEMENT GUIDE .....                           | 1   |     |              |   |     |
| 35  | 079001001036 | FILTER .....                             | 1   |     |              |  |     |     |              |   |     |
| 36  | 079001001037 | GASKET .....                             | 1   |     |              |  |     |     |              |   |     |
| 37  | 079001001038 | SPRING RETAINER .....                    | 1   |     |              |  |     |     |              |   |     |
| 38  | 079001001039 | POSITIONING SHAFT .....                  | 1   |     |              |  |     |     |              |   |     |
| 39  | 079001001040 | POSITIONING SPRING .....                 | 1   |     |              |  |     |     |              |   |     |
| 40  | 079001001041 | SCREW (HEX SOC. HD.) (M4 x 0.7-06) ..... | 2   |     |              |  |     |     |              |   |     |
| 41  | 079001001042 | END CAP (NPT 1/4 in.) .....              | 1   |     |              |  |     |     |              |   |     |

\* Note: Changes start with serial number:  
AW082815576

3-6-13  
(REV:09)