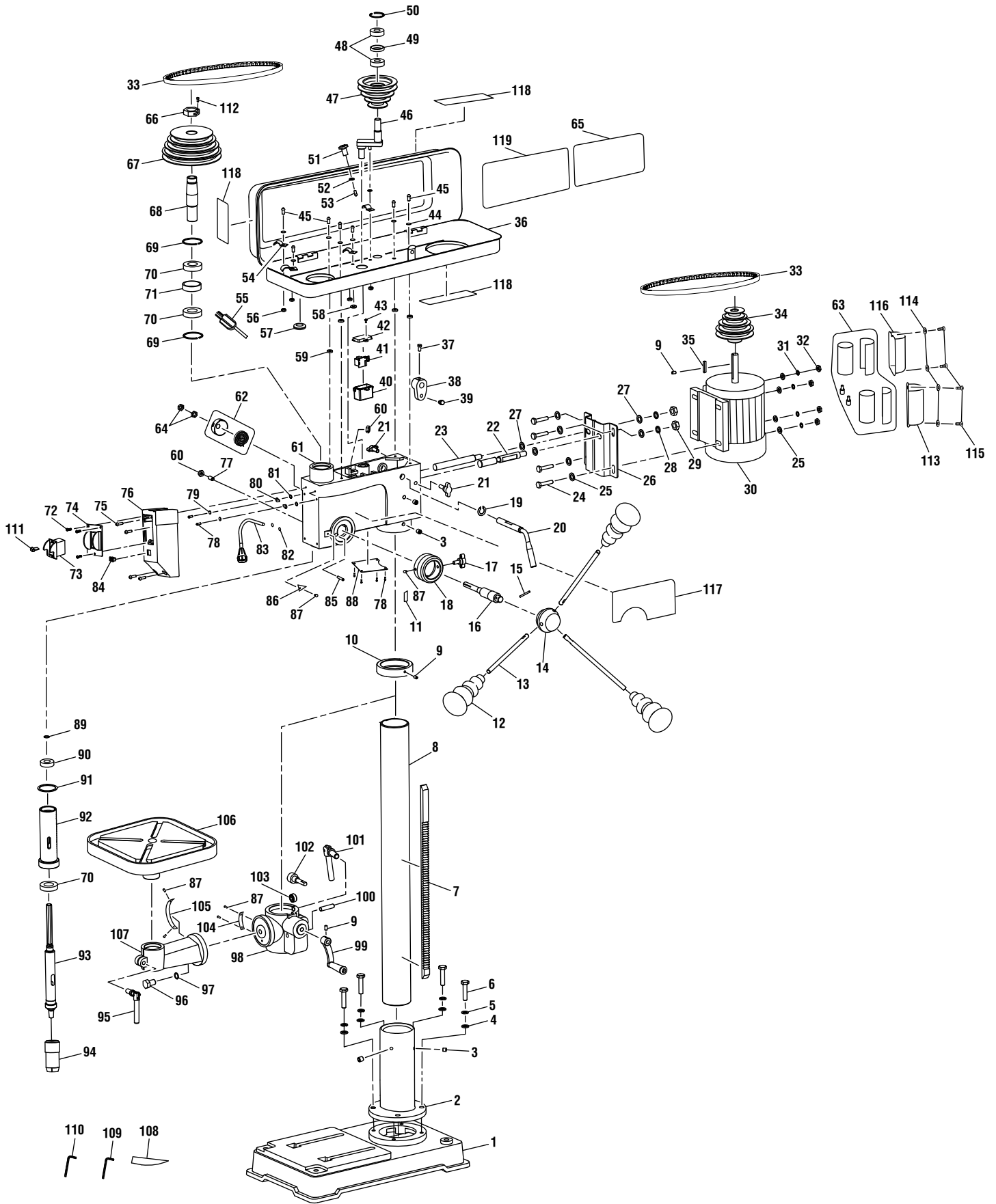


**RIDGID**  
**15 in. DRILL PRESS**  
**MODEL NO. R1500**  
**REPAIR SHEET**

**RIDGID**  
**381 mm (15 po) PERCEUSE À COLONNE**  
**NO. DE MODÈLE R1500**  
**FEUILLE DE RÉPARATION**

**RIDGID**  
**TALADRADORA DE COLUMNA DE 381 mm (15 pulg.)**  
**NÚM. DE MODELO R1500**  
**LISTAS DE PIEZAS DE REPUESTO**





# R1500

## PARTS LIST FOR FIGURE A

KEY	P/N	DESCRIPTION	QTY	KEY	P/N	DESCRIPTION	QTY
1	089140313001	Base.....	1	62	089140313703	Torsion Spring & Cover Assembly.....	1
2	089140313002	Support Column.....	1	63	089140313702	Capacitor Assembly.....	1
3	089140313003	Set Screw (M10 x 10 mm).....	4	64	089140313095	Hex Nut (M12).....	2
4	089140313004	Washer (M10).....	4	65	089140313908	Spindle Speed Label.....	1
5	089140313005	Spring Washer (M10).....	4	66	089140313097	Hex Lock Nut (M24 x 1.5-LH).....	1
6	089140313006	Bolt (M10 x 45 mm, Hex Hd.).....	4	67	089140313098	Spindle Pulley.....	1
7	089140313007	Rack.....	1	68	089140313099	Spline Housing.....	1
8	089140313008	Column Tube.....	1	69	089140313100	Retaining Ring.....	2
9	089140313009	Set Screw (M6 x 10 mm).....	3	70	089140313101	Bearing (6005).....	3
10	089140313010	Column Ring.....	1	71	089140313102	Bearing Washer.....	1
11	089140313011	Scale Label.....	1	72	089140313103	Screw (M3.5 x 10 mm, Pan Hd.).....	3
12	089140313012	Handle.....	3	73	089140313104	Main Switch.....	1
13	089140313013	Rod.....	3	74	089140313105	Switch Cover.....	1
14	089140313014	Handle Bracket.....	1	75	089140313106	Screw (M5 x 12 mm, Pan Hd.).....	4
15	089140313015	Elastic Pin (45 mm).....	1	76	089140313107	Switch Box.....	1
16	089140313016	Gear Shaft.....	1	77	089140313108	Screw (M10 x 28 mm).....	1
17	089140313017	Knob Bolt (M8 x 17 mm).....	1	78	089140313109	Screw (M4 x 6 mm, Pan Hd.).....	6
18	089140313018	Scale Base.....	1	79	089140313110	Spring Washer (M4).....	2
19	089140313019	Retaining Ring.....	1	80	089140313111	Connector.....	2
20	089140313020	Cam Shaft.....	1	81	089140313112	Star Washer.....	2
21	089140313069	Knob Bolt (M8 x 25 mm).....	1	82	089140313113	Ground Label.....	2
22	089140313021	Support Rod (B).....	1	83	089140313114	LED Light.....	1
23	089140313022	Support Rod (A).....	1	84	089140313115	LED Switch.....	1
24	089140313023	Bolt (M8 x 25 mm, Hex Hd.).....	4	85	089140313116	Pin (M6 x 20 mm).....	1
25	089140313024	Washer (M8).....	8	86	089140313117	Pointer.....	1
26	089140313025	Motor Base.....	1	87	089140313118	Rivet.....	6
27	089140313026	Washer (M12).....	4	88	089140313072	Cover Plate.....	1
28	089140313027	Spring Washer (M12).....	2	89	089140313119	Retaining Ring.....	1
29	089140313028	Hex Nut (M12).....	2	90	089140313120	Bearing (6003).....	1
30	089140313701	Motor Assembly (Inc. Key Nos. 63 and 113-116).....	1	91	089140313121	Absorber Ring.....	1
31	089140313059	Spring Washer (M8).....	4	92	089140313122	Spindle Sleeve.....	1
32	089140313060	Hex Nut (M8).....	4	93	089140313123	Spindle.....	1
33	089140313142	V-Belt (V13 x 700).....	2	94	089140313125	Chuck.....	1
34	089140313061	Motor Pulley.....	1	95	089140313126	Clamp Handle (A).....	1
35	089140313063	Key (C5 x 20 mm).....	1	96	089140313127	Bolt (M16 x 35 mm, Hex Hd.).....	1
36	089140313064	Pulley Cover.....	1	97	089140313128	Spring Washer (M16).....	1
37	089140313065	Bolt (M6 x 12 mm, Hex Hd.).....	1	98	089140313129	Arm Bracket.....	1
38	089140313066	Cam.....	1	99	089140313130	Crank.....	1
39	089140313067	Pin.....	1	100	089140313131	Gear Shaft.....	1
40	089140313068	Cover (Lower).....	1	101	089140313132	Clamp Handle (B).....	1
41	089140313070	Transformer.....	1	102	089140313133	Worm Shaft.....	1
42	089140313071	Cover (Upper).....	1	103	089140313134	Gear.....	1
43	089140313074	Screw (M4 x 10 mm).....	1	104	089140313135	Zero Scale Label.....	1
44	089140313075	Washer (M6).....	8	105	089140313136	Miter Label.....	1
45	089140313076	Screw (M6 x 12 mm, Pan Hd.).....	8	106	089140313137	Miter Table.....	1
46	089140313077	Shaft.....	1	107	089140313138	Arm.....	1
47	089140313078	Pulley (Middle).....	1	108	089140313139	Insert.....	1
48	089140313079	Bearing (6202).....	2	109	089140313140	Wrench (M3).....	1
49	089140313080	Washer.....	1	110	089140313141	Wrench (M5).....	1
50	089140313081	Retaining Ring.....	1	111	089140313073	Safety Switch Key.....	1
51	089140313082	Carry Handle.....	1	112	089140313124	Bolt (M4 x 8 mm).....	1
52	089140313083	Washer (M5).....	1	113	089140313055	Capacitor Cover (A).....	1
53	089140313084	Screw (M5 x 10 mm, Pan Hd.).....	1	114	089140313031	Washer (M4).....	4
54	089140313085	Clamp.....	4	115	089140313047	Screw (M4 x 8 mm, Pan Hd.).....	4
55	089140313086	Cord Assembly.....	1	116	089140313058	Capacitor Cover (B).....	1
56	089140313087	Hex Nut (M6).....	4	117	089140313903	Data and Warning Label.....	1
57	089140313088	Cord Protection Ring.....	2	118	089140313902	Logo Label.....	3
58	089140313089	Cord Protection Ring (C).....	1	119	089140313901	Speed Settings Label.....	1
59	089140313090	Absorber Ring.....	4				
60	089140313091	Hex Nut (M10).....	2				
61	089140313092	Main Assembly.....	1				

### NOT SHOWN

990000671  
11-12-14  
(Rev:02)

Operators Manual (089140313910)