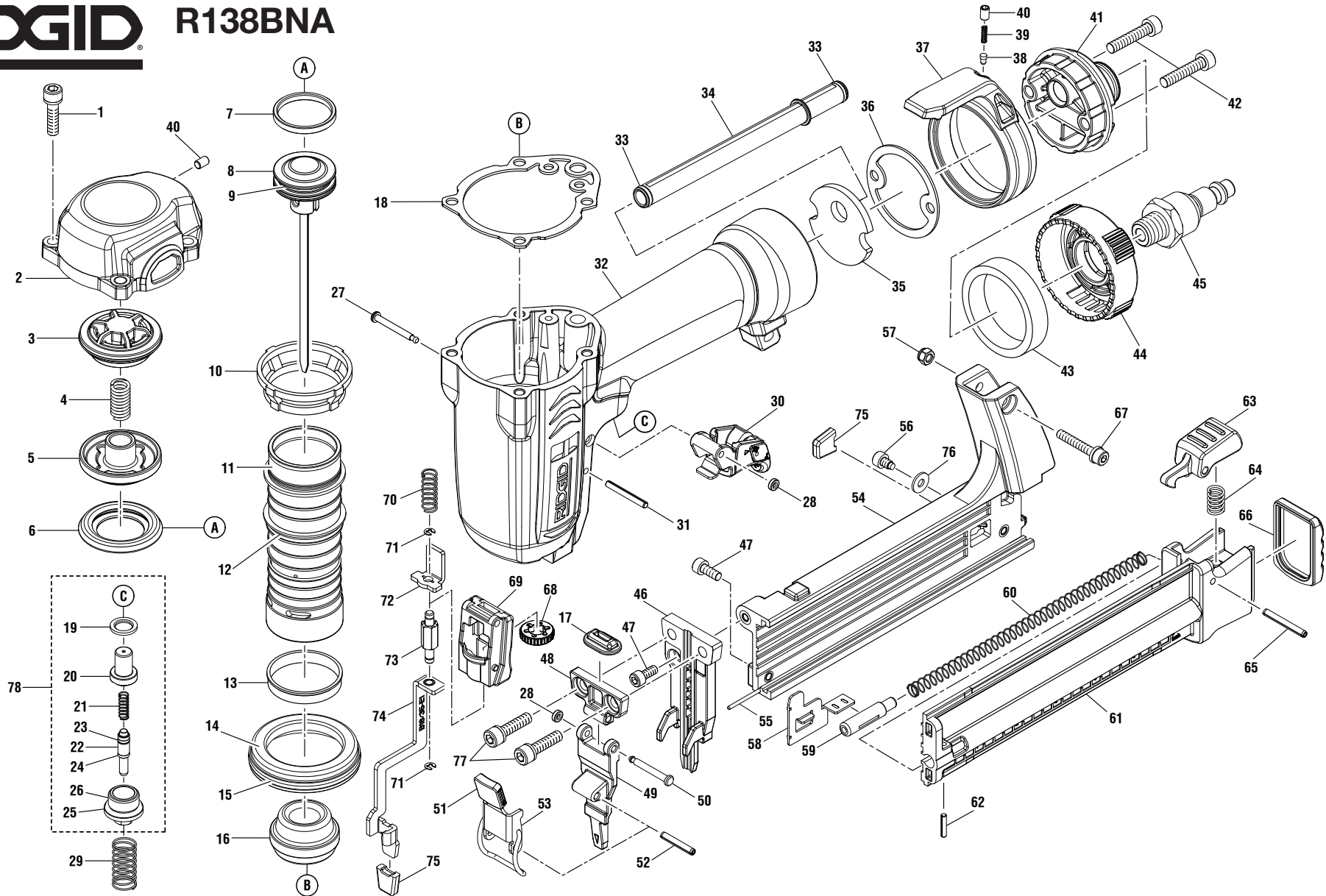


# RIDGID

## R138BNA



**⚠ DANGER:** Do not use oxygen, combustible gases, or bottled gases as a power source for this tool. The tool will explode and cause death or serious injury.

**⚠ DANGER :** Ne pas utiliser de l'oxygène ou des gaz combustibles ou en bouteille pour alimenter l'outil. L'outil exploserait, causant des blessures graves ou mortelles.

**⚠ PELIGRO:** No utilice oxígeno, gases combustibles ni gases embotellados como fuente de energía para esta herramienta. La herramienta explotará y causará la muerte o lesiones serias.

**⚠ WARNING:** Disconnect the tool from the air supply before performing maintenance. Failure to do so could result in serious personal injury.

**⚠ AVERTISSEMENT :** Débrancher l'outil de la source d'air avant tout entretien. Ne pas prendre cette précaution peut entraîner des blessures graves.

**⚠ ADVERTENCIA:** Desconecte la herramienta del suministro de aire antes de efectuar tareas de mantenimiento. La inobservancia de esta advertencia puede causar lesiones serias.

# RIDGID® R138BNA

KEY	P/N	DESCRIPTION	QTY	KEY	P/N	DESCRIPTION	QTY	KEY	P/N	DESCRIPTION	QTY
1	079001001001	BOLT ASSEMBLY (M5 x 0.8).....	4	38	079001001039	POSITIONING SHAFT.....	1	72	079001001078	WORKPIECE CONTACT .....	1
2	079001001106	CAP .....	1	39	079001001040	POSITIONING SPRING.....	1	73	079001001121	ADJUST ROD.....	1
3	079001001004	COLLAR.....	1	40	079001001041	SCREW (HEX SOC. HD.) (M4 x 0.7-06).....	2	74	079001001122	CONTACT MECHANISM A .....	1
4	079001001005	COMPRESSION SPRING .....	1	41	079001001042	END CAP (NPT 1/4 in.-18).....	1	75	079007001093	NO-MAR PAD .....	2
5	079001001006	HEAD VALVE PISTON .....	1	42	079001001043	BOLT (HEX SOC. HD.) (M5 x 0.8-25).....	2	76	079001001123	WASHER (D10 x D4 x T1).....	1
6	079001001007	SEAL .....	1	43	079001001044	MUFFLER.....	1	77	079003001054	BOLT ASSEMBLY (M5 x 0.8-20+5).....	2
7	079001001008	PISTON RING .....	1	44	079001001045	GUIDE PLATE .....	1	78	079001001085	TRIGGER ASSEMBLY KIT (INCL. KEY NO. 19-26 AND INSTRUCTION SHEET ) .....	1
8	079001001107	DRIVER UNIT .....	1	45	079001001046	AIR PLUG (NPT 1/4 in.-18) .....	1	<b>NOT SHOWN</b>			
9	079001001010	O-RING (23 x 2) .....	1	46	079001001111	DRIVER GUIDE .....	1	79	079001001701	OVERHAUL KIT (INC. KEY NO. 3, 6, 7, 9, 12, 13, 15, 16, 18, 19, 20, 21, 22, 23, 24, 25, 26, 28, PLUS LUBRICANT AND INSTRUCTION SHEET) .....	1
10	079001001011	COLLAR.....	1	47	079027004046	BOLT (HEX SOC. HD.) (M4 x 0.7-10) .....	2	80	079001001702	DRIVER MAINTENANCE KIT (INCL. KEY NO. 7, 8, 9, 16, 18, PLUS LUBRICANT AND INSTRUCTION SHEET) .....	1
11	079001001108	CYLINDER .....	1	48	079007001050	DRIVER GUIDE COVER B.....	1	81	079001001703	DRIVER ASSEMBLY (INCL. KEY NO. 7, 8, 9, 18 PLUS LUBRICANT AND INSTRUCTION SHEET) .....	1
12	079001001013	O-RING (32 x 2) .....	1	49	079001001112	DRIVER GUIDE COVER A.....	1	82	079001001099	WRENCH KIT (INCL. 3 mm AND 4 mm HEX KEYS) .....	1
13	079001001014	CYLINDER RING.....	1	50	079007001052	FIXED PIN .....	1	83	079001001904	CASE W/LABEL.....	1
14	079001001015	CYLINDER SPACER .....	1	51	079003001062	PUSHER CUSHION .....	1	84	079001001905	LABEL (CASE) .....	1
15	079001001016	O-RING (47.5 x 2) .....	1	52	079003001064	SPIRAL PIN 3-20 .....	1	85	079001001088	EYE PROTECTION .....	1
16	079001001017	BUMPER.....	1	53	079001001113	LOCK HANDLE UNIT.....	1	86	079001001903	WARNING AND DATA LABEL.....	1
17	079001001091	JOINT GUIDE.....	1	54	079001001902	MAGAZINE A (INCL. KEY NO. 95).....	1	87	079001001092	LOGO LABEL .....	2
18	079001001019	CYLINDER CAP SEAL .....	1	55	079007001059	FLAT BAR.....	1	88	983000623	FASTENER GUIDE .....	1
19	079001001020	SEAL .....	1	56	079007001100	SCREW .....	1	89	079001001102	TRIGGER WRAP LABEL .....	1
20	079001001021	TRIGGER VALVE HEAD .....	1	57	079001001064 *	LOCK NUT (M4 x 0.7) .....	1	90	079001001901	HANG TAG .....	1
21	079001001022	SPRING.....	1	58	079001001115	PUSHER.....	1	91	987000322	OPERATOR'S MANUAL .....	1
22	079001001023	PLUNGER .....	1	59	079001001116	SHAFT.....	1				
23	079001001024	O-RING (2.5 x 1.5) .....	1	60	079007001068	PUSHER SPRING .....	1				
24	079001001025	O-RING (2.5 x 1.5) .....	1	61	079001001117	MAGAZINE B .....	1				
25	079001001026	O-RING (13 x 2) .....	1	62	079001001118	SPRING PIN (2.5-12).....	1				
26	079001001027	PLUNGER CAP.....	1	63	079001001070	LATCH.....	1				
27	079001001028	TRIGGER PIVOT PIN .....	1	64	079007001072	LOCK SPRING .....	1				
28	079001001029	RETAINER .....	2	65	079001001119	SPIRAL PIN (3-26).....	1				
29	079001001030	SPRING.....	1	66	079001001120	HOOD COVER .....	1				
30	079001001031	TRIGGER UNIT .....	1	67	079027004038	BOLT W/ WASHER (M4 x 0.7-25).....	1				
31	079002001041	SPRING PIN (3-25).....	1	68	079001001075	ADJUST SHAFT .....	1				
32	079001001110	TOOL BODY UNIT .....	1	69	079001001076	WORKPIECE CONTACT GUIDE .....	1				
33	079001001033	O-RING (7.5 x 1.5) .....	2	70	079001001077	WORKPIECE CONTACT SPRING.....	1				
34	079001001034	LINK ROD .....	1	71	079001001051	E-RING.....	2				
35	079001001036	FILTER.....	1								
36	079001001037	GASKET .....	1								
37	079001001038	SPRING RETAINER.....	1								

\* Standard Hardware Item – May Be Purchased Locally