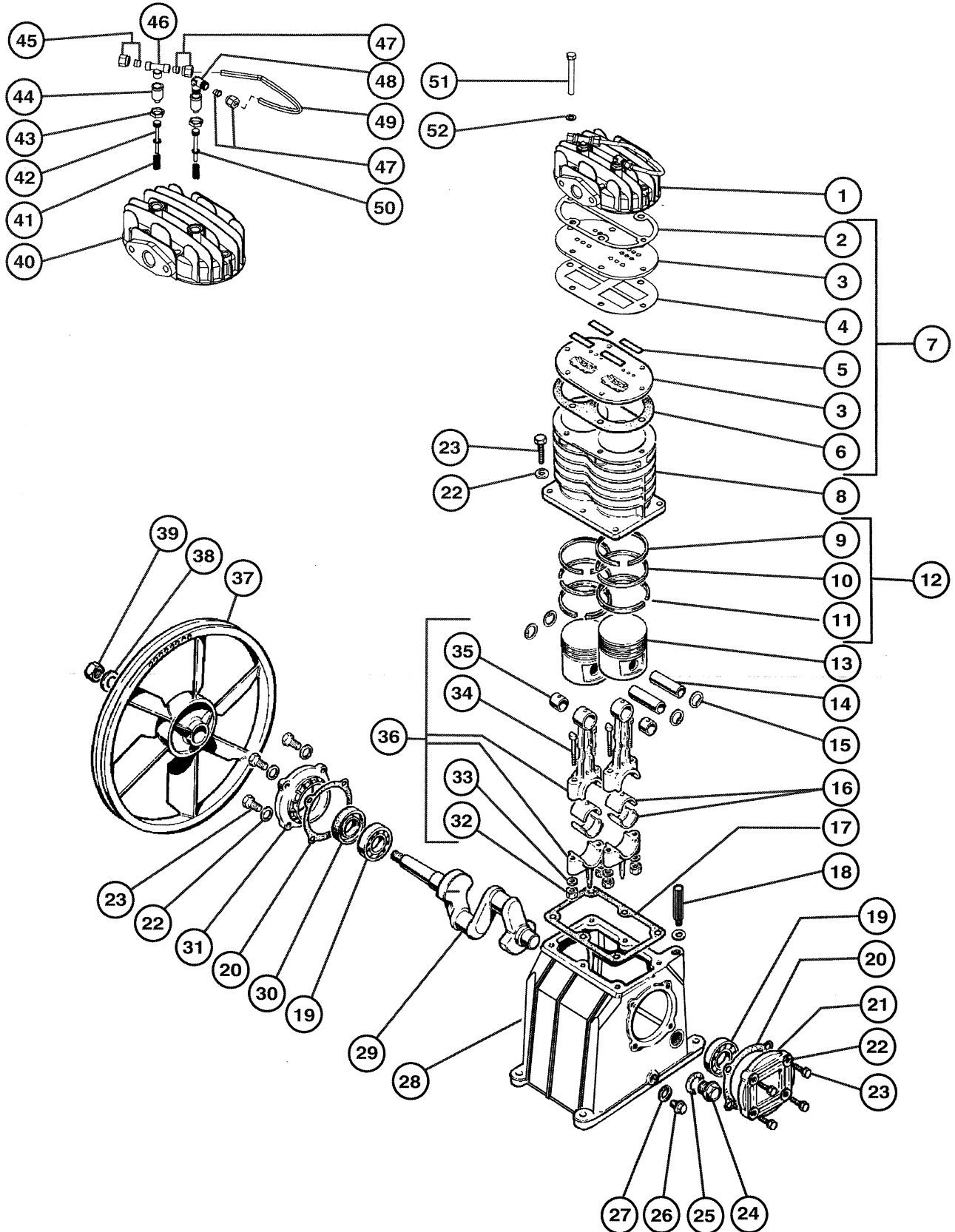


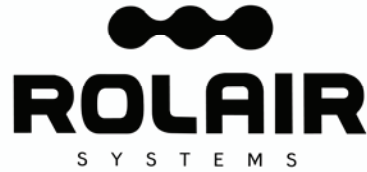


ROLAIR

S Y S T E M S

SCHEMATIC FOR PMP12KEMGCHHU





PARTS LIST FOR PMP12KEMGCHHU

Schem. #	Description	Part #	Qty.	Schem. #	Description	Part #	Qty.
1	Complete Head w/Unloaders	31449950CH	1	29	Crankshaft	30201000CH	1
2	Gasket	30501090CH	1	30	Oil Seal	30300040CH	1
3	Valve Plate	32701030CH	1	31	Bearing Carrier	30400890CH	1
4	Gasket	30501100CH	4	32	Nut	37400220CH	4
5	Valve	32700350CH	4	33	Washer	37500310CH	4
6	Gasket	30501110CH	4	34	Bolt	37300250CH	4
7	Valve Plate Assembly	1700VK17	2	35	Bushing*	31100240CH	2
8	Cylinder	31601010CH		36	Connecting Rod w/Upper Bushing	31100750CH	2
9	Ring	31200300CH	2		Connecting Rod Assembly	31100750CH1	2
10	Ring	31200290CH	2				
11	Ring	31200280CH	1	37	Flywheel	31000080CH	1
12	Ring Set	K17RINGS	1	38	Washer	37500730CH	1
13	Piston	31200270CH	1	39	Nut	37400720CH	1
14	Piston Pin	31200260CH	1	40	Head	31301040CH	1
15	Snap Ring	37600230CH	2	41	Spring	37602850CH	2
16	Bearing Shell	31100210CH	2	42	Unloading Piston	31403310CH	2
17	Gasket	30501120CH	2	43	Nut	37402500CH	2
18	3/8" Breather/Oil Fill Plug	36507050CH	2	44	Reducer Sleeve	31401260CH	2
19	Bearing	30300030CH	1	45	Nut & Ring	31402950CH	1
20	Gasket	30500150CH	1	46	T-Connector w/Fittings	16905110CH	1
21	Bearing Carrier	30400830CH	2	47	Nut & Ring	16905120CH	2
22	Washer	37508130CH	1	48	L-Connector w/Fittings	16905130CH	1
23	Bolt	37301140CH	1	49	Tube	34302820CH	1
24	Sight Gauge	36500140CH	2	50	O-Ring	30502870CH	2
25	Gasket	30500130CH	6	51	Bolt	37300990CH	6
26	Drain Bolt	36500110CH	6	52	Washer	37500400CH	6
27	Gasket	30500160CH	1		Gasket Set	K17GASKETS	1
28	Crankcase	33101000CH	1		Optional Stud Bolt	32500020CH	1

*Bushing is not machined to fit piston pin if ordered separate from connecting rod.

