

Model 100 12" Planer

ALL MACHINES PERFORMANCE-TESTED BEFORE SHIPMENT

Smaller shops everywhere applaud the features of this mighty mite of the Powermatic planer line. Though small in size, cabinet, school, pattern and light-duty millwork shops have found the Model 100 completely adequate for the most precise requirements.

Incorporating many famous features of the larger Powermatic planers, this low-cost model is proving its dependably superior performance year-in and year-out in every type of small shop.

smoother surfacing saves finishing time

The unique chipbreaker construction and perfectly synchronized operation of cutterhead and feed rollers assure virtually gap-free surfacing for a wide variety of stocks at maximum speed.

The extra size 12" x 24" one-piece bed is the longest available on any 12" planer and assures greater infeed and outfeed support of longer stock for more accurate surfacing.

See how fast the Model 100 will start paying for itself in your shop with faster precision production.

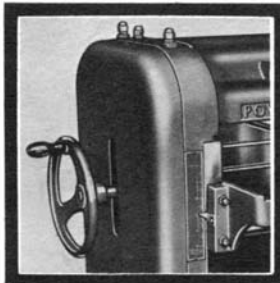


T.E.F.C. Motor
Standard

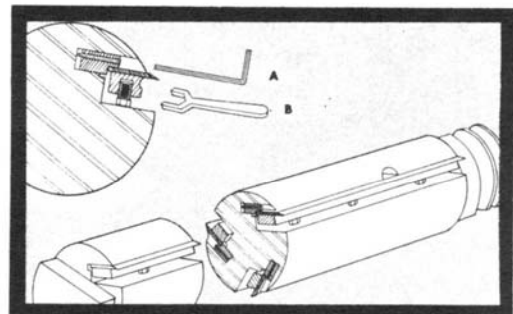
Extra Safety in Operation—the chipbreaker is mounted extremely near the cutterhead and extends completely over it to permit deep-cut surfacing without difficulty. All moving parts completely guarded.



Convenient Bed-Adjustment Hand-Wheel activates bed acme-thread screws which operate in ball thrust bearings. Easy-to-read thickness gauge. One-piece cast iron frame keeps perfect alignment.



Built For Heavy Work-Loads—Top rollers and pressure bar adjustments are fully visible and can be adjusted while machine is in operation. Positive clutch starts or stops feed rolls instantly.



Speeds Accurate Knife Setting—a standard feature!

Set and secure all cutterhead knives in as little as half the time. Adjust knife support jack-screws (A) with Allen wrench and pressure-lock knife safety shim (B) with end wrench. Cutter-head mounted in over-size sealed ball bearings. Finest carbon tool steel.

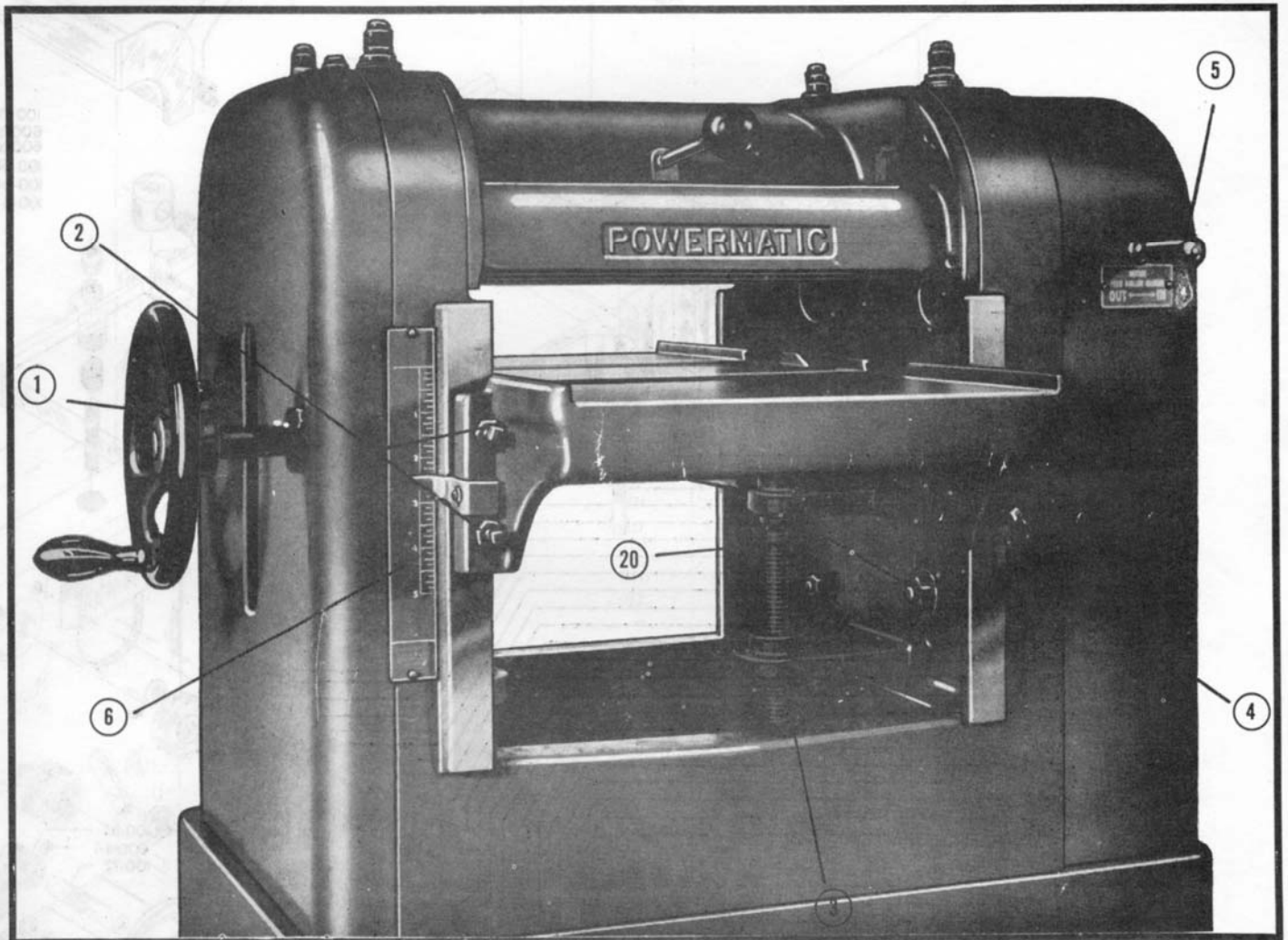
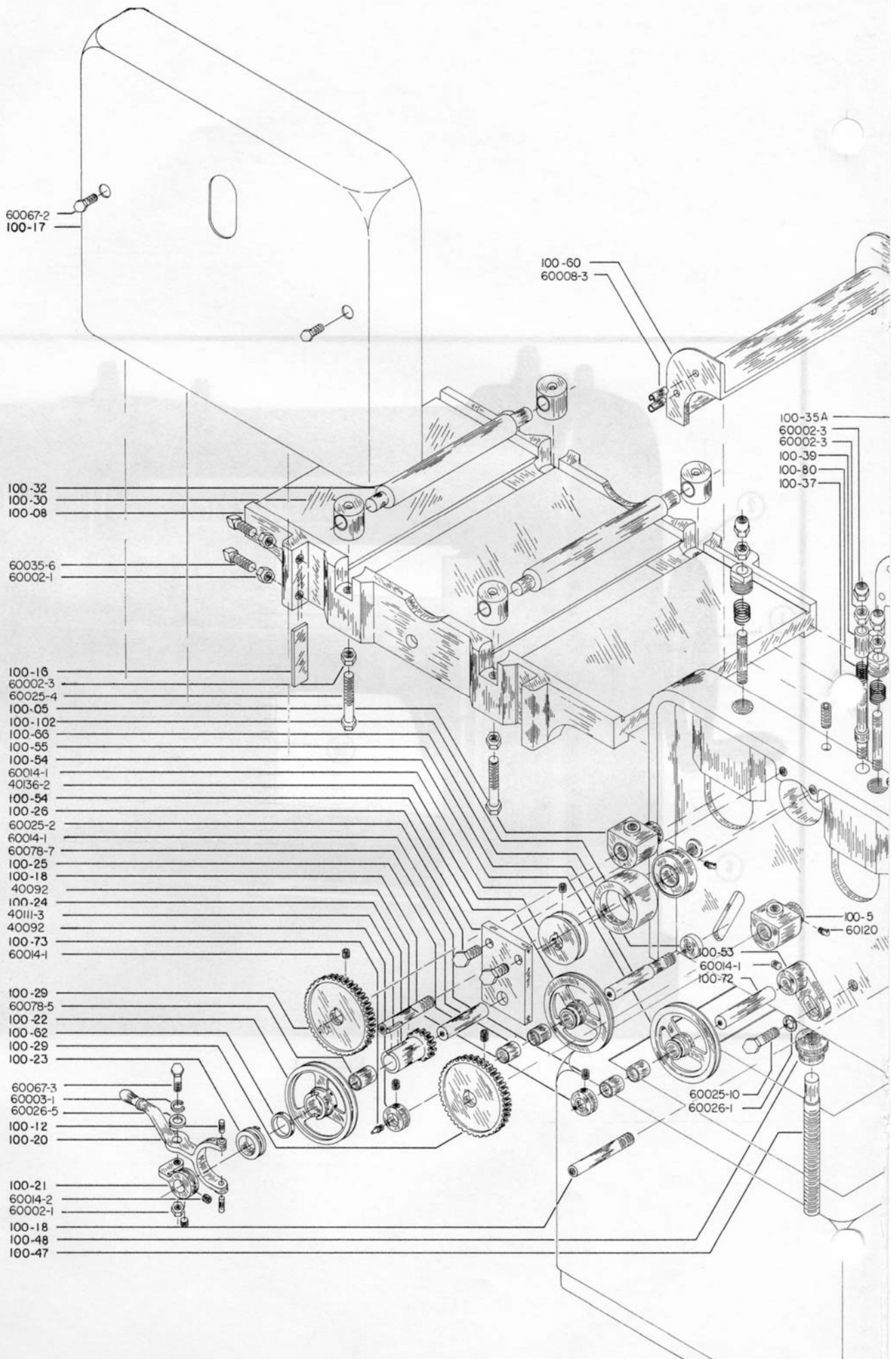


Figure 1



60067-2
100-17

100-60
60008-3

100-35A
60002-3
60002-3
100-39
100-80
100-37

100-32
100-30
100-08

60035-6
60002-1

100-16
60002-3
60025-4
100-05
100-102
100-66
100-55
100-54
60014-1
40136-2
100-54
100-26
60025-2
60014-1
60078-7
100-25
100-18
40092
100-24
40111-3
40092
100-73
60014-1

100-29
60078-5
100-22
100-62
100-29
100-23

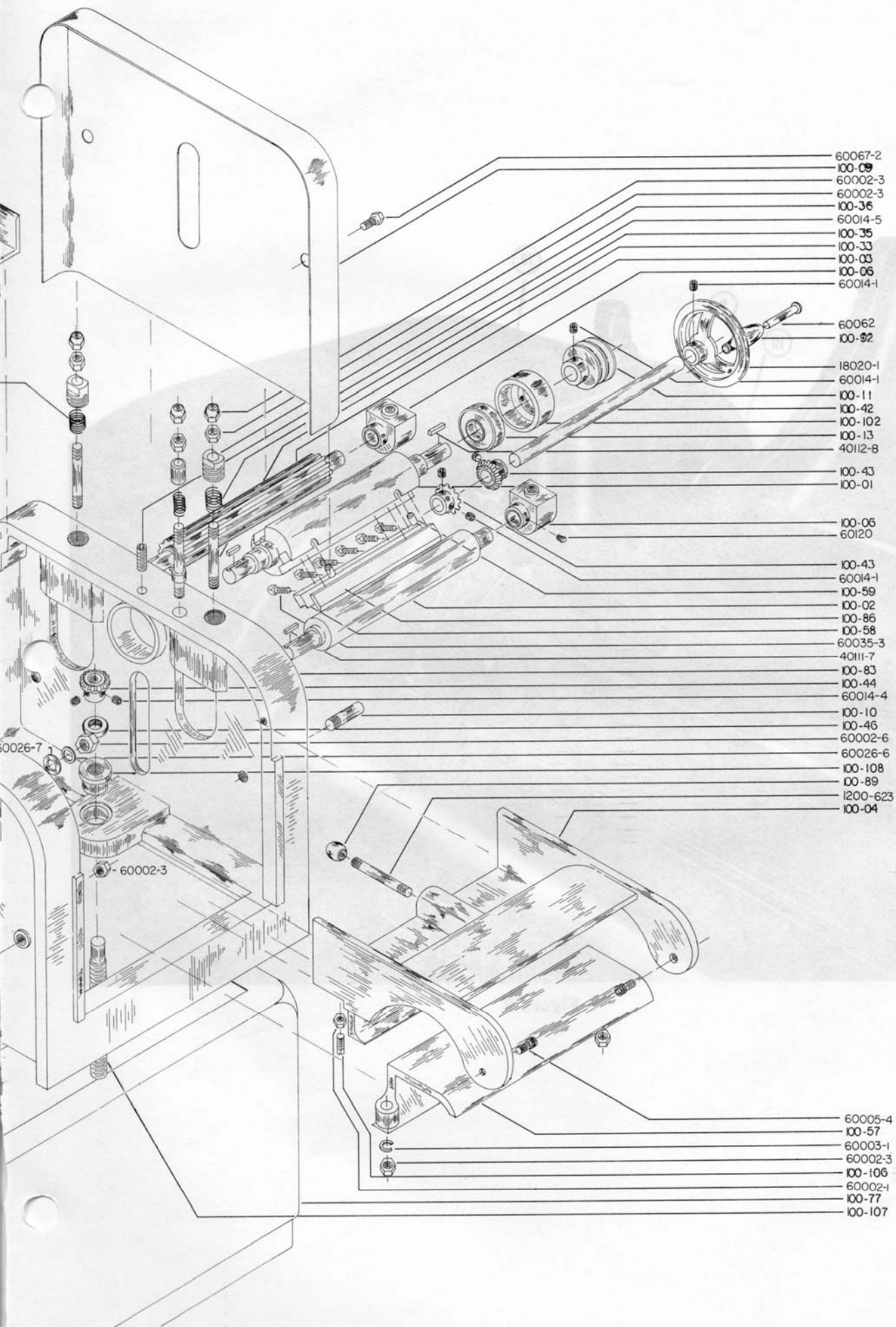
60067-3
60003-1
60026-5
100-12
100-20

100-21
60014-2
60002-1
100-18
100-48
100-47

100-5
60120

100-53
60014-1
100-72

60025-10
60026-1



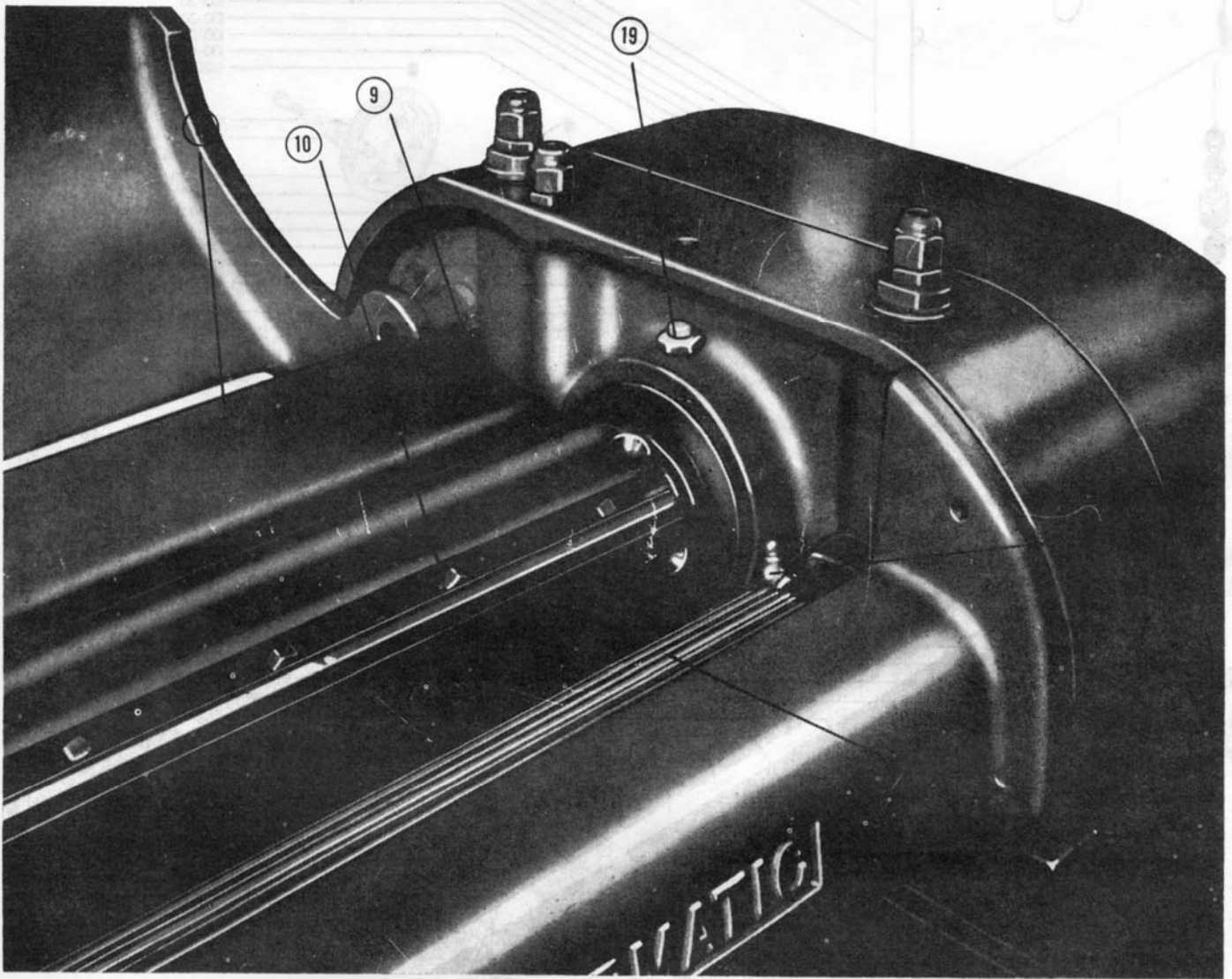


Figure 2

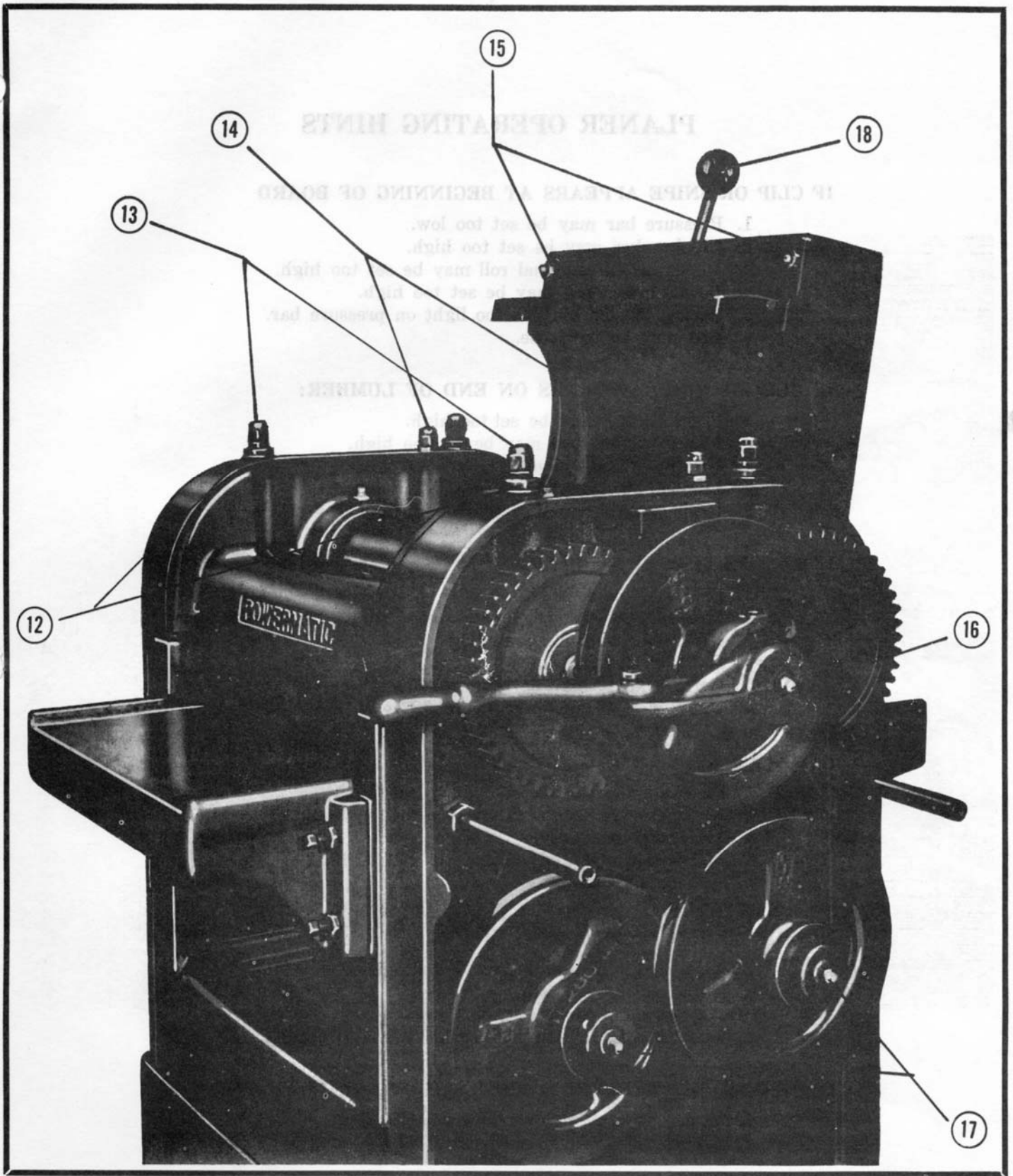


Figure 3

PARTS LIST FOR MODEL 100-12" PLANER

STATE PLANER SERIAL NUMBERS WHEN ORDERING PARTS

Part No.	Description	No. Required	Part No.	Description	No. Required
100-1	Cutterhead	1	100-72	Shaft Compound Sheave	1
100-2	Roller, Outfeed	1	100-73	Grease, Alemite, 1/8 Pipe	1
100-3	Roller, Infeed	1	100-77	Stand Assembly	1
100-4	Chipbreaker	1	100-83	Main Frame	1
100-5	Bearing Housing, R	2	100-86	Cutterhead Knife	3
100-6	Bearing Housing, L	2	100-89	Knob	1
100-8	Table	1	100-92	Handwheel	1
100-9	Belt Guard	1	100-102	Bearing Housing	2
100-10	Stud, Cutterhead Guard	2	100-106	Slotted Head SS, 5/16 - 18 x 1	2
100-11	Pulley, 2 AK 27	1	100-107	Screw	1
100-12	Pin	2	100-108	Nut	1
100-13	Bearing, Fafnir, 206KLL	2	18020-1	Handwheel	1
100-16	Shim, Table Adj	2	40092	Collar	1
100-17	Feed Drive Guard Assy	1	40111-3	Key, 3/16 x 3/16 x 1	1
100-18	Stud Feed Drive Guard Mtg	2	40111-7	Key, 3/16 x 3/16 x 1 1/2	2
100-20	Lever, Clutch	1	40112-8	Key, 1/4 x 1/4 x 1 5/8	1
100-21	Brkt, Clutch Lever Mtg	1	40136-2	Pulley, AS-26	1
100-22	Sheave, Clutch	1	60002-1	Nut, Hex, 5/16 - 18	6
100-23	Collar & Clutch	1	60002-3	Nut, Hex, 3/8 - 16	10
100-24	Pinion, Clutch Lever	1	60002-6	Nut, Hex, 1/2 - 13	1
100-25	Shaft, Clutch Pinion	1	60003-1	Lock Washer, 5/16	2
100-26	Brkt, Clutch Mtg	1	60005-4	Socket Cap Screw, 5/16 - 18 x 1/2	2
100-29	Gear, Feed Roller Drive	2	60008-3	Split Pin, 1/4 x 1 1/4	4
100-30	Bearing Housing	1	60014-1	Socket Set Screw, 5/16 - 18 x 3/8	14
100-32	Table Roller	2	60014-2	Socket Set Screw, 5/16 - 18 x 1/2	2
100-33	Stud, Feed Roller Bearing	1	60014-5	Socket Set Screw, 5/16 - 18 x 1	4
100-35	Spring, Outfeed Press Stud, 12102	2	60025-2	Hex Head Cap Screw, 3/8 - 16 x 1	2
100-35A	Spring, Infeed Press Stud, 12101	2	60025-4	Hex Head Cap Screw, 3/8 - 16 x 1 3/4	4
100-36	Nut, Feed Roll Spring	4	60025-10	Hex Head Cap Screw, 3/8 - 16 x 1 1/4	1
100-37	Stud, Pressure Bar	1	60026-1	Washer Flat, 3/8	5
100-39	Bushing Pressure Bar	1	60026-5	Washer Flat, 5/16	1
100-42	Shaft	1	60026-6	Washer Flat, 1/2	1
100-43	Gear	2	60026-7	Washer Flat, 5/8	1
100-44	Gear	2	60035-3	Square Head Set Screw, 5/16 - 18 x 1/2	18
100-46	Bearing, Thrust, Nice 605	2	60035-6	Square Head, Set Screw, 5/16 - 18 x 1 1/2	4
100-47	Screw (LH)	1	60062	Rivet, 1/4 x 3	1
100-48	Nut	1	60067-2	Hex Head Cap Screw, 5/16 - 18 x 1/2	4
100-50	*Belt, Clutch, Browning 33A	1	60067-3	Hex Head Cap Screw, 5/16 - 18 x 1 1/4	2
100-51	*Belt, Cutterhead, Browning 36A	1	60078-5	Bushing, Oilite	1
100-52	*Belt, Compound Drive, Brwng 28A	1	60078-7	Bushing, Oilite	4
100-53	Hanger, Compound Sheave	1	60120	Grease, Alemite	4
100-54	Sheave, Compound	2	60025-4	Hex Head Cap Screw, 3/8 - 16 x 1 3/4	4
100-55	Shaft, Threaded	1	100-80	Spring	2
100-57	Pressure Bar	1	1200-623	Handle	1
100-58	Shim, Cutterhead Knife	3			
100-59	Jackscrew Peanut	1			
100-60	Brace Front Panel	1			
100-62	Spacer, Clutch	1			
100-66	Spacer, Comp Feed Roller	1			

*Not Pictured

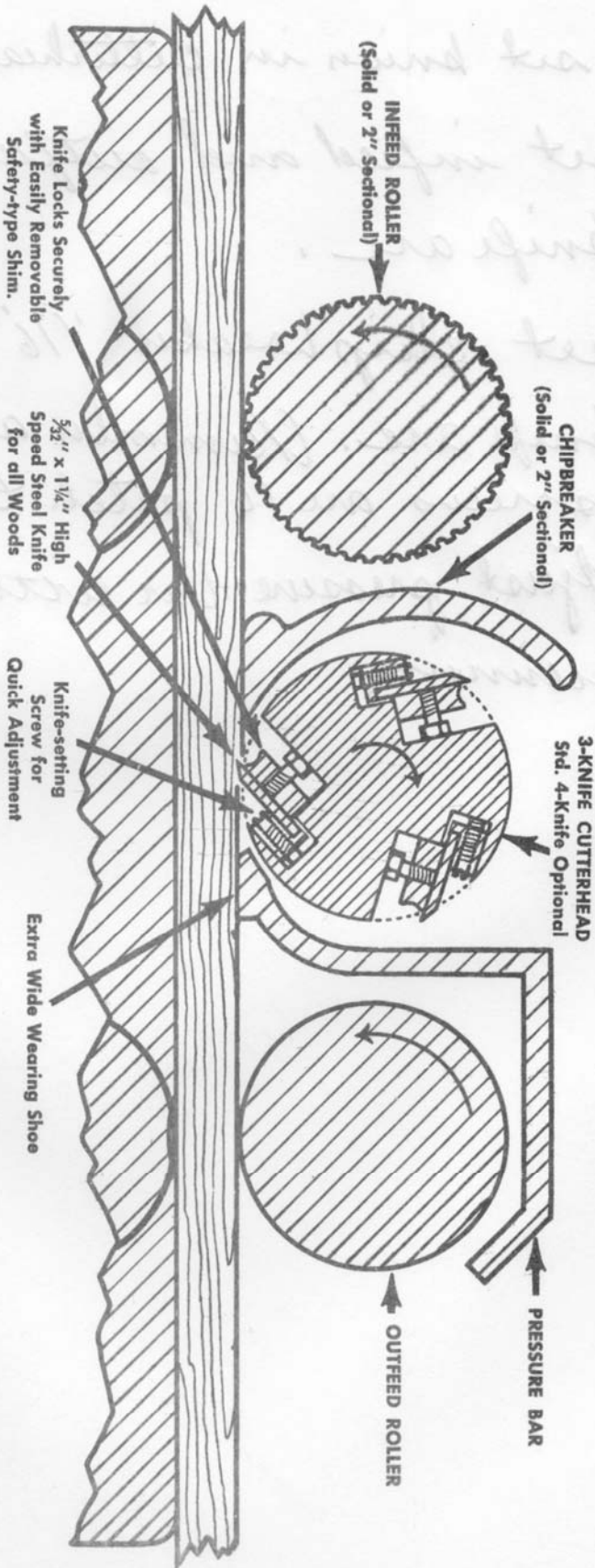
PARTS LIST FOR MODEL 100-12" PLANER

PART NO.	DESCRIPTION	NUMBER	PRICE
100-1	Cutterhead	1	65.00
100-2	Roller, outfeed	1	10.50
100-3	Roller, infeed, corrugated	1	12.50
100-4	Chipbreaker	1	16.00
100-5	Bearing, feed roller, R. H.	2	6.00 Each
100-6	Bearing, feed roller, L. H.	2	6.00 Each
100-7	Grease fitting, feed roller bearing	4	.30 Each
100-8	Table, Planer	1	45.00
100-9	Guard, cutterhead belt	1	8.50
100-10	Stud, cutterhead belt guard	1	.75
100-11	Pulley, cutterhead, 2AK27, 1" bore	1	3.50
100-12	Housing, cutterhead bearing	2	6.00 Each
100-13	Bearing, cutterhead, Fafnir 206KLL	2	4.50 Each
100-14	Cap screw, cutterhead belt guard	2	.25 Each
100-15	Screw, table shim adjusting	4	.25 Each
100-16	Shim, table adjusting	2	1.00 Each
100-17	Guard, feed drive	1	6.50
100-18	Stud, feed drive guard	2	1.25
100-19	Cap screw, feed drive guard	2	.25 Each
100-20	Lever clutch	1	3.00
100-21	Bracket, clutch lever	1	2.50
100-22	Sheave, clutch	1	8.50
100-23	Collar, clutch	1	2.50
100-24	Pinon, clutch lever	1	6.00
100-25	Shaft, clutch pinion	1	2.25
100-26	Bracket, clutch mounting	1	2.00
100-27	Pulley, cutterhead feed drive, AK22	1	1.50
100-28	Bolt, clutch lever	1	.10
100-29	Gear, feed roller drive	2	8.00 Each
100-30	Bearing housing, table roller	4	3.00 Each
100-31	Adjusting screw, table roller bearing housing	4	.10 Each
100-32	Roller table	2	8.50 Each
100-33	Stud, feed roller bearing	4	.75 Each
100-34	Lock nut, feed roller bearing stud	4	.25 Each
100-35	Spring, feed roller	4	.50 Each
100-36	Cap, feed roller pressure spring	4	2.00 Each
100-37	Stud, pressure bar	2	1.50 Each
100-38	Lock Nut, pressure bar	2	.25 Each
100-39	Bushing, pressure bar	1	.25
100-40	Nut, pressure bar stud	2	.25 Each
100-41	Handwheel, table raising	1	2.50
100-42	Shaft, table raising	1	4.00
100-43	Mitre gear, table raising	2	4.50 Each
100-44	Bevel gear, table raising	2	4.50 Each
100-45	Lock, table	2	.75 Each
100-46	Bearing, table raising screw thrust	2	1.25 Each
100-47	Screw, table raising, L. H.	1	6.00

PART NO.	DESCRIPTION	NUMBER	PRICE
100-47A	Screw, table raising	1	6.00
100-48	Nut, table raising Screw, L. H.	1	3.00
100-48A	Nut, table raising screw, R. H.	1	3.00
100-49	Screw, table raising screw nut locking	2	.10 Each
100-50	Belt, clutch sheave drive	1	1.35
100-51	Belt, cutterhead feed drive	1	1.40
100-52	Belt, compound drive	1	1.30
100-53	Hanger & Shaft, compound sheave	1	2.00
100-54	Sheave, compound	2	10.50 Each
100-55	Shaft, compound sheave	1	1.00
100-56	Collar, compound shaft	2	.50 Each
100-57	Pressure bar	1	16.00
100-58	Shim and Stud, cutterhead knife	3	3.00 Each
100-59	Jack Screws, cutterhead	6	.25 Each
100-60	Brace, front panel	1	10.00
100-61	Washer, compound feed roller drive Pulley 3/8"	1	.50
100-62	Spacer, clutch	1	1.00
100-63	Set screw, shift lever bracket	1	.10
100-64	Key, cutterhead drive pulley	1	.25
100-65	Washer, compound feed roller drive Pulley 1/2"	1	.50
100-66	Spacer, compound feed roller drive Pulley 1/2"	1	.50
100-67	Bolt, compound sheave mounting	1	.25
100-68	Nut, feed roller drive pulley mounting 3/8"	1	.25
100-69	Bearing housing, outfeed roller, R. H.	1	6.00
100-70	Bearing housing, outfeed roller, L. H.	1	6.00
100-71	Screw, clutch bracket mounting	1	.25
100-72	Stud, feed roller drive pulley mounting	1	1.00
100-73	Stud, feed roller adjusting	1	.75
100-74	Screw, frame mounting	1	.25
100-75	Screw, holddown adjusting	1	1.50
100-76	Shim, table	1	1.00
100-77	Base	1	25.00
100-78	Pulley, compound drive NO. 1	1	10.50
100-79	Motor base	1	6.00
100-80	Spring, holddown pressure	1	.25
100-81	Belt guard, feed roller drive	1	6.50
100-82	Nut, holddown adjusting	1	.25
100-83	Main frame	1	125.00
100-84	Nut, spring retainer	1	2.00
100-85	Nut, feed roller adjusting	1	.10
100-86	Knife, cutterhead	1	4.00
100-87	Handle, chipbreaker raising	1	1.50
100-88	Clutch key	1	.25
100-89	Collar, compound sheave mounting	1	.50
100-90	Pulley, compound drive No. 2	1	10.50

<u>PART NO.</u>	<u>DESCRIPTION</u>	<u>NUMBER</u>	<u>PRICE</u>
100-91	Rod, handwheel handle	1	.50
100-92	Handle, handwheel No. 2	1	.75
100-93	Set screw, head pulley	1	.10
100-94	Nut, head bearing housing	1	.10
100-95	Set screw, head bearing housing	1	.10
100-96	Set screw, handwheel	1	.10
100-97	Nut, stud guard	4	.25 Each
100-98	Set screw, feed roller gear	2	.10 Each
100-99	Nut, adjusting screw bearing housing	4	.10 Each
100-100	Nut, table shim locking screws	4	.10 Each
100-101	Bearing, Head	1	4.50
100-102	Head, bearing housing	1	6.00

CUTTING-ROLLER ASSEMBLY (SIDE VIEW)



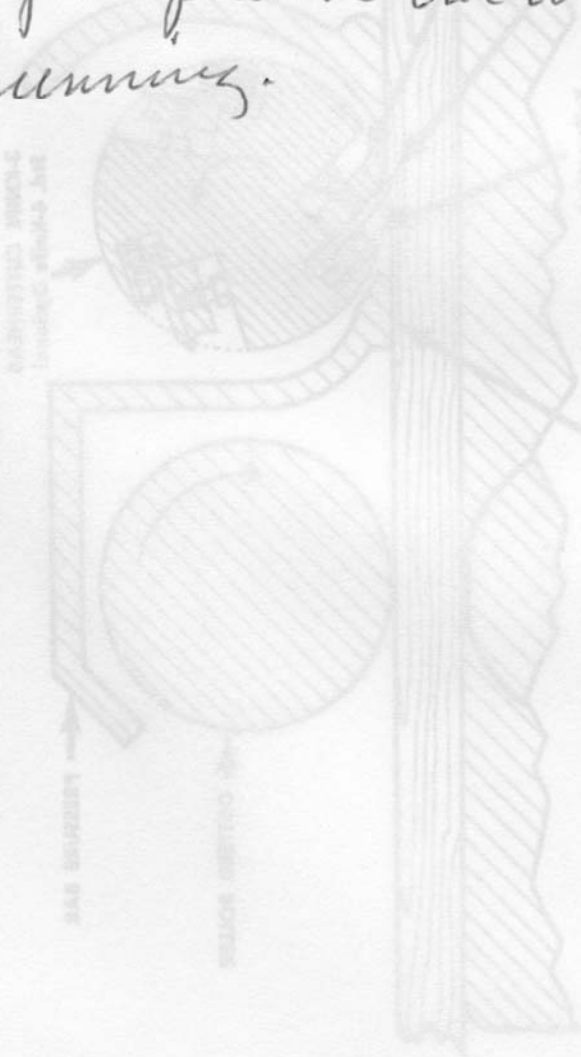
POWERMATIC COMPANY
A Division of Houdaille Industries, Inc.
MANNINGVILLE, TENNESSEE 37110

MODEL 221 20" SINGLE SURFACER

(over)

1. check bed to see if it is tight
2. check bed for parallel to cutterhead
3. set knives in cutterhead
4. set infeed and outfeed $\frac{1}{16}$ " below knife are.
5. set chipbreaker $\frac{1}{16}$ " below knife are. (Remember all adjusting screws are 16 pitch thread)
6. adjust pressure bar with machine running.

CUTTING-TOOLER ASSEMBLY (SIDE VIEW)



MODEL 351 50, SINGLE SURFACER