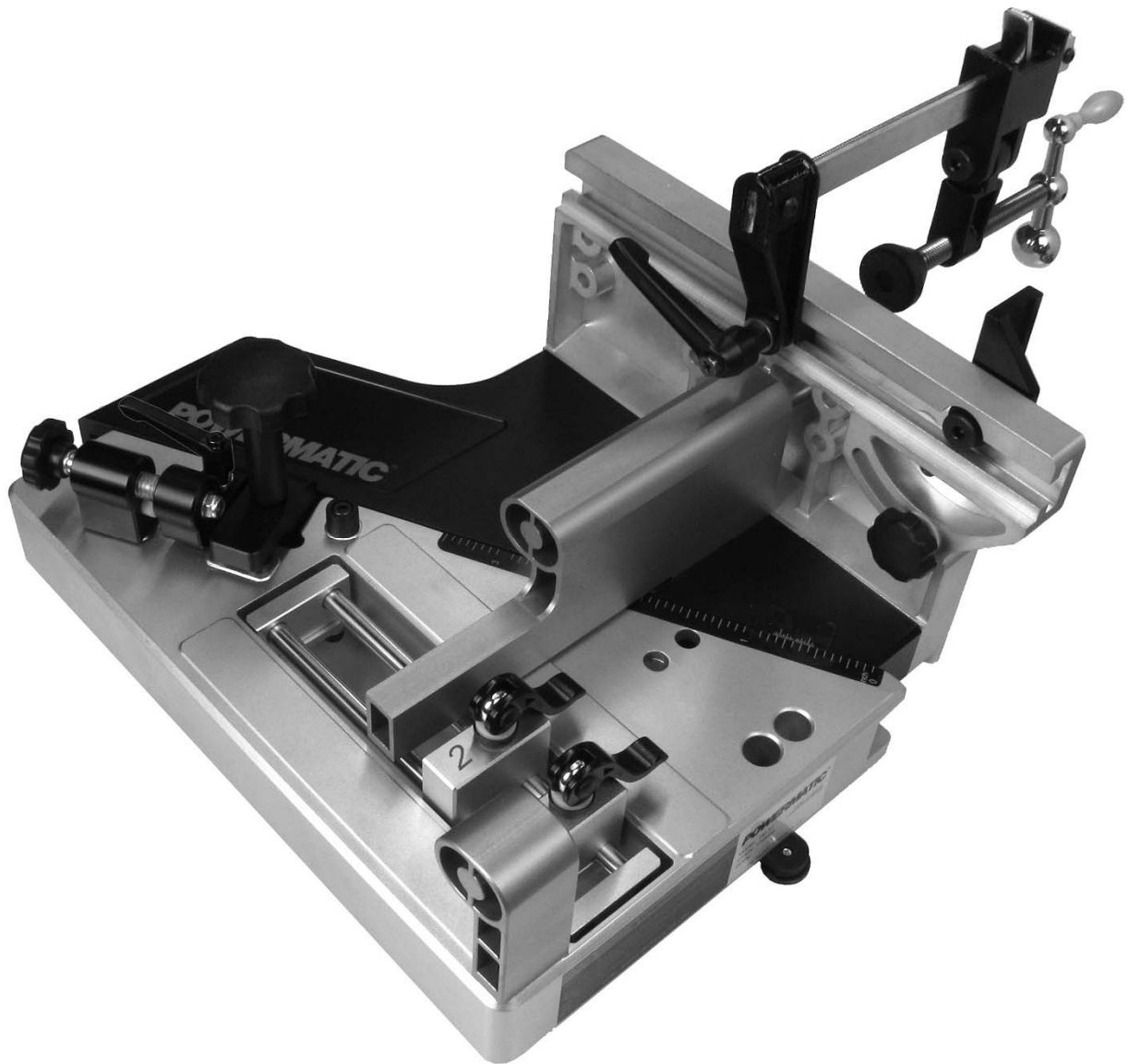


POWERMATIC®

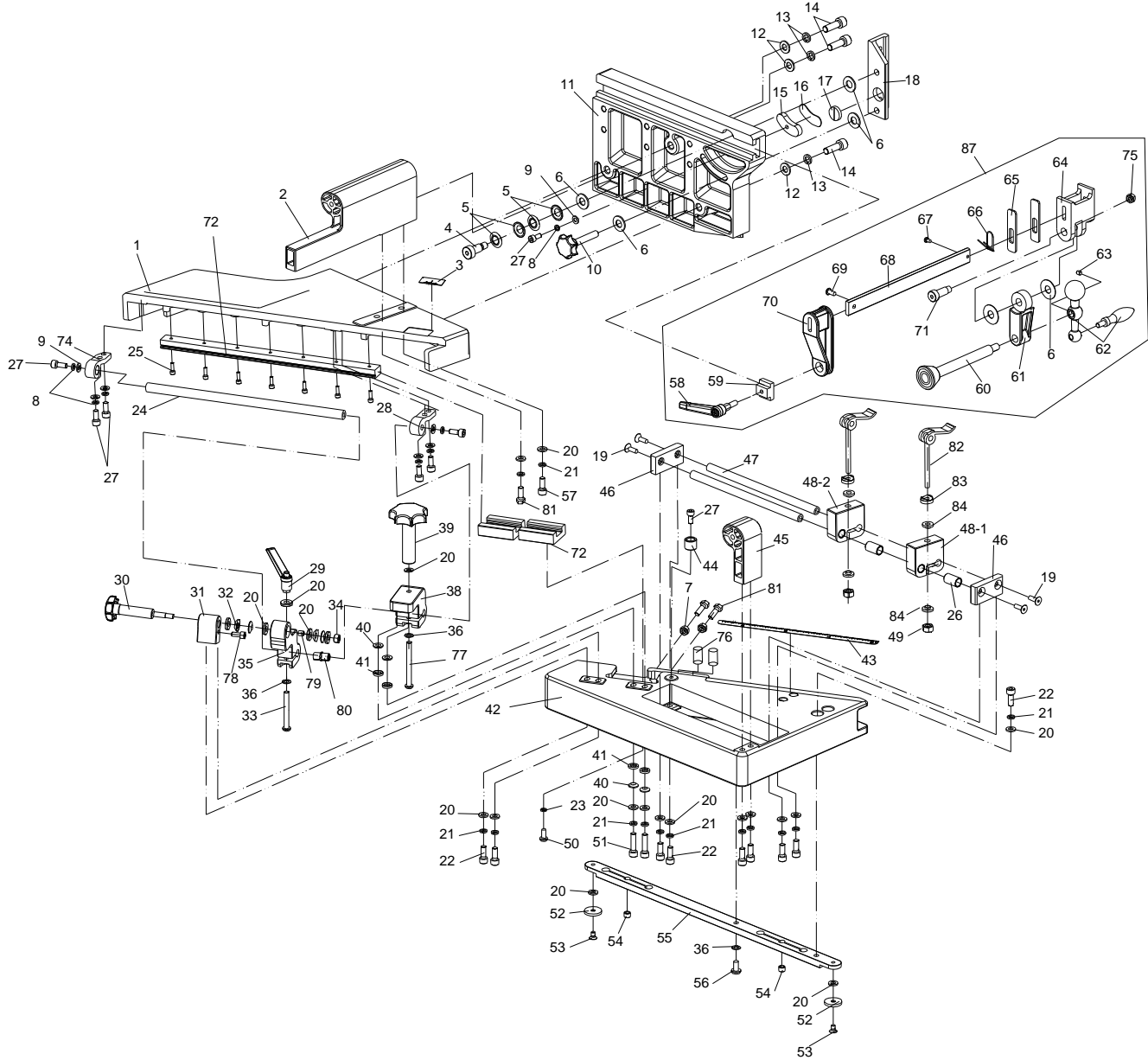
Operating Instructions and Parts Manual Tenoning Jig Model PM-TJ



Powermatic
427 New Sanford Road
LaVergne, Tennessee 37086
Ph.: 800-274-6848
www.powermatic.com

Part No. M-1799000
Edition 1 06/2015
Copyright © 2015 Powermatic

12.1.1 #1799000 Powermatic Tenoning Jig – Exploded View



Patent US 8,584,563

12.1.2 #1799000 Powermatic Tenoning Jig – Parts List

Index No	Part No	Description	Size	Qty
1	PMTJ-01	Sliding Fence Base		1
2	PMTJ-02	Fence Handle		1
3	PMTJ-03	Micro-Adjust Scale		1
4	PMTJ-04	Shoulder Screw	M10x16	1
5	PMTJ-05	Disc Spring	10 mm	4
6	PMTJ-06	Nylon Washer	10 mm	6
7	TS-1540041	Hex Nut	M6	2
8	TS-2361051	Spring Washer	M5	7
9	TS-1550031	Flat Washer	M5	7
10	PMTJ-10	Angle Lock Knob		1
11	PMTJ-11	Fence		1
12	TS-1550061	Flat Washer	M8	3
13	TS-2361081	Spring Washer	M8	3
14	TS-1504051	Socket Head Cap Screw	M8x25	3
	PMTJ-15-1	Angle Scale Base with Scale (includes #15,16)		1
15	PMTJ-15	Angle Scale Base		1
16	PMTJ-16	Angle Scale		1
	PMTJ-17-1	Work Stop with Indicator (includes #17,18)		1
17	PMTJ-17	Magnified Angle Indicator		1
18	PMTJ-18	Work Stop		1
19	TS-1513021	Flat Head Screw	M5x12	4
20	TS-1550041	Flat Washer	M6	18
21	TS-2361061	Spring Washer	M6	11
22	TS-1503041	Socket Head Cap Screw	M6x16	10
23	TS-1550011	Flat Washer	M3	8
24	PMTJ-24	Guide Rod		1
25	TS-1520041	Socket Head Cap Screw	M3x10	7
26	PMTJ-26	Insert	JSM-1012-20	2
27	TS-1502031	Socket Head Cap Screw	M5x12	8
28	PMTJ-28	Rear Micro-Adjust Stop		1
29	PMTJ-29	Locking Lever	M6x50	1
30	PMTJ-30	Micro-Adjust Knob		1
31	PMTJ-31	Micro-Adjust Block		1
32	PMTJ-32	Disc Spring	6 mm	4
33	PMTJ-33	Pan Head Screw	M6x50	1
34	TS-1541021	Nylon Lock Hex Nut	M6	1
35	PMTJ-35	Micro-Adjust Lock Block Assembly (includes #79)		1
36	708315-87	External Tooth Lock Washer	6 mm	3
38	PMTJ-38	Lock Block		1
39	PMTJ-39	Fence Lock Knob		1
40	PMTJ-40	Spherical Washer	6 mm	4
41	PMTJ-41	Inner Spherical Washer	6 mm	4
42	PMTJ-42	Jig Base		1
43	PMTJ-43	Main Scale		1
44	PMTJ-44	Limiter		1
45	PMTJ-45	Base Handle		1
46	PMTJ-46	Fixed Plate		2
47	PMTJ-47	Stop Block Rod		2
48-1	PMTJ-48-1	Stop Block #1		1
48-2	PMTJ-48-2	Stop Block #2		1
49	TS-1541021	Nylon Lock Hex Nut	M6	2
50	TS-1520041	Socket Head Cap Screw	M3x10	8
51	TS-1503061	Socket Head Cap Screw	M6x25	2
52	PMTJ-52	Guide Bar Washer		2
53	PMTJ-53	Countersunk Head Screw	M5x6	2
54	JJP12-103	Socket Set Screw	M8x6	2
55	PMTJ-55	Guide Bar		1
56	TS-2246122	Socket Head Button Screw	M6x12	1
57	TS-1503051	Socket Head Cap Screw	M6x20	2

Index No	Part No	Description	Size	Qty
58	PMTJ-58	Clamp Locking Lever	M8x25	1
59	PMTJ-59	T-Nut		1
60	PMTJ-60	Clamp Screw/Pad Assembly		1
61	PMTJ-61	Swing Arm		1
62	PMTJ-62	Handle Assembly		1
63	TS-1521021	Socket Set Screw	M4x6	1
64	PMTJ-64	Floating Clamp Jaw		1
65	PMTJ-65	Toggle Plate		2
66	PMTJ-66	Spring		1
67	TS-2171012	Pan Head Screw	M4x6	1
68	PMTJ-68	Clamp Bar		1
69	6290832	Pan Head Screw	M5x8	1
70	PMTJ-70	Fixed Clamp Jaw		1
71	PMTJ-71	Shoulder Screw		1
72	PMTJ-72	Linear Guide		2
74	PMTJ-74	Front Micro-Adjust Stop		1
75	TS-1541031	Nylon Lock Hex Nut	M8	1
76	PMTJ-76	Cylindrical Pin	6x14	2
77	PMTJ-77	Pan Head Screw	M6x60	1
78	PMTJ-78	Nylon Socket Head Screw	M6x6.5	1
79		Straight Sleeve Bearing (assembled with #35)	SF-1-0608	1
80	PMTJ-80	Insert	JUM-02-10	1
81	TS-1482041	Hex Cap Screw	M6x20	3
82	PMTJ-82	Locking Lever		2
83	PMTJ-83	Nylon Washer		2
84	PMTJ-84	Rubber Washer		4
85	LM000008	Powermatic Label (not shown)		1
86	LM000009	ID/Warning Label (not shown)		1
87	PMTJ-87	Complete Clamp Assembly (includes #6,58-71,75)		



427 New Sanford Road
LaVergne, Tennessee 37086
Phone: 800-274-6848
www.powermatic.com