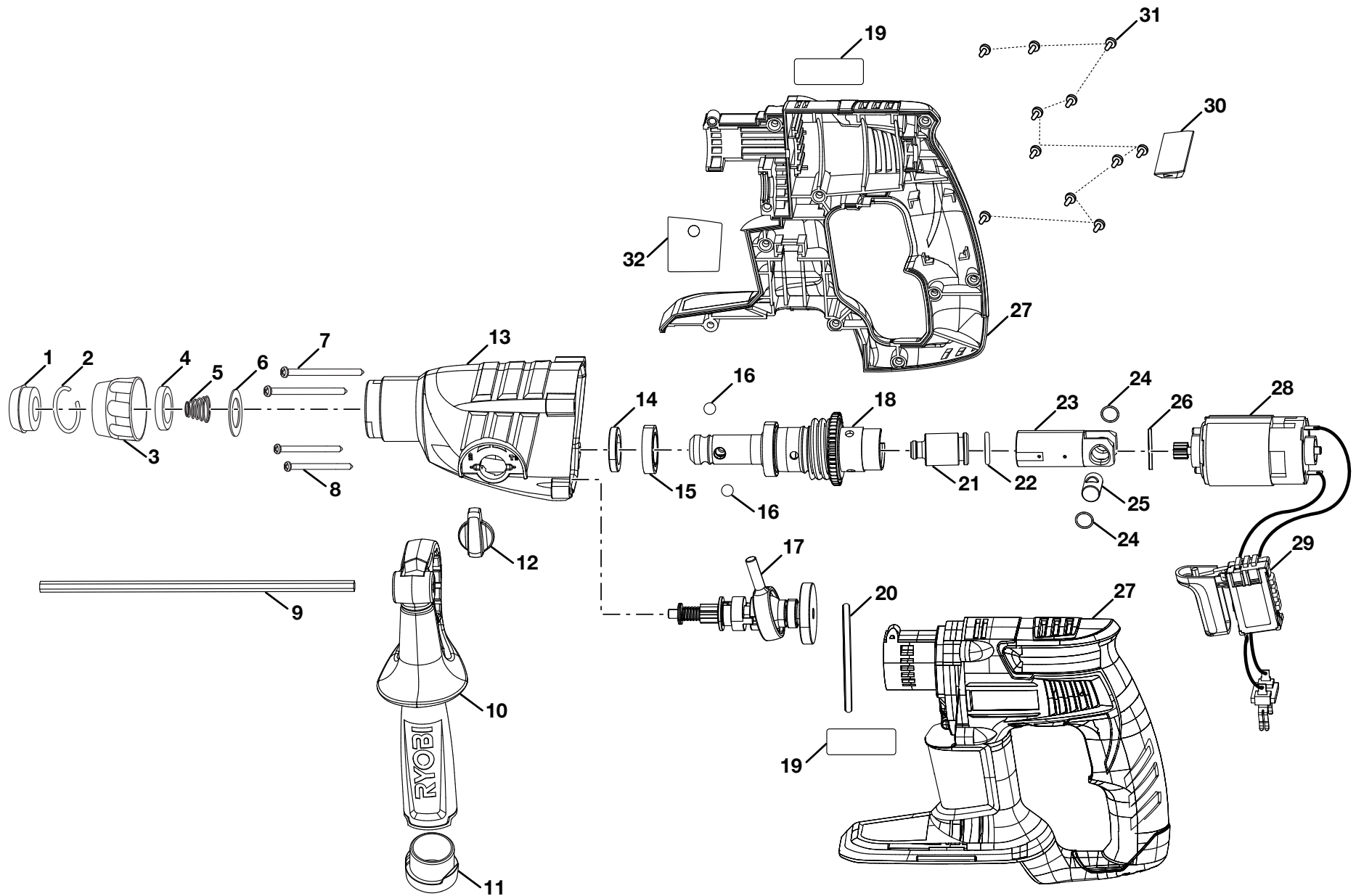


SDS ROTARY HAMMER DRILL - MODEL NUMBER P221



SDS ROTARY HAMMER DRILL – MODEL NUMBER P221

The model number will be found on a label attached to the motor housing. Always mention the model number in all correspondence regarding your **SDS ROTARY HAMMER DRILL** or when ordering parts.

PARTS LIST

KEY NO.	PART NUMBER	DESCRIPTION	QTY	KEY NO.	PART NUMBER	DESCRIPTION	QTY
1	019603001001	Front Cover	1	19	019603001067	Logo Label	2
2	019603001002	Ring (Ø17.5 x 2 mm)	1	20	019603001045	Rubber Seal Ring (Ø60 x 1.9 mm)	1
3	019603001003	Control Set	1	21	019603001023	Impact Piston	1
4	019603001004	Washer	1	22	019603001024	O-Ring (Ø20 x 2.8 mm)	1
5	019603001005	Spring	1	23	019603001025	Piston	1
6	019603001006	Washer (Ø31.8 x Ø20 x t1.0 mm)	1	24	019603001028	Washer (Ø18 x Ø12 x t1.2 mm)	2
7	019603001007	Screw (M4.2 x 30 mm)	2	25	019603001027	Pin	1
8	019603001081	Screw (M4.2 x 22 mm)	2	26	019603001026	Washer (Ø34 x Ø28 x t1.5 mm)	1
9	019603001065	Depth Stop Rod	1	27	019603001104	Housing Assembly	1
10	019603001106	Auxiliary Handle Assembly	1	28	019603001103	Motor Assembly	1
11	019603001064	Auxiliary Handle Cover	1	29	019603001108	Switch Assembly	1
12	019603001105	Button Assembly	1	30	019603001048	Rotation Plate	1
13	019603001100	Motor Housing Assembly	1	31	019603001050	Screw (M4.2 x 16 mm)	11
14	019603001009	Ball Bearing (61804-2Z)	1	32	019603007001	Data Label	1
15	019603001010	Rubber Seal	1				
16	019603001015	Steel Ball (Ø6.75 mm)	2				
17	019603001102	Input Shaft Assembly	1				
18	019603001101	Output Shaft Assembly	1				

Not Shown:

988000098 Operator's Manual (019603007005)

5-25-11
(REV:03)