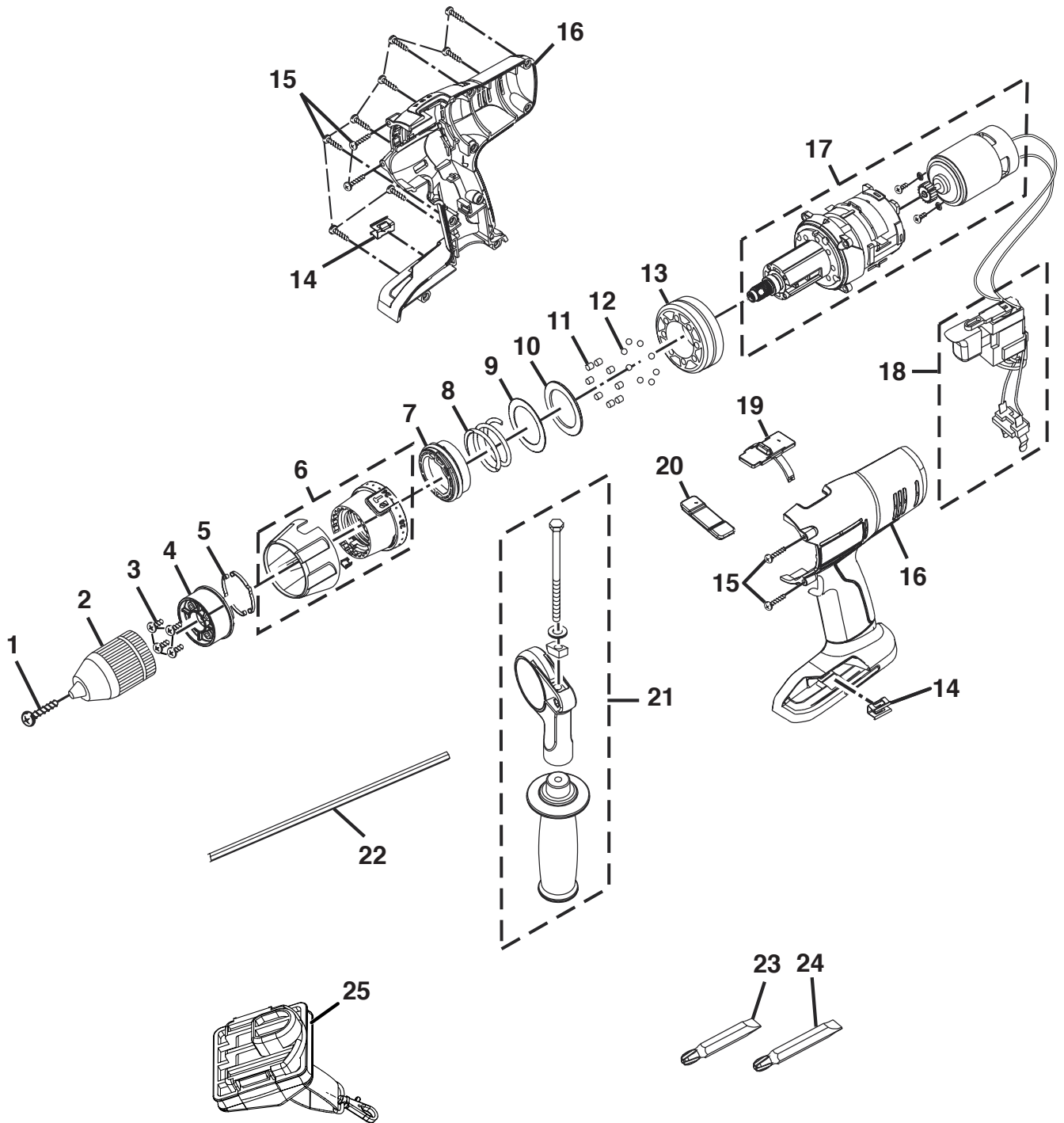


RYOBI 1/2 in. (13 mm) CORDLESS HAMMER DRILL – MODEL NUMBER P220



RYOBI 1/2 in. (13 mm) CORDLESS HAMMER DRILL – MODEL NUMBER P220

The model number will be found on a plate attached to the motor housing. Always mention the model number in all correspondence regarding your **Hammer Drill** or when ordering repair parts.

PARTS LIST

Key No.	Part Number	Description	Qty.
1	6613402	* SCREW (M6 X 1.0 X 27 mm NI-PLATE).....	1
2	690032016	CHUCK (1/2 in.)	1
3	660206031	* SCREW (M3.5 X 15 mm)	4
4	640845001	SPRING PLATE HOLDER	1
5	630207005	SPRING PLATE	2
6	300155033	CLUTCH CAP ASSEMBLY \ 010305 24 POSITION	1
7	540343004	PLASTIC SLEEVE	1
8	680095004	SPRING TORQUE CONTROL.....	1
9	630748004	CLUTCH CAP WASHER.....	1
10	680403003	CLUTCH WASHER.....	1
11	680338008	CLUTCH PIN SUJ 2 (DIA 5 X 23.7 mm)	8
12	6721901	STEEL BALL (5.0 mm).....	8
13	640760003	HANDLE MOUNTING CASTING	1
14	6320601	BIT CLIP.....	2
15	6620805	* SCREW (M4 X 16 mm)	12
16	200202279	HOUSING SET ASSEMBLY W / LABEL	1
17	985142001	MOTOR W/GEAR TRAIN ASSEMBLY.....	1
18	270016092	SWITCH ASSEMBLY	1
19	511232001	SPEED SELECTOR.....	1
20	540752002	FORWARD/REVERSE BUTTON.....	1
21	300188022	HANDLE ASSEMBLY.....	1
22	6341203	HEXAGON GUIDE ROD GAUGE W / GEAR	1
23	6782044	BIT (PH3 & S7 L50 mm)	1
24	6782045	BIT (PH2 & S6 L50 mm)	1
25	200292003	PLUG-IN LANYARD.....	1
	983000541	OPERATOR'S MANUAL (960223356)	
	983000541R	REPAIR SHEET (REV:01)	
	03-09-06		

* Standard Hardware Item – May Be Purchased Locally