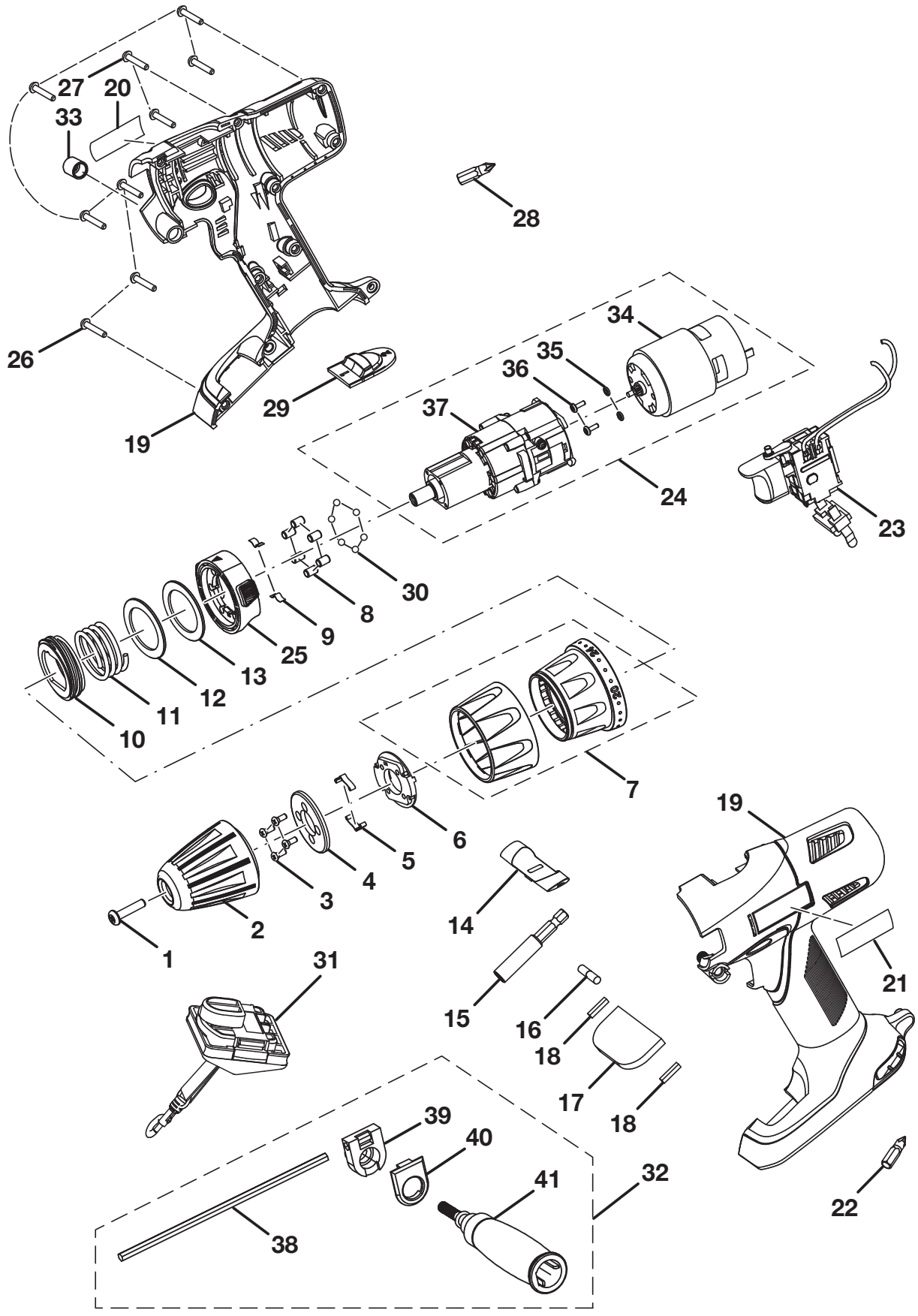


RYOBI 1/2 in. (13 mm) HAMMER DRILL- MODEL NUMBER P211



## RYOBI 1/2 in. (13 mm) HAMMER DRILL- MODEL NUMBER P211

The model number will be found on a label attached to the motor housing. Always mention the model number in all correspondence regarding your **Hammer Drill** or when ordering repair parts.

### PARTS LIST

KEY NO.	PART NUMBER	DESCRIPTION	QTY.
1	6613402	SCREW (SPECIAL).....	1
2	690032024	1/2 in. CHUCK.....	1
3	660204007	SCREW (M3 x 18 mm) .....	4
4	631494001	MOUNTING PLATE (OD42.8 x ID18.0 x 3.0 mm).....	1
5	6392201	SPRING PLATE .....	2
6	540346014	SPRING HOLDER .....	1
7	301319001	CLUTCH CAP ASSEMBLY .....	1
8	680338028	PIN.....	6
9	631817001	BYPASS SPRING PLATE (0.2 mm).....	2
10	550014009	SLEEVE .....	1
11	681015001	TORQUE CONTROL SPRING.....	1
12	672044001	BYPASS WASHER (0.1 mm) .....	1
	672044002	BYPASS WASHER (0.2 mm) .....	1
	672044003	BYPASS WASHER (0.3 mm) .....	1
	672141001	WASHER (OD53.5 x ID44.0 x 0.2 mm).....	1
13	672077001	CLUTCH WASHER.....	1
14	343547001	FOWARD/REVERSE SELECTOR .....	1
15	670283003	BIT HOLDER .....	1
16	5621901	CONTACT PLATE STOPPER.....	2
17	300823002	MAGNET .....	1
18	560444002	FOAM RUBBER .....	2
19	200105024	HOUSING ASSEMBLY .....	1
20	940057069	DATA LABEL.....	1
21	940054115	LOGO LABEL .....	1
22	670800032	SINGLE BIT (PH#2 25 mm) .....	1
23	270023174	SWITCH ASSEMBLY.....	1
24	200293044	MOTOR & GEAR TRAIN ASSEMBLY (INC. KEY NOS. 34-37)..	1
25	343637001	BYPASS RING.....	1
26	6620614	SCREW (M3.5 x 14 mm PAN HD.) .....	7
27	660004007	SCREW (M3 x 12 mm PAN HD.) .....	2
28	670804025	SINGLE BIT .....	1
29	343552004	2-SPEED CHANGE KNOB .....	1
30	6721901	BALL (Ø5.0 mm).....	6
31	200292003	PLUG IN LANYARD.....	1
32	200073014	HANDLE ASSEMBLY (INC. KEY NOS. 38-41) .....	1
33	681013001	HEX NUT (M12).....	1
34	230033071	MOTOR ASSEMBLY.....	1
35	6703001	SPRING WASHER (OD7.2 x ID4.1 x 1 mm) .....	2
36	6621205	SCREW (M4 x 8 mm PAN HD.) .....	2
37	220018020	GEAR BOX ASSEMBLY.....	1
38	6341203	HEXAGON GUIDE ROD .....	1
39	513665001	GUIDE ROD SUPPORT .....	1
40	641028001	PRESS PLATE .....	1
41	300067447	HANDLE ASSEMBLY .....	1
	983000749	OPERATOR'S MANUAL (960223672)	
	11-30-10		
	(REV:03)		