

RIDGID

OF45200SS

FIGURE A

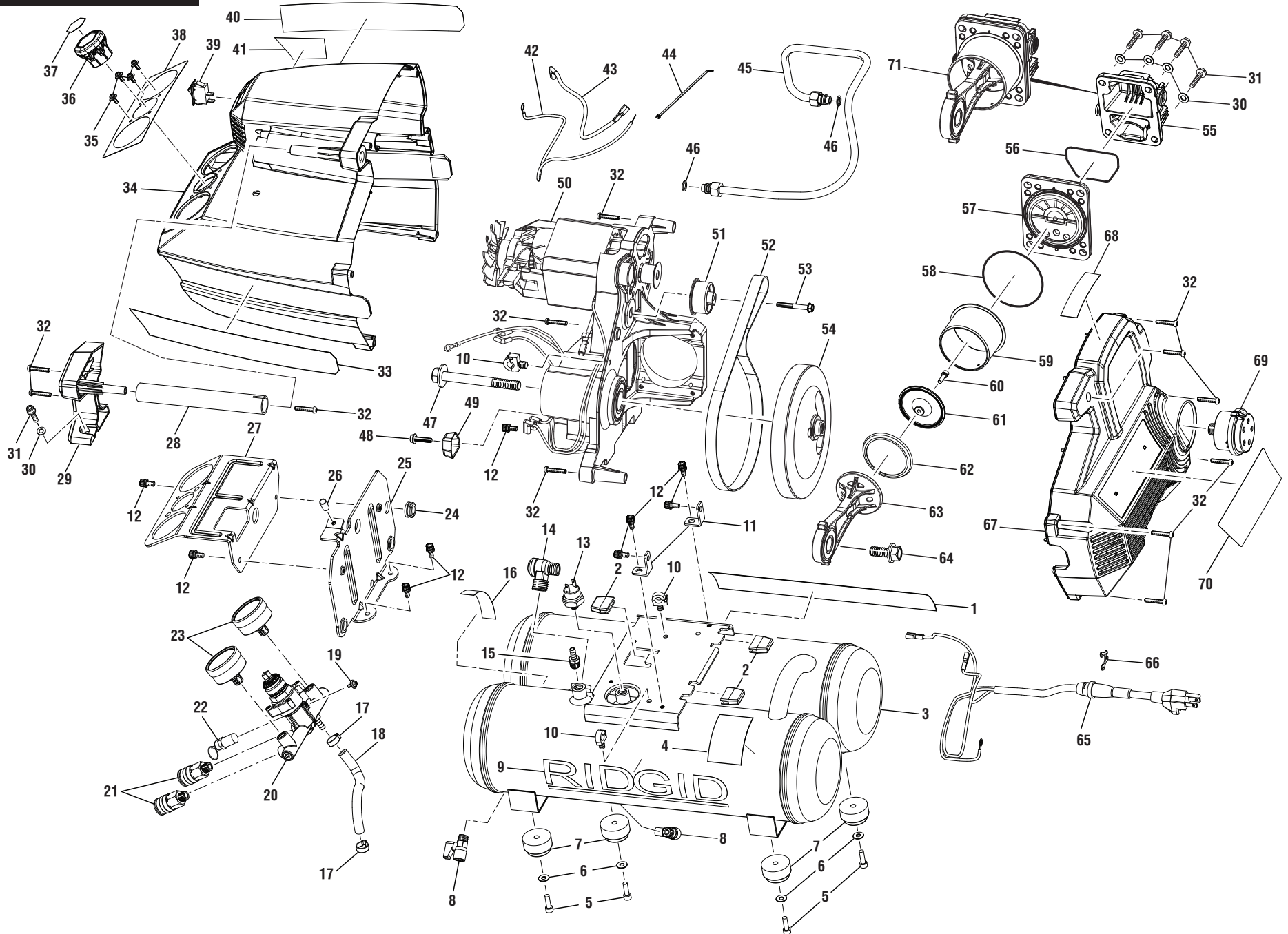
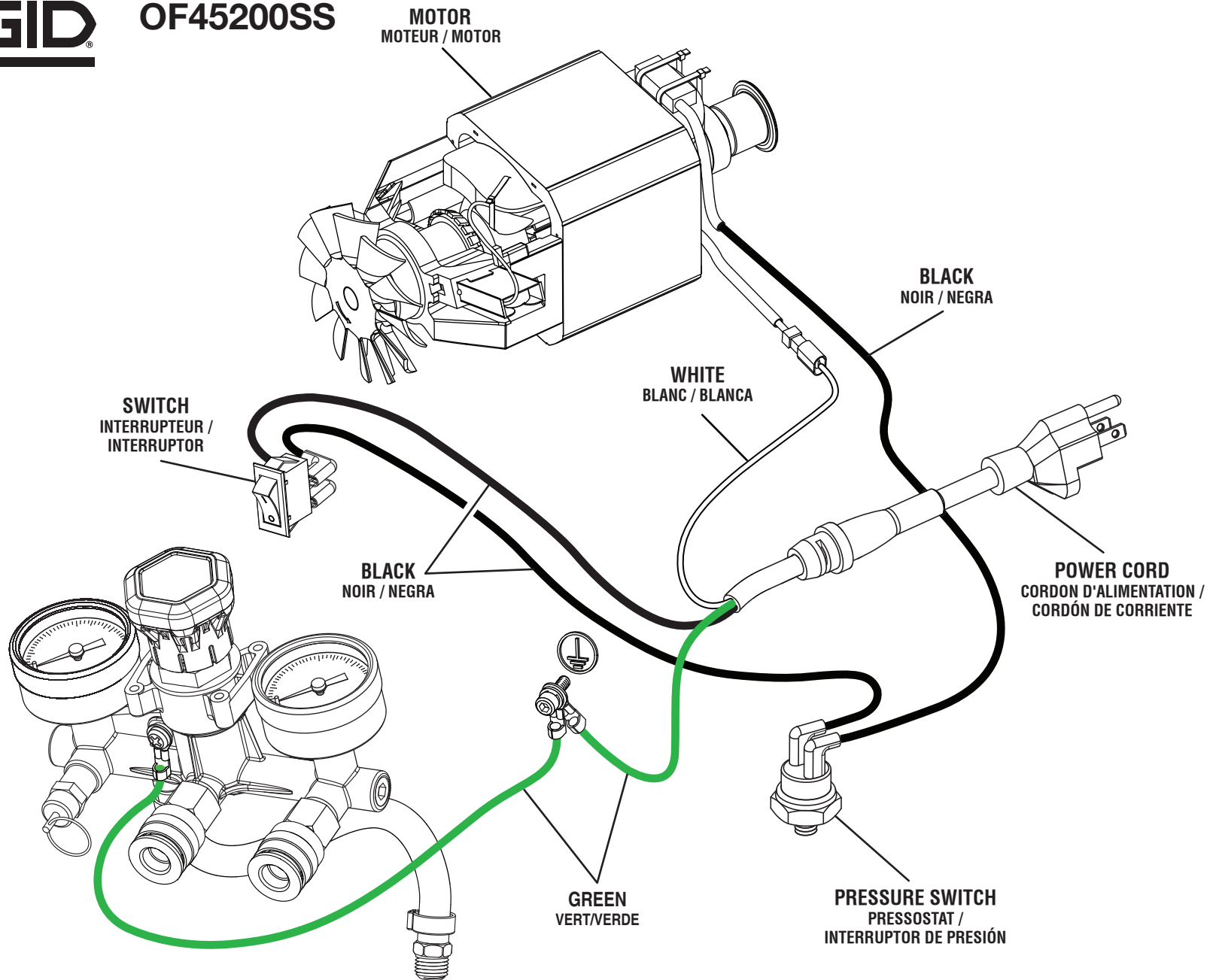


FIGURE A

KEY NO.	PART NUMBER	DESCRIPTION	QTY	KEY NO.	PART NUMBER	DESCRIPTION	QTY	KEY NO.	PART NUMBER	DESCRIPTION	QTY
1	941120180	Warning Label.....	1	27	637356001	Manifold Panel.....	1	51	206496001	Cam Assembly	1
2	563929001	Rubber Pad	3	28	695292001	Handle	1	52	563814002	Flat Belt (MXL 378T, Carlisle).....	1
3	206510001	Tank Assembly (Incl. Key Nos. 1, 4, 9 and 16).....	1	29	531132001	Handle Mount (Front).....	1	53	673453001	Screw (M6 x 48 mm).....	1
4	941120182	Data Label	1	30	692043001	Washer (ID6.5 x OD13 x 1t)	5	54	673415001	Flywheel.....	1
5	661270003	Screw (M6 x 20 mm).....	4	31	660058006	Screw (M6 x 35 mm).....	5	55	642568001	Cylinder Cover.....	1
6	634407001	Washer (ID6.1 x OD15 x 1t)	4	32	661075001	Screw (M5 x 28 mm).....	12	56	563920001	Seal Ring	1
7	564031001	Foot	4	33	941120184	Performance Label (Right).....	1	57	206509001	Valve Plate Assembly	1
8	306735004	Drain Valve Assembly	2	34	206511001	Front Housing Assembly (Incl. Key Nos. 33, 38 and 40-41)	1	58	563919001	O-Ring	1
9	941114180	Logo Label.....	1	35	660798009	Screw w/Washer (M4 x 18 mm).....	4	59	636688001	Cylinder	1
10	531380001	Wire Clip	3	36	206512001	Manifold Knob Assembly (Incl. Key No. 37)	1	60	662027001	Screw (M5 x 18 mm).....	1
11	637215001	Lock Plate.....	2	37	941120097	Regulator Knob Label.....	1	61	642567001	Rod Plate	1
12	660169060	Screw (M6 x 14 mm).....	9	38	941120181	Control Panel Label	1	62	563815001	Piston Ring	1
13	290013102	Pressure Switch.....	1	39	760271020	On/Off Switch	1	63	206494001	Rod Plate Assembly	1
14	306736006	Check Valve.....	1	40	941120176	Performance Label (Left)	1	64	673455001	Screw (1/2 in. x 30 mm).....	1
15	695368002	Hose Connector	1	41	941120179	On/Off Label	1	65	730372043	Power Cord.....	1
16	941120197	Drain Valve Label	1	42	290061322	Ground Wire	1	66	637359001	Retaining Ring	1
17	635294004	Hose Clamp.....	2	43	290061321	Bonding Wire	1	67	206508001	Rear Motor Housing Assembly (Incl. Key Nos. 68 and 70).....	1
18	563426004	Air Hose.....	1	44	790002001	Cable Tie.....	1	68	941488192	Hot Surface/Data Label.....	1
19	660798004	Screw w/Washer (M4 x 12 mm).....	1	45	311835001	Outlet Tube Assembly.....	1	69	311836001	Air Filter Assembly.....	1
20	306737010	Manifold Assembly	1	46	563501003	Seal Ring	2	70	941120183	Warning Label (Spanish).....	1
21	306739001	Quick Coupler.....	2	47	673454001	Screw (1/2 in. x 114 mm).....	1	71	206515001	Piston Rod, Cylinder, Valve Plate and Cover Assembly (Inc. Key Nos. 55-63).....	1
22	311360001	Safety Valve	1	48	660058007	Screw (M6 x 18 mm).....	1	NOT SHOWN:			
23	306741001	Pressure Gauge (300 psi)	2	49	637214001	Fixed Plate (Bracket)	1	991000921	Operator's Manual		
24	564075001	Rubber Sleeve	1	50	206495001	Motor and Motor Bracket Assembly	1	6-10-16			
25	637194001	Tank Panel	1					(Rev:01)			
26	695420001	Bushing.....	1								

RIDGID

OF45200SS



WIRING DIAGRAM
SCHÉMA DE CÂBLAGE
DIAGRAMA DE CABLEADO