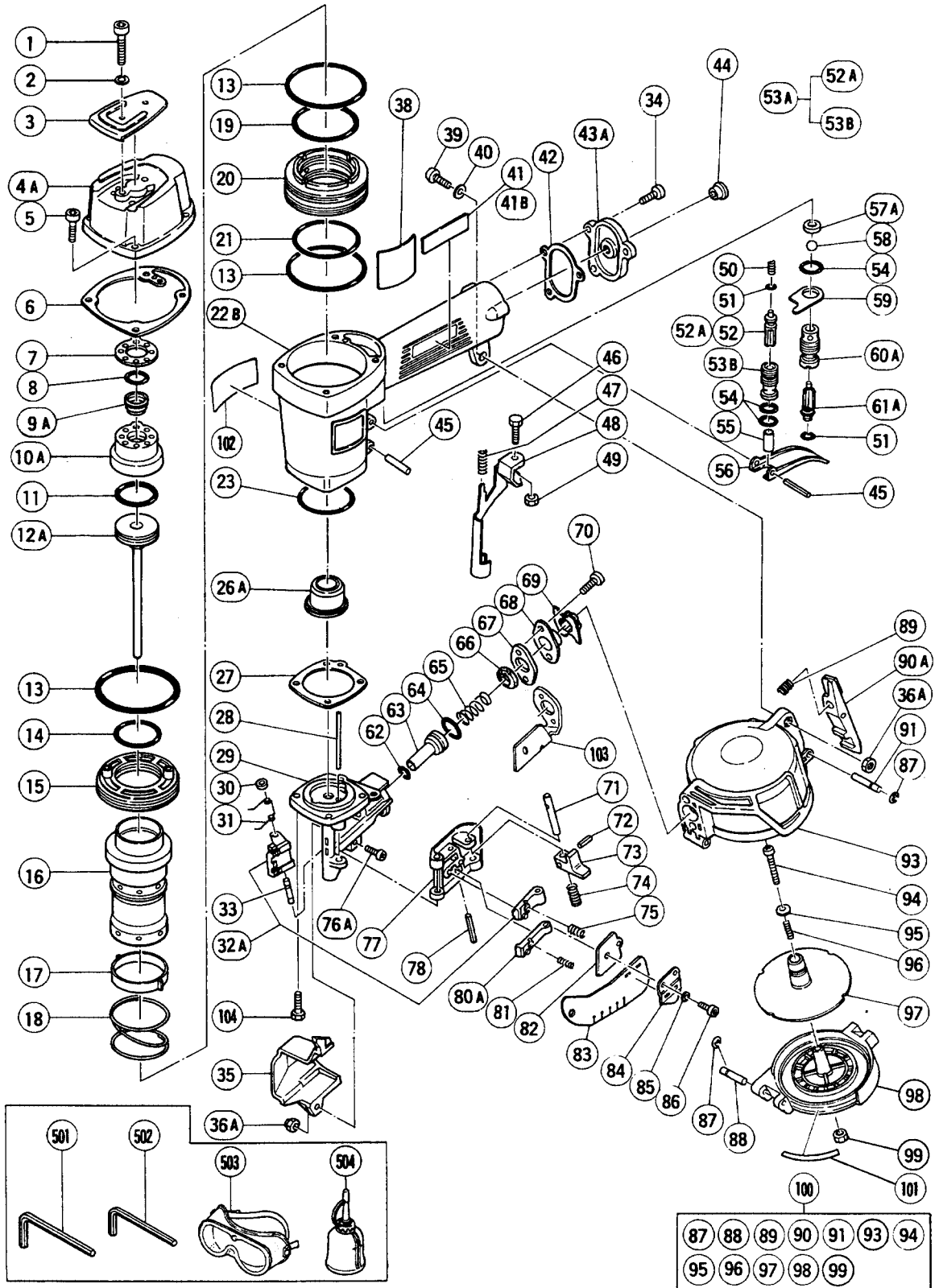


## PNEUMATIC TOOL PARTS LIST

■ COIL NAILER  
Model NV 50A1

1995 · 10 · 10  
(E6)



## PARTS

NV 50A1

ITEM NO.	CODE NO.	DESCRIPTION	NO. USED	REMARKS
1	949-862	HEX. SOCKET HD. BOLT M5X25 (10 PCS.)	2	
2	949-454	SPRING WASHER M5 (10 PCS.)	12	
3	878-179	TOP COVER	1	
4A	880-275	EXHAUST COVER (B)	1	
5	949-757	HEX. SOCKET HD. BOLT M5X20 (10 PCS.)	4	
6	878-712P	GASKET (F)	1	
7	878-713P	GASKET (G)	1	
8	872-821	VALVE O - RING	2	TILL 12.1987
9A	878-417	EXHAUST VALVE	1	
10A	878-711P	HEAD CAP	1	
11	878-174	PISTON O - RING	2	
12A	877-898	PISTON (H)	1	
13	878-181	O - RING (S - 85)	3	
14	877-128	CYLINDER O - RING (D)	1	
15	878-188	CYLINDER PLATE	1	
16	877-486	CYLINDER	1	
17	878-187	CYLINDER RING	1	
18	878-172	CYLINDER SPRING	1	
19	877-123	CYLINDER O - RING (A)	1	
20	877-122	CYLINDER GUIDE	1	
21	877-124	CYLINDER O - RING (B)	1	
22B	878-708P	BODY (B)	1	
23	877-125	CYLINDER O - RING (C)	1	
26A	878-179	PISTON BUMPER	1	
27	878-873	GASKET (A)	1	
28	877-823	NAIL GUIDE SHAFT	1	
29	877-899	NOSE	1	
30	877-828	FEEDER SHAFT RING	1	
31	877-474	FEEDER SPRING	1	
32A	880-270	FEEDER SET	1	
33	877-804	FEEDER SHAFT	1	
34	949-821	HEX. SOCKET HD. BOLT M5X18 (10 PCS.)	3	
35	877-480	GUARD	1	
36A	877-371	NYLON NUT M5	2	
38		NAME PLATE	1	
39	949-241	MACHINE SCREW M5X20 (10 PCS.)	1	
40	878-205	WASHER	1	
41	950-585	HITACHI LABEL	1	TILL 7.1988
41B	878-859	HITACHI LABEL	1	SINCE 8.1988
42	877-131	GASKET (D)	1	
43A	880-036	CAP	1	
44	872-035	DUST CAP	1	
45	949-888	ROLL PIN D3X30 (10 PCS.)	2	
46	875-850	SAFETY BOLT	1	
47	878-876	SAFETY SPRING	1	
47	877-843	SPRING	1	FOR EUROPE
48	877-890	PUSHING LEVER	1	
49	949-555	NUT M5 (10 PCS.)	1	
50	875-843	PLUNGER SPRING	1	
51	874-820	PLUNGER O - RING	2	
52	878-739	SAFETY PLUNGER (A)	1	TILL 7.1988

\*: ALTERNATIVE PARTS

**PARTS**

NV 50A1

ITEM NO.	CODE NO.	DESCRIPTION	NO. USED	REMARKS
52A	878-122	PLUNGER (A)	1	SINCE 8.1986
53A	876-764	VALVE BUSHING ASS'Y	1	INCLUD.52A,53B TILL 7.1986
53B	878-266	VALVE BUSHING	1	SINCE 8.1986
54	875-838	O - RING (S - 12)	3	
55	875-642	SAFETY PLUNGER (B)	1	
56	876-203	TRIGGER	1	
57A	878-734	VALVE PACKING	1	
58	875-645	URETHANE BALL (C) D7.14	1	
59	875-644	VALVE PLATE	1	
60A	877-335	TRIGGER VALVE BUSHING	1	
61A	878-121	TRIGGER PLUNGER	1	
62	872-645	O - RING (P - 9)	1	
63	877-475	FEED PISTON	1	
64	873-570	O - RING (P - 18)	1	
65	876-693	FEED SPRING	1	
66	877-476	BUMPER	1	
67	877-477	FEED PISTON COVER (A)	1	FOR USA
68	877-478	FEED PISTON COVER (B)	1	
69	877-479	MAGAZINE BUSHING	1	
70	949-819	HEX. SOCKET HD. BOLT M5X10 (10 PCS.)	2	
71	876-682	LOCK SHAFT	1	
72	949-776	ROLL PIN D3X10 (10 PCS.)	1	
73	877-374	GUIDE LOCK	1	
74	877-372	SPRING	1	
75	876-681	MAIN STOPPER SPRING	1	
76A	949-239	MACHINE SCREW M5X16 (10 PCS.)	1	
77	877-485	NAIL GUIDE	1	
78	949-865	ROLL PIN D3X28 (10 PCS.)	1	
80A	877-493	SUB NAIL STOPPER	1	
81	877-488	SUB STOPPER SPRING	1	
82	877-489	NAIL GUIDE COVER	1	
83	877-470	COVER	1	
84	877-471	COVER PLATE	1	
85	949-453	SPRING WASHER M4 (10 PCS.)	2	
86	949-811	HEX. SOCKET HD. BOLT M4X8 (10 PCS.)	2	
87	872-971	RETAINING RING (E - TYPE) FOR D3 SHAFT	2	
88	877-152	HINGE PIN	1	
89	877-149	STOPPER SPRING	1	
90A	880-146	MAGAZINE STOPPER	1	
91	877-150	STOPPER PIN	1	
93	877-906	MAGAZINE	1	
94	949-228	MACHINE SCREW M4X40 (10 PCS.)	1	
95	875-246	WASHER	1	
96	877-894	HOLDER SPRING	1	
97	877-893	NAIL HOLDER	1	
98	877-895	MAGAZINE COVER	1	
99	876-465	NYLON NUT M4	1	
100	877-902	MAGAZINE ASS'Y	1	INCLUD.87 - 91,93 - 99,101
100	877-882	MAGAZINE ASS'Y	1	INCLUD.87 - 91,93 - 99 FOR EUROPE
101	877-903	LABEL	1	EXCEPT FOR EUROPE

\*: ALTERNATIVE PARTS

**PARTS**

NV 50A1

ITEM NO.	CODE NO.	DESCRIPTION	NO. USED	REMARKS
102		CAUTION PLATE	1	FOR EUROPE
103	877-916	NAIL GUARD	1	FOR EUROPE
104	878-181	NYLOCK HEX. SOCKET HD. BOLT M5X18	4	

**STANDARD ACCESSORIES**

ITEM NO.	CODE NO.	DESCRIPTION	NO. USED	REMARKS
501	844-458	HEX. BAR WRENCH 4MM	1	
502	843-277	HEX. BAR WRENCH 3MM	1	
503	875-789	EYE PROTECTOR	1	
504	877-153	PNEUMATIC TOOL LUBRICANT (30CC)	1	FOR EUROPE

**OPTIONAL ACCESSORIES**

ITEM NO.	CODE NO.	DESCRIPTION	NO. USED	REMARKS
601	876-212	PNEUMATIC TOOL LUBRICANT (1L)	1	
602	876-720	DRIVE CONTROLLER	1	
606A	877-908	POWER SET	1	INCLUD.607 - 612,614
607	949-827	HEX. SOCKET HD. BOLT M5X85 (10 PCS.)	2	
608	949-826	HEX. SOCKET HD. BOLT M5X80 (10 PCS.)	4	
609	877-909	UPPER COVER	1	
610	877-911	GASKET (H)	1	
611	877-912	GASKET (J) W/4MM HOLE	2	FOR ROLL TYPE NAILER
612	877-910	EXHAUST PIECE	1	
613	876-762	SINGLE SHOT PARTS	1	
614	877-915	GASKET (J) W/O 4MM HOLE	2	FOR NON - ROLL TYPE NAILER

\* : ALTERNATIVE PARTS