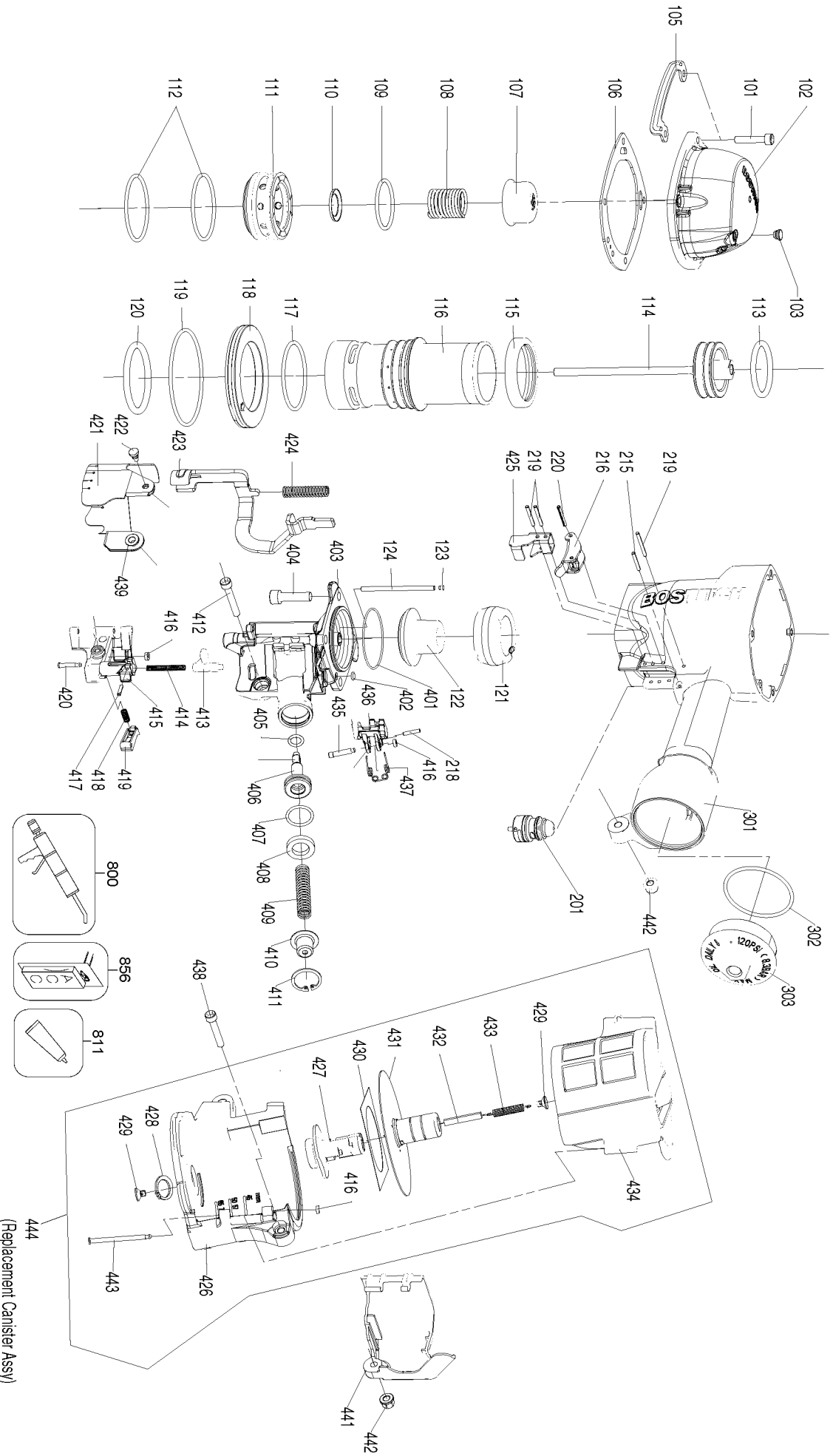


N71C

COIL-FED PNEUMATIC NAILER
CLAVADORA NEUMÁTICA ALIMENTADA POR ROLLO
CLIQUEUR PNEUMATIQUE À ENROULEMENT



Parts List for N71C Type 0

Item Number	Part Number	Description	Qty Required
101	MSC6100-30	SCREW-SHCS-M6X1.00X3	4
102	7USSB-3086001	CAP-SERVICE N71C	1
103	1135S-0350001	GROMMET	1
105	102473	PROTECTOR-TOP FRAME	2
106	N70118	SEAL-CYLINDER CAP	1
107	11370-0860001	STOP-PISTON	1
108	101256	SPRING-COMPRESSION	1
109	MRG041630	O-RING-1.638X.118	1
110	N80337	HEAD VALVE PISTON	1
111	N80337	HEAD VALVE PISTON	1
112	851438	O-RING-2.236X.115	1
113	851439	O-RING-1.689X.190	1
114	102630	ASSEMBLY-DRIVER/PIST	1
115	N70155	SEAL-CYLINDER	1
116	11320-0860001	SLEEVE-CYLINDER	1
117	101236	O-RING-2.48X.115	1
118	11321-0860001	RING-CYLINDER	1
119	MRG084431	O-RING-3.323X.122	1
120	2041100-06010	O-RING	1
121	N70156	BUMPER - A	1
122	N70157	BUMPER - B	1
123	1135S-0860001	PLUG-NOSE	1
124	N70164	PIN-SPECIAL	1
201	TVA6	KIT-TRIGGER VALVE	1
215	MPP030020	PIN-SPIRAL M3X20MM	1
216	CNTK2	KIT-CONTACT TRIP CON	1
217	SEQ6	KIT-SEQUENTIAL	1

Parts List for N71C Type 0

Item Number	Part Number	Description	Qty Required
218	MPP030016	PIN-SPIRAL-M3X16	1
219	100298	PIN-SPIRAL M3X30	3
220	100298	PIN-SPIRAL M3X30	1
301	11230-0868001	FRAME	1
302	MRG049431	O-RING-2.343X.118	1
303	N70167	CAP-END	1
401	2041108-06060	O-RING	1
402	2041108-01010	O-RING	1
403	11382-0864701	NOSE	1
404	MSC8125-28	SCREW-SHCS M8X28	4
405	MRG009824	O-RING-.386X.094	1
406	N70166	FEED PISTON	1
407	851437	O-RING-.819X.095	1
408	N70162	STOP-FEED PISTON	1
409	854039	SPRING-COMPRESSION	1
410	N70163	SPRING COLLAR	1
411	MRB026	RETAINING RING- METR	1
412	MSC6100-40	SCREW-SOC. HD. CAP M	1
413	N70150	LATCH DOOR	1
414	101408	SPRING-COMPRESSION	1
415	N70122	DOOR	1
416	854004	WASHER-RUBBER-7	3
417	MPP030012	PIN-SPIROL	1
418	854011	COMPRESSION SPRING	1
419	N70149	PAWL CHECK	1
420	N70140	PIN-SPECIAL(STEP)	1
421	11383-0860001	SHIELD-DUST	1

Parts List for N71C Type 0

Item Number	Part Number	Description	Qty Required
422	1134B-0864701	PLUG-DUST SHIELD	1
423	11330-0864701	ARM-CONTACT	1
424	102080	SPRING-COMPRESSION	1
425	N70145	GUIDE-ARM	1
429	1134M-0864701	BASE-SPRING	2
430	1138X-0860001	RUBBER PLATE	1
431	11356-0864701	SPACER	1
432	1138W-0860001	SPACER	1
433	11328-0860001	SPRING-PULL	1
434	11355-0864701	COVER-CANISTER	1
435	N50087	PIN-SPECIAL(STEP)	1
436	167087	PAWL-FEED	1
437	854023	SPRING-TORSION	1
438	MSC6100-35	SCREW-SHCS-M6X1.00X3	1
440	MPW6.2	WASHER.SPECIAL	1
441	N70160	GUARD	1
442	2040501-04010	NUT-CAP	2
443	1136R-0864701	MAGAZINE SHAFT PIN	1
444	7USSB-2086002	ASSY-CANISTER-N71C	1
800	100653	LUBE (2CC)	1
800	100679	LUBE (1LB.CAN)	1
811	851385	LOCTITE	1