

Model MK-470
Tile Saw
Owner's Manual
Parts List &
Operating
Instructions



Warning:

- For your own safety read instruction manual before operating saw.
- Wear eye protection.
- Use splash hood for every operation for which it can be used.
- Disconnect saw before servicing, when changing cutting wheels, and cleaning.
- Use tool only with smooth edge cutting wheels free of openings and grooves.
- Replace damaged cutting wheel before operating.

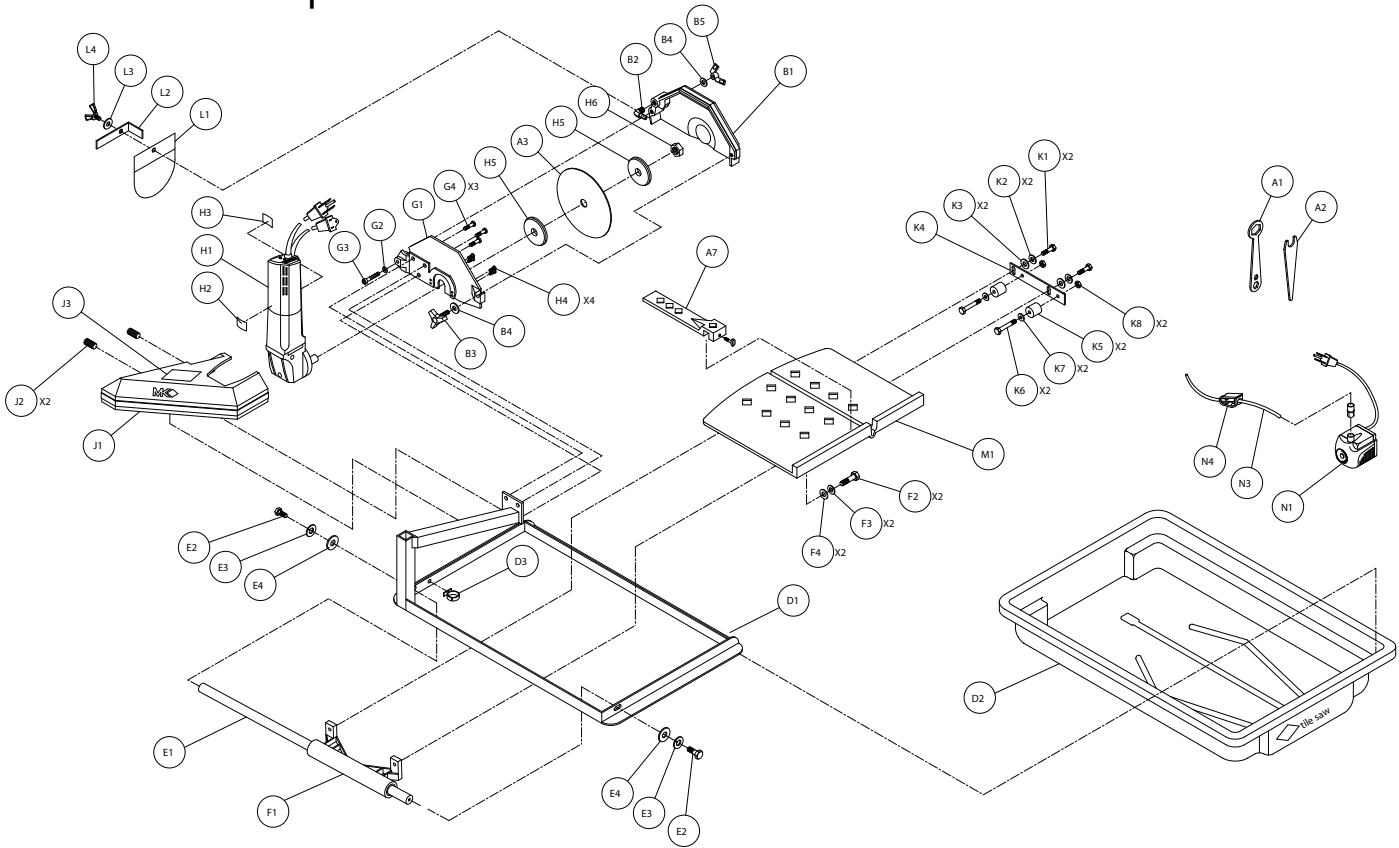
please record the serial number (Located on the cover post casting) of your saw in this block.

serial number

For your warranty to be effective, complete the warranty card (include the serial number) and mail it in as soon as possible.

MK-470 TILE SAW

MK-470 Exploded View



MK-470 Parts List

| |
|--|
| Model |
| MK-470 Tile Saw 120v/7.4a, Part # 155779 |

| Item | Description | Qty | Part # |
|------|--|--------|---------------------|
| A1 | Wrench, Blade Nut, 15/16 Boxed End | 1 | 134684 |
| A2 | Wrench, Blade Shaft, 11/16 Open End | 1 | 153450 |
| A3 | Blade, 7 Dia X 5/8 Arbor | 1 | 153441 |
| A4* | Owner's Manual | 1 | 156934 |
| A5* | Warranty Card | 1 | 155037 |
| A6* | Information Tag | 1 | 155844 |
| A7 | Assembly, Rip Guide w/ Screw, _-20 X _ Thumb | 1 1 | 134551-MK 150991 |
| B | Assembly, Blade Guard, 7" | 1 | n/a |
| B1 | Guard, Blade, 7" | 1 | 154811-MK |
| B2 | Elbow, 1/8 MNPT X _ BARB 90° Brass | 1 | 154652 |
| B3 | Knob, Davies | 1 | 151681 |
| B4 | Washer, 5/16 SAE Flat | 2 | 151754 |
| B5 | Wingnut, 5/16-18 Nylock | 1 | 151746 |
| D1 | Frame | 1 | 155792 |
| D2 | Pan, Water | 1 | 155791 |
| D3 | Cord Clip, _ Push Mount | 1 | 157259 |
| E | Assembly, Guide Bar, 5/8 Dia | 1 | 151739-MK |
| E1 | Bar, Guide, 5/8 Dia | 1 | 151739 |
| E2 | Screw, 5/16-18 X 1 Hex Head Cap | 2 | 151743 |
| E3 | Washer, 5/16 Split Lock | 2 | 151747 |
| E4 | Washer, 5/16 SAE Flat | 2 | 151754 |
| F1 | Bearing, Linear, 5/8 Dia | 1 | 157126 |
| F1A | Bearing, Multilube | 2 | 151781 |
| F2 | Screw, 5/16-18 X 1 Hex Head Cap | 2 | 151743 |
| F3 | Washer, 5/16 Split Lock | 2 | 151747 |
| F4 | Washer, 5/16 SAE Flat | 2 | 151754 |
| G | Assembly, Motor Mount | 1 | 155811-MK |
| G1 | Motor Mount | 1 | 157403 |
| G2 | Washer, 5/16 Split Lock | 1 | 151747 |
| G3 | Screw, 5/16-18 X 2 1/2 Hex Head Cap, Full Thread | 1 | 151748 |
| G4 | Screw, 1/4-20 X 1/2 Flat Head Phillips Cap | 3 | 155812 |
| H1 | Motor, 120v/5.3a | 1 | 156428-S |
| H2 | Label, Caution, GFCI, 1 X 2 1/8 | 1 | 155678 |
| H3 | Label, Caution, Receptacle, 1 X 2 1/8 | 1 | 154822 |
| H4 | Screw, 10-32 X 5/8 Flat Head Phillips Cap | 4 | 157554 |
| H5 | Flange, Blade | 2 | 135830 |
| H6 | Nut, 5/8-18 UNF | 1 | 135848 |
| H7 | Label, 470 Model | 1 | 156690 |
| J1 | Cover, Post | 1 | 155802 |
| J2 | Screw, 1/4-20 X 5/16 Socket Head Set | 2 | 154226 |
| J3 | Label, Warning, Read Owner's Manual | 1 | 155806 |
| K | Assembly, Roller Wheel Double | 1 | 156586 |
| K1 | Screw, 5/16-18 X 1 Hex Head Cap | 2 | 151743 |
| K2 | Washer, 5/16 Split Lock | 2 | 151747 |
| K3 | Washer, 5/16 SAE Flat | 2 | 151754 |
| K4 | Bracket, Roller Wheel | 1 | 156522 |

| | | | |
|-----|------------------------------------|----|-----------|
| K5 | Wheel, Roller | 2 | 151799 |
| K6 | Screw, 1/4-20 X 1 1/4 Hex Head Cap | 2 | 157145 |
| K7 | Washer, 1/4 SAE Flat | 2 | 151915 |
| K8 | Nut, 1/4-20 Hex | 2 | 151893 |
| L | Assembly, Splash Curtain | 1 | 155901-MK |
| L1 | Curtain, Splash | 1 | 134841 |
| L2 | Bracket, Splash Curtain | 1 | 155901 |
| L3 | Washer, 1/4 SAE Flat | 1 | 151915 |
| L4 | Wingscrew, 1/4-20 X 1/2 | 1 | 151888 |
| M | Table, 470 | 1 | 156536 |
| N | Assembly, PES-100 120v Water Pump | 1 | 155987-MK |
| N1 | Pump, Water, PES-100 120v | 1 | 155987 |
| N3 | Hose, Vinyl, 1/4 ID | 2' | 132951 |
| N4 | Clamp, Flow, 1/4-1/2 | 1 | 154394 |
| N5* | Owner's Manual, Water Pump | 1 | 155745 |

*Not shown in exploded view

Rev 12/00